

Perry Annual Assessment Meeting

Reactor Oversight Program - CY 2003



Nuclear Regulatory Commission - Region III
Lisle, Illinois
April 20, 2004

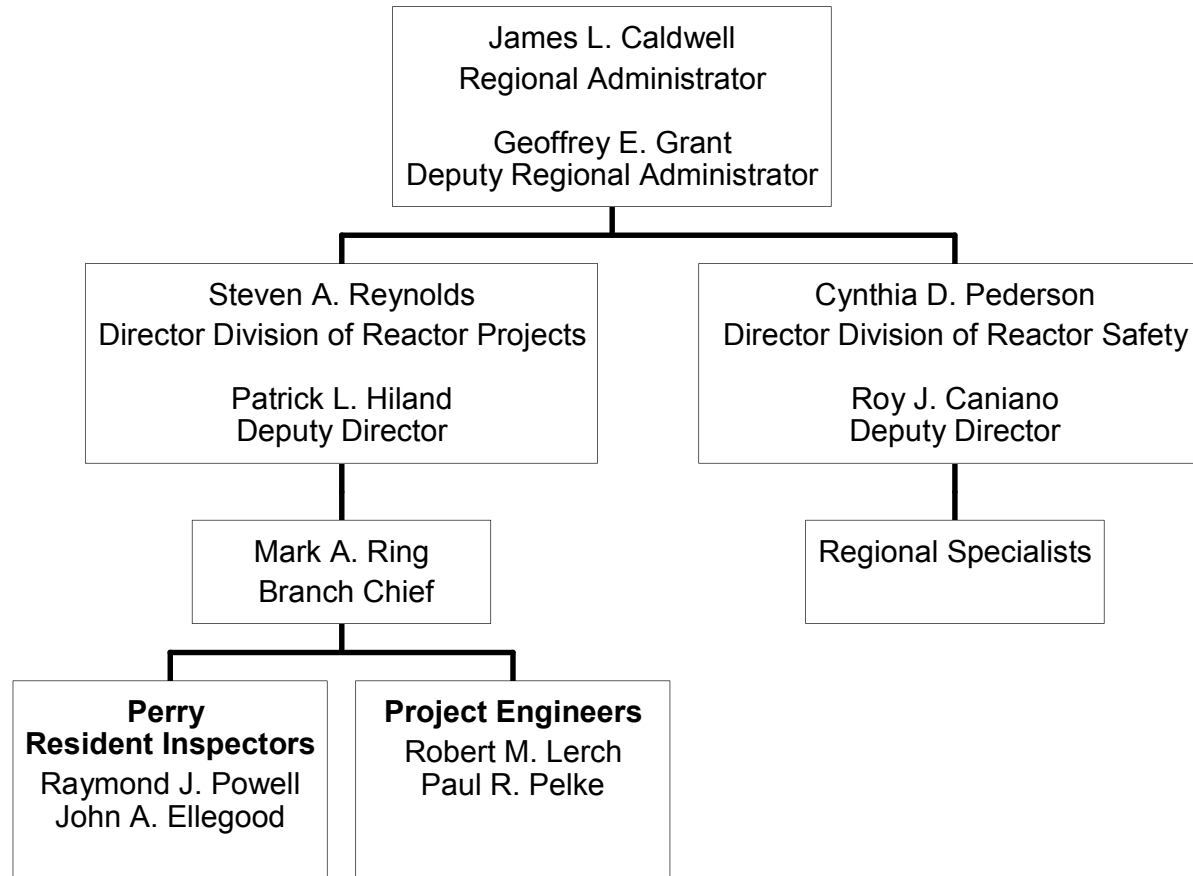
Agenda

- Introduction
- Review of Reactor Oversight Process
- National Summary of Plant Performance
- Discussion of Plant Performance Results
- Licensee Response and Remarks
- NRC Closing Remarks
- Break
- NRC available to address public questions

NRC Representatives

- James Caldwell, Regional Administrator
 - (630) 829-9657
- Steven Reynolds, Director, Division of Reactor Projects
 - (630) 829-9600
- Stephen Sands, Project Manager, NRR
 - (301) 415-3154
- Raymond Powell, Senior Resident Inspector
 - (440) 259-3610
- John Ellegood, Resident Inspector
 - (440) 259-3610
- Robert Lerch, Senior Project Engineer
 - (630) 829-9759
- Mark Ring, Branch Chief
 - (630) 829-9703

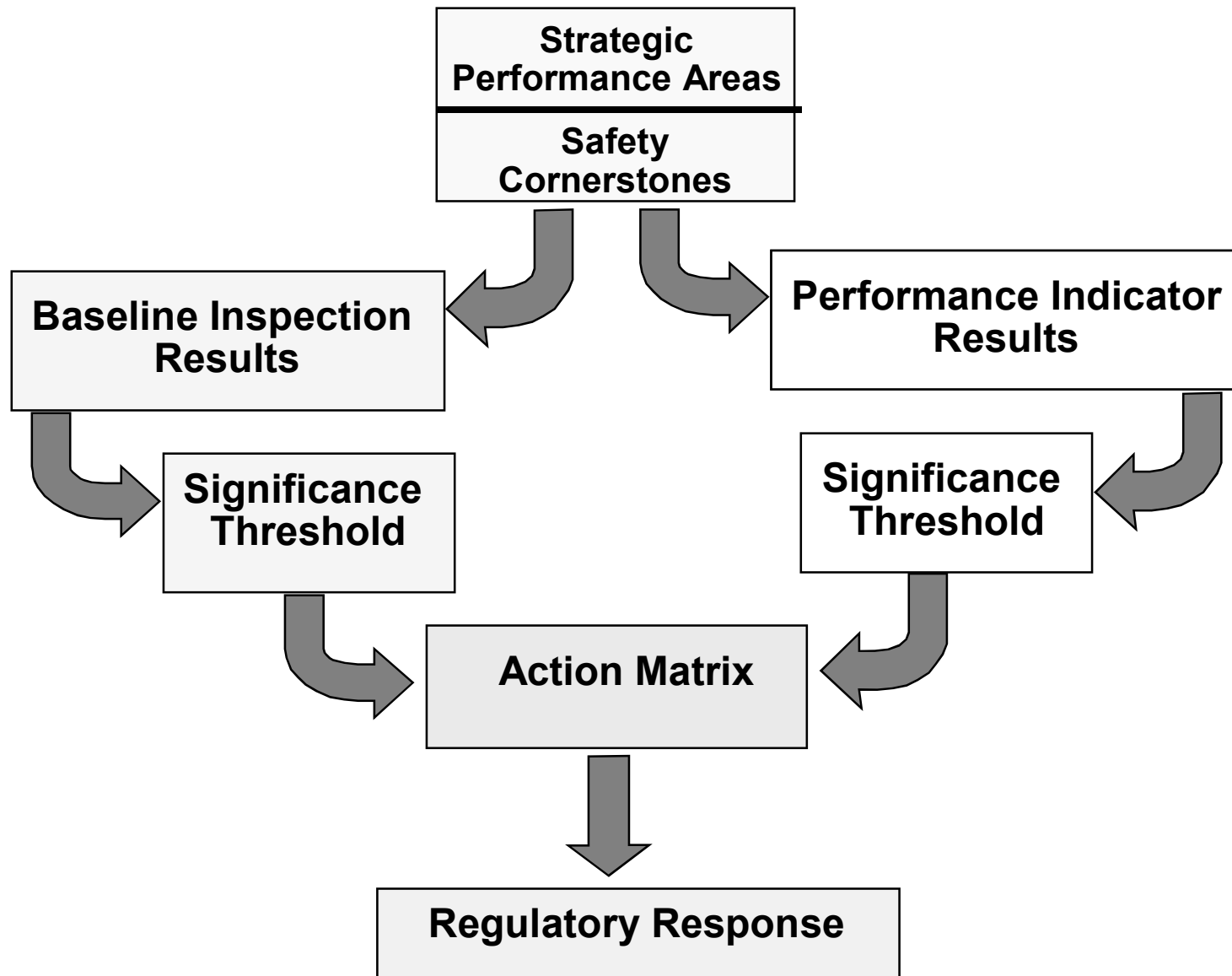
Region III Organization



NRC Performance Goals

- Maintain safety and protect the environment
- Enhance public confidence
- Improve effectiveness, efficiency, and realism of processes and decision making
- Reduce unnecessary regulatory burden

Reactor Oversight Process



Examples of Baseline Inspections

- Equipment Alignment ~92 hrs/yr
- Triennial Fire Protection ~200 hrs every 3 yrs
- Operator Response ~125 hrs/yr
- Emergency Preparedness ~80 hrs/yr
- Rad Release Controls ~100 hrs every 2 yrs
- Worker Radiation Protection ~100 hrs/yr
- Corrective Action Program ~250 hrs every 2 yrs
- Corrective Action Case Reviews ~60 hrs/yr

Significance Threshold

Performance Indicators

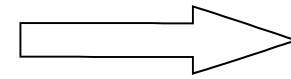
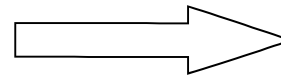
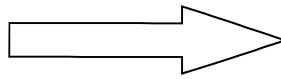
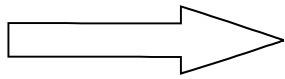
| | |
|----------------|-----------------------------|
| Green: | Only Baseline Inspection |
| White: | May increase NRC oversight |
| Yellow: | Requires more NRC oversight |
| Red: | Requires more NRC oversight |

Inspection Findings

| | |
|----------------|------------------------------|
| Green: | Very Low safety issue |
| White: | Low to moderate safety issue |
| Yellow: | Substantial safety issue |
| Red: | High safety issue |

Action Matrix Concept

| Licensee Response | Regulatory Response | Degraded Cornerstone | Multiple/Rep. Degraded Cornerstone | Unacceptable Performance |
|------------------------------|--------------------------------|---------------------------------|---|-------------------------------------|
|------------------------------|--------------------------------|---------------------------------|---|-------------------------------------|



Increasing Safety Significance

Increasing NRC Inspection Efforts

Increasing NRC/Licensee Management Involvement

Increasing Regulatory Actions

Purpose of Today's Meeting

- A public forum for discussion of the licensee's performance
- NRC will address the licensee performance issues identified in the annual assessment letter
- Licensee will respond to the information in the letter and inform the NRC of new or existing programs to maintain or improve their performance

National Summary of Plant Performance

Status at End of CY 2003

| | |
|--|----|
| Licensee Response | 75 |
| Regulatory Response | 22 |
| Degraded Cornerstone | 2 |
| Multiple/Repetitive Degraded Cornerstone | 3 |
| Unacceptable | 0 |

| | |
|-------------|------|
| Total Units | 102* |
|-------------|------|

*Davis-Besse is in IMC 0350 process

National Summary

- Performance Indicator Results (at end of CY 2003)
 - **Green** 1825
 - **White** 15
 - **Yellow** 0
 - **Red** 0

- Total Inspection Findings (at the end of CY 2003)
 - **Green** 748
 - **White** 19
 - **Yellow** 2
 - **Red** 4

Perry Assessment Results

(Jan 1 - Dec 31, 2003)

- Degraded Cornerstone Column of Action Matrix
- Due to 2 WHITE Findings in one cornerstone:
- WHITE Finding - HPCS failure to start in 2002

July IP 95001 Supplemental Inspection - Failed
December repeat of IP 95001 - Successful

- WHITE Finding - ESW “A” broken coupling

Safety Significant Findings or PIs

- WHITE Finding - HPCS failure to start in 2002
Supplemental complete - Dec 03
- WHITE Finding - ESW “A” broken coupling
- WHITE Finding - “A” waterleg pump
- WHITE Finding - Alert declaration
- WHITE PI - Occupational Radiation Exposure
Supplemental complete - Jan 04

Perry Inspection Activities

(Jan 1 - Dec 31, 2003)

- Problematic refueling outage - April/May
- Substantial Regional Inspection in RP & EP
- 19 GREEN Findings
- Blackout 2003
- Special Inspection of Blackout Anomalies

Perry Inspection Activities

(Jan 1 - Dec 31, 2004)

- IP 95002 Supplemental Inspection - May 2004
- IP 95001 Supplemental Inspection - May 2004
- Safety System Design Inspection - August 2004
- Problem Identification & Resolution Inspection in January 2005
- No refueling outage planned in 2004

Perry

Annual Assessment Summary

January 1- December 31, 2003

- FENOC operated the Perry Nuclear Power Plant in a manner that preserved public health and safety
- All cornerstone objectives were met with:
 - ☞ Two White findings identified in the Mitigating Systems Cornerstone
 - ☞ A White Emergency Preparedness finding
 - ☞ One White Performance Indicator in RP

Perry

Annual Assessment Summary (continued)

January 1- December 31, 2003

- NRC plans 2 additional supplemental inspections:
IP 95002 in Mitigating Systems
IP 95001 in Emergency Preparedness
- NRC plans baseline inspections at Perry for the remainder of the assessment areas

Licensee Response and Remarks

Mr. William R. Kanda
Vice President-Nuclear, Perry
First Energy Nuclear Operating Company

NRC Closing Remarks

Mr. James L. Caldwell
Regional Administrator
NRC Region III

Contacting the NRC

- Report an emergency
 - ▶ (301) 816-5100 (call collect)
- Report a safety concern:
 - ▶ (800) 695-7403
 - ▶ Allegation@nrc.gov
- General information or questions
 - ▶ www.nrc.gov
 - ▶ Select “What We Do” for Public Affairs

Reference Sources

- Reactor Oversight Process
 - ▶ <http://www.nrc.gov/NRR/OVERSIGHT/ASSESS/index.html>
- Public Electronic Reading Room
 - ▶ <http://www.nrc.gov/reading-rm.html>
- Public Document Room
 - ▶ 1-800-397-4209 (Toll Free)