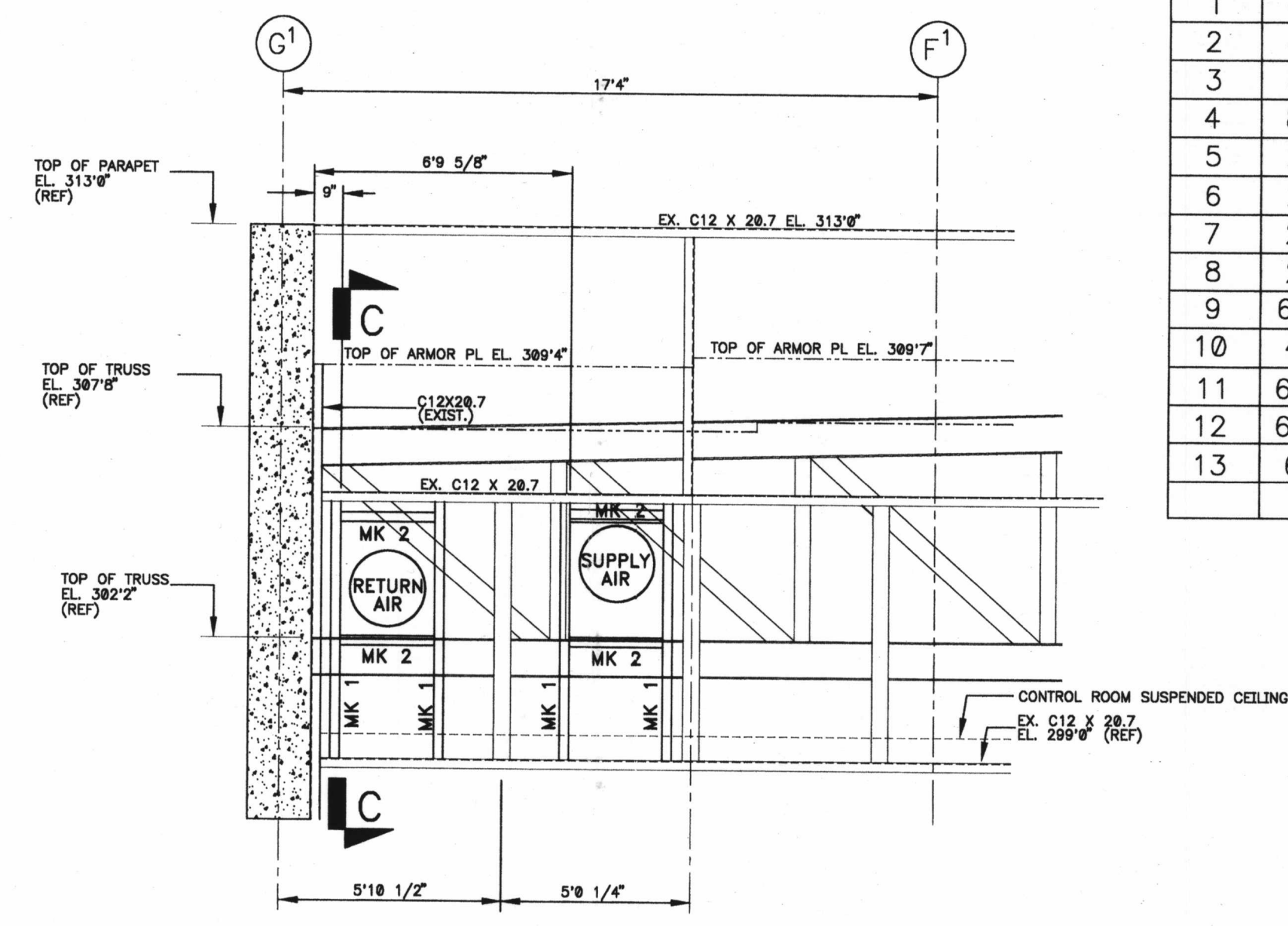
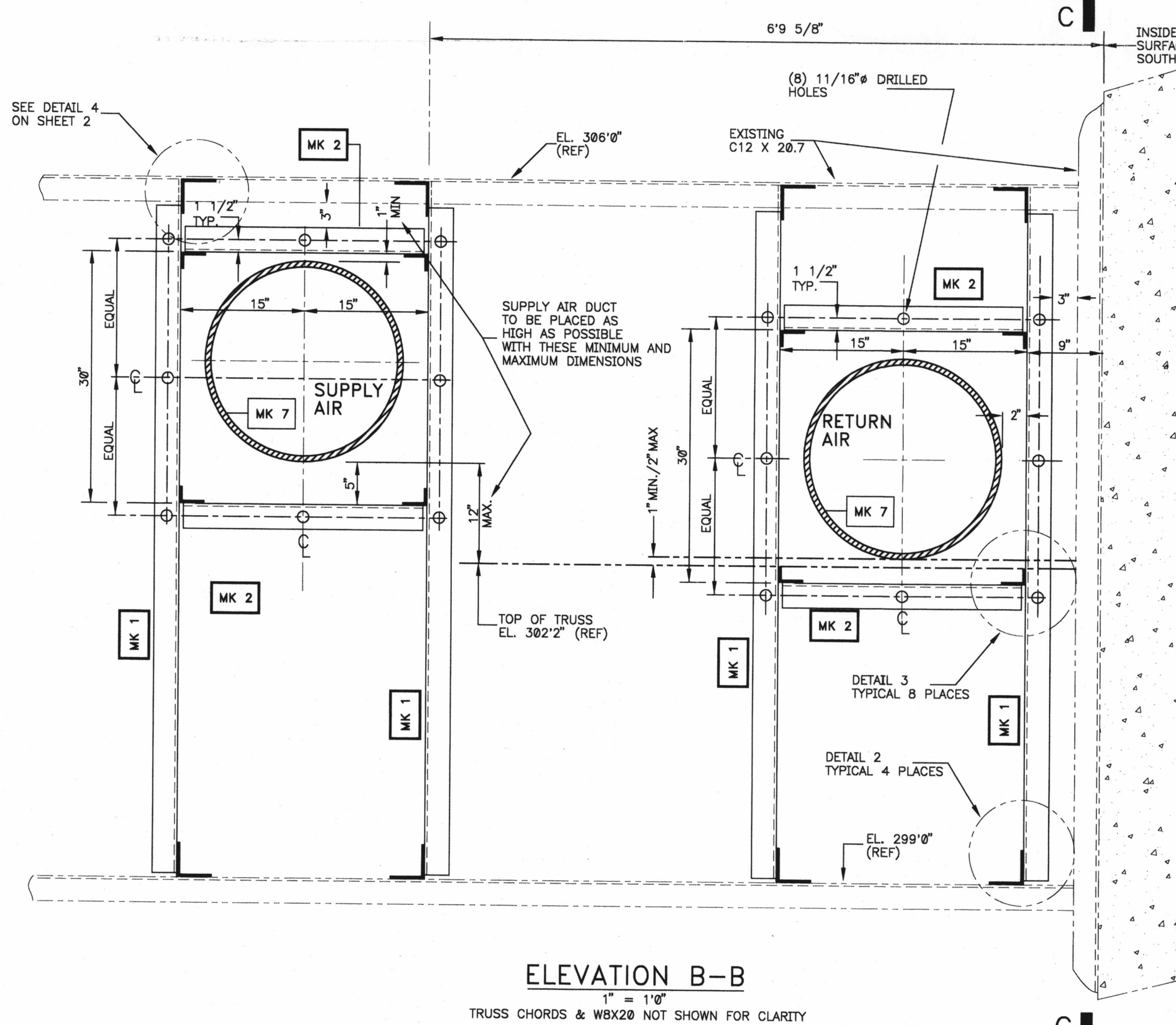


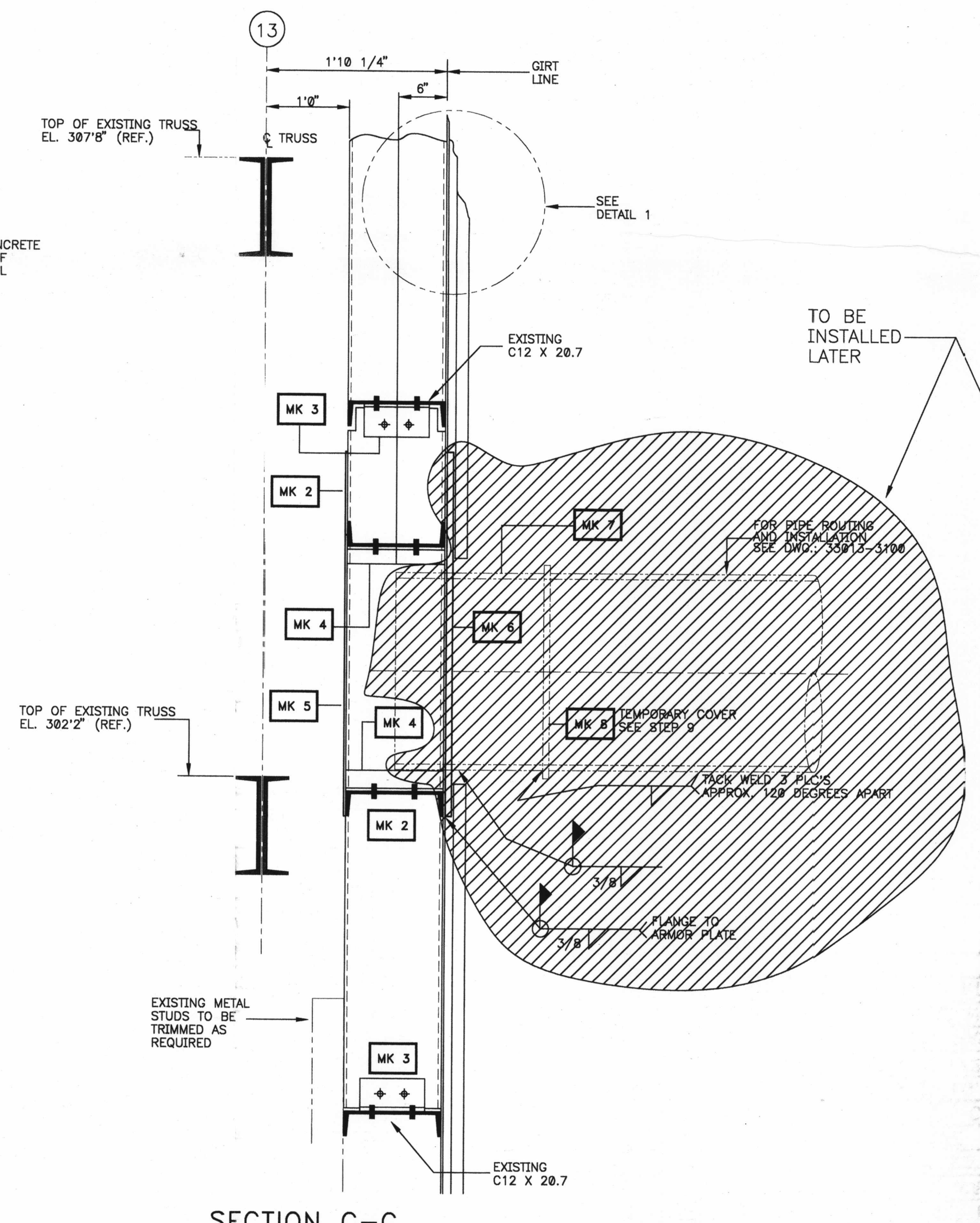
PLAN OF CONTROL BUILDING AT EL. 271'0"/300'
1/8" = 1'-0"



ELEVATION A-A
1/4" = 1'-0"
(BALLISTIC BARRIER AND SIDING NOT SHOWN FOR CLARITY)

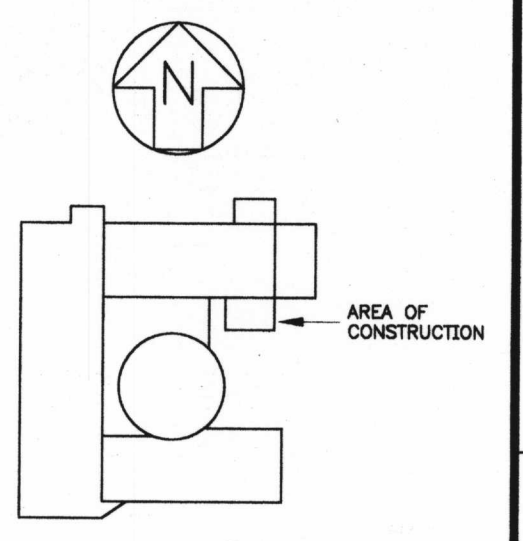


ELEVATION B-B
1" = 1'-0"
TRUSS CHORDS & W8X20 NOT SHOWN FOR CLARITY



SECTION C-C
1" = 1'-0"

MK #	QTY	DESCRIPTION	MAT'L	MAT'L ID
1	4	C12 X 20.7 X 6'11"	ASTM A36	9193383
2	4	C12 X 20.7 X 2'5"	ASTM A36	9193383
3	8	L3" X 3" X 1/4" X 8" LONG	ASTM A36	9193375
4	8	L3" X 2" X 1/4" X 12" LONG	ASTM A36	9196927
5	2	PL 1/4" X 3'0" X 3'6"	ASTM A36	9170995
6	2	PL 3/4" X 3'0" X 3'0"	ASTM A36	9189874
7	2	24" SCH. 40 PIPE	SA106 GR.B	5005575
8	2	PL 3/4" THICK X 26" CAP	ASTM A36	9189874
9	64	5/8" BOLTS X 2" LG.	ASTM A325	9191755
10	4	PL 3/8" X 8" X 2 1/2"	ASTM A36	9182667
11	64	5/8" HARDENED STEEL WASHER	ASTM F436	5001514
12	64	5/8" HEAVY HEX HEAD NUTS	ASTM A563 GRADE DH	9200061
13	6	CAULK, SEALANT, 732 RTV	-	8007471



LOCATION PLAN
CONTROL ROOM EAST WALL

- NOTES:
- ALL WORK IS SAFETY RELATED. MATERIALS TO BE SAFETY RELATED. WASHERS, CAULK, AND GASKET MATERIAL ARE NON-SAFETY.
 - ALL STEEL IS ASTM A36 OR EQUAL UNLESS NOTED.
 - WORK TO BE PERFORMED TO PROCEDURE GC 76.4. PAINTING IS CLASSIFIED AS NON SAFETY. NON SAFETY CARBOLINE 890 TO BE UTILIZED USING GC 76.11 AS A REFERENCE.
 - [MK 1], [MK 2] & [MK 5] ARE THE CONTROL ROOM EMERGENCY ZONE BOUNDARY ONCE THE 1/4" ARMOR PLATE WALL HAS BEEN CUT, UNTIL THE CREATS SYSTEM HAS BEEN PRESSURE TESTED UNDER THE PCR 2000-0024. FOLLOWING PRESSURE TEST [MK 5] & [MK 2] MAY BE REMOVED IF NEEDED TO SUPPORT CONTROL ROOM DUCT INSTALLATION.
 - SECURITY SHALL BE NOTIFIED TO POST AREA PRIOR TO BREACHING ARMOR PLATE.
 - PIPE TO PIPE AND PIPE TO PLATE WELDS ARE TO BE PERFORMED IN ACCORDANCE WITH D1.1, 1990 EDITION OR LATER. PLATE TO ARMOR PLATE WELDS ARE TO BE PERFORMED IN ACCORDANCE WITH GENERAL WELDING SPECIFICATION "GWS PCR 2003-0020".

- NEW PENETRATION INSTALLATION STEPS:
- LAYOUT AND INSTALL STRUCTURAL FRAMING MEMBERS INSIDE CONTROL ROOF ANNULUS USING BOLTED CONNECTIONS.
 - ALL [MK 1] & [MK 2] PIECES TO SET FLUSH UP AGAINST EXISTING 1/4" THICK ARMOR PLATE.
 - AFTER ALL [MK 1] AND [MK 2] PIECES ARE INSTALLED, SEAL INSIDE OF PENETRATION WITH [MK 13]. INSTALL [MK 13] ON FACE OF [MK 1] AND [MK 2] AND COVERING ENDS OF [MK 4].
 - SYSTEM ENGINEER AND QC TO VERIFY GAPS INSIDE PENETRATIONS ARE SEALED WITH [MK 13] PRIOR TO BOLTING [MK 5] IN PLACE.
 - AFTER [MK 5] IS INSTALLED, REMOVE OUTER SIDING TO EXPOSE ARMOR PLATE AT PENETRATION LOCATIONS.
 - FOLLOWING STEPS #7 AND #8 SHALL BE PERFORMED 1 PENETRATION AT A TIME AND SHALL BE PLANNED TO BE COMPLETED IN THE SAME DAY.
 - POST FIRE WATCH AT INTERIOR TO MONITOR [MK 1], [MK 2], AND [MK 5] AND CUT OPENING IN 1/4" ARMOR PLATE.
 - INSTALL [MK 8] AND 24" PIPING [MK 7]. REFERENCE DRAWING 33013-3100 FOR PIPE ROUTING.
 - [MK 8] MAY BE INSTALLED AS A TEMPORARY COVER IF NEEDED TO RELAX SECURITY POSTINGS WHILE PIPE IS NOT COMPLETELY INSTALLED THROUGH THE RELAY ROOM ANNEX ROOF.
 - REPLACE, PAINT AND REPAIR SIDING PER ENGINEERING DIRECTION.

REFERENCE DRAWINGS:
D-502-023
D-502-073
D-501-024

REFERENCE PCR'S:
2000-0024
2003-0019

NUCLEAR SAFETY RELATED				
ORIGINAL	DATE	BY	CHKD	REV
REVISION	DATE	BY	CHKD	REV
CAD FILENAME	3C305201	DRAWN BY	CHECKED	RESP. ENGINEER
CONSTRUCTION				
LIMITED CONSTRUCTION AS NOTED				
PRELIMINARY NOT FOR CONSTRUCTION				
FABRICATION				
AS BUILT				
DATE	RELEASED FOR		ENGR.	
FACILITY	GINNA	ROCHESTER GAS & ELECTRIC CORP ROCHESTER, NEW YORK		
SCALE	1/4" = 1'-0"	UN.NOTED		
CONTROL ROOM EAST WALL PENETRATIONS FOR CREATS DUCTS				
JOB NO.	PCR 2003-0020	DRAWING NO.	33013-3102	SHT 1
REV.				

D02