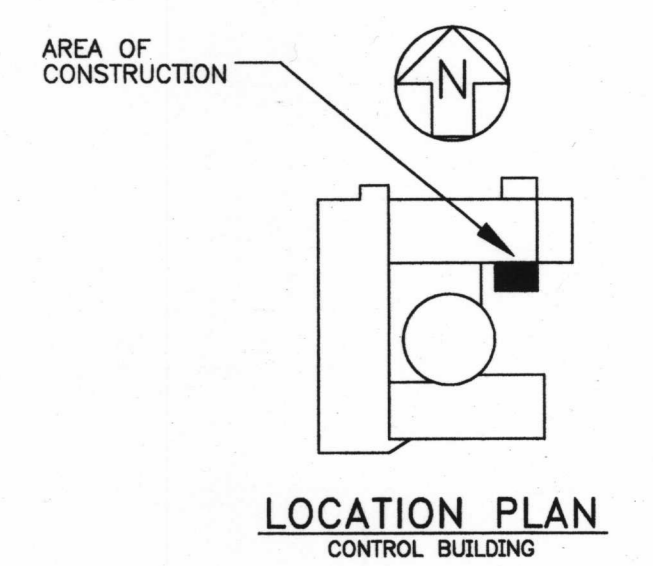
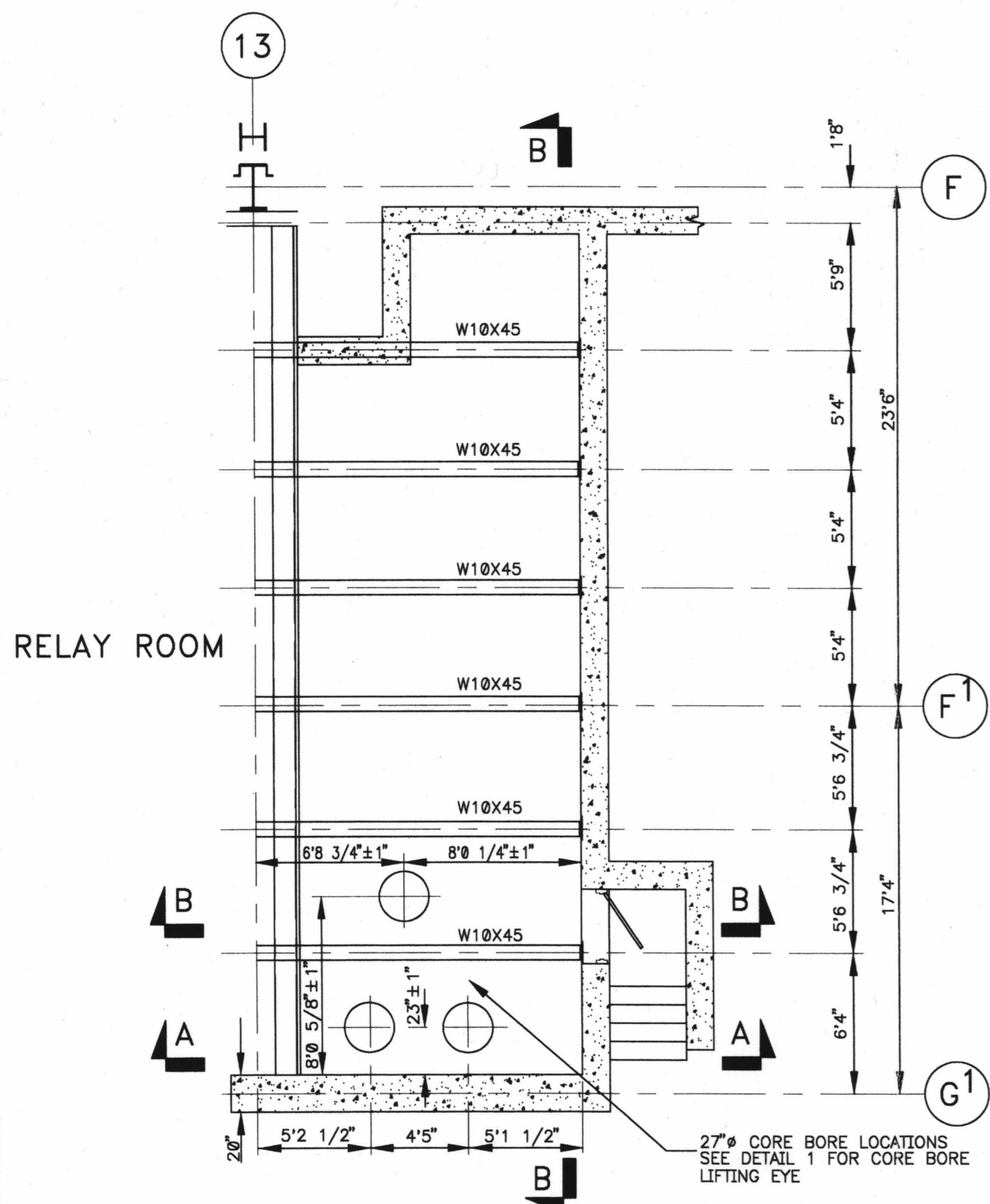


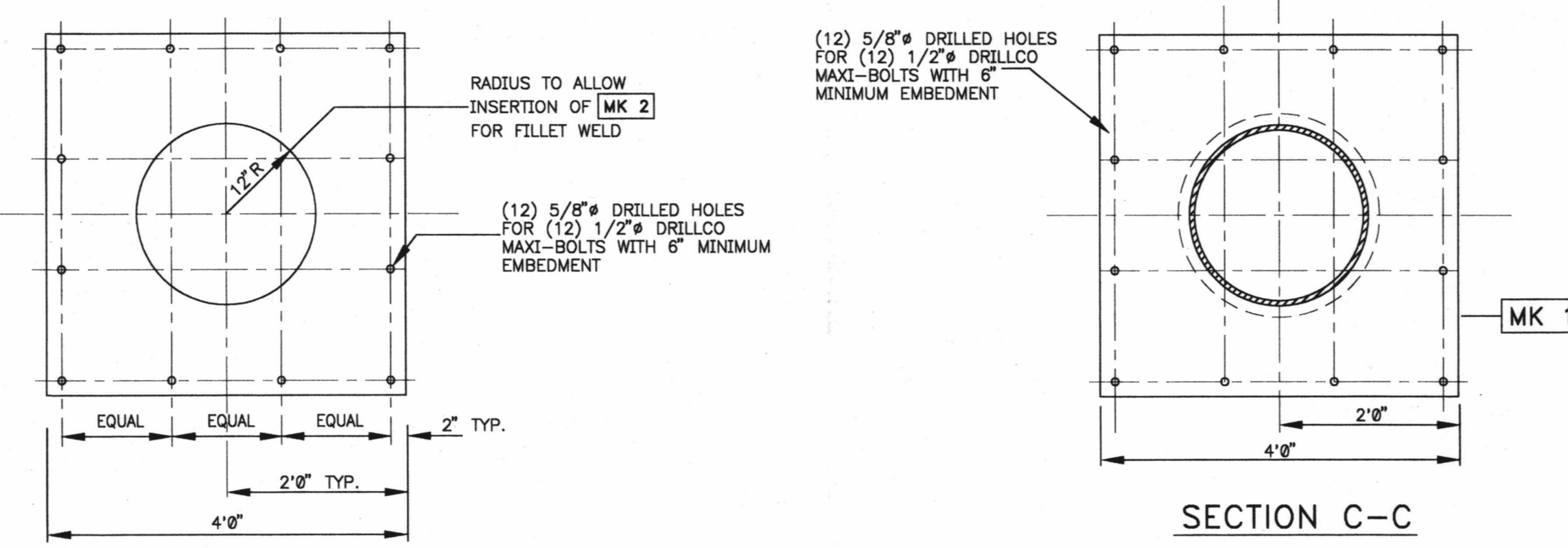
BILL OF MATERIAL			
MARK	QTY	DESCRIPTION	MAT'L ID
1	3	PL 1-1/4" X 4'0" X 4'0", ASTM A36	9189904
2*	3	24" PIPE, SCHED. 40 X 3'6" LG. CUT TO SUIT	5005575
3	3	PL 1/4" X 2'3" W, ASTM A36	9170995
4	36	1/2" HILTI KWIK MAXI-BOLTS W/6" EMBED.	5005616
5	6	1/2" HILTI KWIK BOLT W/2 1/2" MIN. EMB.	9165673
6	3	PL 3/8" X 6" H X 14" W, ASTM A36	9182667
7	6	PL 3/8" X 6" H X 8" L, ASTM A36	9182667
8	2	40% ELBOW	5005576
9	1	24" PIPE, SCHED. 40 X 3'6" LG. CUT TO SUIT	5005575
10	1	24" PIPE, SCHED. 40 X 3'6" LG. CUT TO SUIT	5005575
11	1	24" PIPE, SCHED. 40 X 3'6" LG. CUT TO SUIT	5005575
12	1	24" PIPE, SCHED. 40 X 3'6" LG. CUT TO SUIT	5005575
13	1	24" PIPE, SCHED. 40 X 3'6" LG. CUT TO SUIT	5005575



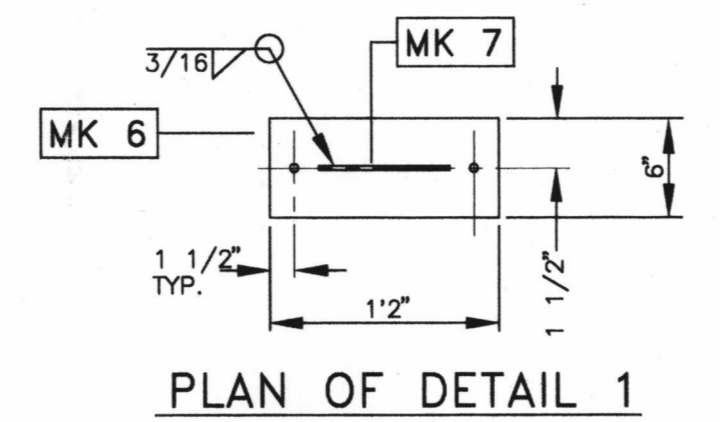
- NOTES:
- ALL WORK IS SAFETY RELATED.
 - WEIGHT OF 27" DIAMETER CONCRETE COREBORES ARE APPROXIMATELY 600 LBS. EACH.
 - HILTI KWIK BOLTS MAY BE USED FOR TEMPORARY APPLICATIONS AND SHALL BE INSTALLED PER GC 76.3.
 - PIPING INSULATION IS NON-SAFETY AND TO BE INSTALLED IN ACCORDANCE WITH SPECIFICATION ME-269.
 - PRIOR TO CORE BORING 27" ROOF PENETRATIONS, ENSURE TEMPORARY SHORING AND WATER CONTROLS ARE IN PLACE INSIDE THE RELAY ROOM ANNEX.
 - ALL STEEL IS ASTM A36 OR EQUAL. ALL PIPE IS ASTM A106 OR EQUAL.
 - SECURITY SHALL BE NOTIFIED PRIOR TO BREACHING RELAY ROOM ANNEX ROOF, REMOVAL OF CONCRETE CORES, OR REMOVAL OF TEMPORARY COVER MK 3.
 - PIPE TO PIPE AND PIPE TO PLATE WELDS ARE TO BE PERFORMED IN ACCORDANCE WITH D1.1, 1990 EDITION OR LATER, REFERENCE GWS 200 FOR REQUIREMENTS.
 - CORE BORE LIFT EYE AND ASSOCIATED HILTI'S ARE NON-SAFETY RELATED.
 - PIPING INSTALLATION SHALL BE PERFORMED IN CONJUNCTION WITH DWG: 33013-3102.
 - REMOVAL AND RE-INSTALLATION OF RELAY ROOM ANNEX ROOF IS NON-SAFETY RELATED.
 - REBAR MAY BE CUT FOR INSTALLATION OF CORE HOLES AND MAXI-BOLTS ONLY.
 - DRILLCO MAXI-BOLTS ARE TO BE INSTALLED IN ACCORDANCE WITH GC-76.5.



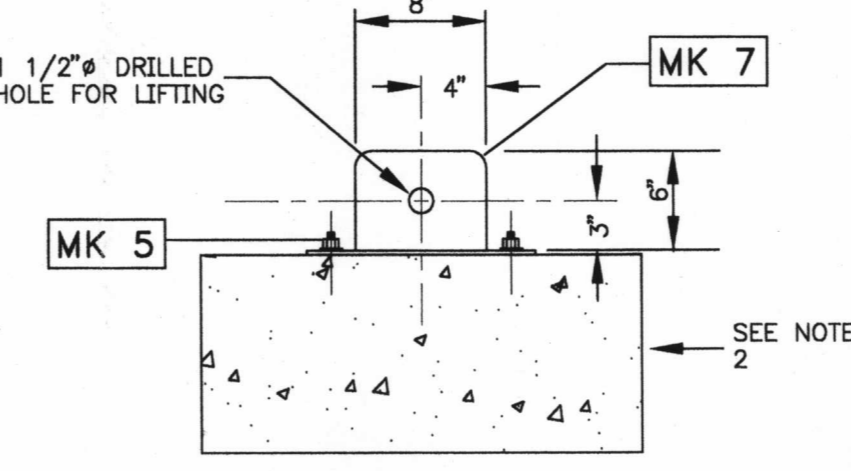
PLAN OF RELAY ROOM ANNEX PIPE PENETRATIONS @ EL. 289'6"



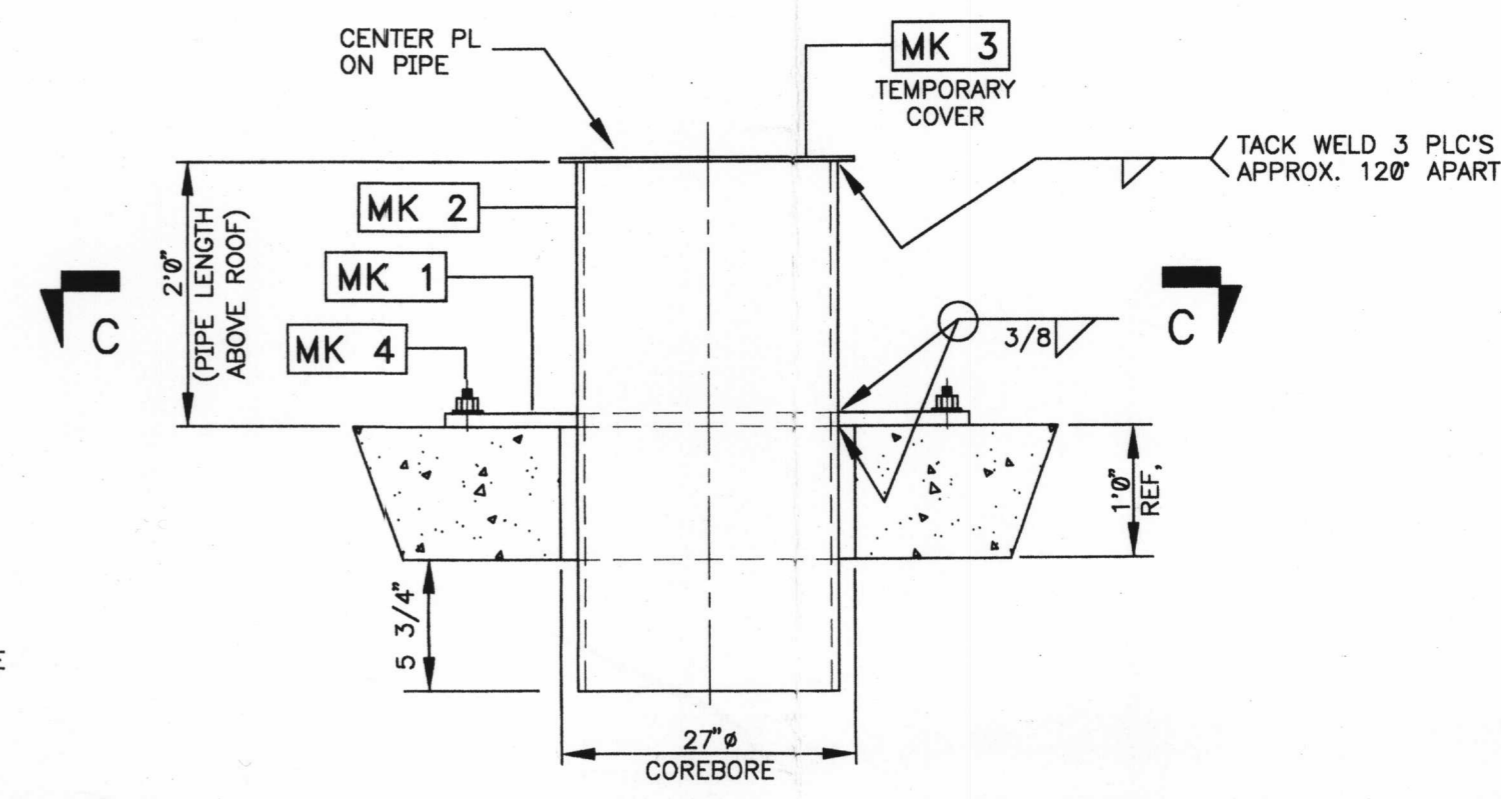
MK 1 DETAIL
RELAY ROOM ANNEX ROOF BASEPLATE
3 REQUIRED



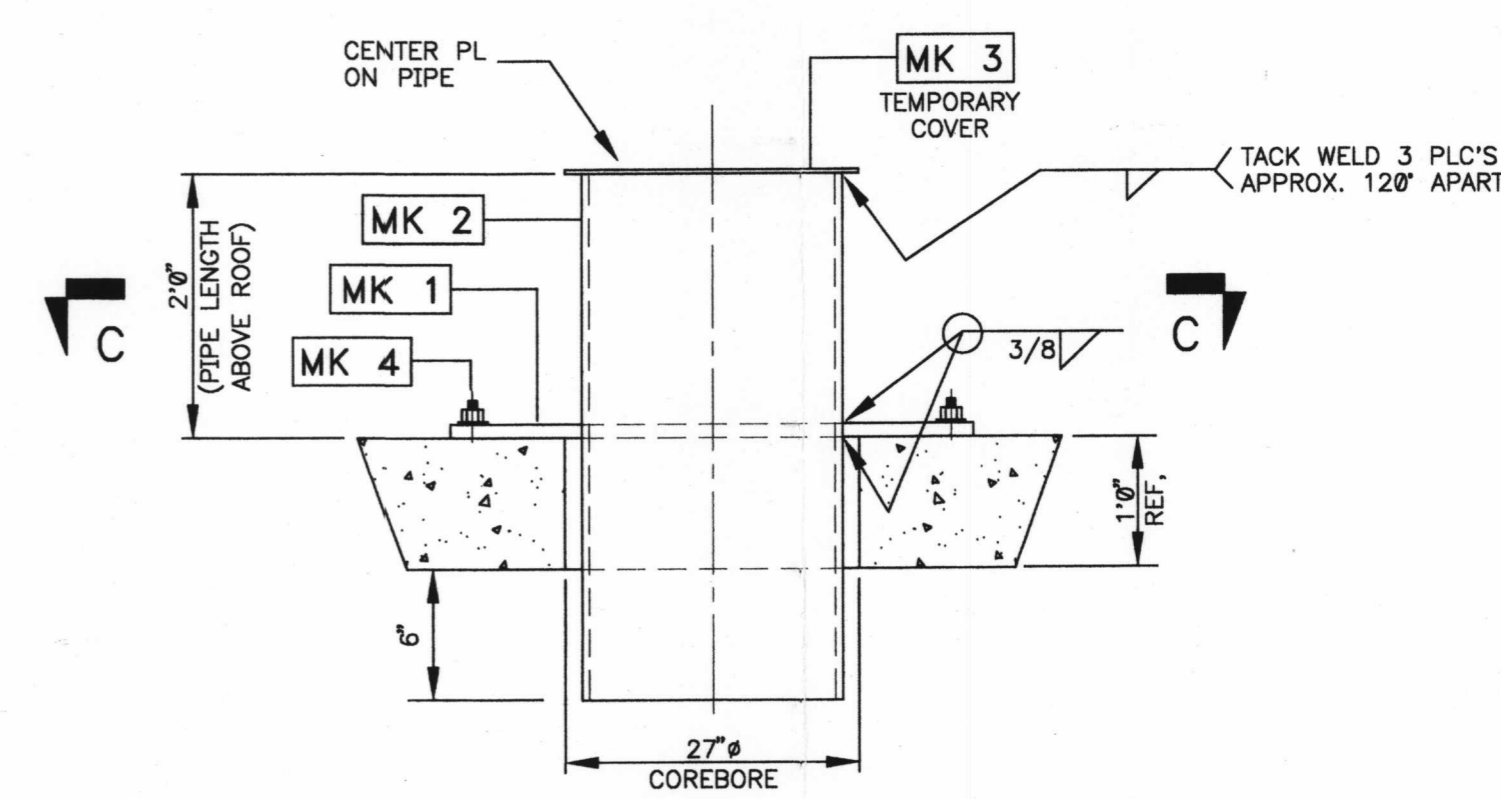
PLAN OF DETAIL 1



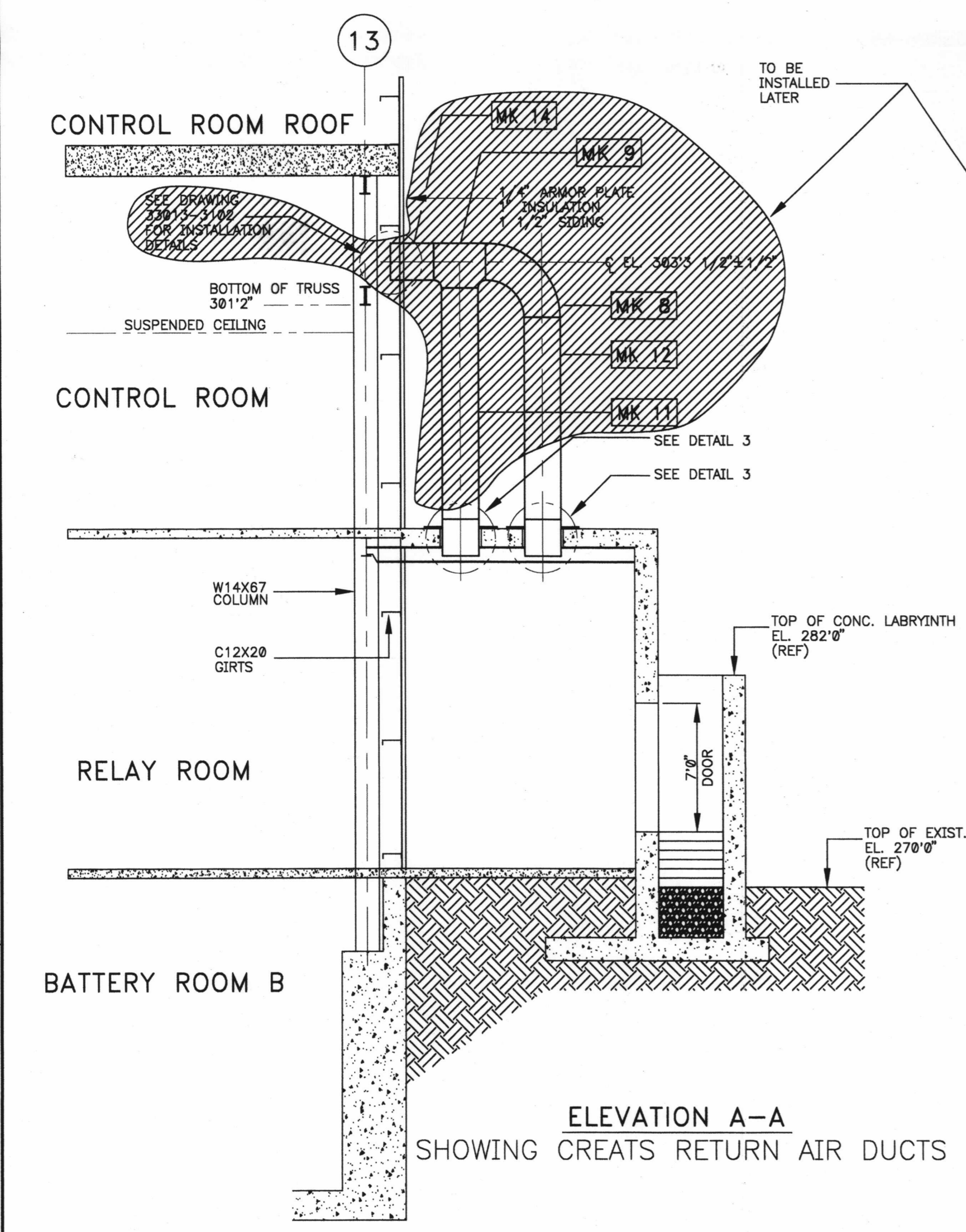
DETAIL 1
CORE BORE LIFTING EYE
3 REQUIRED



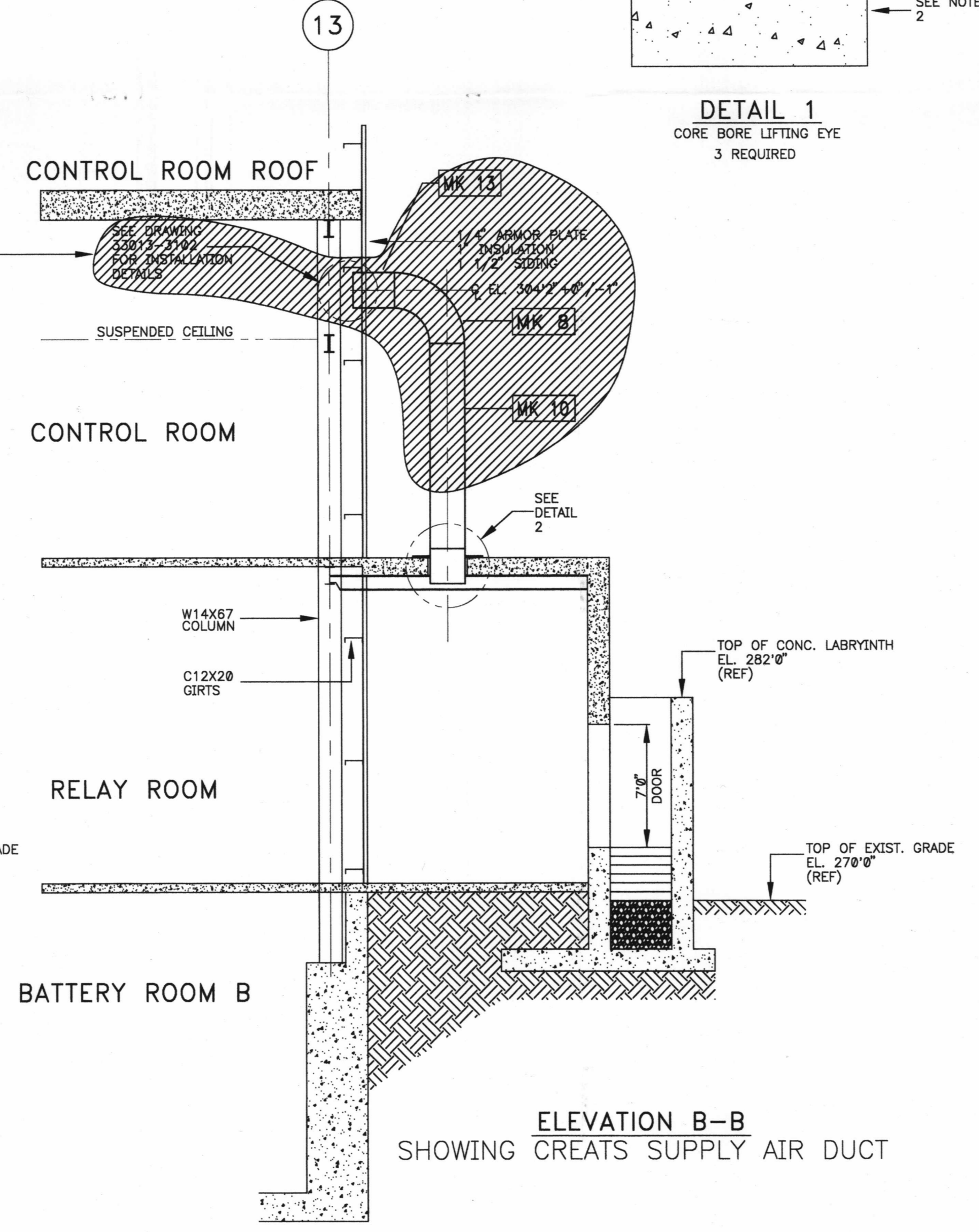
DETAIL 2
SUPPLY AIR PIPE PENETRATION
TYPICAL 1 PLACE



DETAIL 3
RETURN AIR PIPE PENETRATION
TYPICAL 2 PLACES



ELEVATION A-A
SHOWING CREATS RETURN AIR DUCTS



ELEVATION B-B
SHOWING CREATS SUPPLY AIR DUCT

REFERENCE DRAWINGS:
33013-3102 NEW GREATS SUPPLY AND RETURN PENETRATIONS
33013-1653, SHTS. 1-4, RELAY ROOM MISSILE SHIELD WALL

NUCLEAR SAFETY RELATED			
ORIGINAL	DATE	INITIALS	REVISION
2/11/04	10/22/03	AKJ/S	1
CAD FILENAME	3M3100	DRAWN BY	CHECKED BY
2/11/04			
LIMITED CONSTRUCTION: AS NOTED			
PRELIMINARY NOT FOR CONSTRUCTION			
BIDDING PURPOSES			
AS BUILT			
DATE	RELEASED FOR	ENGR.	
FACILITY	GINNA	ROCHESTER GAS & ELECTRIC CORP ROCHESTER, NEW YORK	
SCALE	1/4" = 1'0"		
RELAY ROOM ANNEX ROOF PENETRATIONS AND CREATS DUCTS			
JOB NO.	PCR 2003-0020	DRAWING NO.	33013-3100
		REV.	