



APR 14 2004
LR-N04-0166

United States Nuclear Regulatory Commission
Document Control Desk
Washington, DC 20555

**CORE OPERATING LIMITS REPORT - CYCLE 16, REVISION 1
SALEM GENERATING STATION UNIT NO. 1
FACILITY OPERATING LICENSE DPR-70
DOCKET NO. 50-272**

In accordance with section 6.9.1.9 of the Salem Unit 1 Technical Specifications, PSEG Nuclear LLC submits Revision 1 of the Core Operating Limits Report (COLR) for Salem Unit 1 Cycle 16 (NFS-0215, Rev. 1) in Attachment 1 to this letter.

Should you have any questions regarding this submittal, please contact Mr. Paul Duke at (856) 339-1466.

Sincerely,

A handwritten signature in black ink, appearing to read "S. Mannon".

S. Mannon
Manager - Nuclear Safety & Licensing

Attachment

A001

APR 14 2004

C Mr. H. J. Miller, Administrator - Region I
U. S. Nuclear Regulatory Commission
475 Allendale Road
King of Prussia, PA 19406

Mr. D. Collins, Licensing Project Manager - Salem
U. S. Nuclear Regulatory Commission
Mail Stop 8C2
Washington, DC 20555

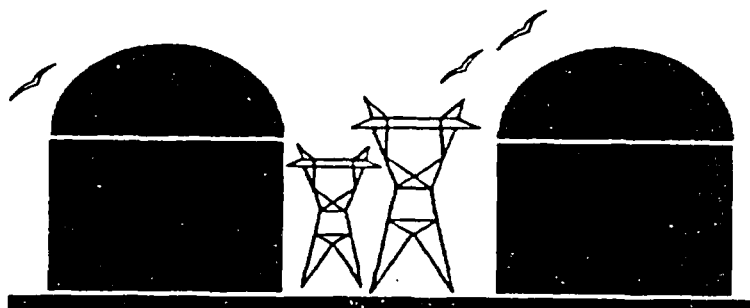
USNRC Senior Resident Inspector - Salem (X24)

Mr. K. Tosch, Manager IV
Bureau of Nuclear Engineering
PO Box 415
Trenton, NJ 08625

**SALEM GENERATING STATION UNIT NO. 1
FACILITY OPERATING LICENSE DPR-70
DOCKET NO. 50-272**

**CORE OPERATING LIMITS REPORT - CYCLE 16
REVISION 1**

Core Operating Limits Report for Salem Unit 1, Cycle 16



PREPARED: Frances Pimentel DATE: 3/3/04
Frances A. Pimentel
Staff Engineer

REVIEWED: Michael R. Merholz DATE: 3/4/2004
Michael R. Merholz
Senior Engineer

CONCURRENCE: Thomas K. Ross DATE: 3/18/2004
Thomas K. Ross
Supervisor, SR&SA

APPROVED: Michael M. Mannion DATE: 3/24/2004
Michael M. Mannion
Manager, Nuclear Fuels & Reactor Engineering

LIST OF EFFECTIVE PAGES

Page

Revision Level

Pages 1-12

1

SUMMARY OF CHANGES

Revision 1: The purpose of Revision 1 is to incorporate the provisions of Amendment No. 262 regarding Technical Specification 3.9.1 Boron Concentration.

TABLE OF CONTENTS

| <u>Section Number</u> | <u>Section Title</u> | <u>Page Number</u> |
|---------------------------|---|------------------------|
| | Table of Contents | 2 |
| | List of Figures | 3 |
| 1.0 | Core Operating Limits Report | 4 |
| 2.0 | Operating Limits | 5 |
| 2.1 | Moderator Temperature Coefficient (Specification 3/4.1.1.4) | 5 |
| 2.2 | Control Rod Insertion Limits (Specification 3/4.1.3.5) | 6 |
| 2.3 | Axial Flux Difference (Specification 3/4.2.1) | 6 |
| 2.4 | Heat Flux Hot Channel Factor – $F_q(z)$ (Specification 3/4.2.2) | 6 |
| 2.5 | Nuclear Enthalpy Rise Hot Channel Factor $F_{\Delta H}^N$ (Specification 3/4.2.3) | 8 |
| 2.6 | Boron Concentration (Specification 3/4.9.1) | 8 |
| 3.0 | References | 9 |

LIST OF FIGURES

| <u>Figure Number</u> | <u>Figure Title</u> | <u>Page Number</u> |
|--------------------------|---|------------------------|
| 1 | Rod Bank Insertion Limits vs. Thermal Power | 10 |
| 2 | Axial Flux Difference Limits as a Function of Rated Thermal Power | 11 |
| 3 | $K(z)$ – Normalized $F_q(z)$ as a Function of Core Height | 12 |

1.0 CORE OPERATING LIMITS REPORT

This Core Operating Limits Report (COLR) for Salem Unit 1 Cycle 16 has been prepared in accordance with the requirements of Technical Specification 6.9.1.9.

The Technical Specifications affected by this report are listed below:

- 3/4.1.1.4 Moderator Temperature Coefficient
- 3/4.1.3.5 Control Rod Insertion Limits
- 3/4.2.1 Axial Flux Difference
- 3/4.2.2 Heat Flux Hot Channel Factor - $F_Q(Z)$
- 3/4.2.3 Nuclear Enthalpy Rise Hot Channel Factor - $F^N_{\Delta H}$
- 3/4.9.1 Boron Concentration

2.0 OPERATING LIMITS

The cycle-specific parameter limits for the specifications listed in Section 1.0 are presented in the following subsections. These limits have been developed using the NRC-approved methodologies specified in Technical Specification 6.9.1.9.

2.1 Moderator Temperature Coefficient (Specification 3/4.1.1.4)

2.1.1 The Moderator Temperature Coefficient (MTC) limits are:

The BOL/ARO/HZP-MTC shall be less positive than $0 \Delta k/k/^{\circ}F$.

The EOL/ARO/RTP-MTC shall be less negative than $-4.5 \times 10^{-4} \Delta k/k/^{\circ}F$.

2.1.2 The MTC Surveillance limit is:

The 300 ppm/ARO/RTP-MTC should be less negative than or equal to $-3.8 \times 10^{-4} \Delta k/k/^{\circ}F$.

where: BOL stands for Beginning of Cycle Life

ARO stands for All Rods Out

HZP stands for Hot Zero THERMAL POWER

EOL stands for End of Cycle Life

RTP stands for Rated THERMAL POWER

2.2 Control Rod Insertion Limits (Specification 3/4.1.3.5)

2.2.1 The control rod banks shall be limited in physical insertion as shown in Figure 1.

2.3 Axial Flux Difference (Specification 3/4.2.1)

[Constant Axial Offset Control (CAOC) Methodology]

2.3.1 The Axial Flux Difference (AFD) target band shall be the more restrictive of (+6%, -9%) or the target band as defined in Reference 2.

2.3.2 The AFD Acceptable Operation Limits are provided in Figure 2.

2.4 Heat Flux Hot Channel Factor - $F_Q(Z)$ (Specification 3/4.2.2)

[F_{xy} Methodology]

$$F_Q(Z) \leq \frac{F_Q^{RTP}}{P} * K(Z) \text{ for } P > 0.5$$

$$F_Q(Z) \leq \frac{F_Q^{RTP}}{0.5} * K(Z) \text{ for } P \leq 0.5$$

where: $P = \frac{\text{THERMAL POWER}}{\text{RATED THERMAL POWER}}$

2.4.1 $F_Q^{RTP} = 2.40$

2.4.2 $K(Z)$ is provided in Figure 3.

2.4.3 $F_{xy}^L = F_{xy}^{RTP} [1.0 + PF_{xy}(1.0 - P)]$

where: $F_{xy}^{RTP} = 1.75$ for unrodded top core planes 1 through 21
 1.80 for unrodded bottom core planes 22 through 61
 2.13 for core plane containing Bank D control rods

$PF_{xy} = 0.3$

- 2.4.4 If the Power Distribution Monitoring System (PDMS) is used for core power distribution surveillance and is OPERABLE, as defined in Technical Specification 3.3.3.14, the uncertainty, U_{FQ} , to be applied to the Heat Flux Hot Channel Factor $F_Q(z)$ shall be calculated by the following formula:

$$U_{FQ} = \left(1.0 + \frac{U_Q}{100.0} \right) \cdot U_e$$

where:

U_Q = Uncertainty for power peaking factor as defined in equation 5-19 of Reference 1.

U_e = Engineering uncertainty factor.
= 1.03

Note: U_{FQ} = PDMS Surveillance Report Core Monitor Fxy Uncertainty in %.

- 2.4.5 If the INCORE movable detectors are used for core power distribution surveillance, the uncertainty, U_{FQ} , to be applied to the Heat Flux Hot Channel Factor $F_Q(z)$ shall be calculated by the following formula:

$$U_{FQ} = U_{qu} \cdot U_e$$

where:

U_{qu} = Base F_Q measurement uncertainty.
= 1.05

U_e = Engineering uncertainty factor.
= 1.03

2.5 Nuclear Enthalpy Rise Hot Channel Factor - $F_{\Delta H}^N$ (Specification 3/4.2.3)

$$F_{\Delta H}^N = F_{\Delta H}^{RTP} [1.0 + PF_{\Delta H} (1.0 - P)]$$

where: $P = \frac{\text{THERMAL POWER}}{\text{RATED THERMAL POWER}}$

2.5.1 $F_{\Delta H}^{RTP}(\text{RFA with IFM}) = 1.65$ and $F_{\Delta H}^{RTP}(\text{V5H without IFM}) = 1.57$

2.5.2 $PF_{\Delta H} = 0.3$

2.5.3 If the Power Distribution Monitoring System (PDMS) is used for core power distribution surveillance and is OPERABLE, as defined in Technical Specification 3.3.3.14, the uncertainty, $U_{F_{\Delta H}}$, to be applied to the Nuclear Enthalpy Rise Hot Channel Factor, $F_{\Delta H}^N$, shall be calculated by the following formula:

$$U_{F_{\Delta H}} = 1.0 + \frac{U_{\Delta H}}{100.0}$$

where:

$U_{\Delta H}$ = Uncertainty for enthalpy rise as defined in equation 5-19 of Reference 1.

2.5.4 If the INCORE movable detectors are used for core power distribution surveillance, the uncertainty, $U_{F_{\Delta H}}$, to be applied to the Nuclear Enthalpy Rise Hot Channel Factor $F_{\Delta H}^N$ shall be calculated by the following formula:

$$U_{F_{\Delta H}} = U_{F_{\Delta Hm}}$$

where:

$U_{F_{\Delta Hm}}$ = Base $F_{\Delta H}$ measurement uncertainty.
= 1.04

2.6 Boron Concentration (Specification 3/4.9.1)

A Mode 6 boron concentration, maintained at or above 2164 ppm, in the Reactor Coolant System, the fuel storage pool, the refueling canal, and the refueling cavity ensures the most restrictive of the following reactivity conditions is met:

- a) A K-effective (K_{eff}) of 0.95 or less at All Rods In (ARI), Cold Zero Power (CZP) conditions with a 1% $\Delta k/k$ uncertainty added.
- b) A K_{eff} of 0.99 or less at All Rods Out (ARO), CZP conditions with a 1% $\Delta k/k$ uncertainty added.
- c) A boron concentration of greater than or equal to 2000 ppm, which includes a 50 ppm conservative allowance for uncertainties.

3.0 REFERENCES

1. WCAP-12472-P-A, BEACON Core Monitoring and Operations Support System, August 1994.
2. SI.RE-RA.ZZ-0011(Q), Tables.
3. Salem Nuclear Generating Station Unit No. 1, Amendment No. 262, License No. DPR-70, Docket No. 50-272.

FIGURE 1

ROD BANK INSERTION LIMITS vs. THERMAL POWER

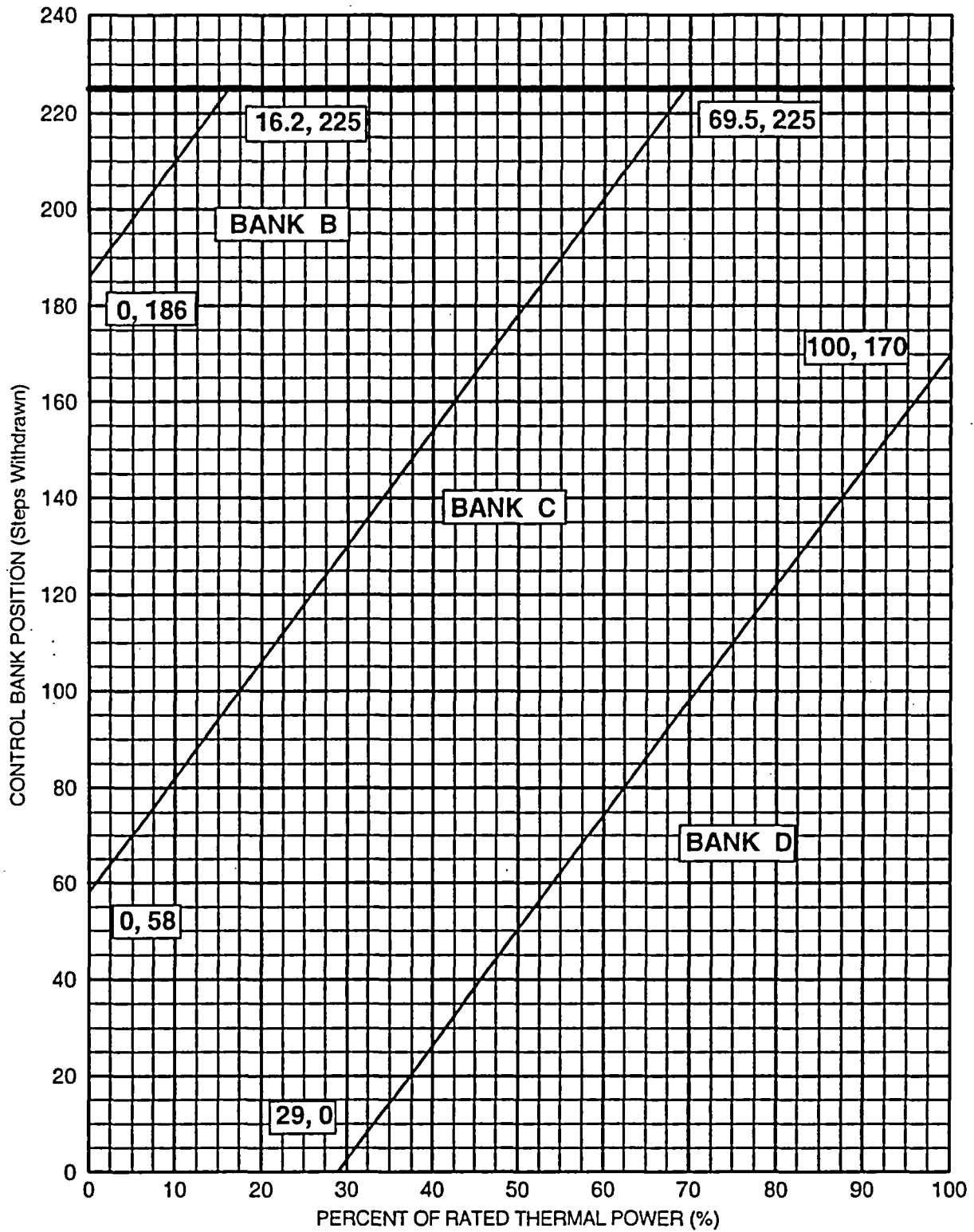


FIGURE 2

AXIAL FLUX DIFFERENCE LIMITS AS A FUNCTION OF
RATED THERMAL POWER

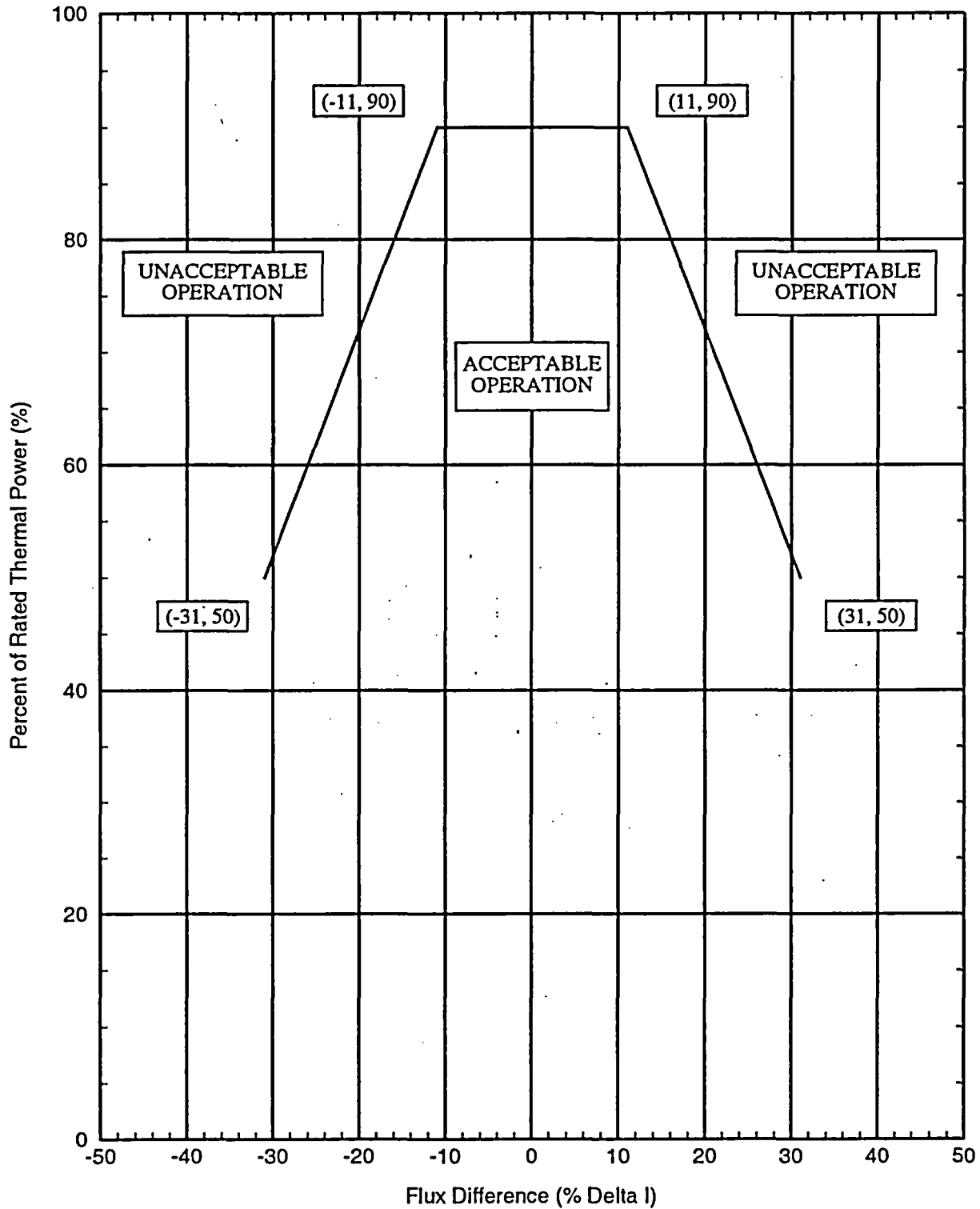


FIGURE 3

K(Z) - NORMALIZED FQ(Z) AS A FUNCTION OF CORE HEIGHT

