



UNITED STATES
NUCLEAR REGULATORY COMMISSION
REGION IV
611 RYAN PLAZA DRIVE, SUITE 400
ARLINGTON, TEXAS 76011-4005

April 20, 2004

Rick A. Muench, President and
Chief Executive Officer
Wolf Creek Nuclear Operating Corporation
P.O. Box 411
Burlington, KS 66839

SUBJECT: SUMMARY OF ANNUAL PERFORMANCE ASSESSMENT
MEETING FOR WOLF CREEK GENERATING STATION

Dear Mr. Muench:

This refers to the meeting conducted in Burlington, Kansas, on April 6, 2004, to discuss the safety performance at Wolf Creek Generating Station between January 1 and December 31, 2003.

Topics discussed during the meeting included the Reactor Oversight Process, the safety performance at Wolf Creek Generating Station, and other industry and regulatory topics that may have been of interest to the local area residents. Members of the public present at the meeting were allowed to ask questions and comment on the proceedings.

In accordance with Section 2.390 of the NRC's "Rules of Practice," Part 2, Title 10, Code of Federal Regulations, a copy of this letter will be placed in the NRC's Public Document Room.

Should you have any questions concerning this matter, we will be pleased to discuss them with you.

Sincerely,

David N. Graves, Chief
Project Branch B
Division of Reactor Projects

Docket: 50-482
License: NPF-42

Enclosures:
1. Attendance List
2. Presentation

cc w/enclosures:
Site Vice President
Wolf Creek Nuclear Operating Corp.
P.O. Box 411
Burlington, KS 66839

Jay Silberg, Esq.
Shaw, Pittman, Potts & Trowbridge
2300 N Street, NW
Washington, DC 20037

Supervisor Licensing
Wolf Creek Nuclear Operating Corp.
P.O. Box 411
Burlington, KS 66839

Chief Engineer
Utilities Division
Kansas Corporation Commission
1500 SW Arrowhead Rd.
Topeka, KS 66604-4027

Office of the Governor
State of Kansas
Topeka, KS 66612

Attorney General
120 S.W. 10th Avenue, 2nd Floor
Topeka, KS 66612-1597

County Clerk
Coffey County Courthouse
110 South 6th Street
Burlington, KS 66839-1798

Chief, Radiation and Asbestos
Control Section
Kansas Department of Health
and Environment
Bureau of Air and Radiation
1000 SW Jackson, Suite 310
Topeka, KS 66612-1366

Frank Moussa, Technological
Hazards Administrator
Department of the Adjutant General
2800 SW Topeka Blvd.
Topeka, KS 66611-1287

Gene Merry, Chairman
Coffey County Commissioner
110 South 6th Street
Burlington, KS 66839

Rebecca Jewett
Coffey County Emergency
Preparedness
110 South 6th Street
Burlington, KS 66839

The Honorable Rick Raymer
Mayor, City of Burlington
City Hall
P.O. Box 207
Burlington, KS 66839

The Honorable Bill Freeman
Mayor, City of LeRoy
713 Main Street
LeRoy, KS 66857

The Honorable Mark Petterson
Mayor, City of New Strawn
City Hall
P.O. Box 922
New Strawn, KS 66839-0922

The Honorable Craig Meader
Mayor, City of Waverly
P.O. Box 308
Waverly, KS 66871

Dave Beck
Allen County Emergency
Preparedness Coordinator
Allen County Courthouse
P.O. Box 433
Iola, KS 66749

Jackie Miller
Lyon County Emergency
Preparedness Coordinator
425 Mechanic St.
Emporia, KS 66801

Gary Benjamin
Anderson County Emergency
Preparedness Coordinator
315 Orange Street
Garnett, KS 66032

Cecil L. Wright, Executive Director
Public Service Commission
301 E. High
P.O. Box 360
Jefferson City, MO 65102

Federal Emergency Management Agency
Mr. Dick Hainje, Regional Director
Region VII
2323 Grand Blvd., Suite 900
Kansas City, MO 64108-2670

Ronald A. Kucera, Deputy Director
for Public Policy
Department of Natural Resources
P.O. Box 176
Jefferson City, MO 65102

Scott Clardy, Director
Section for Environmental Public Health
P.O. Box 570
Jefferson City, MO 65102-0570

Jerry Uhlmann, Director
State Emergency Management Agency
P.O. Box 116
Jefferson City, MO 65102-0116

Randy Rogers, Sheriff
Coffey County Sheriff's Dept.
110 South 6th Street
Burlington, KS 66839

The Honorable Larry Kelley
Mayor, City of Gridley
P.O. Box 182
Gridley, KS 66852

The Honorable Ed Fisher
Mayor, City of Lebo
P.O. Box 14
Lebo, KS 66856-0014

Robbie Atkins, Sheriff
Allen County Courthouse
P.O. Box 433
Iola, KS 66749

Tim Sipe
Coffey County Commissioner
110 South 6th Street
Burlington, KS 66839

Larry Crotts
Coffey County Commissioner
110 South 6th Street
Burlington, KS 66839

Kraig Kirchner
Coffey County Commissioner
110 South 6th Street
Burlington, KS 66839

Fred Rowley, Vice Chairman
Coffey County Commissioner
110 South 6th Street
Burlington, KS 66839

Electronic distribution by RIV:
Regional Administrator (**BSM1**)
DRP Director (**ATH**)
DRS Director (**DDC**)
Senior Resident Inspector (**FLB2**)
Resident Inspector (**TBR2**)
SRI, Callaway (**MSP**)
Branch Chief, DRP/B (**DNG**)
Senior Project Engineer, DRP/B (**RAK1**)
Staff Chief, DRP/TSS (**PHH**)
RITS Coordinator (**KEG**)

ADAMS: Yes No Initials: ca
 Publicly Available Non-Publicly Available Sensitive Non-Sensitive

R:\ WC\2004\WC4-6-04MS-EOC.wpd

RIV: C:DRP/B				
DNGraves;df				
<i>ms</i>				
4/22/04				

OFFICIAL RECORD COPY

T=Telephone

E=E-mail

F=Fax

END-OF-CYCLE MEETING ATTENDANCE

LICENSEE/FACILITY	Wolf Creek Nuclear Operating Corporation/ Wolf Creek Nuclear Station
DATE/TIME	April 6, 2004 at 7:00 pm
LOCATION	Burlington High School Multimedia Room (use west entrance) 830 Cross Street Burlington, Kansas
NAME (PLEASE PRINT)	ORGANIZATION
Fred Rowley, Sr.	Coffey County Commission
LARRY CROTT	"
GENE MERRY	Coffey County Commissioner
Bill Mulkenburg	WOLF CREEK
Bill Goshorn	KEPCO - Wolf Creek Coordinator
Jennifer Yunk	WCNOC
Jeanne Ryan	WCNOC
Susan Maycock	WCNOC
Chuck Sibley	WCNOC
David Gram	NRC-RTI
Mark Satorius	NRC-RTI
Frank Bruch	NRC-RTI

END-OF-CYCLE MEETING ATTENDANCE

LICENSEE/FACILITY	Wolf Creek Nuclear Operating Corporation/ Wolf Creek Nuclear Station
DATE/TIME	April 6, 2004 at 7:00 pm
LOCATION	Burlington High School Multimedia Room (use west entrance) 830 Cross Street Burlington, Kansas
NAME (PLEASE PRINT)	ORGANIZATION
<i>Trevor Rhoades</i>	<i>NRC-RTT</i>
<i>R. Murch</i>	<i>WCNOC</i>
<i>D. Jacobs</i>	<i>WCNOC</i>
<i>K. Scherich</i>	<i>WCNOC</i>

ANNUAL ASSESSMENT MEETING



**Nuclear Regulatory Commission
Region IV**

NRC Meeting Purpose

- **Meeting with Licensee**
- **Inform Public of Plant Performance**

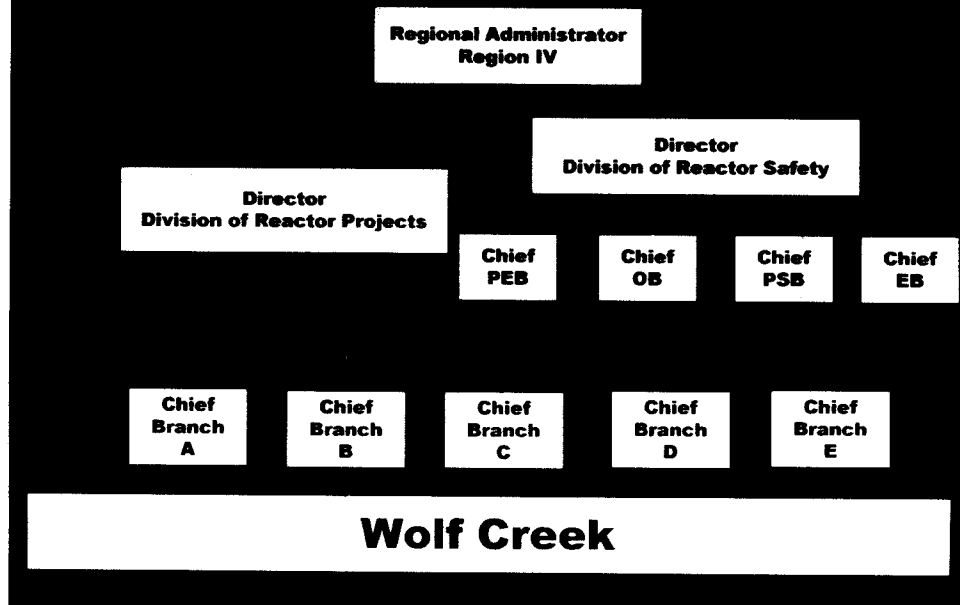


NRC Meeting Guidelines

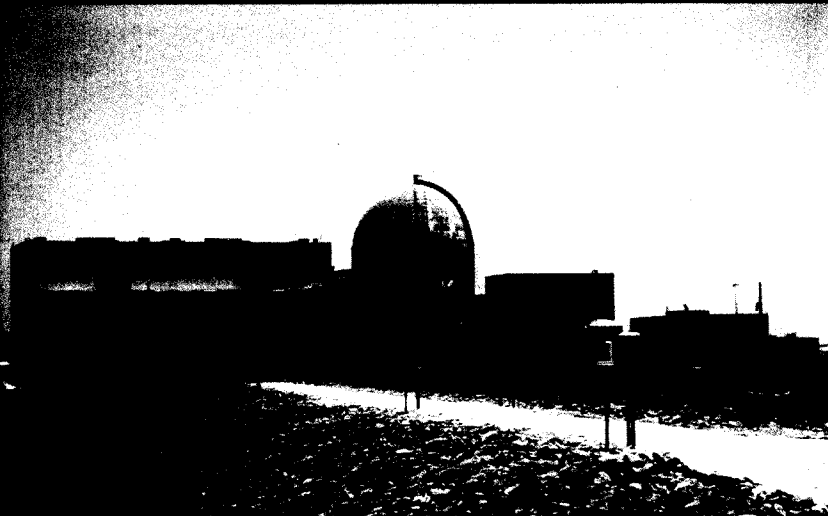
- Registration Table
- Questions and Answers
- Feedback Forms
- Handouts



Regional Organization



Wolf Creek



Meeting Agenda

- **REGULATORY OVERSIGHT**
- **PLANT SAFETY PERFORMANCE SUMMARY**
- **ADDITIONAL FOCUS AREAS**
- **QUESTIONS AND ANSWERS**



NRC PERFORMANCE GOALS

- **Maintain public safety, protect the environment and promote common defense and security**
- **Enhance public confidence**
- **Improve:**
 - Effectiveness
 - Efficiency
 - Realism of processes and decision making
- **Reduce unnecessary regulatory burden**

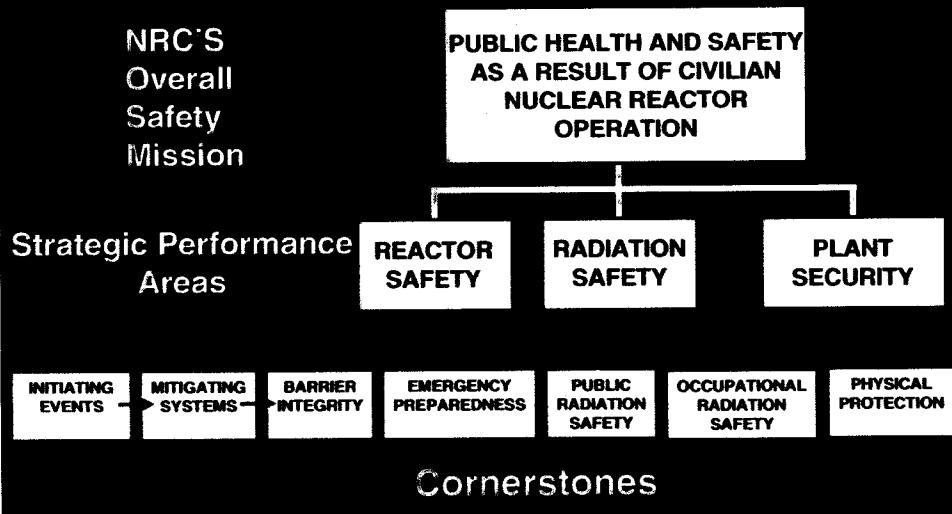


NRC Oversight Activities

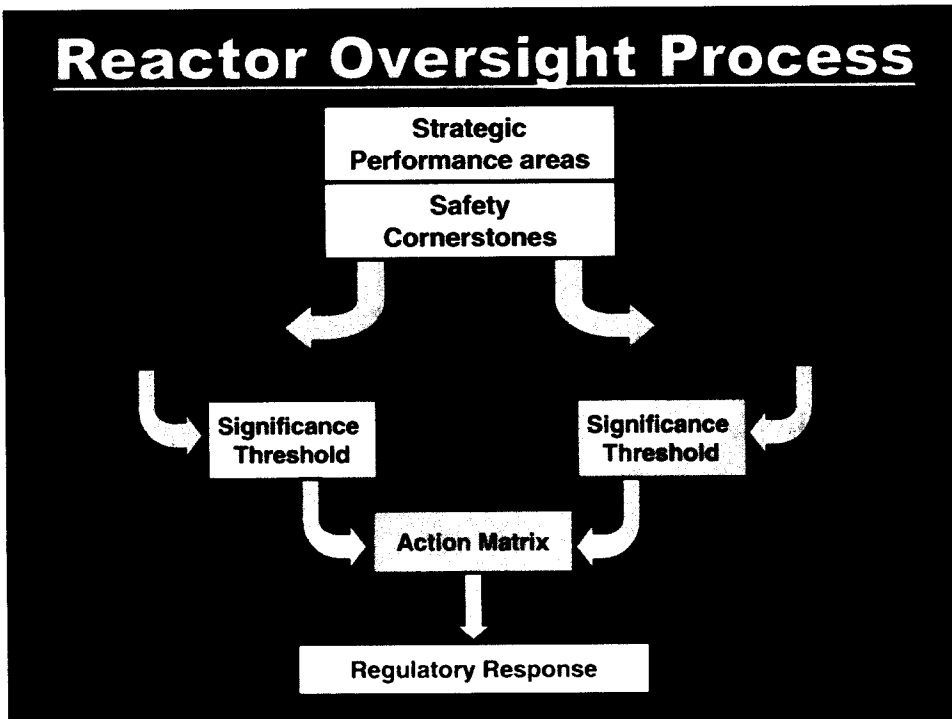
- **Provide assurance plants are:**
 - Operating safely
 - Complying with regulations
- **Based on a logical and sound framework**
- **Inspections focused on key safety areas**
- **Objective indicators of performance**
- **Assessment program triggers regulatory actions**



Reactor Oversight Process



Reactor Oversight Process



Baseline Inspection Program

- **Gathers objective evidence of plant safety**
- **Conducted at all plants**
- **Focuses on safety-significant:**
 - **systems**
 - **components**
 - **activities**
 - **events**



Baseline Inspection Program

- **Inspection reports describe significant findings and non-compliance**
- **Inspection reports are publicly accessible**

www.nrc.gov/reading-rm/adams/web-based.html



Event Follow-up and Supplemental Inspections

- Review events for significance
- Follow-up significant inspection findings
- Determine causes of performance declines
- Provide for graduated response



Reactor Oversight Process

SAFETY SIGNIFICANCE

- very low

WHITE

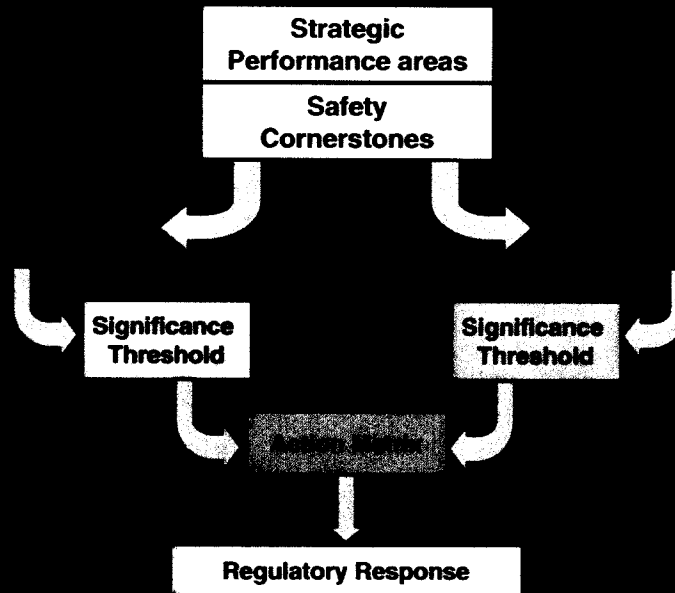
- low to moderate

YELLOW

- substantial

- high

Reactor Oversight Process



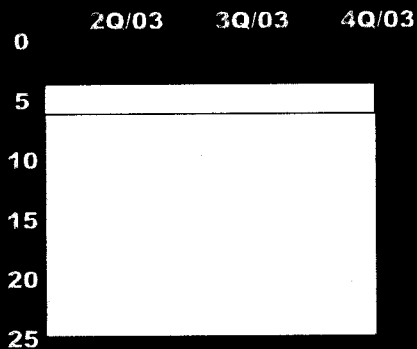
Performance Indicator Program

- Licensee monitors key safety parameters
- Data supplied to NRC quarterly
- Regulatory actions based on data



Performance Indicators

Unplanned Scrams per 7000 critical hours



Thresholds:

White >3.0,

Yellow >6.0,

>25.0

Unplanned scrams per 7000 critical hours	2Q/03	3Q/03	4Q/03
Actual scrams	0	1	0
Critical hours	2183	2171	1145
Indicator value	0.8	1.6	1.8

Performance Indicators

- **Performance indicator results and other assessment information available on the NRC's public web site:**

http://www.nrc.gov/NRR/OVERSIGHT/ASSESS/WC/wc_chart.html



Inspection Effort

- **Resident Inspectors**
 - Stationed at the Plant
 - Prompt Response Capability
- **Regional Inspectors**
 - Specialized
 - Inspection Teams
- **Office of Nuclear Reactor Regulation**
 - Review License Change Requests



Overall NRC Effort

1187

618

492

Headquarters - 492

Regional - 1187

Resident - 618

Total hours - 2297



Key Aspects of the Assessment Program

- **Objective review of licensee performance**
- **“Action Matrix” to determine agency response in three areas:**
 - Inspection
 - Management Involvement
 - Regulatory Actions
- **Plant specific assessment letters**
- **Information on NRC public web site**



Plant Safety Performance Summary



Inspection Results

NRC and Licensee identified inspection findings were of very low safety significance

No special or supplemental inspections necessary



Performance Indicator Results

All performance indicators within the Licensee Control Band (Green)



ROP Action Matrix Summary for 2003

	Licensee Response	Regulatory	Degraded Cornerstone	Multiple/ Repetitive Degraded Cornerstone	Unacceptable Performance
Nationwide	74	23	2	3	0
Region IV	17	3	0	1	0

National vs Regional Summary CY 2003

	Green			Red
National Performance Indicator Results (CY 2003)	1828	15	0	0
Regional Performance Indicator Results (CY 2003)	376	2	0	0
	Green			Red
National Total Inspection Findings (CY 2003)	760	16	2	3
Regional Total Inspection Findings (CY 2003)	177	2	0	0

Assessment Conclusion

Cornerstone objectives fully met

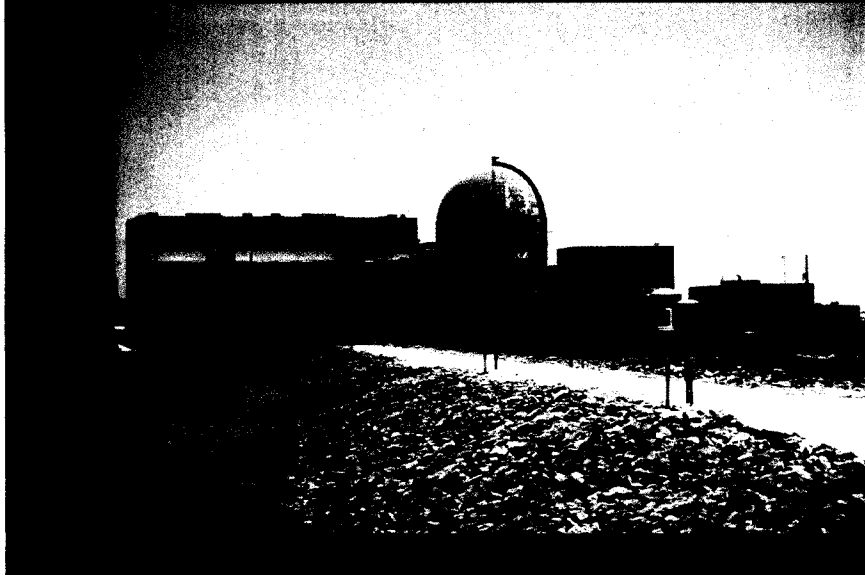
Licensee effectively managed:

- Reactor safety
- Radiation safety
- Plant security

Wolf Creek operated in a manner that preserved the health and safety of the public



LICENSEE RESPONSE



Additional Focus Areas

- **Security at Nuclear Power Plants**
- **Recent Industry Issues**



Security at Nuclear Power Plants

Nuclear Regulatory Commission:

- **Expanded involvement with FBI, law enforcement and other intelligence agencies**
- **Frequent communications with Office of Homeland Security, DOD, FAA, FEMA and other federal agencies**
- **Continue to work in concert with:**
 - **Licensees**
 - **State and local officials**



Security at Nuclear Power Plants

Threat Advisory and Protective Measures System:

- communicates threats affecting NRC licensees
- corresponds to color-coded Homeland Security Presidential Directive
- Identifies specific actions to be taken by NRC licensees for each threat level



Recent Industry Issues

Bulletin 2003-01: Potential Impact of Debris Blockage on Emergency Sump Recirculation at Pressurized Water Reactors

Bulletin 2003-02: Leakage from Reactor Pressure Vessel Lower Head Penetrations and Reactor Coolant Pressure Boundary Integrity

Bulletin 2003-04: Rebaseline Data in Nuclear Materials Management & Safeguards System



Conclusions

- **Risk-Informed Programs**
- **Flexible/Predictable Response**
- **Assured Public Safety**



Contacting the NRC

Report an Emergency:

- (301) 816-5100 (collect)

Report a Safety Concern:

- (800) 695-7403 or
- Allegation@nrc.gov

- **General Information or questions:**

- www.nrc.gov

For additional information:

Regional Public Affairs Officer

- Victor Dricks
- Phone: (817) 860 - 8128

State Liaison Officer

- William (Bill) Maier
- Phone: (817) 860 - 8267

↗ Select "What we do" for Public Affairs