



UNITED STATES
NUCLEAR REGULATORY COMMISSION
REGION IV
611 RYAN PLAZA DRIVE, SUITE 400
ARLINGTON, TEXAS 76011-4005

April 20, 2004

Garry L. Randolph, Senior Vice
President and Chief Nuclear Officer
Union Electric Company
P.O. Box 620
Fulton, MO 65251

SUBJECT: SUMMARY OF ANNUAL PERFORMANCE ASSESSMENT
MEETING FOR CALLAWAY PLANT

Dear Mr. Randolph:

This refers to the meeting conducted in Jefferson City, Missouri, on April 7, 2004, to discuss the safety performance at Callaway Plant between January 1 and December 31, 2003.

Topics discussed during the meeting included the Reactor Oversight Process, the safety performance at Callaway Plant, and other industry and regulatory topics that may have been of interest to the local area residents. Members of the public present at the meeting were allowed to ask questions and comment on the proceedings.

In accordance with Section 2.390 of the NRC's "Rules of Practice," Part 2, Title 10, Code of Federal Regulations, a copy of this letter will be placed in the NRC's Public Document Room.

Should you have any questions concerning this matter, we will be pleased to discuss them with you.

Sincerely,

David N. Graves, Chief
Project Branch B
Division of Reactor Projects

Docket: 50-483
License: NPF-30

Enclosures:

1. Attendance List
2. NRC Presentation
3. Licensee Presentation

Union Electric Company

-2-

cc w/enclosures:
Professional Nuclear Consulting, Inc.
19041 Raines Drive
Derwood, MD 20855

John O'Neill, Esq.
Shaw, Pittman, Potts & Trowbridge
2300 N. Street, N.W.
Washington, DC 20037

Mark A. Reidmeyer, Regional
Regulatory Affairs Supervisor
Regulatory Affairs
AmerenUE
P.O. Box 620
Fulton, MO 65251

Manager - Electric Department
Missouri Public Service Commission
301 W. High
P.O. Box 360
Jefferson City, MO 65102

Ronald A. Kucera, Deputy Director
for Public Policy
Department of Natural Resources
P.O. Box 176
Jefferson City, MO 65102

Rick A. Muench, President and
Chief Executive Officer
Wolf Creek Nuclear Operating Corporation
P.O. Box 411
Burlington, KS 66839

Dan I. Bolef, President
Kay Drey, Representative
Board of Directors Coalition
for the Environment
6267 Delmar Boulevard
University City, MO 63130

Chris R. Younie, Manager
Quality Assurance
AmerenUE
P.O. Box 620
Fulton, MO 65251

Union Electric Company

-3-

Jerry Uhlmann, Director
State Emergency Management Agency
P.O. Box 116
Jefferson City, MO 65102-0116

Scott Clardy, Director
Section for Environmental Public Health
P.O. Box 570
Jefferson City, MO 65102-0570

Keith D. Young, Manager
Regulatory Affairs
AmerenUE
P.O. Box 620
Fulton, MO 65251

David E. Shafer
Superintendent, Licensing
Regulatory Affairs
AmerenUE
P.O. Box 66149, MC 470
St. Louis, MO 63166-6149

Certrec Corporation
4200 South Hulen, Suite 630
Fort Worth, TX 76109

Tim Diemler
Emergency Preparedness
Director
Callaway County/Fulton
P.O. Box 817
Fulton, MO 65251

Lee Fritz
Presiding Commissioner
Callaway County Courthouse
10 East 5th Street
Fulton, MO 65251

Robert Rankin
Eastern District Commissioner
Callaway County Courthouse
10 East 5th Street
Fulton, MO 65251

Union Electric Company

-4-

Rodney Garnett
Western District Commissioner
Callaway County Courthouse
10 East 5th Street
Fulton, MO 65251

The Honorable Robert Craghead
Mayor of Fulton
Fulton City Hall
P.O. Box 130
Fulton, MO 65251

William Johnson
Fulton City Administrator
Fulton City Hall
P.O. Box 130
Fulton, MO 65251

Steve Myers
Chief of Police
Fulton City Hall
P.O. Box 130
Fulton, MO 65251

Dennis Crane
Sheriff, Callaway County
P.O. Box 817
Fulton, MO 65251

The Honorable Tom Shackelford
Mayor of Mokane
P.O. Box 41
Mokane, MO 65059

Richard Hudson, Director
Emergency Management
Gasconade County Courthouse
P.O. Box 295
Hermann, MO 65041

Ron Jost
Presiding Commissioner
Gasconade County Courthouse
119 East First Street
Hermann, MO 65041

Union Electric Company

-5-

Max Aubuchon
Northern District Commissioner
Gasconade County Courthouse
119 East First Street
Hermann, MO 65041

Jerry Lairmore
Southern District Commissioner
Gasconade County Courthouse
119 East First Street
Hermann, MO 65041

Glenn Ebker
Sheriff, Gasconade County
Gasconade County Courthouse
119 East First Street
Hermann, MO 65041

Fay Owsley
Gasconade County Public
Administrator
Gasconade County Courthouse
119 East First Street
Hermann, MO 65041

The Honorable Samuel Birk
Mayor of Morrison
Route 1
Morrison, MO 65061

Bob Bishop
Emergency Management Director
Montgomery County Courthouse
211 East Third
Montgomery City, MO 63361

Charles Korman
Presiding Commissioner
Montgomery County Courthouse
211 East Third
Montgomery City, MO 63361

Rich Daniels
First District Commissioner
Montgomery County Courthouse
211 East Third
Montgomery City, MO 63361

Union Electric Company

-6-

John Noltensmeyer
Second District Commissioner
Montgomery County Courthouse
211 East Third
Montgomery City, MO 63361

Robert Davis
Sheriff, Montgomery County
Montgomery County Courthouse
211 East Third
Montgomery City, MO 63361

The Honorable Steve Wehrle
Mayor of Rhineland
P.O. Box 384
Rhineland, MO 65069

Bradley Strobe
Emergency Management
Director
Osage County Courthouse
P.O. Box 1011
Linn, MO 65051

Russell J. Scheulen
Presiding Commissioner
Osage County Courthouse
P.O. Box 826
Linn, MO 65051

Jerry G. Wolfe
First District Commissioner
Osage County Courthouse
P.O. Box 826
Linn, MO 65051

Daryl L. Luecke
Second District Commissioner
Osage County Courthouse
P.O. Box 826
Linn, MO 65051

Carl Fowler
Sheriff, Osage County
Osage County Courthouse
P.O. Box 826
Linn, MO 65051

Union Electric Company

-7-

The Honorable Vernon McKague
Mayor of Chamois
Star Route
Chamois, MO 65024

Federal Emergency Management Agency
Mr. Dick Hainje, Regional Director
Region VII
2323 Grand Blvd., Suite 900
Kansas City, MO 64108-2670

Electronic distribution by RIV:
Regional Administrator (**BSM1**)
DRP Director (**ATH**)
DRS Director (**DDC**)
Senior Resident Inspector (**MSP**)
Branch Chief, DRP/B (**DNG**)
Senior Project Engineer, DRP/B (**RAK1**)
Staff Chief, DRP/TSS (**PHH**)
RITS Coordinator (**KEG**)

ADAMS: Yes No Initials: ps
 Publicly Available Non-Publicly Available Sensitive Non-Sensitive

R:\ CWY\2004\CW4-7-04MS-EOC.wpd

RIV/C:DRP/B				
DNGraves;df				
<i>ps</i>				
4/25/04				

OFFICIAL RECORD COPY

T=Telephone

E=E-mail

F=Fax

ANNUAL ASSESSMENT MEETING ATTENDANCE

LICENSEE/FACILITY	Ameren UE/ Union Electric Company Callaway Plant
DATE/TIME	April 7, 2004 -- 7:00 pm
LOCATION	Capitol Plaza Hotel and Convention Center 415 West McCarty Street Jefferson City, MO
NAME (PLEASE PRINT)	ORGANIZATION
Dean Morgan	Zimmer Radio Group / 950 KWOS
KEITH HENKE	MO DEPT OF HEALTH & SENIOR SERVICES
EDUARDO S. GRAY	MO. STATE EMERGENCY MANAGEMENT AGENCY
Christine McCarty	KOMU TV8
Keith Young	Ameren UE
Dan Owen	New Tribune
Chase Lucas	KRCG-TV
David Skater	Ameren UE
RON AFFOLTER	AMEREN UE
Steve Petzel	Ameren UE
LEE FRITZ	PRESIDING COMMISSIONER CALLAWAY COUNTY
Timothy Diemler	EMD CALLAWAY COUNTY
Bob Rankin	EASTERN COMMISSIONER CALLAWAY CO

ANNUAL ASSESSMENT MEETING ATTENDANCE

LICENSEE/FACILITY	Ameren UE/ Union Electric Company Callaway Plant
DATE/TIME	April 7, 2004 -- 7:00 pm
LOCATION	Capitol Plaza Hotel and Convention Center 415 West McCarty Street Jefferson City, MO
NAME (PLEASE PRINT)	ORGANIZATION
Russell Scheulen	OSAGE COUNTY Commission
JERRY WOLFE	OSAGE COUNTY COMMISSION
Garry Randolph	Ameren
Kathy Carroll	Ameren
Mike Cleary	Ameren
Warren A. Witt	Ameren
DAVID GRAM	NRC-RIV
Mark Satorius	NRC-RIV
John Hannay	NRC-RIV
Michael Peck	NRC-RIV
MARK REIDMEYER	Ameren
STAN J. CRAWFORD	Ameren
Luke Graessle	Ameren UE

ANNUAL ASSESSMENT MEETING



**Nuclear Regulatory Commission
Region IV**

NRC Meeting Purpose

- **Meeting with Licensee**
- **Inform Public of Plant Performance**

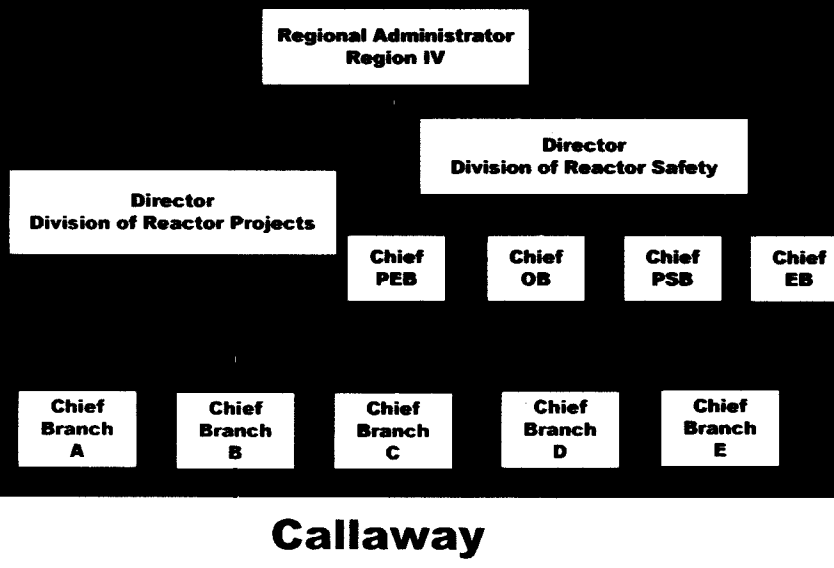


NRC Meeting Guidelines

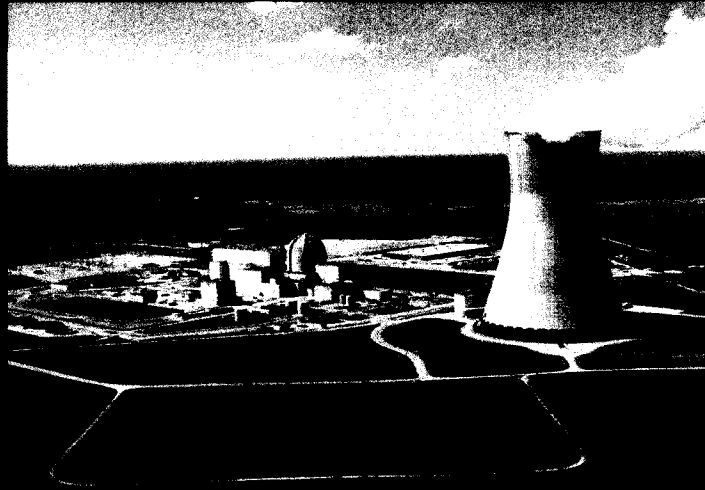
- Registration Table
- Feedback Forms
- Handouts
- Questions and Answers



Regional Organization



Callaway



Meeting Agenda

- **REGULATORY OVERSIGHT**
- **PLANT SAFETY PERFORMANCE SUMMARY**
- **ADDITIONAL FOCUS AREAS**
- **QUESTIONS AND ANSWERS**



NRC PERFORMANCE GOALS

- **Maintain public safety, protect the environment and promote common defense and security**
- **Enhance public confidence**
- **Improve:**
 - Effectiveness
 - Efficiency
 - Realism of processes and decision making
- **Reduce unnecessary regulatory burden**

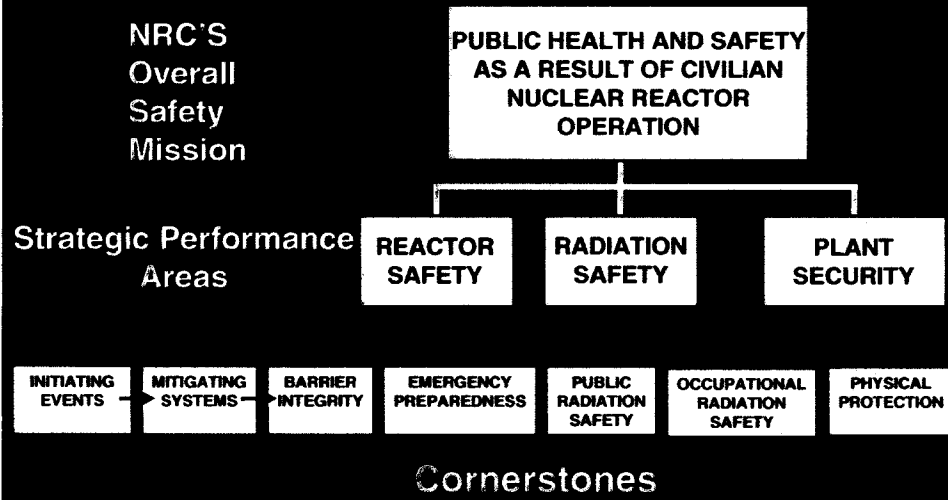


NRC Oversight Activities

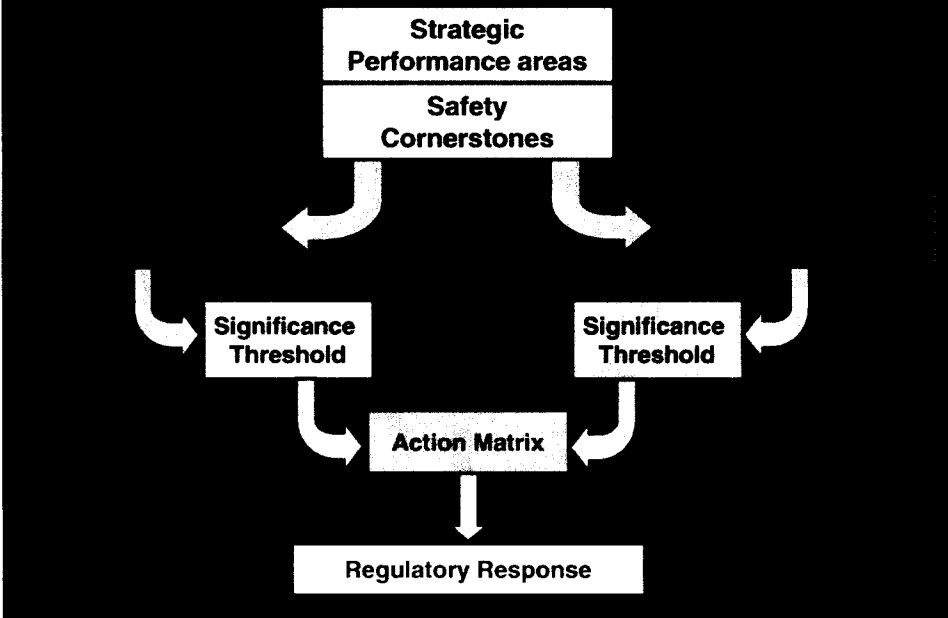
- **Provide assurance plants are:**
 - Operating safely
 - Complying with regulations
- **Based on a logical and sound framework**
- **Inspections focused on key safety areas**
- **Objective indicators of performance**
- **Assessment program triggers regulatory actions**



Reactor Oversight Process



Reactor Oversight Process



Baseline Inspection Program

- **Gathers objective evidence of plant safety**
- **Conducted at all plants**
- **Focuses on safety-significant:**
 - systems
 - components
 - activities
 - events



Baseline Inspection Program

- **Inspection reports describe significant findings and non-compliances**
- **Inspection reports are publicly accessible**

www.nrc.gov/reading-rm/adams/web-based.html



Event Follow-up and Supplemental Inspections

- Review events for significance
- Follow-up significant inspection findings
- Determine causes of performance declines
- Provide for graduated response



Reactor Oversight Process

SAFETY SIGNIFICANCE

- very low

WHITE

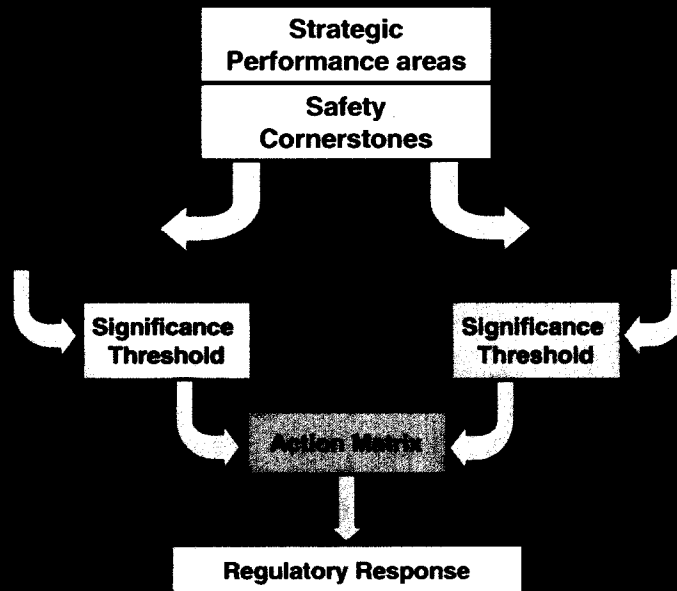
- low to moderate

YELLOW

- substantial

- high

Reactor Oversight Process



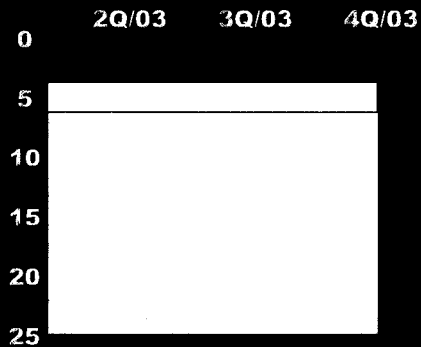
Performance Indicator Program

- Licensee monitors key safety parameters
- Data supplied to NRC quarterly
- Regulatory actions based on data



Performance Indicators

Unplanned Scrams per 7000 critical hours



Thresholds:

White >3.0,

Yellow >6.0,

>25.0

Unplanned scrams per 7000 critical hours	2Q/03	3Q/03	4Q/03
Actual scrams	0	0	0
Critical hours	2148	2208	2143
Indicator value	0.9	0.9	0.9

Performance Indicators

- Performance indicator results and other assessment information available on the NRC's public web site:

http://www.nrc.gov/NRR/OVERSIGHT/ASSESS/CALL/call_chart.html



Key Aspects of the Assessment Program

- Objective review of licensee performance
- “Action Matrix” to determine agency response in three areas:
 - Inspection
 - Management Involvement
 - Regulatory Actions
- Plant specific assessment letters
- Information on NRC public web site



Plant Safety Performance Summary



Inspection Results

One special inspection

One inspection finding of low to moderate safety significance (White)

One supplemental inspection

NRC and Licensee identified inspection findings of very low safety significance



Substantive Cross Cutting Issue

- **Multiple findings in different cornerstones**
- **First Identified Mid Cycle 2002**
- **Problem Identification and Resolution deficiencies**



Performance Indicator Results

All performance indicators
within the Licensee Control
Band (Green)



ROP Action Matrix Summary for 2003

	Licensee Response	Regulatory	Degraded Cornerstone	Multiple/ Repetitive Degraded Cornerstone	Unacceptable Performance
Nationwide	74	23	2	3	0
Region IV	17	3	0	1	0

National vs Regional Summary CY 2003

	Green			Red
National Performance Indicator Results (CY 2003)	1828	15	0	0
Regional Performance Indicator Results (CY 2003)	376	2	0	0
	Green			Red
National Total Inspection Findings (CY 2003)	760	16	2	3
Regional Total Inspection Findings (CY 2003)	177	2	0	0

Assessment Conclusion

Cornerstone objectives fully met

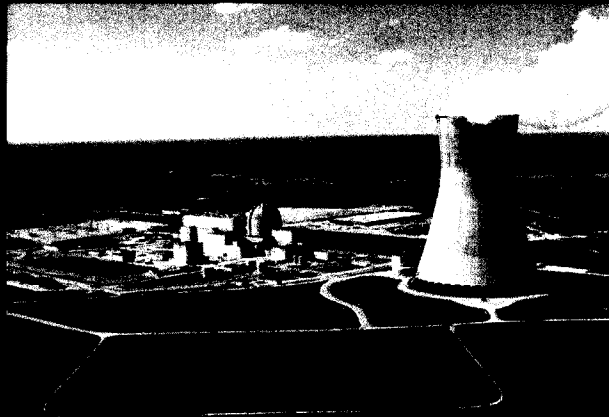
Licensee effectively managed:

- Reactor safety
- Radiation safety
- Plant security

**Callaway Plant operated in a manner
that preserved the health and safety
of the public**



LICENSEE RESPONSE



Additional Focus Areas

- **Security at Nuclear Power Plants**
- **Recent Industry Issues**



Security at Nuclear Power Plants

Nuclear Regulatory Commission:

- **Expanded involvement with FBI, law enforcement and other intelligence agencies**
- **Frequent communications with Office of Homeland Security, DOD, FAA, FEMA and other federal agencies**
- **Continue to work in concert with:**
 - **Licensees**
 - **State and local officials**



Security at Nuclear Power Plants

Threat Advisory and Protective Measures System:

- **communicates threats affecting NRC licensees**
- **corresponds to color-coded Homeland Security Presidential Directive**
- **Identifies specific actions to be taken by NRC licensees for each threat level**



Recent Industry Issues

Bulletin 2003-01: Potential Impact of Debris Blockage on Emergency Sump Recirculation at Pressurized Water Reactors

Bulletin 2003-02: Leakage from Reactor Pressure Vessel Lower Head Penetrations and Reactor Coolant Pressure Boundary Integrity

Bulletin 2003-04: Rebaseline Data in Nuclear Materials Management & Safeguards System



Conclusions

- **Risk-Informed Programs**
- **Flexible/Predictable Response**
- **Assured Public Safety**



Contacting the NRC

Report an Emergency:

- (301) 816-5100 (collect)

Report a Safety Concern:

(800) 695-7403 or

Allegation@nrc.gov

- **General Information or questions:**

- www.nrc.gov

For additional information:

Regional Public Affairs Officer


- **Victor Dricks**

Phone: (817) 860 - 8128

State Liaison Officer

- **William (Bill) Maier**

Phone: (817) 860 - 8267

 Select "What we do" for Public Affairs.



Cross-Cutting Issue Problem Identification & Resolution

NRC Public Meeting

April 7, 2004



Corrective Actions Taken

- Training provided
- Procedures and processes revised
- Performance indicators developed
- Management review boards implemented

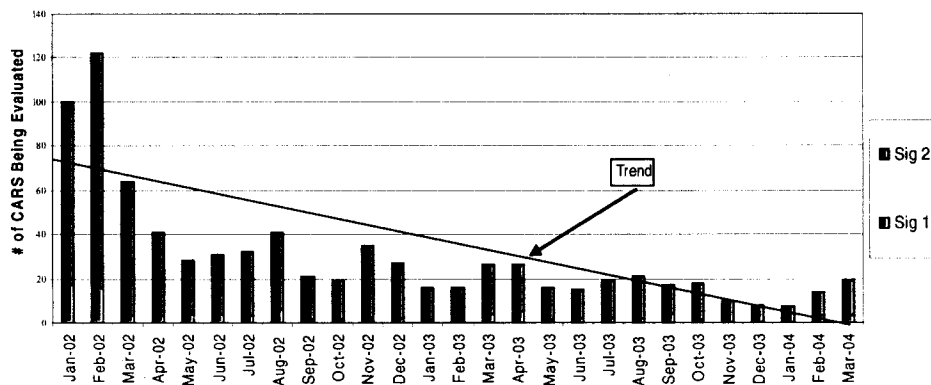


Results

- More line organization involvement
- Reduced completion time and improved quality
- Improved management oversight
- Backlog reduced

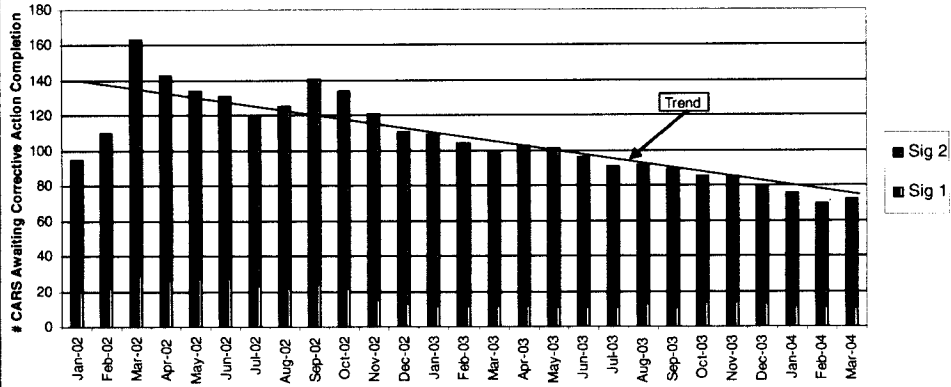


Sig 1 and 2 CARS in Evaluate



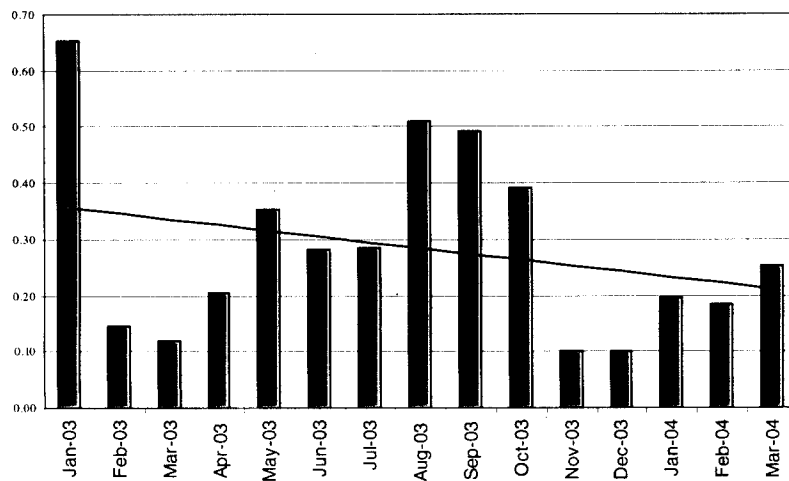


Sig 1 and 2 CARS in InProcess



Recurrence Rate

3 Month Rolling Average Percent Recurrence of Sig 1 and 2 CARS





Future Areas of Emphasis

- Immediate actions
- Timeliness and quality of cause analysis
- Corrective action development and implementation



Why will this Work?

- Actions to close Tone Alert Radio finding were effective
- Cause analysis quality improved
- Indicators show an improving trend
- Senior management engagement through review boards and oversight