

Pilgrim Annual Assessment Meeting

Reactor Oversight Program - CY 2003



Nuclear Regulatory Commission - Region I
King of Prussia, PA
March 24, 2004

Agenda

- Introduction
- Review of Reactor Oversight Process
- National Summary of Plant Performance
- Discussion of Plant Performance Results
- Licensee Response and Remarks
- NRC Closing Remarks
- Break
- NRC available to address public questions

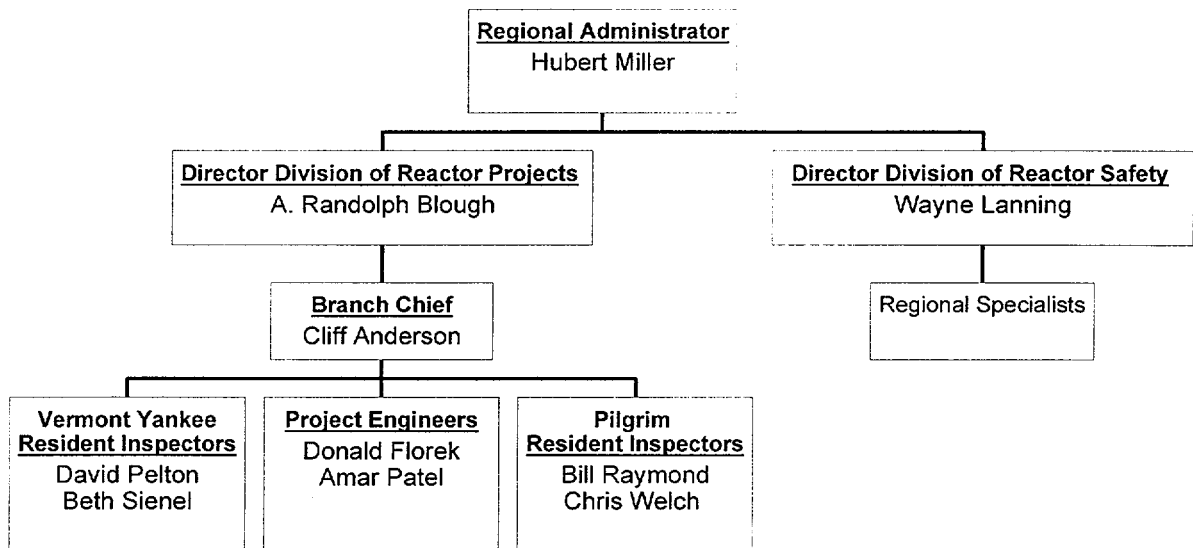
Purpose of Today's Meeting

- A public forum for discussion of the licensee's performance
- NRC will address the licensee performance issues identified in the annual assessment letter
- Licensee will respond to the information in the letter and inform the NRC of new or existing programs to maintain or improve their performance

NRC Representatives

- Cliff Anderson, Branch Chief
– (610) 337-5227
- Bill Raymond, Senior Resident Inspector
– (508) 747-0565
- Chris Welch, Resident Inspector
– (508) 747-0565

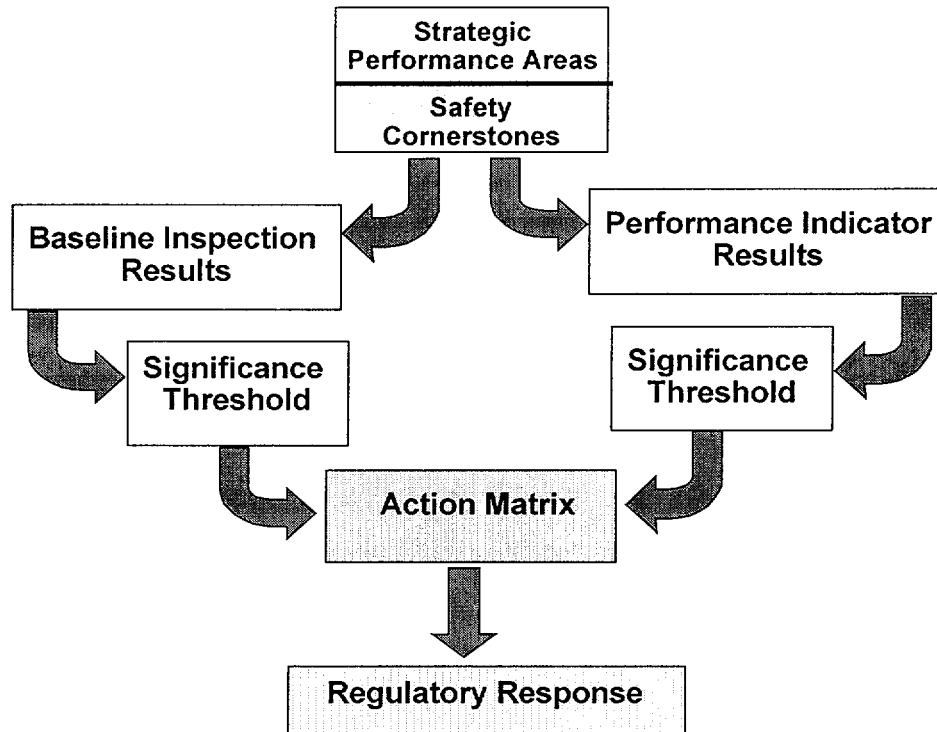
Region I Organization



NRC Performance Goals

- Maintain safety and protect the environment
- Enhance public confidence
- Improve effectiveness, efficiency, and realism of processes and decision making
- Reduce unnecessary regulatory burden

Reactor Oversight Process



Examples of Baseline Inspections

- Equipment Alignment ~92 hrs/yr
- Triennial Fire Protection ~200 hrs every 3 yrs
- Operator Response ~125 hrs/yr
- Emergency Preparedness ~80 hrs/yr
- Rad Release Controls ~100 hrs every 2 yrs
- Worker Radiation Protection ~100 hrs/yr
- Corrective Action Program ~250 hrs every 2 yrs
- Corrective Action Case Reviews ~60 hrs/yr

Significance Threshold

Performance Indicators

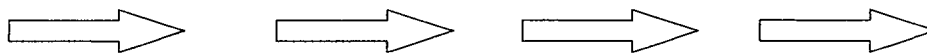
- Green:** Only Baseline Inspection
White: May increase NRC oversight
Yellow: Requires more NRC oversight
Red: Requires more NRC oversight

Inspection Findings

- Green:** Very Low safety issue
White: Low to moderate safety issue
Yellow: Substantial safety issue
Red: High safety issue

Action Matrix Concept

Licensee Response	Regulatory Response	Degraded Cornerstone	Multiple/Rep. Degraded Cornerstone	Unacceptable Performance
-------------------	---------------------	----------------------	------------------------------------	--------------------------



Increasing Safety Significance

Increasing NRC Inspection Efforts

Increasing NRC/Licensee Management Involvement

Increasing Regulatory Actions

National Summary of Plant Performance

Status at End of CY 2003

Licensee Response	75
Regulatory Response	22
Degraded Cornerstone	2
Multiple/Repetitive Degraded Cornerstone	3
Unacceptable	0
<hr/>	
Total Units	102*

*Davis-Besse is in IMC 0350 process

National Summary

- Performance Indicator Results (at end of CY 2003)

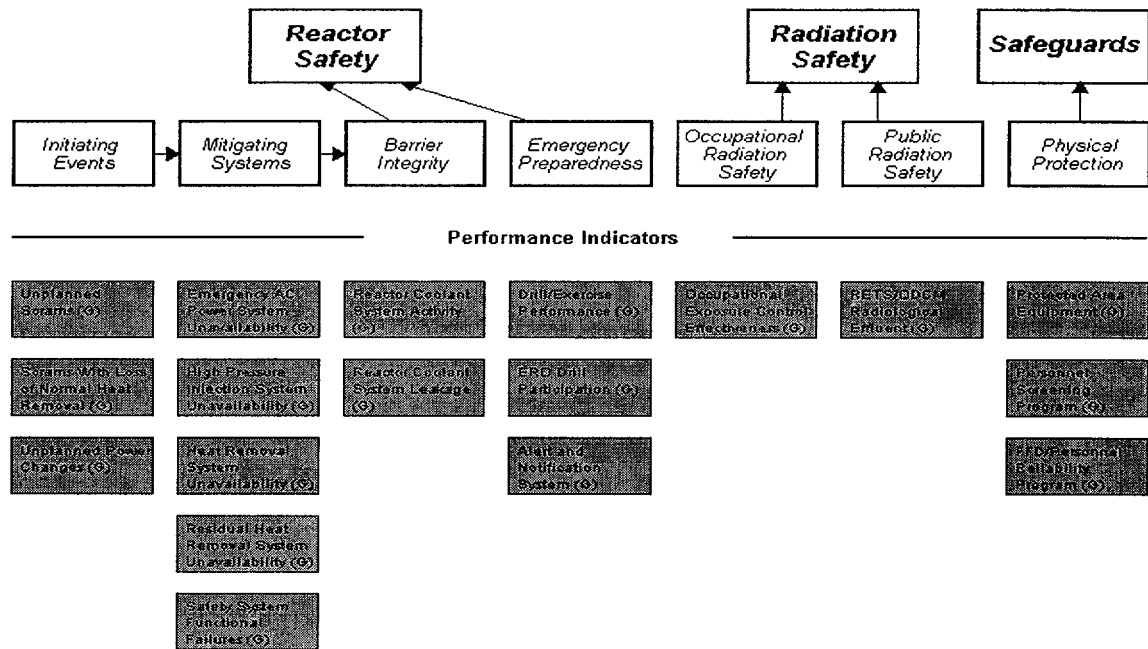
- ▶ **Green** 1825
- ▶ **White** 15
- ▶ **Yellow** 0
- ▶ **Red** 0

- Total Inspection Findings (CY 2003)

- ▶ **Green** 748
- ▶ **White** 19
- ▶ **Yellow** 2
- ▶ **Red** 4

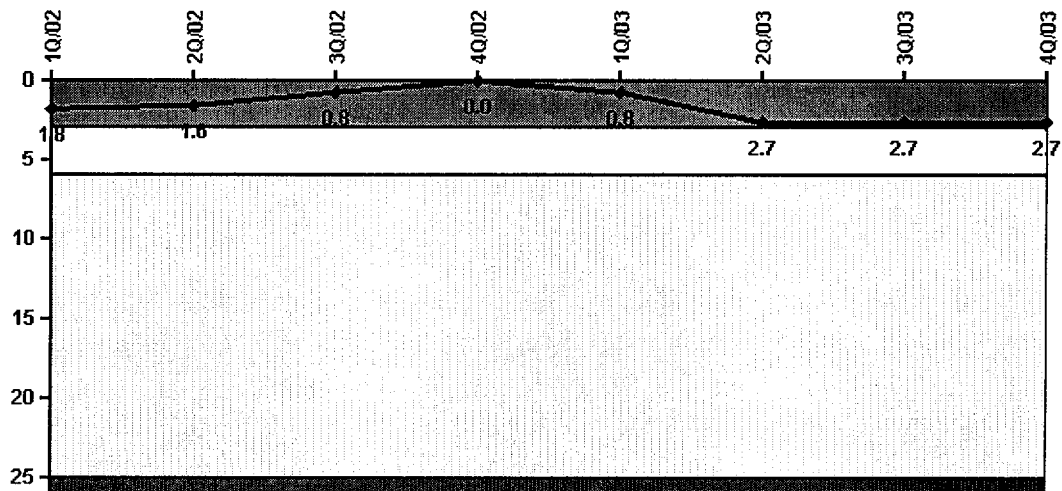
Pilgrim - Performance Indicators

www.nrc.gov/NRR/OVERSIGHT/ASSESS/ then click Pilgrim



Performance Indicator

Unplanned Scrams per 7000 Critical Hrs



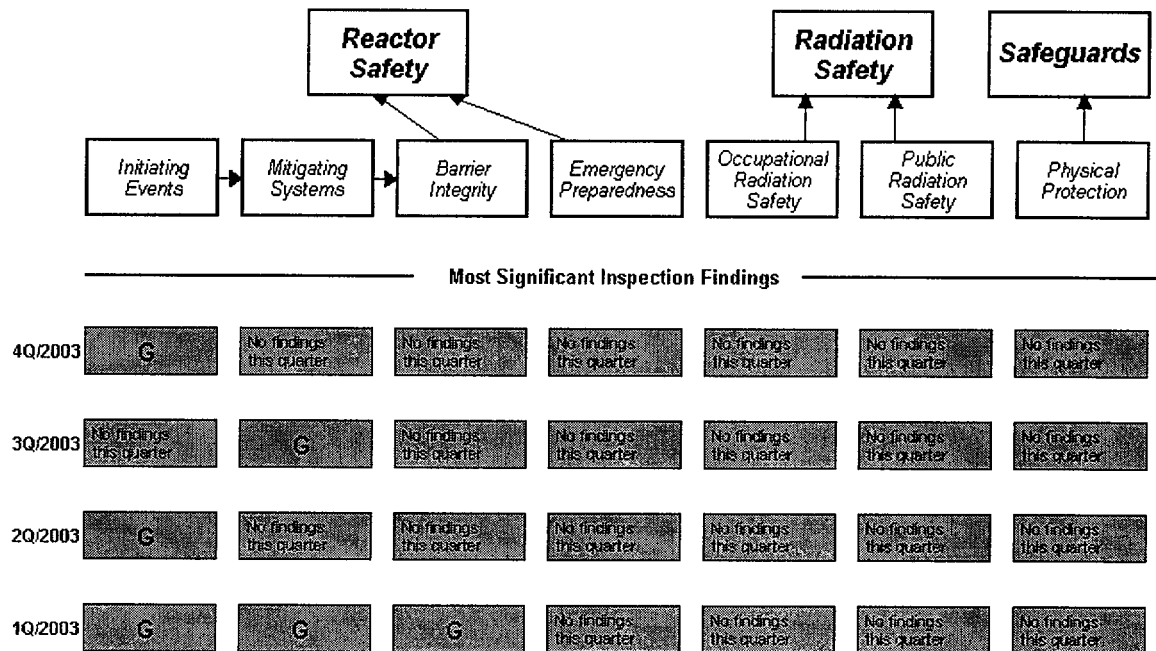
Thresholds: White > 3.0 Yellow > 6.0 Red > 25.0

Pilgrim Inspection Activities

(Jan 1 - Dec 31, 2003)

- 6030 hours of inspection related activities
- 2 resident inspectors assigned to the site
- 13 regional inspections
- 4 team inspections
- Inspection Findings
 - ▶ 7 findings of very low safety significance (**Green**)

Pilgrim - Inspection Results



Pilgrim Assessment Results

(Jan 1 - Dec 31, 2003)

- Operated safely
- Licensee Response column of the Action Matrix for all four quarters of 2003 (cornerstone objectives fully met)
- NRC will conduct baseline inspections during the next cycle

Pilgrim Inspection Activities

(Jan 1 - Dec 31, 2004)

- 8 regional inspector visits scheduled
- 2 team inspections scheduled

NRC Security Program Update

- NRC has issued Orders (February 2002):
 - ▶ Increased Patrols
 - ▶ Augmented Security Capabilities
 - ▶ Added Barriers and Posts
 - ▶ Enhanced Personnel Screening for Access
 - ▶ Enhanced Security Awareness
- Office of Nuclear Security and Incident Response Formed (April 2002)
- Established Threat Advisory and Protective Measure System (August 2002):

NRC Security Program Update (continued)

- Access Authorization Order (January 2003)
- Training Order (April 2003)
- Fatigue Order (April 2003)
- Design Basis Threat (April 2003)
- Changes to Site Security plans to incorporate the requirements of the orders (April 2004)
- Expanded Force-on-Force Exercises (in progress)
- New NRC Baseline Inspection Program initiated (February 2004)

Nuclear Industry Deregulation

- Economic Pressure of Competition
- Observed improvement - better plant management
- Potential pitfall - over-emphasis on production
- NRC activities
 - ▶ Performance Indicators
 - ▶ Corrective Action Program Inspections
 - ▶ Maintenance Inspections
 - ▶ Modification Inspections
 - ▶ Safety Conscious Work Environment Assessment

Reference Sources

- Reactor Oversight Process
 - ▶ <http://www.nrc.gov/NRR/OVERSIGHT/ASSESS/index.html>
- Public Electronic Reading Room
 - ▶ <http://www.nrc.gov/reading-rm.html>
- Public Document Room
 - ▶ 1-800-397-4209 (Toll Free)

Contacting the NRC

- Report an emergency
 - ▶ (301) 816-5100 (call collect)

- Report a safety concern:
 - ▶ (800) 695-7403
 - ▶ Allegation@nrc.gov

- General information or questions
 - ▶ www.nrc.gov
 - ▶ Select “What We Do” for Public Affairs

Licensee Response and Remarks

Pilgrim
Nuclear Power Plant
Entergy