

# Crystal River Nuclear Plant Annual Assessment Meeting

---

Reactor Oversight Program - CY 2003



Nuclear Regulatory Commission - Region II  
Crystal River, Florida  
April 13, 2004

# Purpose of Today's Meeting

---

- A public forum for discussion of the licensee's performance
- NRC will address the licensee performance issues identified in the annual assessment letter
- Licensee will be given the opportunity to respond to the information in the letter and inform the NRC of new or existing programs to maintain or improve their performance

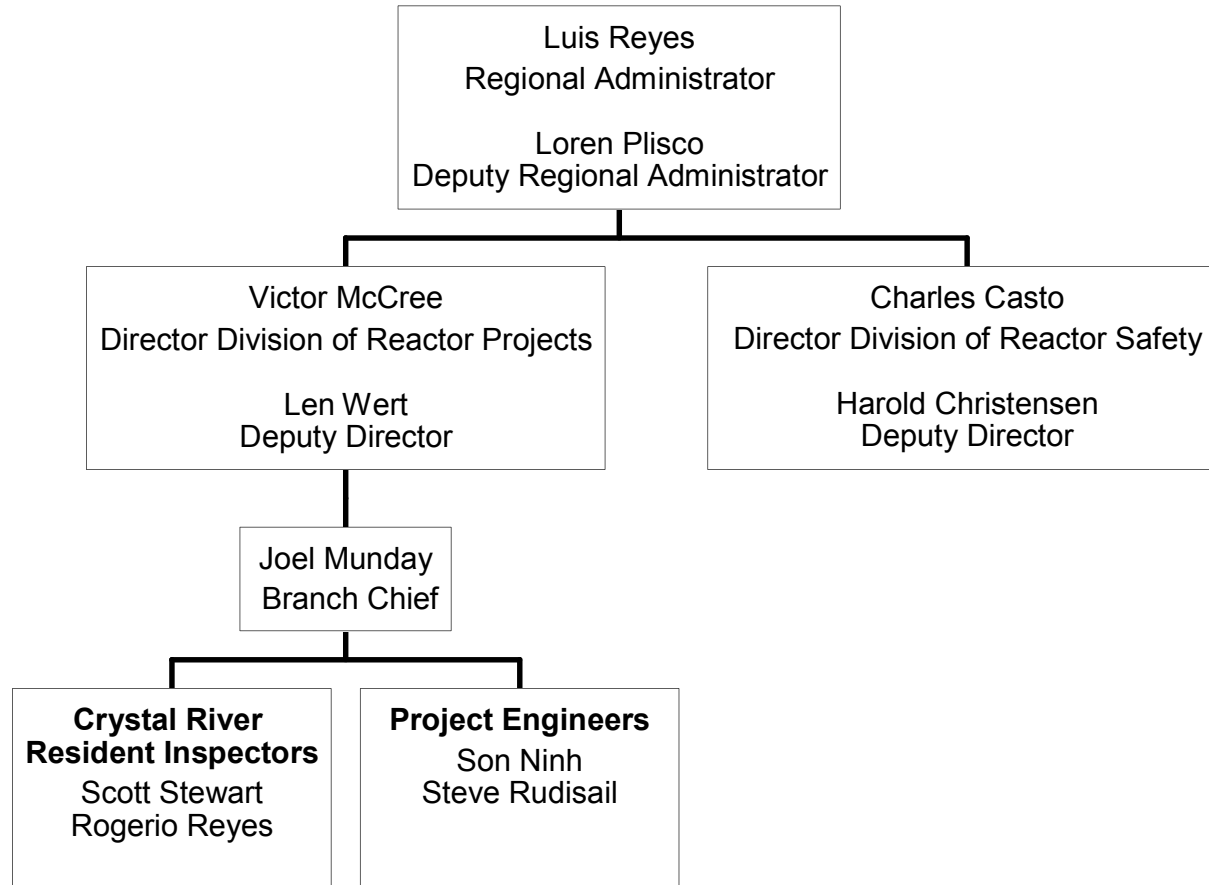
# Agenda

---

- Introduction
- Review of Reactor Oversight Process
- National Summary of Plant Performance
- Discussion of Plant Performance Results
- Licensee Response and Remarks
- NRC Closing Remarks
- Break
- NRC available to address public questions

# Region II Organization

---



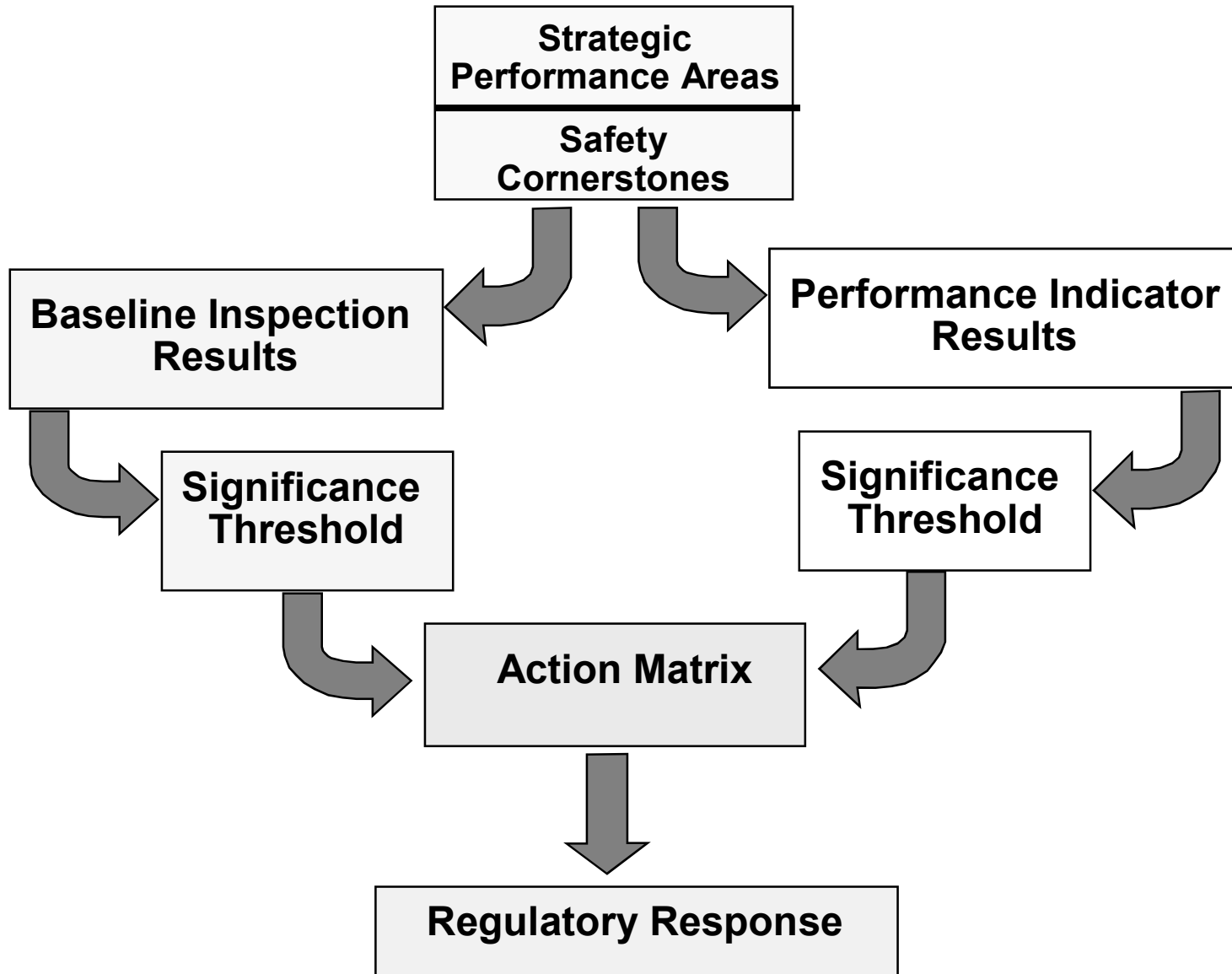
# NRC Performance Goals

---

- Maintain safety and protect the environment
- Enhance public confidence
- Improve effectiveness, efficiency, and realism of processes and decision making
- Reduce unnecessary regulatory burden

# Reactor Oversight Process

---



# Examples of Baseline Inspections

---

- Equipment Alignment ~92 hrs/yr
- Triennial Fire Protection ~200 hrs every 3 yrs
- Operator Response ~125 hrs/yr
- Emergency Preparedness ~80 hrs/yr
- Rad Release Controls ~100 hrs every 2 yrs
- Worker Radiation Protection ~100 hrs/yr
- Corrective Action Program ~200 hrs every 2 yrs
- Corrective Action Case Reviews ~60 hrs/yr

# Significance Threshold

---

## Performance Indicators

- Green:** Only Baseline Inspection
- White:** May increase NRC oversight
- Yellow:** Requires more NRC oversight
- Red:** Requires more NRC oversight

## Inspection Findings

- Green:** Very Low safety issue
- White:** Low to moderate safety issue
- Yellow:** Substantial safety issue
- Red:** High safety issue



# National Summary

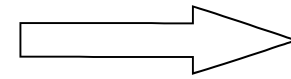
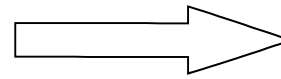
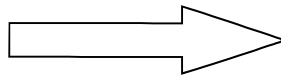
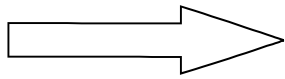
---

- Performance Indicator Results (at end of CY 2003)
  - ▶ **Green** 1825
  - ▶ **White** 15
  - ▶ **Yellow** 0
  - ▶ **Red** 0
  
- Total Inspection Findings (CY 2003)
  - ▶ **Green** 748
  - ▶ **White** 19
  - ▶ **Yellow** 2
  - ▶ **Red** 4

# Action Matrix Concept

---

|                          |                            |                             |   |                                 |
|--------------------------|----------------------------|-----------------------------|---|---------------------------------|
| <b>Licensee Response</b> | <b>Regulatory Response</b> | <b>Degraded Cornerstone</b> | <b>Multiple/Rep. Degraded Cornerstone</b> | <b>Unacceptable Performance</b> |
|--------------------------|----------------------------|-----------------------------|---|---------------------------------|



Increasing Safety Significance

Increasing NRC Inspection Efforts

Increasing NRC/Licensee Management Involvement

Increasing Regulatory Actions

# National Summary of Plant Performance

---

---

## Status at End of CY 2003

|  |      |
|--|------|
| Licensee Response                        | 75   |
| Regulatory Response                      | 22   |
| Degraded Cornerstone                     | 2    |
| Multiple/Repetitive Degraded Cornerstone | 3    |
| Unacceptable                             | 0    |
| Total Units                              | 102* |

\*Davis-Besse is in IMC 0350 process

# Crystal River Nuclear Plant Inspection Activities

---

(Jan 1 - Dec 31, 2003)

- 3500 hours of inspection related activities
- Engineering inspections
- Emergency preparedness inspection
- Initial exam inspection
- Fire protection followup inspection
- Radiation protection inspections
- Reactor head replacement inspection
- Reactor pressure vessel lower head inspection
- A refueling outage with reactor head replacement

# Crystal River Nuclear Plant Assessment Results

---

(Jan 1 - Dec 31, 2003)

- Plant performance was within the Licensee Response Column of the NRC's Action Matrix
- All inspection findings were classified as very low safety significance (Green)
- All PIs were Green

# Crystal River Nuclear Plant Annual Assessment Summary

---

January 1- December 31, 2003

- Progress Energy operated Crystal River Nuclear Plant in a manner that preserved public health and safety
- All cornerstone objectives were met
- NRC plans baseline inspections at Crystal River for the remainder of the assessment period

# Crystal River Nuclear Plant Inspection Activities

---

(Jan 1 - Dec 31, 2004)

- Reactor containment sump blockage inspection
- Spent fuel material control and accountability inspection
- Security inspection
- Emergency preparedness inspection
- Radiation protection inspection
- Licensed operator requalification program inspection
- PI&R inspection

# **Licensee Response and Remarks**

---

Dale Young  
Vice President, Crystal River Nuclear Plant  
Progress Energy



# Contacting the NRC

---

- Report an emergency
  - ▶ (301) 816-5100 (call collect)
- Report a safety concern:
  - ▶ (800) 695-7403
  - ▶ Allegation@nrc.gov
- General information or questions
  - ▶ [www.nrc.gov](http://www.nrc.gov)
  - ▶ Select “What We Do” for Public Affairs

# Reference Sources

---

- Reactor Oversight Process
  - ▶ <http://www.nrc.gov/NRR/OVERSIGHT/ASSESS/index.html>
- Public Electronic Reading Room
  - ▶ <http://www.nrc.gov/reading-rm.html>
- Public Document Room
  - ▶ 1-800-397-4209 (Toll Free)