

St. Lucie Nuclear Plant Annual Assessment Meeting

Reactor Oversight Program - CY 2003



Nuclear Regulatory Commission - Region II
Jensen Beach, Florida
March 22, 2004

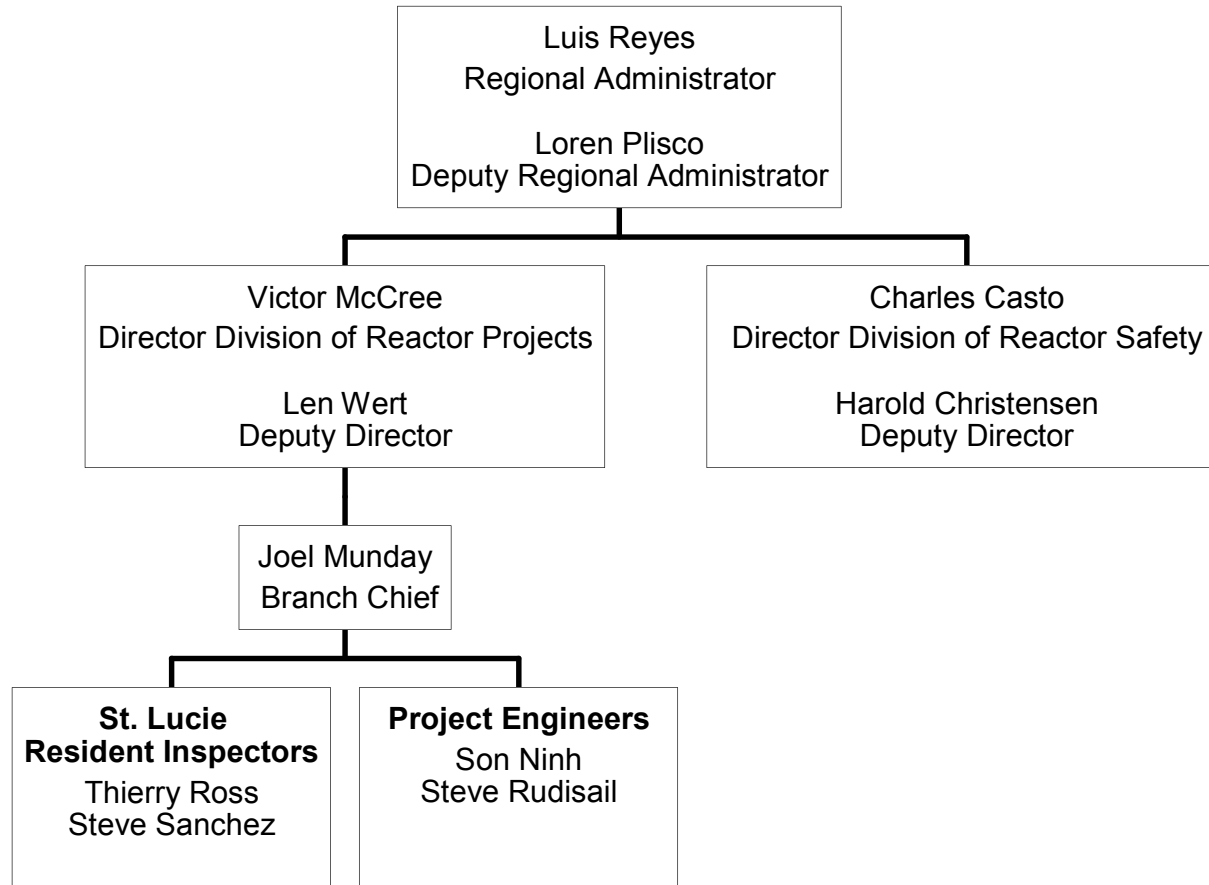
Purpose of Today's Meeting

- A public forum for discussion of the licensee's performance
- NRC will address the licensee performance issues identified in the annual assessment letter
- Licensee will be given the opportunity to respond to the information in the letter and inform the NRC of new or existing programs to maintain or improve their performance

Agenda

- Introduction
- Review of Reactor Oversight Process
- National Summary of Plant Performance
- Discussion of Plant Performance Results
- Licensee Response and Remarks
- NRC Closing Remarks
- Break
- NRC available to address public questions

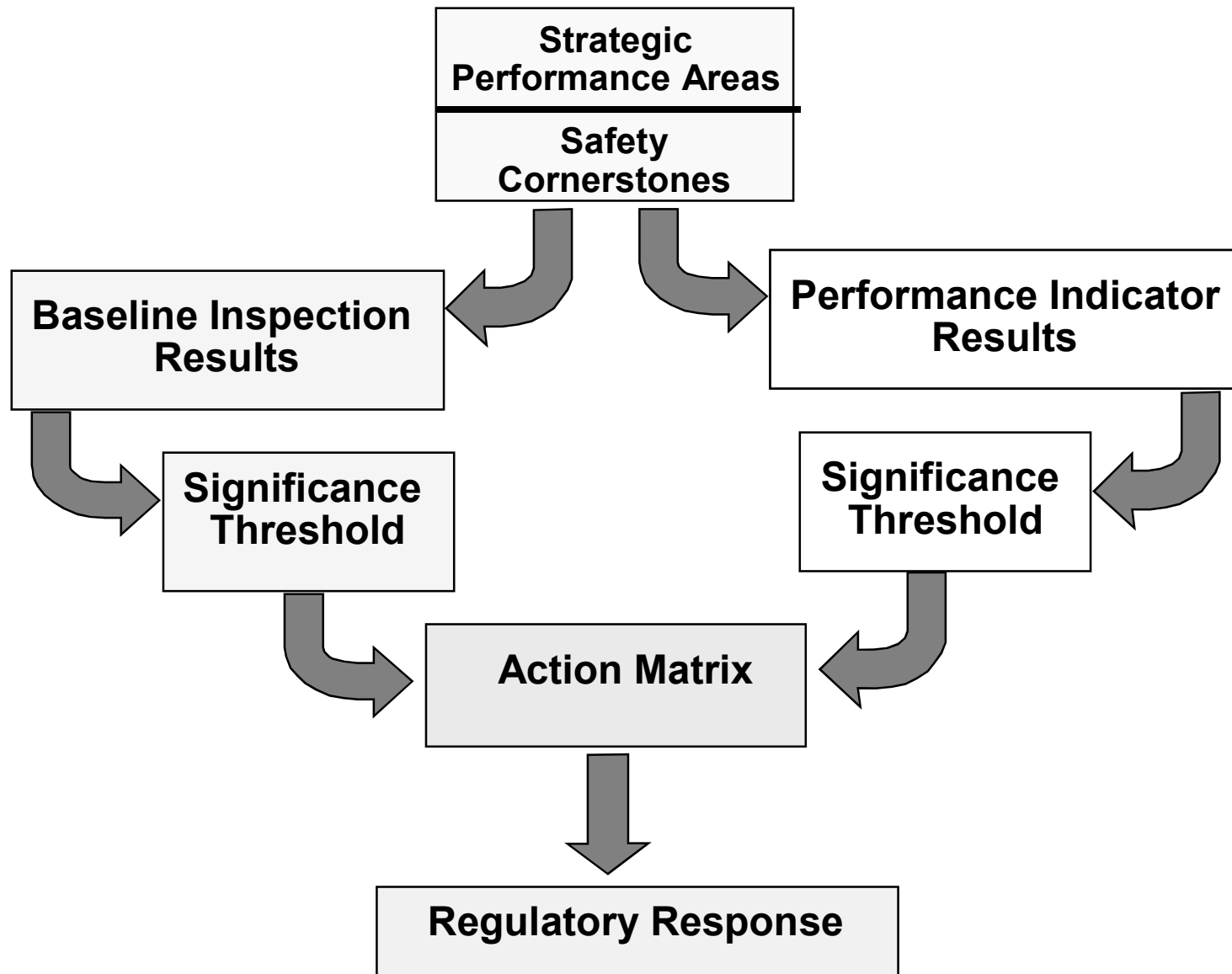
Region II Organization



NRC Performance Goals

- Maintain safety and protect the environment
- Enhance public confidence
- Improve effectiveness, efficiency, and realism of processes and decision making
- Reduce unnecessary regulatory burden

Reactor Oversight Process



Examples of Baseline Inspections

- Equipment Alignment ~92 hrs/yr
- Triennial Fire Protection ~200 hrs every 3 yrs
- Operator Response ~125 hrs/yr
- Emergency Preparedness ~80 hrs/yr
- Rad Release Controls ~100 hrs every 2 yrs
- Worker Radiation Protection ~100 hrs/yr
- Corrective Action Program ~200 hrs every 2 yrs
- Corrective Action Case Reviews ~60 hrs/yr

Significance Threshold

Performance Indicators

- Green:** Only Baseline Inspection
- White:** May increase NRC oversight
- Yellow:** Requires more NRC oversight
- Red:** Requires more NRC oversight

Inspection Findings

- Green:** Very Low safety issue
- White:** Low to moderate safety issue
- Yellow:** Substantial safety issue
- Red:** High safety issue

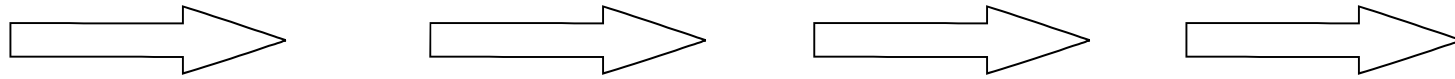
National Summary

- Performance Indicator Results (at end of CY 2003)
 - ▶ **Green** 1825
 - ▶ **White** 15
 - ▶ **Yellow** 0
 - ▶ **Red** 0

- Total Inspection Findings (CY 2003)
 - ▶ **Green** 748
 - ▶ **White** 19
 - ▶ **Yellow** 2
 - ▶ **Red** 4

Action Matrix Concept

Licensee Response	Regulatory Response	Degraded Cornerstone	Multiple/Rep. Degraded Cornerstone	Unacceptable Performance
--------------------------	----------------------------	-----------------------------	---	---------------------------------



Increasing Safety Significance

Increasing NRC Inspection Efforts

Increasing NRC/Licensee Management Involvement

Increasing Regulatory Actions

National Summary of Plant Performance

Status at End of CY 2003

Licensee Response	75
Regulatory Response	22
Degraded Cornerstone	2
Multiple/Repetitive Degraded Cornerstone	3
Unacceptable	0

Total Units 102*

*Davis-Besse is in IMC 0350 process

St. Lucie Nuclear Plant Inspection Activities

(Jan 1 - Dec 31, 2003)

- 4844 hours of inspection related activities
- Engineering inspections
- Emergency preparedness inspection
- Licensed operator exam inspection
- Triennial fire protection inspection
- Fire protection followup inspection
- Radiation protection inspections
- Reactor pressure vessel head and head penetration nozzles inspection
- Unit 2 refueling outage

St. Lucie Nuclear Plant Assessment Results

(Jan 1 - Dec 31, 2003)

- Plant performance was in the Licensee Response Column of the NRC's Action Matrix for the first three quarters but transitioned into the Regulatory Response Column in the fourth quarter
- All inspection findings were classified as very low safety significance (Green)
- All PIs were Green with one exception - The Unplanned Scrams per 7000 Critical Hours PI crossed the White threshold due to a reactor trip that occurred in the fourth quarter

St. Lucie Nuclear Plant Annual Assessment Summary

January 1- December 31, 2003

- Florida Power and Light Company operated St. Lucie Nuclear Plant in a manner that preserved public health and safety
- All cornerstone objectives were met
- NRC plans baseline inspections at St. Lucie Nuclear Plant for the remainder of the assessment period

St. Lucie Nuclear Plant Inspection Activities

(Jan 1 - Dec 31, 2004)

- Supplemental Inspection 95001
- Engineering inspections
- Security inspections
- Reactor pressure vessel head and head penetration nozzle inspections
- Reactor containment sump blockage inspection
- Spent fuel material control and accountability inspection
- Emergency preparedness inspection
- Fire protection inspection
- PI&R inspection
- Radiation protection inspection
- Licensed operator exam inspection
- Units 1 and 2 refueling outages

Licensee Response and Remarks

William Jefferson
Vice President, St. Lucie Nuclear Plant
Florida Power and Light Company

Contacting the NRC

- Report an emergency
 - ▶ (301) 816-5100 (call collect)
- Report a safety concern:
 - ▶ (800) 695-7403
 - ▶ Allegation@nrc.gov
- General information or questions
 - ▶ www.nrc.gov
 - ▶ Select “What We Do” for Public Affairs

Reference Sources

- Reactor Oversight Process
 - ▶ <http://www.nrc.gov/NRR/OVERSIGHT/ASSESS/index.html>
- Public Electronic Reading Room
 - ▶ <http://www.nrc.gov/reading-rm.html>
- Public Document Room
 - ▶ 1-800-397-4209 (Toll Free)