

SCALE: 1"=1600'
 C:\PROJECTS\
 2004-06\c-QAL03
 DATE: 03/16/04

HOMESTAKE-MILL-AND-ADJACENT-PROPERTIES
 GRANTS-NM-TOWNSHIP-11&12-N-RANGE-10-W

FIGURE 4.3-36. CHLORIDE CONCENTRATIONS
 OF THE ALLUVIAL AQUIFER, 2003, mg/l

661

4.3-57

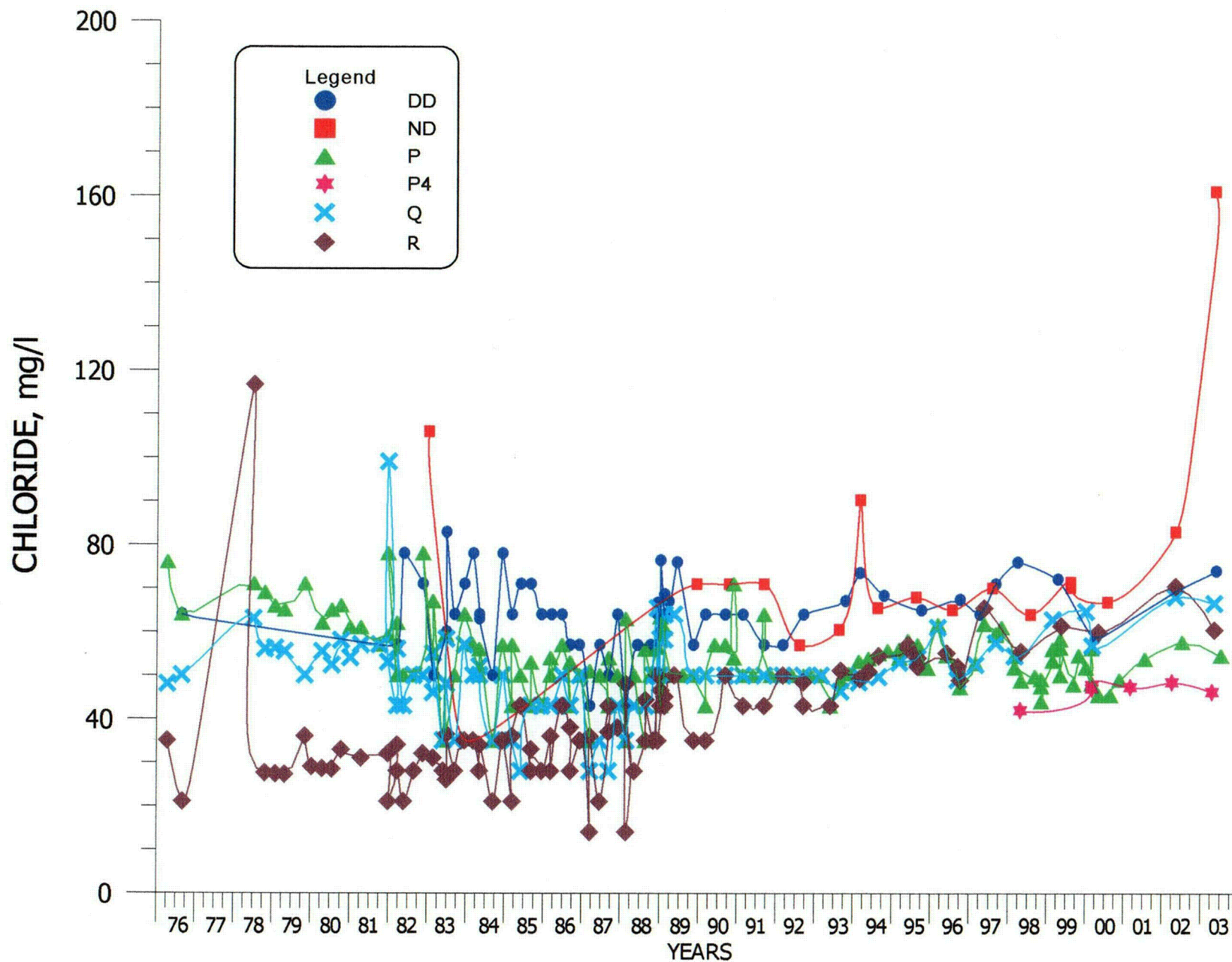


FIGURE 4.3-37. CHLORIDE CONCENTRATIONS FOR WELLS DD, ND, P, P4, Q AND R.

4.3-58

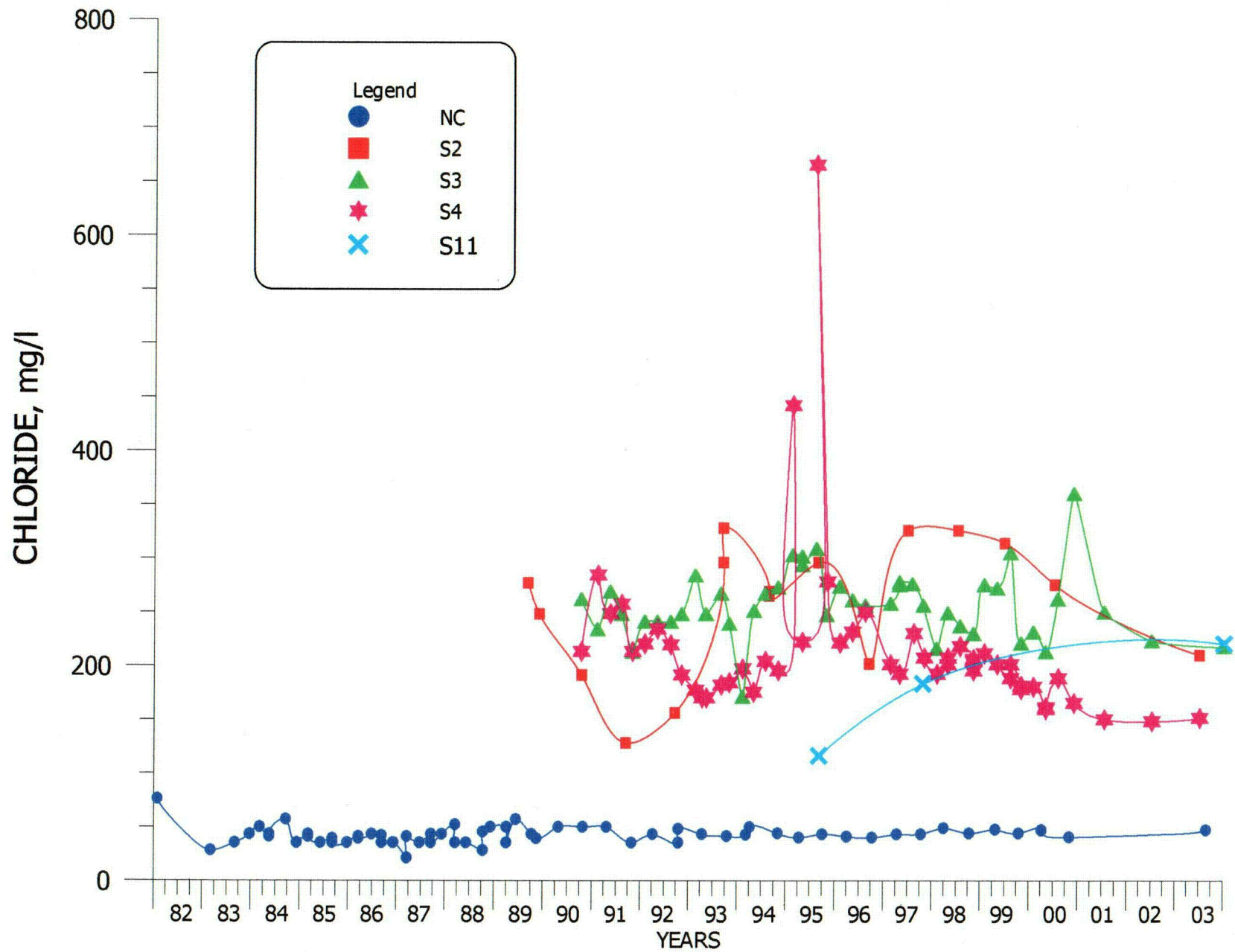


FIGURE 4.3-38. CHLORIDE CONCENTRATIONS FOR WELLS NC, S2, S3, S4 AND S11.

4.3-59

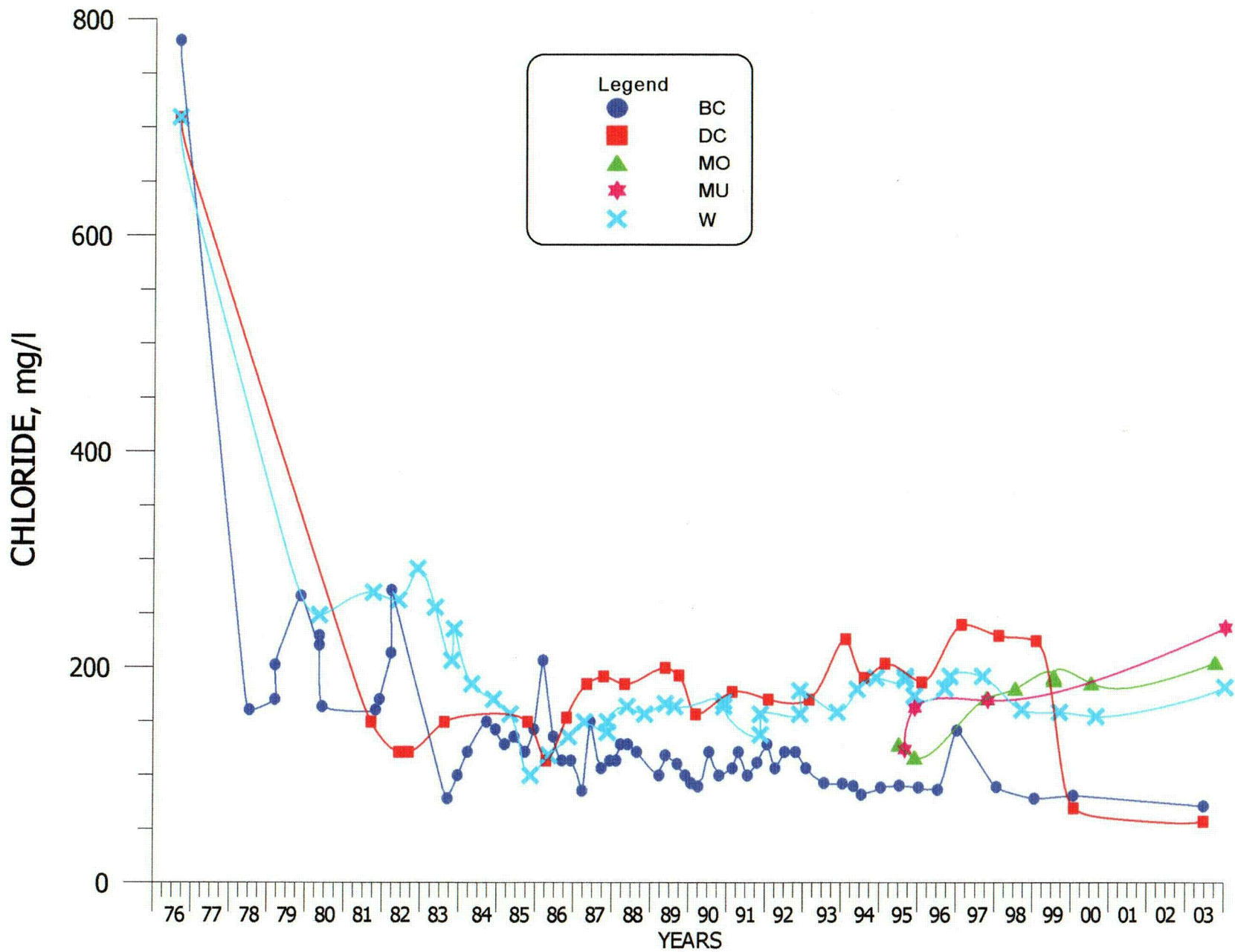


FIGURE 4.3-39. CHLORIDE CONCENTRATIONS FOR WELLS BC, DC, MO, MU AND W.

4.3-60

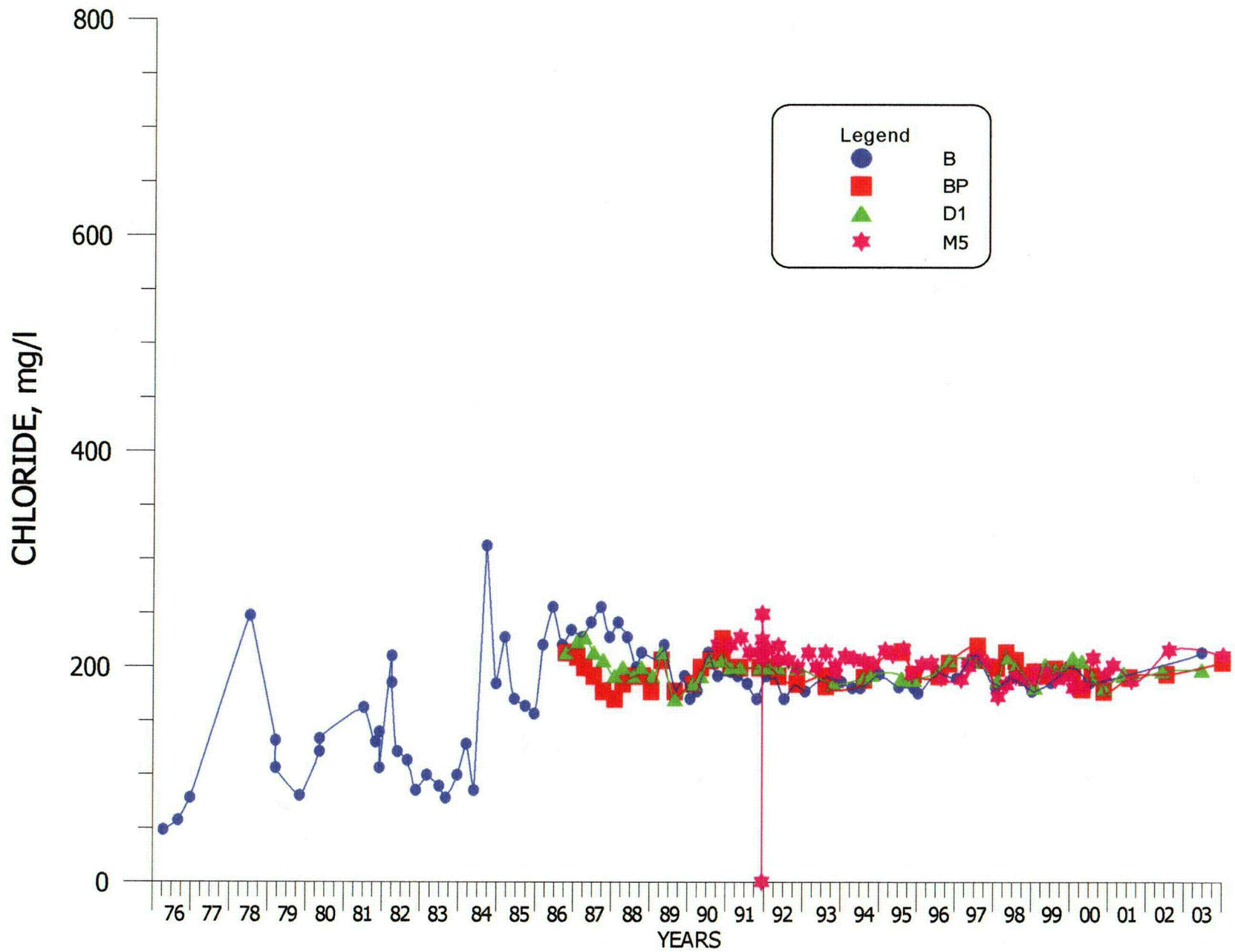


FIGURE 4.3-40. CHLORIDE CONCENTRATIONS FOR WELLS B, BP, D1 AND M5.

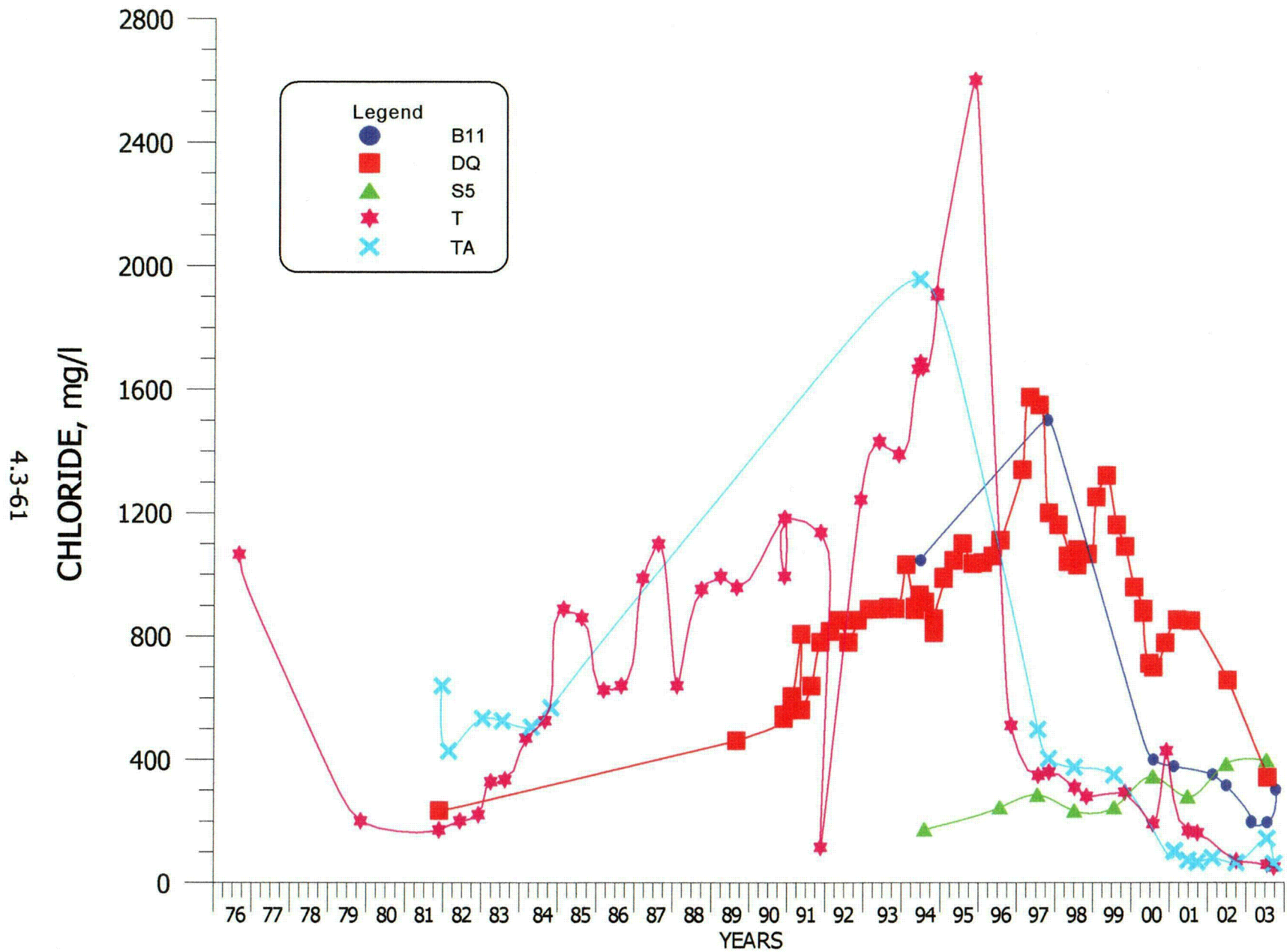


FIGURE 4.3-41. CHLORIDE CONCENTRATIONS FOR WELLS B11, DQ, S5, T AND TA.

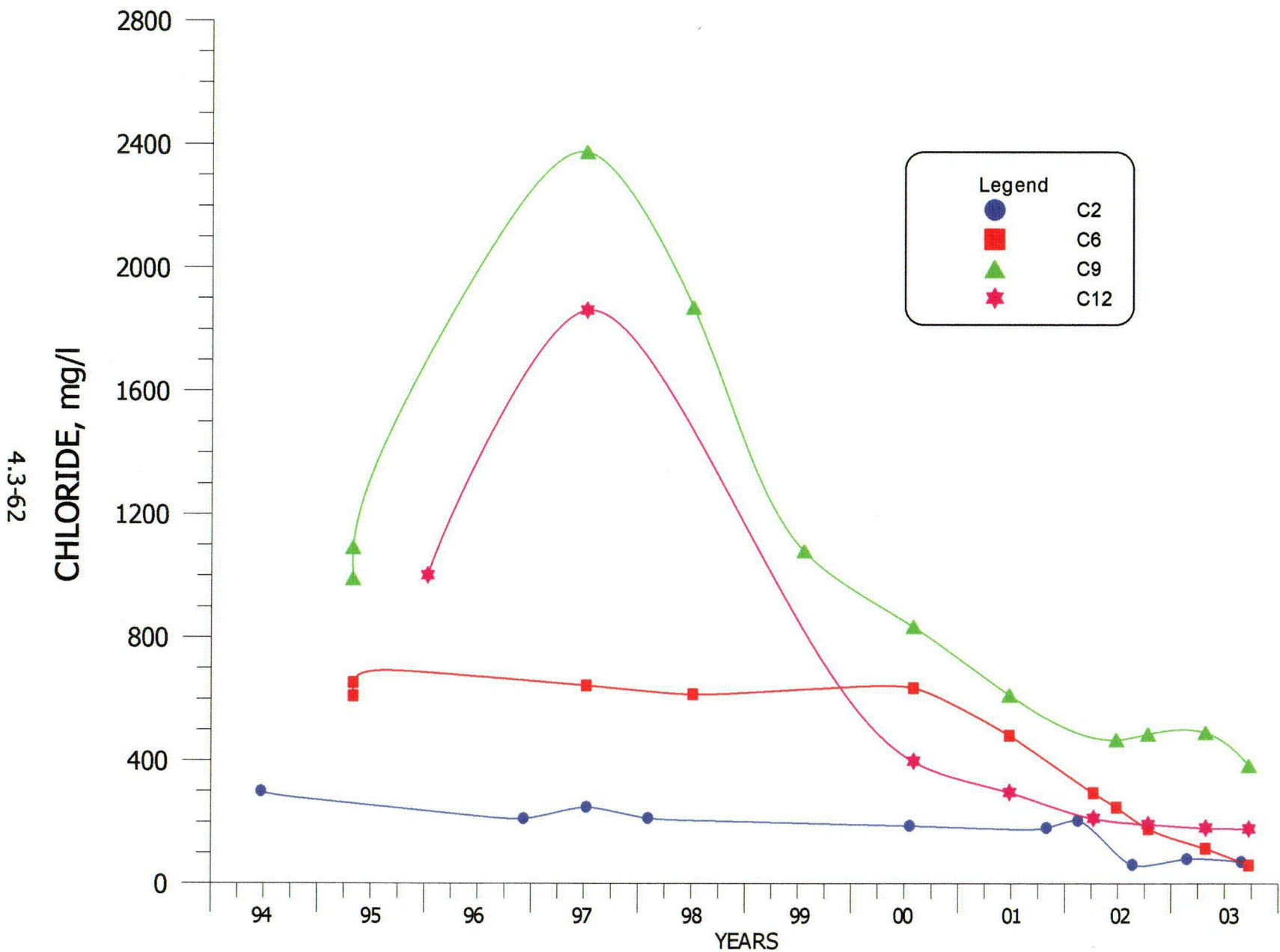


FIGURE 4.3-42. CHLORIDE CONCENTRATIONS FOR WELLS C2, C6, C9 AND C12.

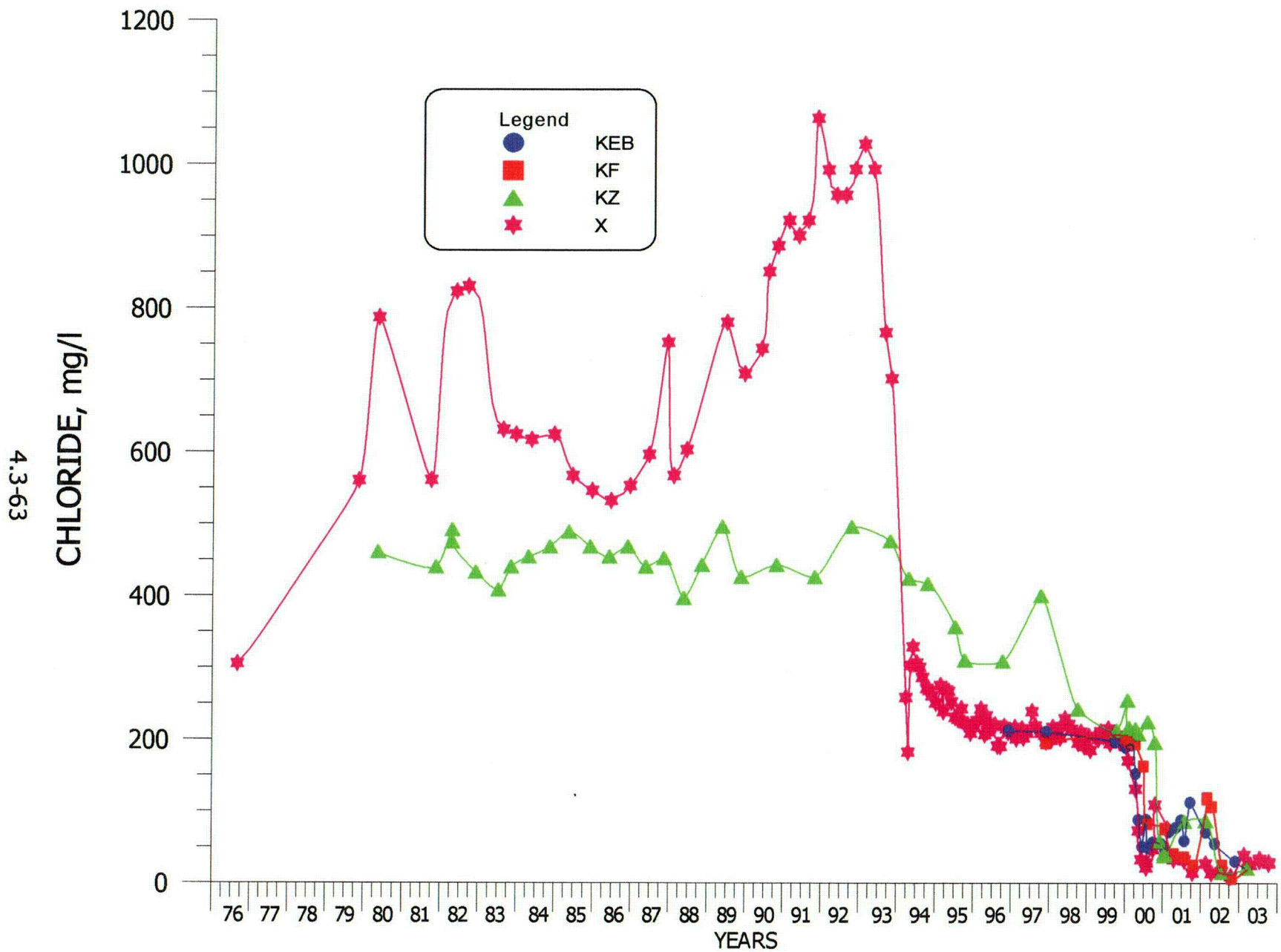


FIGURE 4.3-43. CHLORIDE CONCENTRATIONS FOR WELLS KEB, KF, KZ AND X.

4.3-64

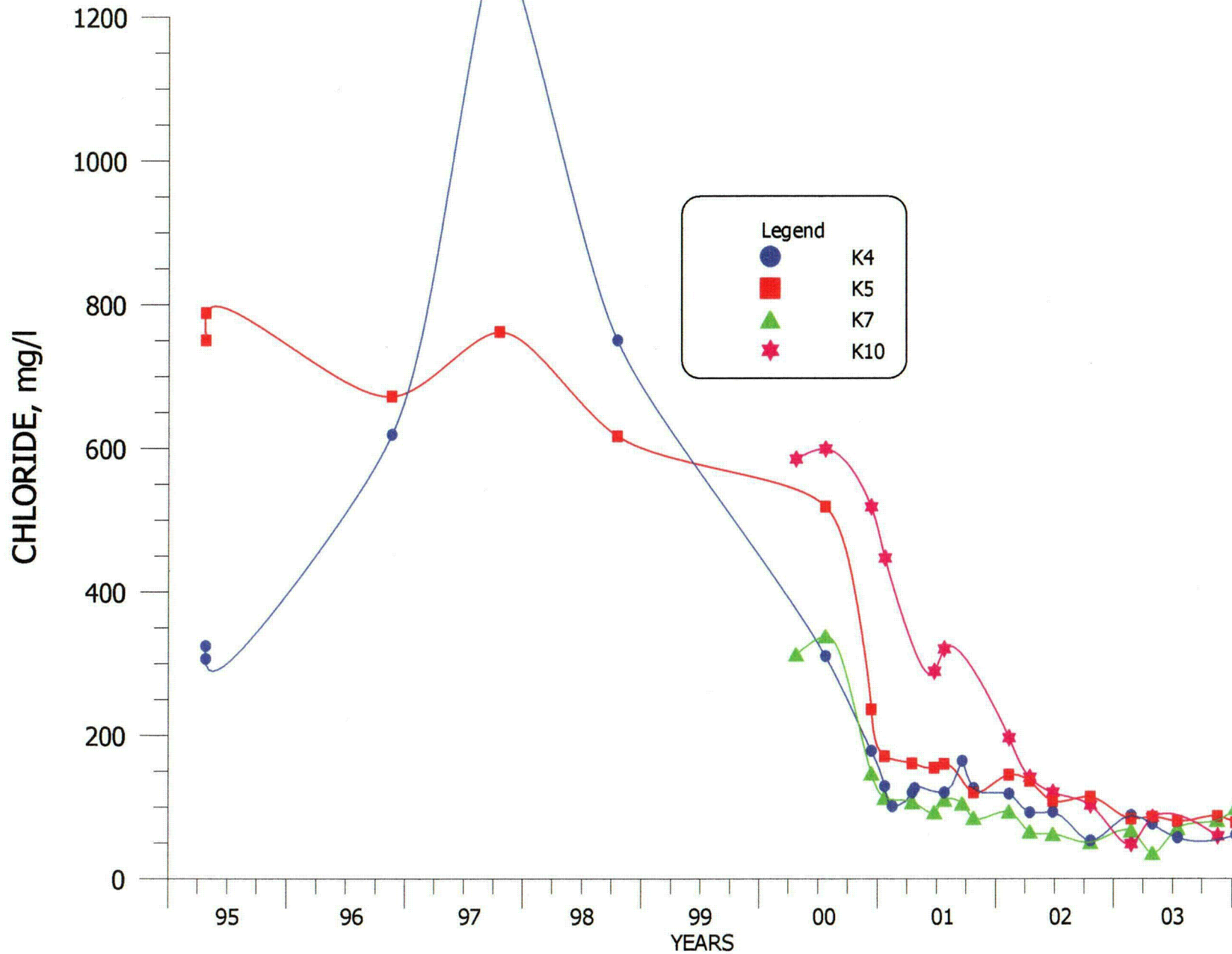


FIGURE 4.3-44. CHLORIDE CONCENTRATIONS FOR WELLS K4, K5, K7 AND K10.

4.3-65

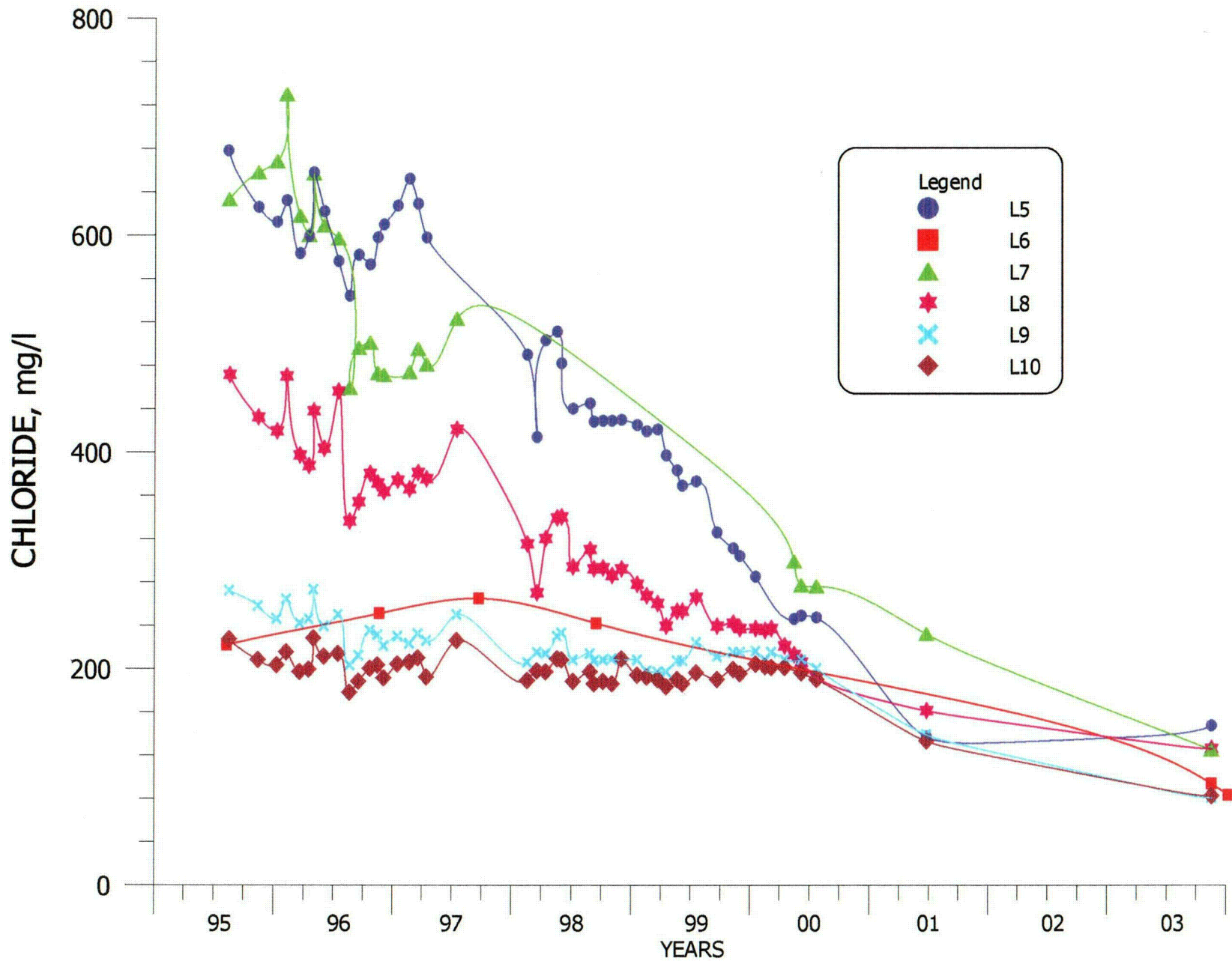


FIGURE 4.3-45. CHLORIDE CONCENTRATIONS FOR WELLS L5, L6, L7, L8, L9 AND L10.

4.3-66

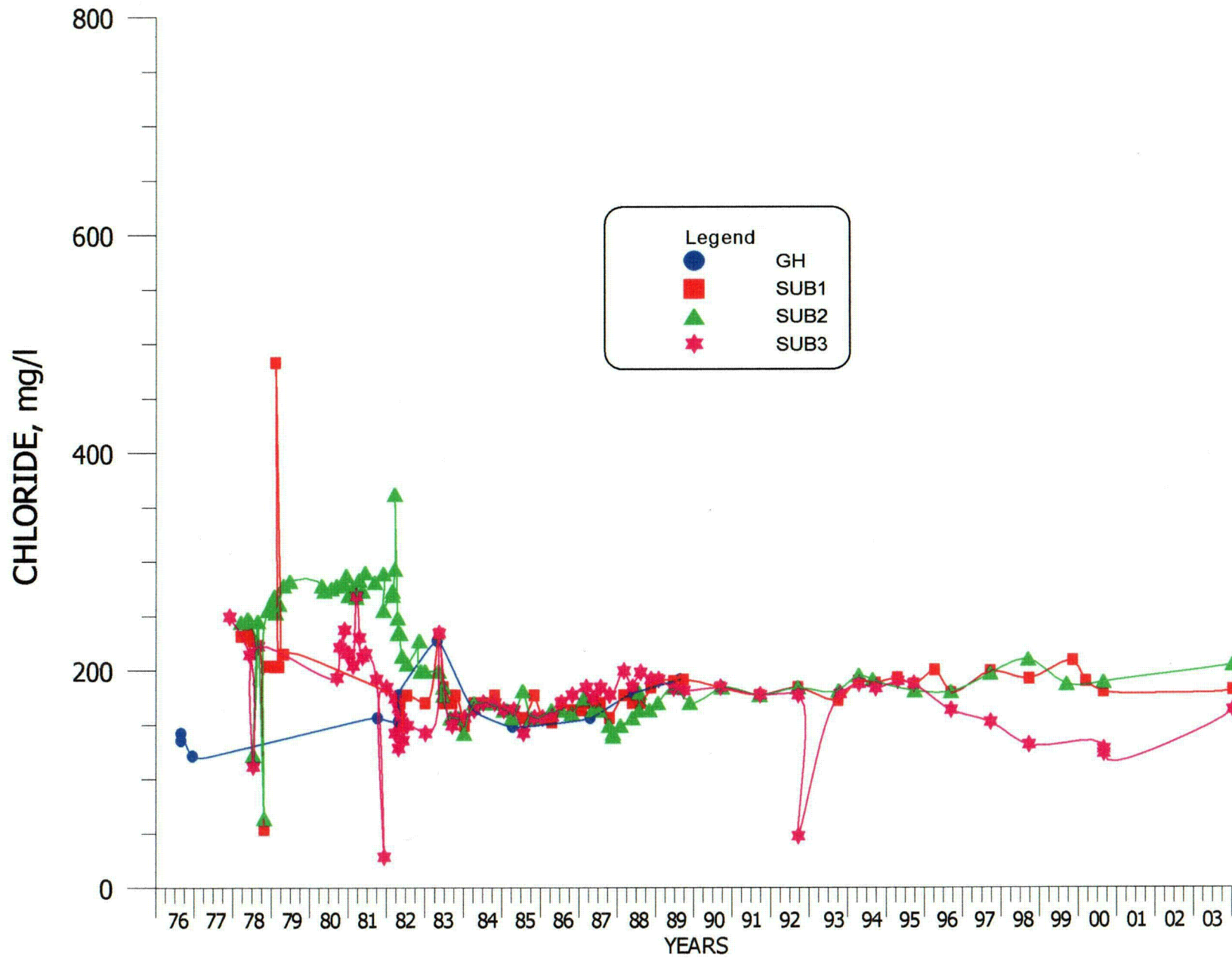


FIGURE 4.3-46. CHLORIDE CONCENTRATIONS FOR WELLS GH, SUB1, SUB2 AND SUB3.

4.3-67

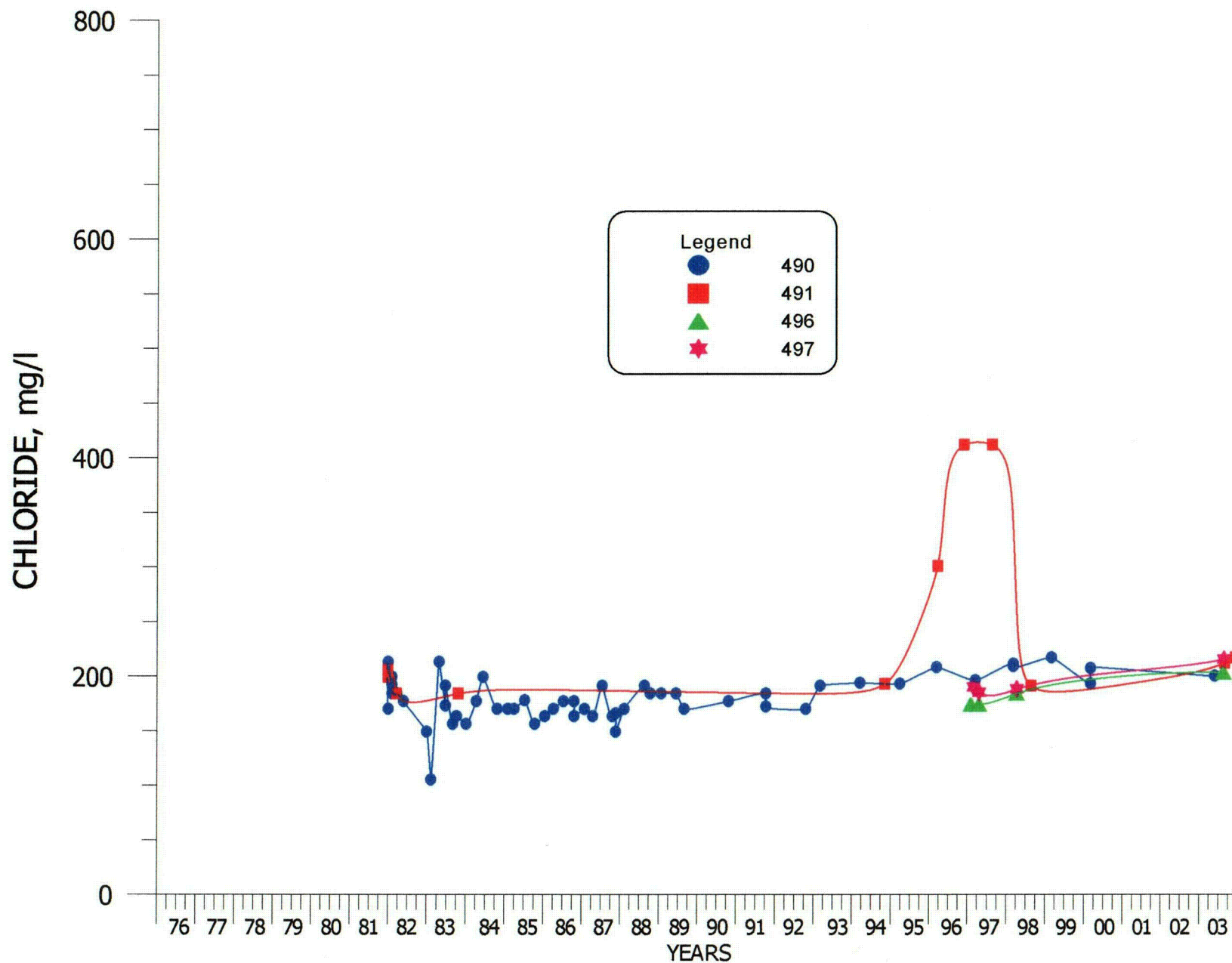


FIGURE 4.3-47. CHLORIDE CONCENTRATIONS FOR WELLS 490, 491, 496 AND 497.

4.3-68

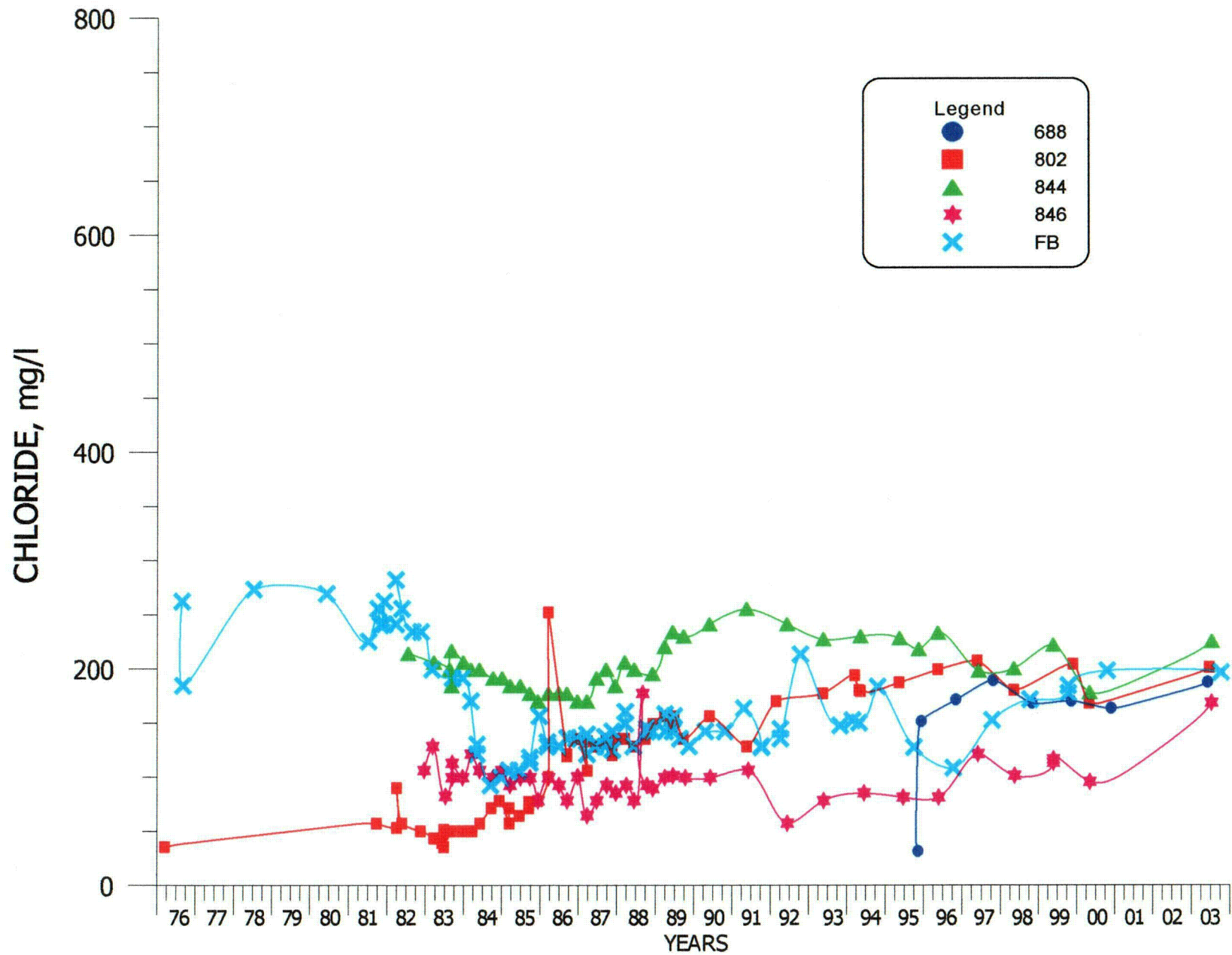


FIGURE 4.3-48. CHLORIDE CONCENTRATIONS FOR WELLS 688, 802, 844, 846 AND FB.

4.3-69

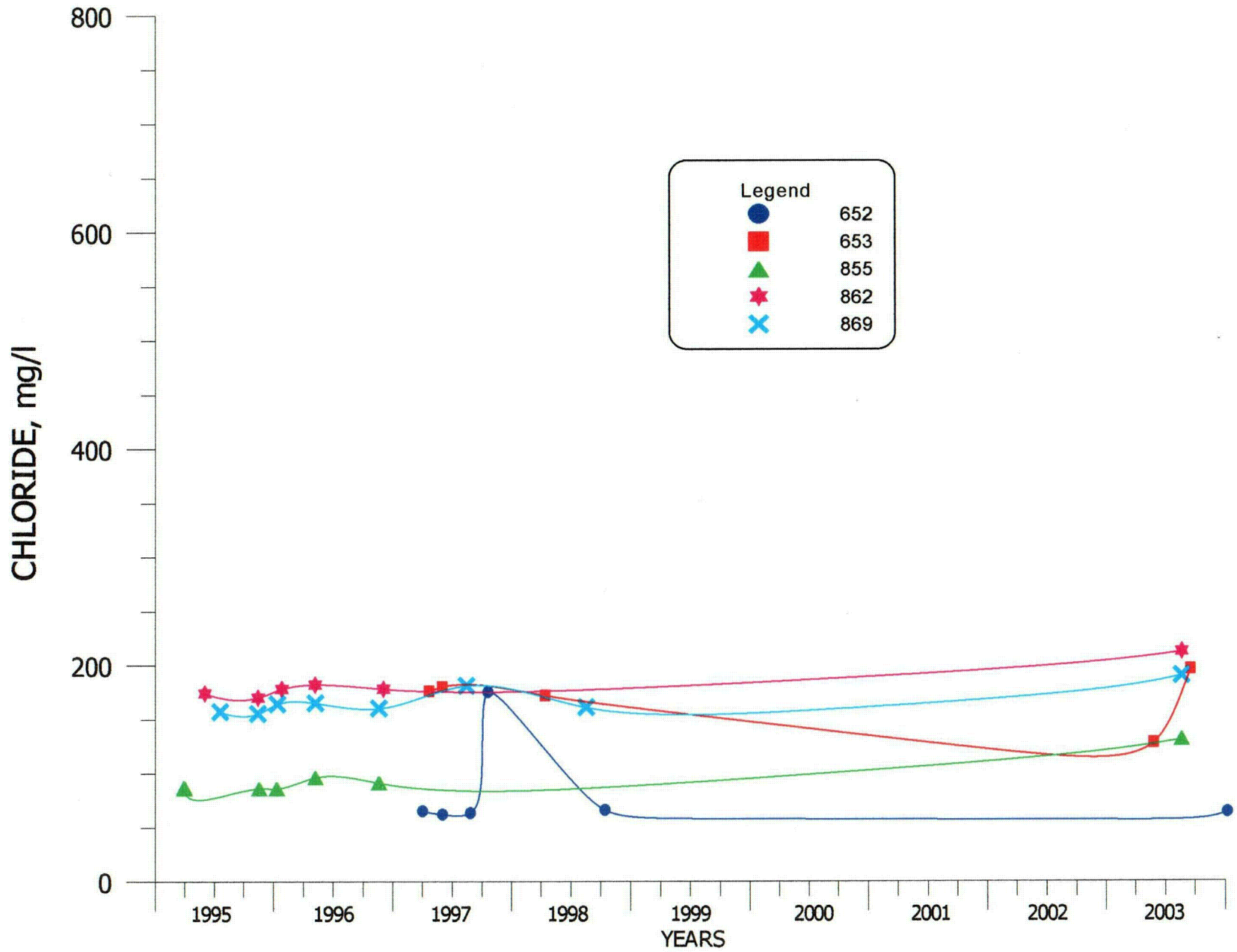


FIGURE 4.3-49. CHLORIDE CONCENTRATIONS FOR WELLS 652, 653, 855, 862 AND 869.

4.3-70

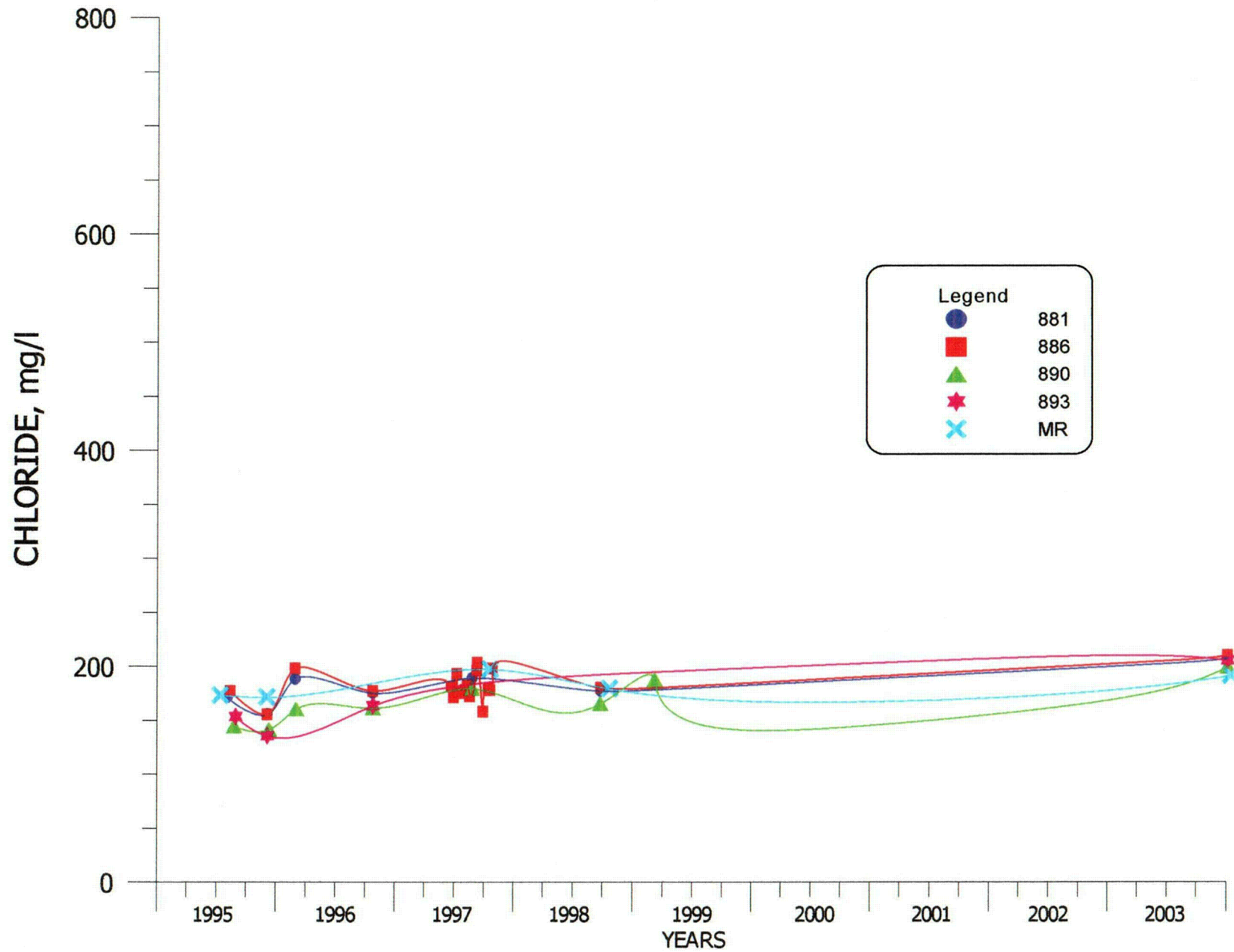


FIGURE 4.3-50. CHLORIDE CONCENTRATIONS FOR WELLS 881, 886, 890, 893 AND MR.

4.3-71

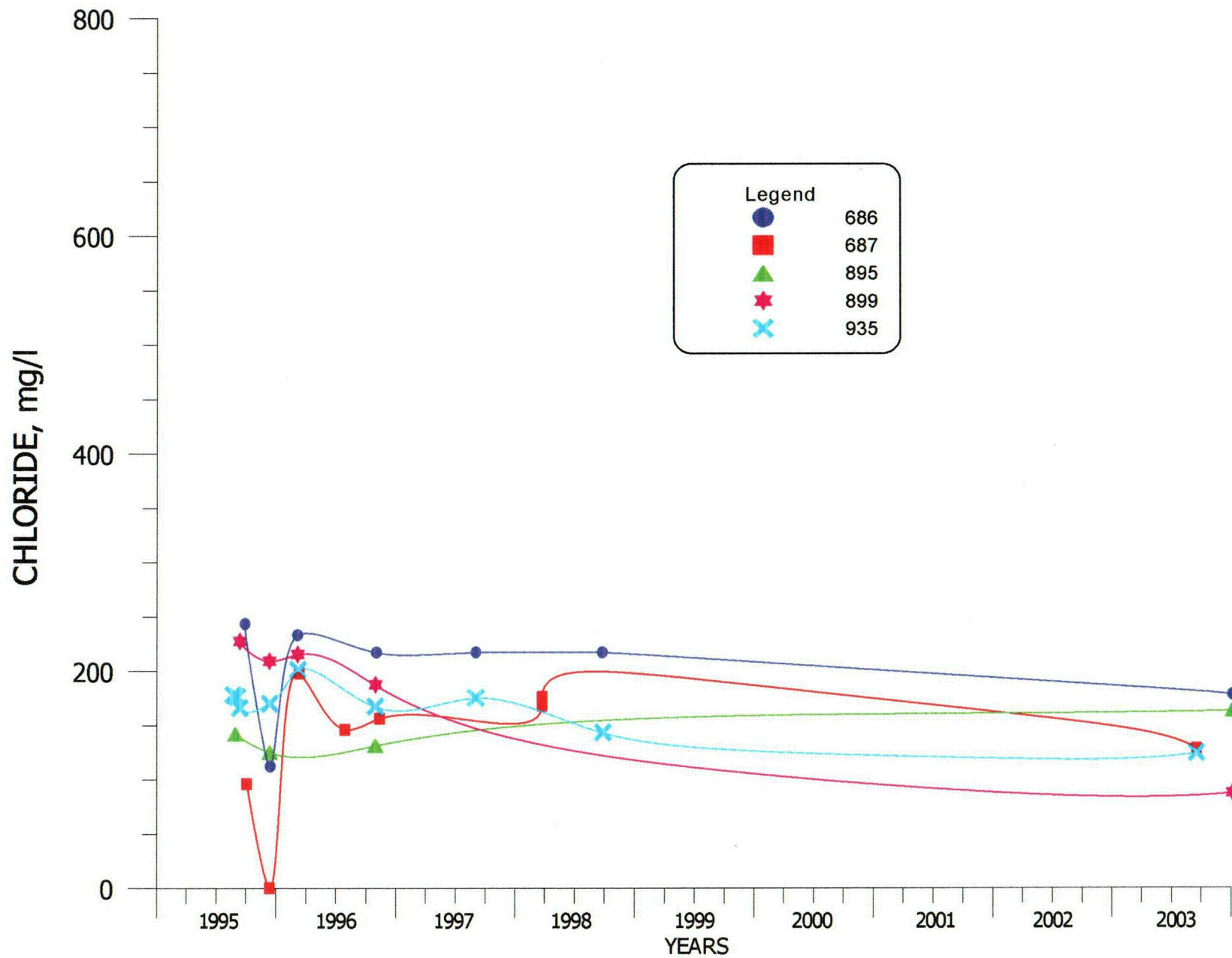


FIGURE 4.3-51. CHLORIDE CONCENTRATIONS FOR WELLS 686, 687, 895, 899 AND 935.

4.3-72

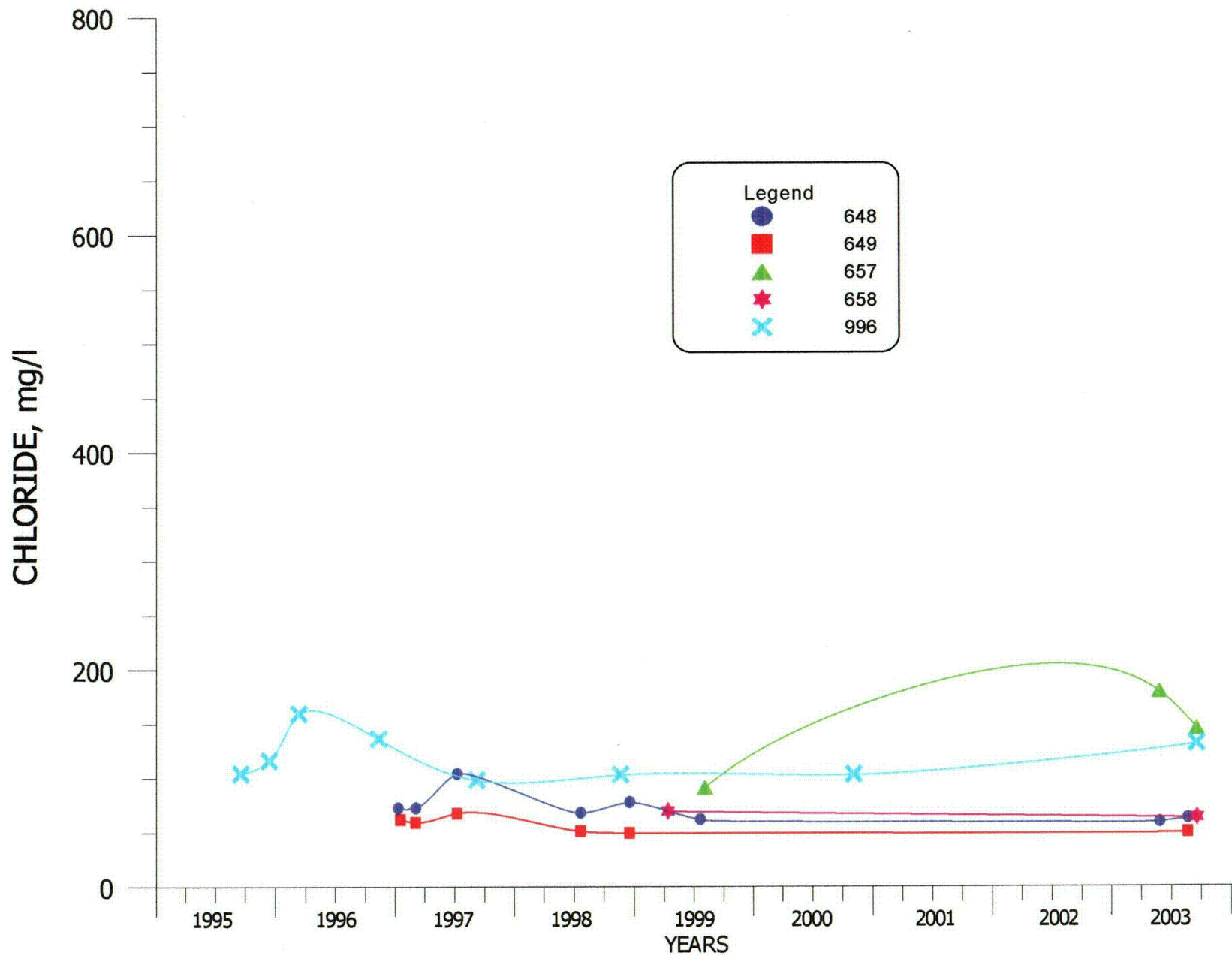
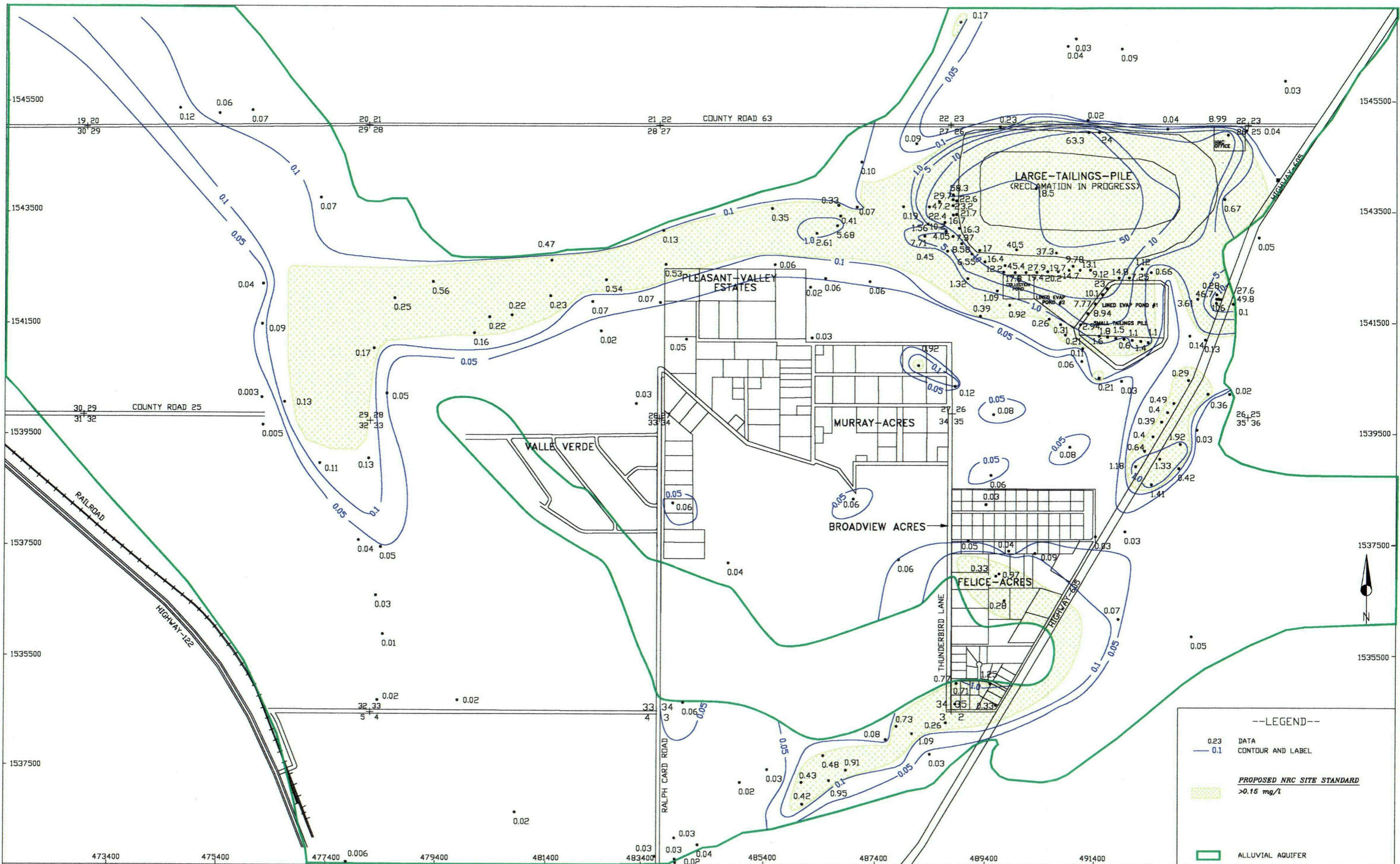


FIGURE 4.3-52. CHLORIDE CONCENTRATIONS FOR WELLS 648, 649, 657, 658 AND 996.



SCALE: 1"=1600'
 CAPROJECTS\
 2004-06\C-QAL03
 DATE: 03/24/04

HOMESTAKE-MILL-AND-ADJACENT-PROPERTIES
 GRANTS-NM-TOWNSHIP-11&12-N-RANGE-10-W

FIGURE 4.3-53. URANIUM CONCENTRATIONS
 OF THE ALLUVIAL AQUIFER, 2003, mg/l

4.3-74

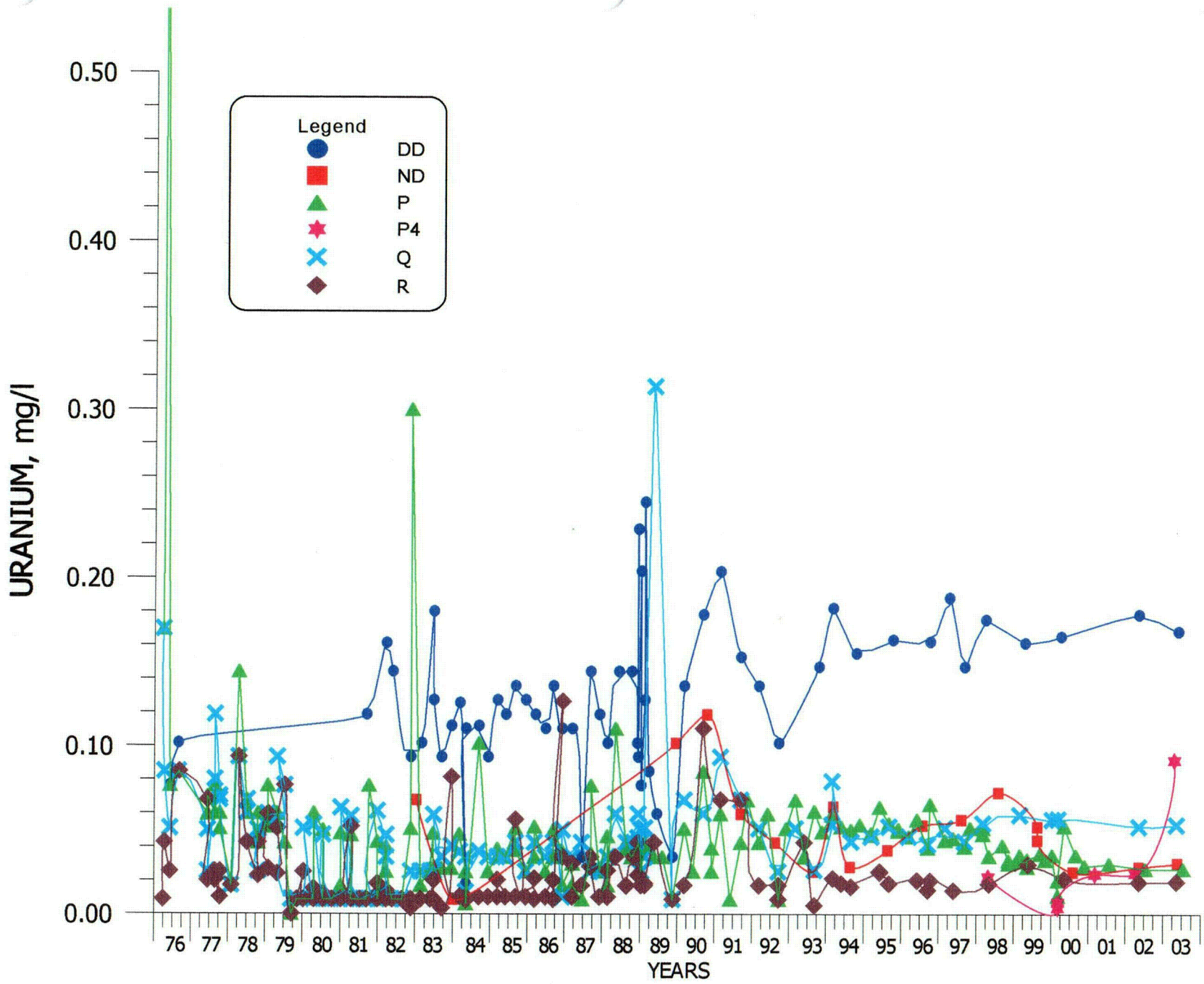


FIGURE 4.3-54. URANIUM CONCENTRATIONS FOR WELLS DD, ND, P, P4, Q AND R.

4.3-75

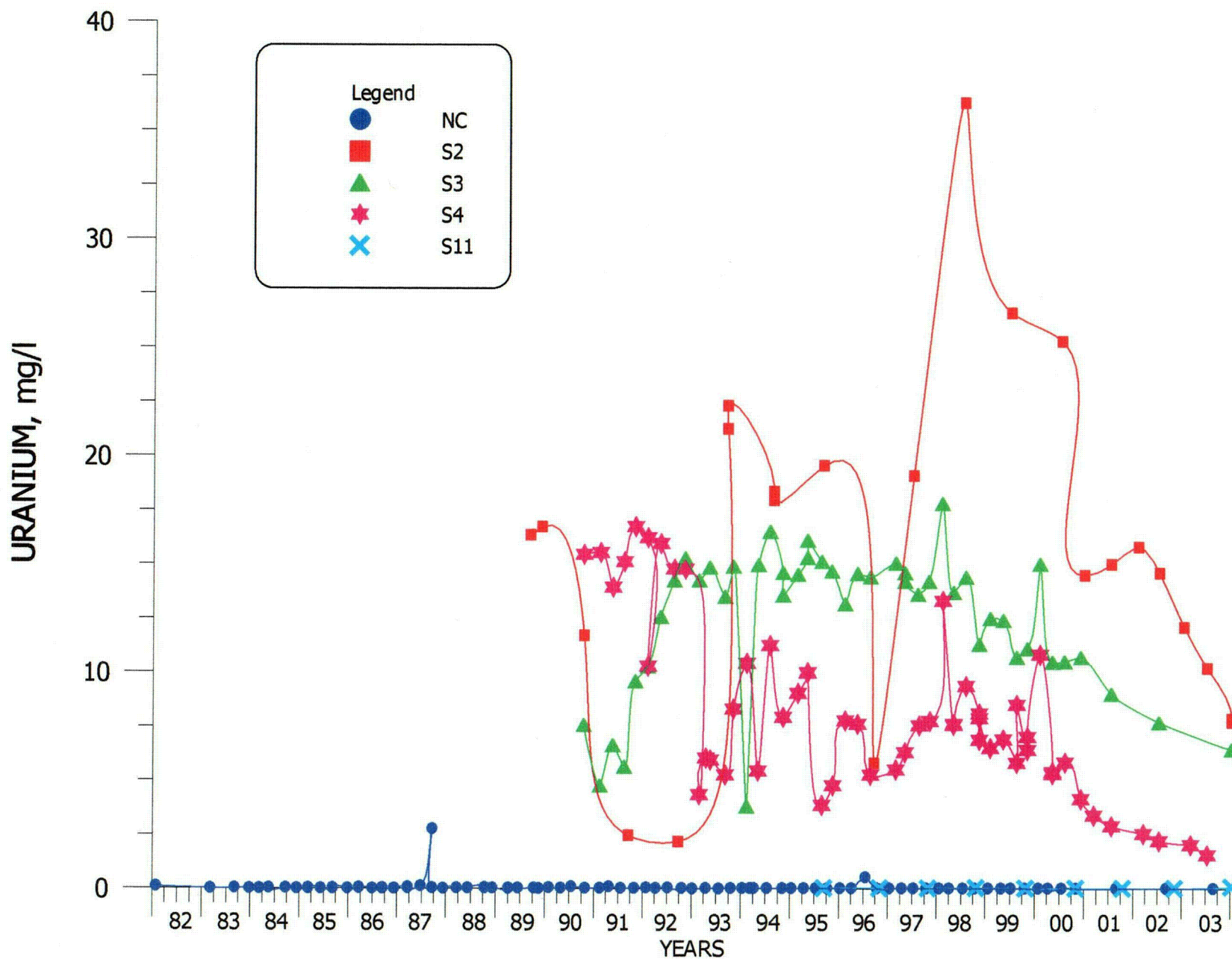


FIGURE 4.3-55. URANIUM CONCENTRATIONS FOR WELLS NC, S2, S3, S4 AND S11.

4.3-76

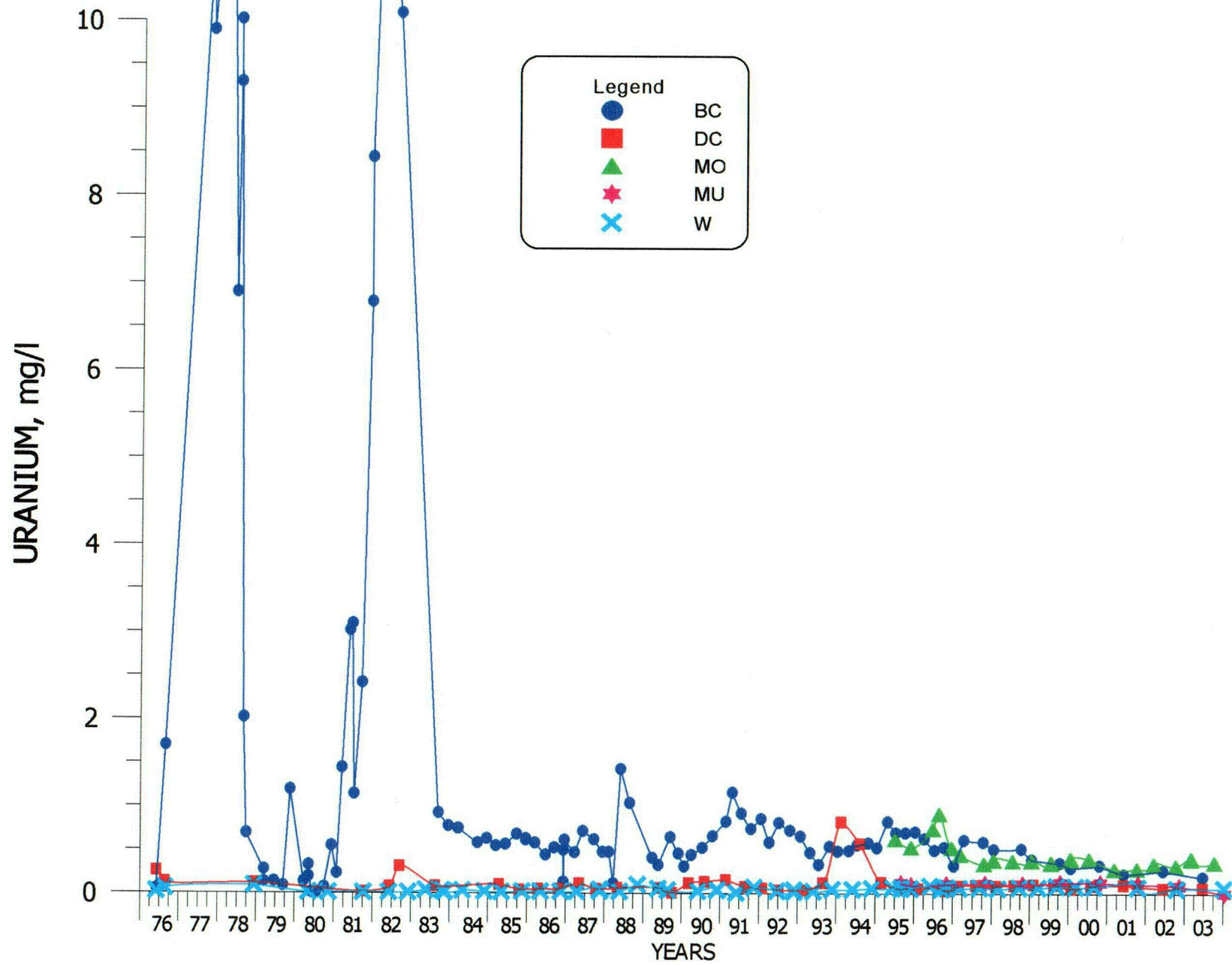


FIGURE 4.3-56. URANIUM CONCENTRATIONS FOR WELLS BC, DC, MO, MU AND W.

4.3-77

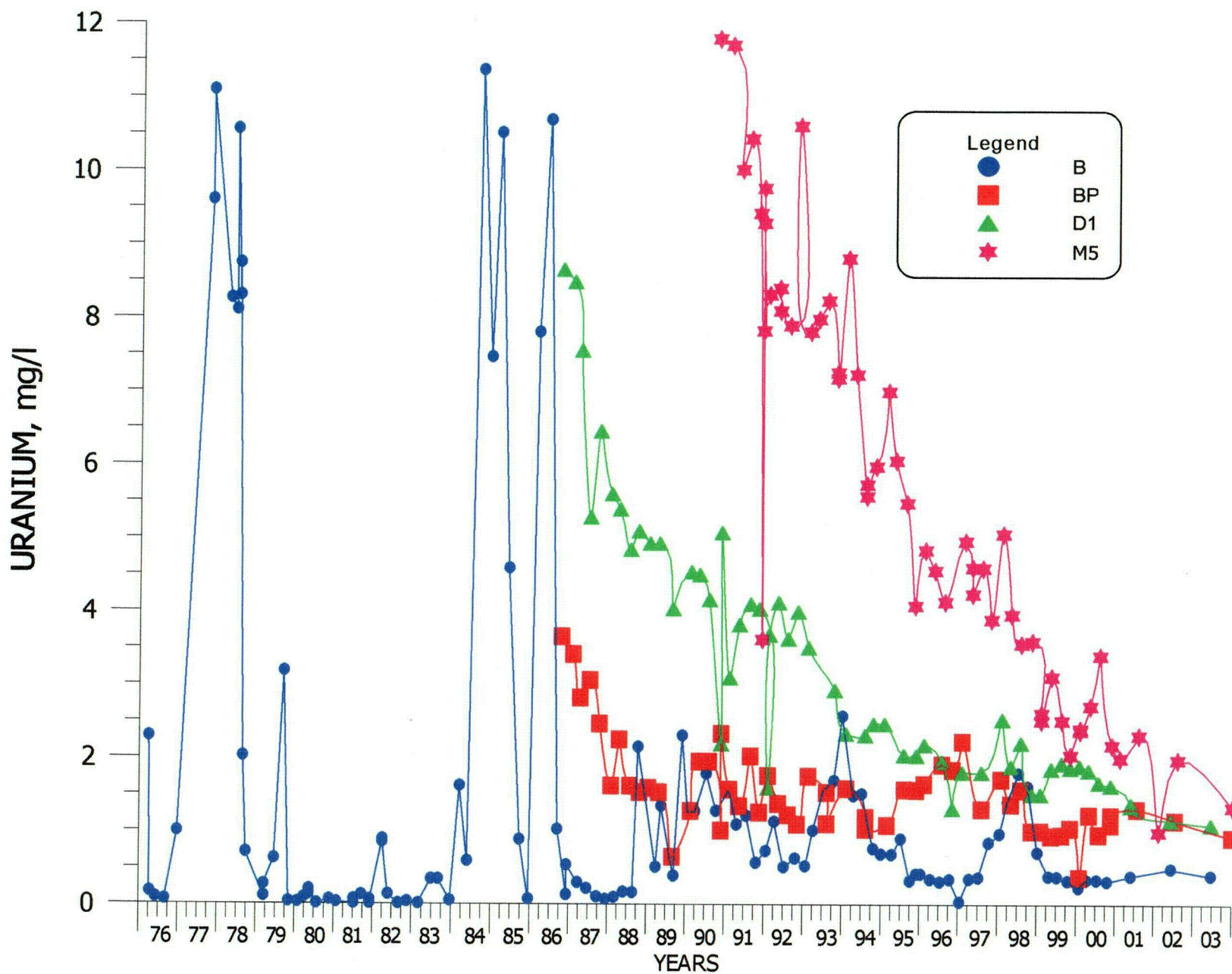


FIGURE 4.3-57. URANIUM CONCENTRATIONS FOR WELLS B, BP, D1 AND M5.

C92

4.3-78

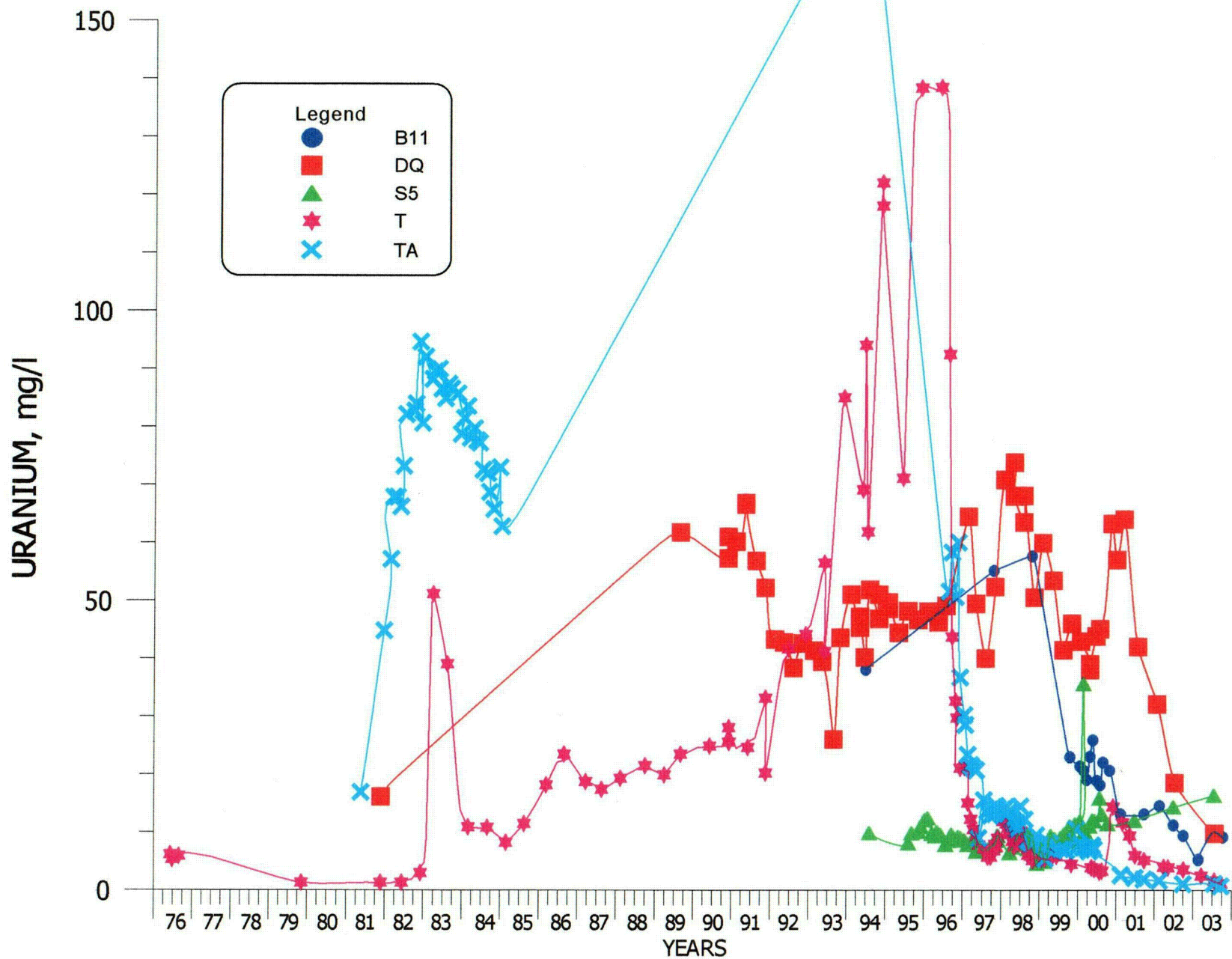


FIGURE 4.3-58. URANIUM CONCENTRATIONS FOR WELLS B11, DQ, S5, T AND TA.

4.3-79

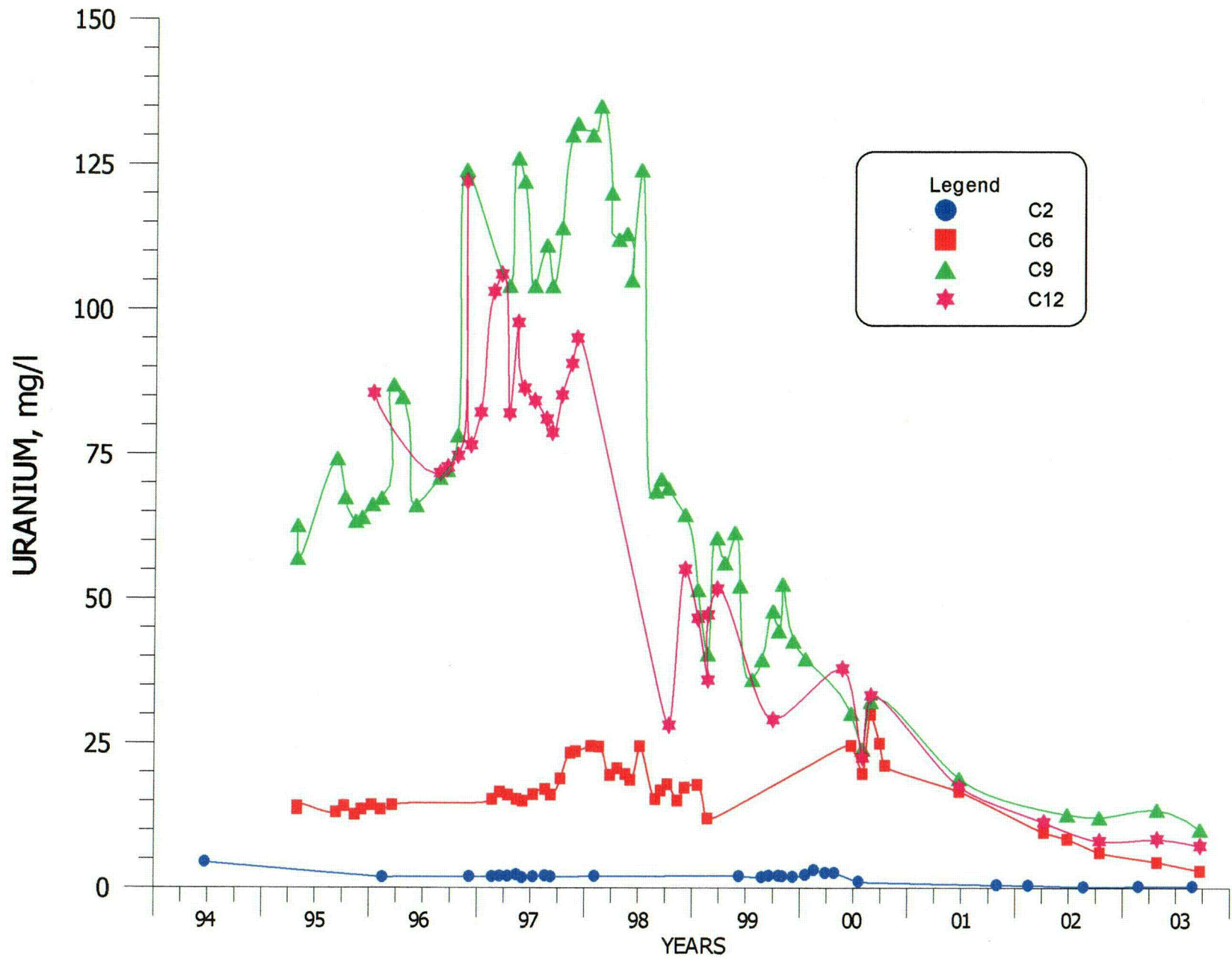


FIGURE 4.3-59. URANIUM CONCENTRATIONS FOR WELLS C2, C6, C9 AND C12.

4.3-80

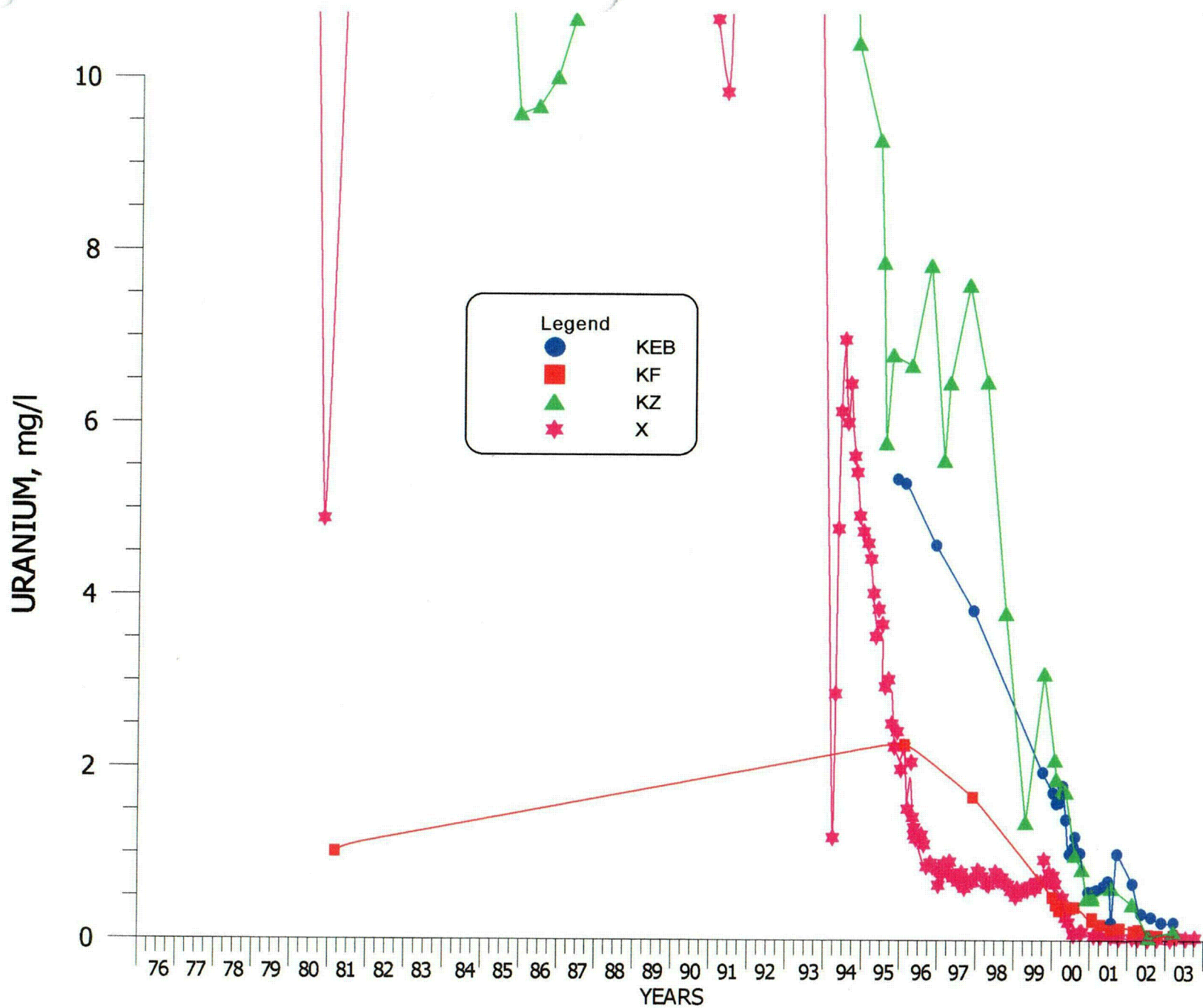


FIGURE 4.3-60. URANIUM CONCENTRATIONS FOR WELLS KEB, KF, KZ AND X.

4.3-81

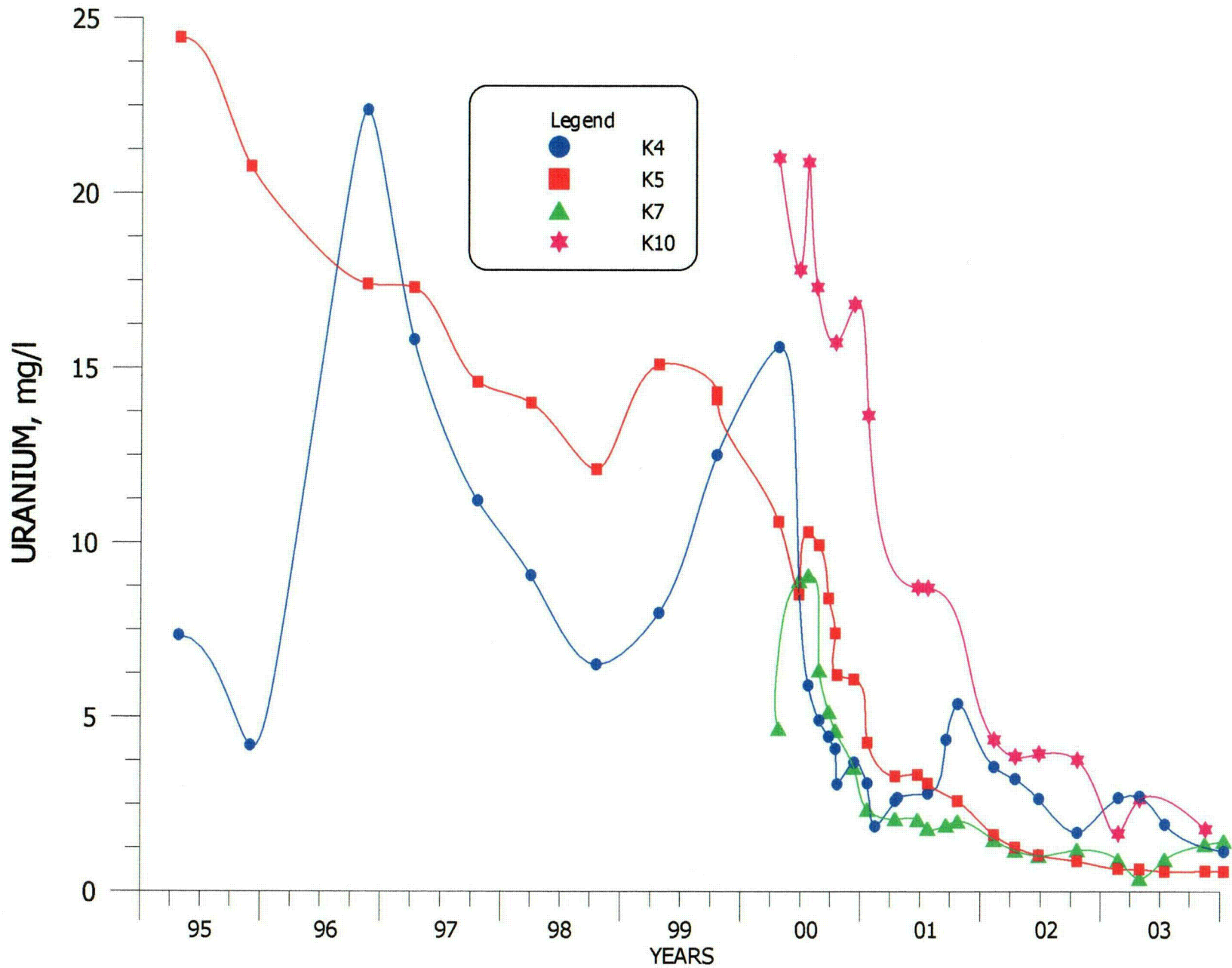


FIGURE 4.3-61. URANIUM CONCENTRATIONS FOR WELLS K4, K5, K7 AND K10.

4.3-82

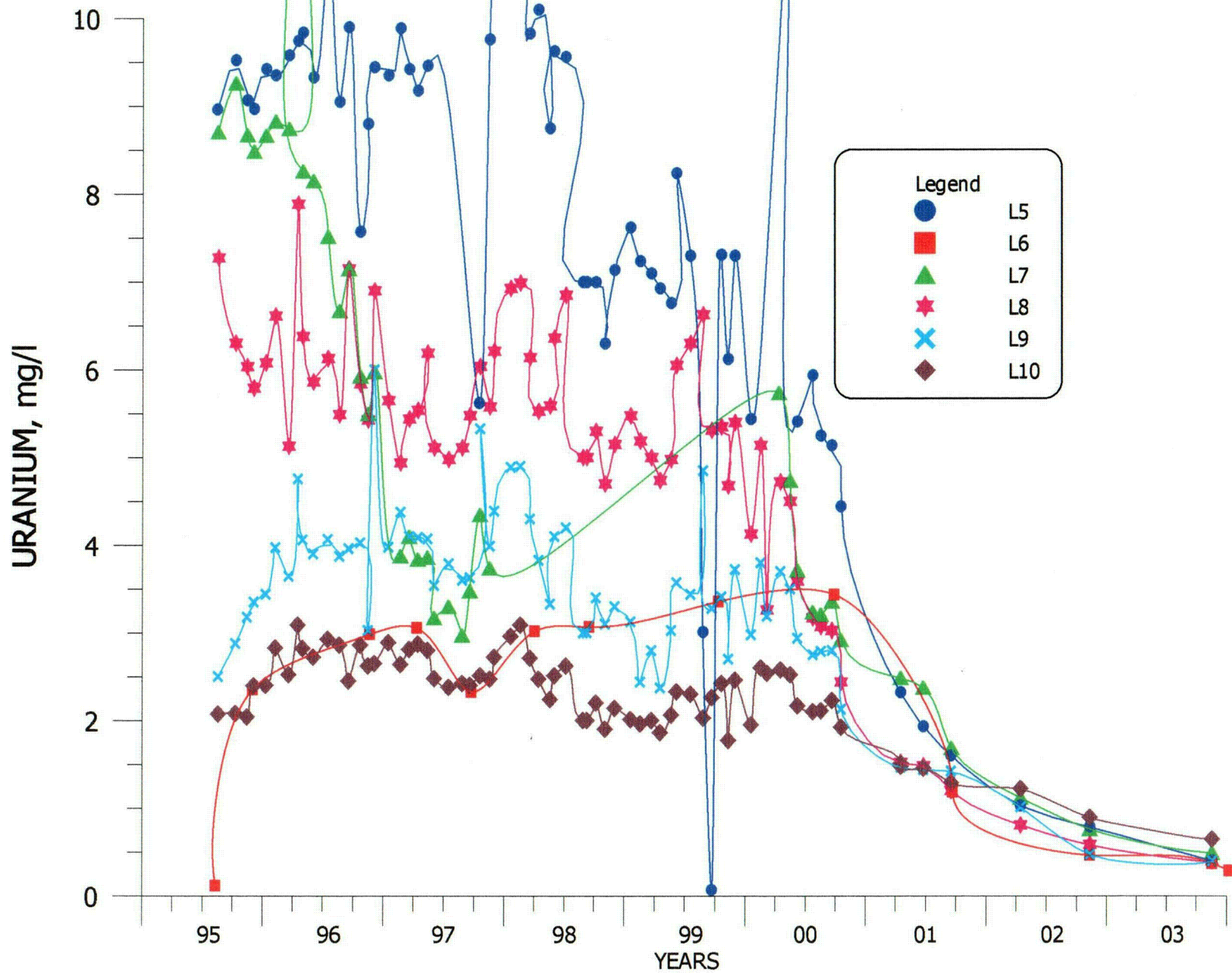


FIGURE 4.3-62. URANIUM CONCENTRATIONS FOR WELLS L5, L6, L7, L8, L9 AND L10.

4.3-83

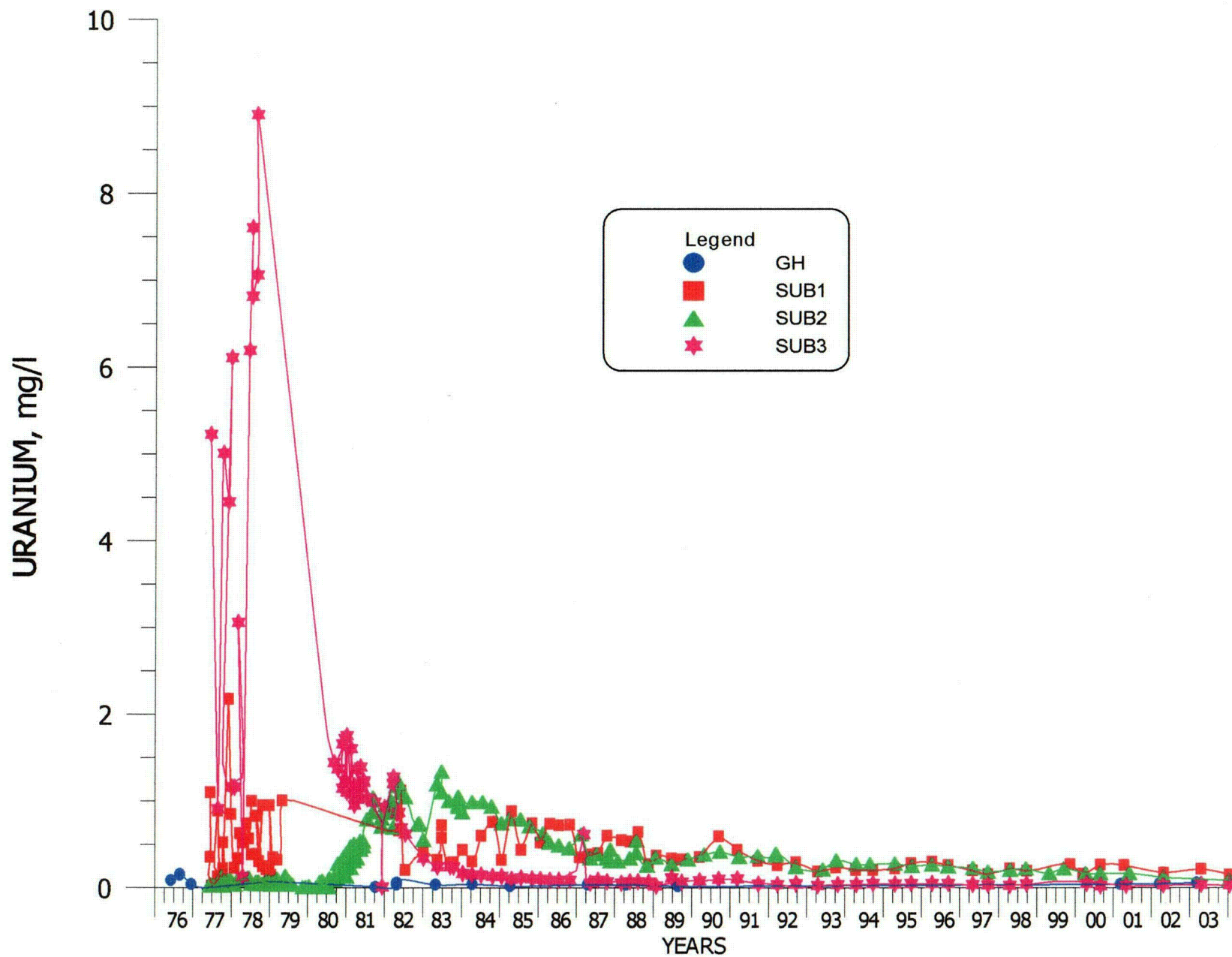


FIGURE 4.3-63. URANIUM CONCENTRATIONS FOR WELLS GH, SUB1, SUB2 AND SUB3.

4.3-84

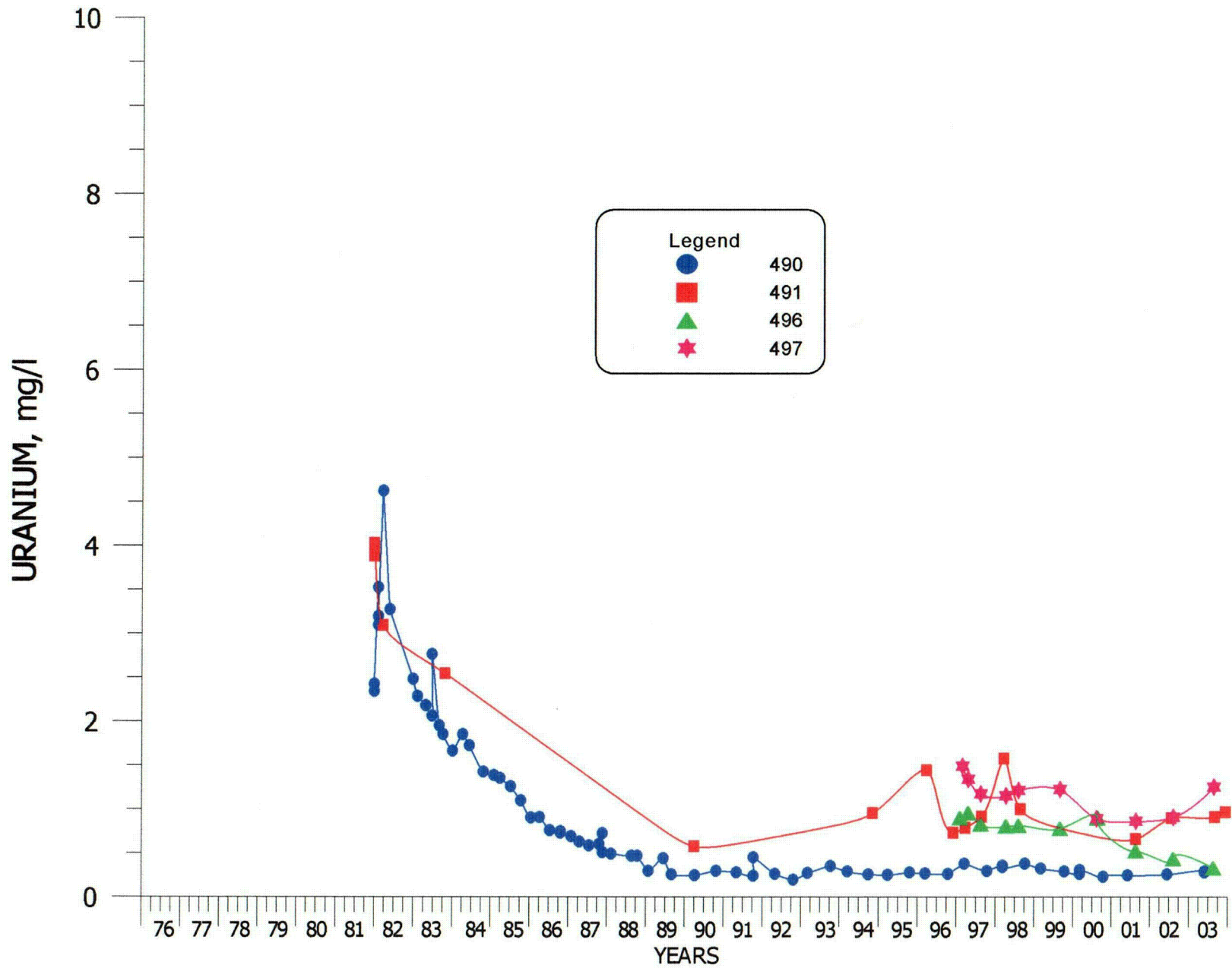


FIGURE 4.3-64. URANIUM CONCENTRATIONS FOR WELLS 490, 491, 496 AND 497.

4.3-85

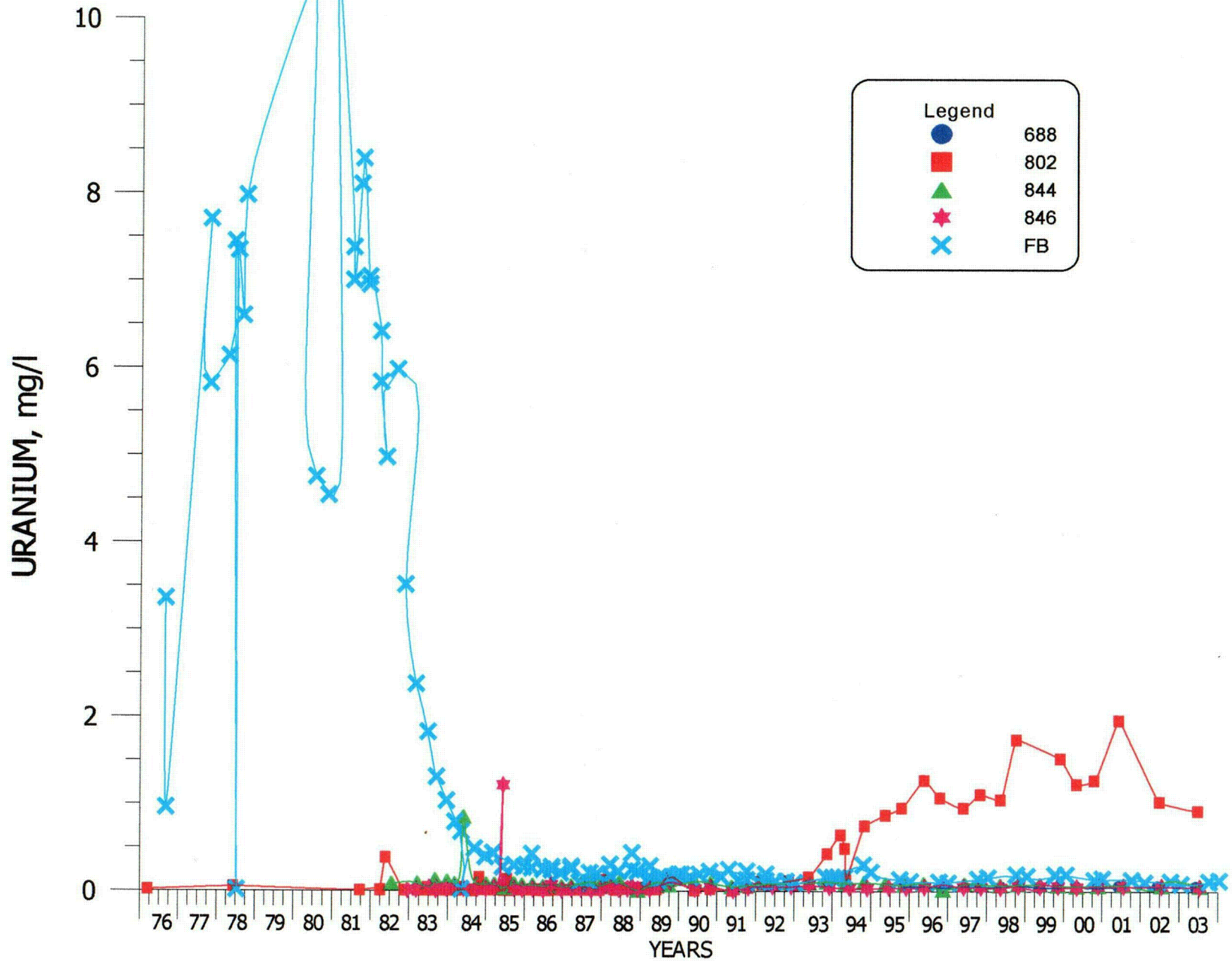


FIGURE 4.3-65. URANIUM CONCENTRATIONS FOR WELLS 688, 802, 844, 846 AND FB.