

FIGURE 4.3-6. SULFATE CONCENTRATIONS FOR WELLS B, BP, D1 AND M5.

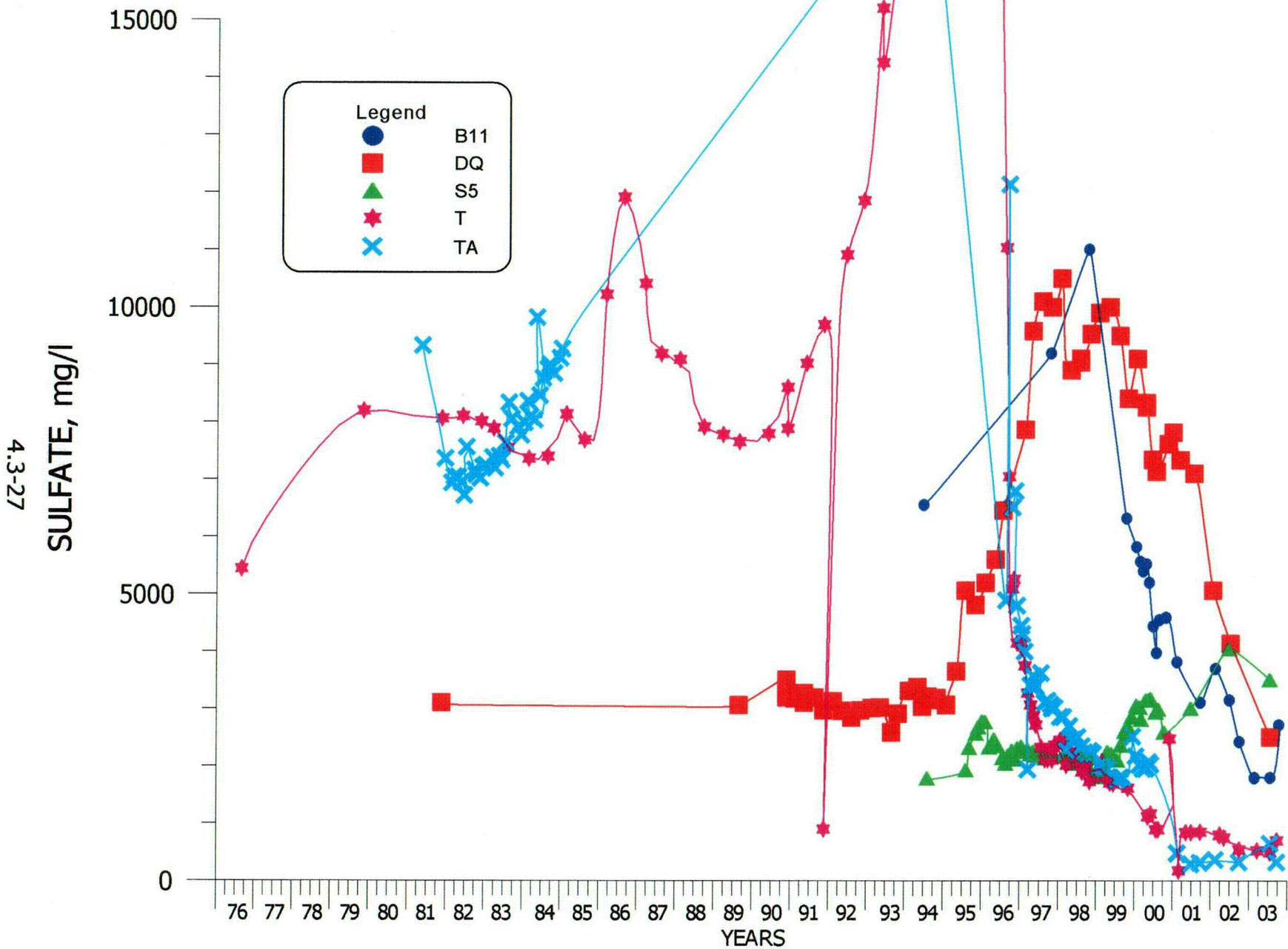


FIGURE 4.3-7. SULFATE CONCENTRATIONS FOR WELLS B11, DQ, S5, T AND TA.

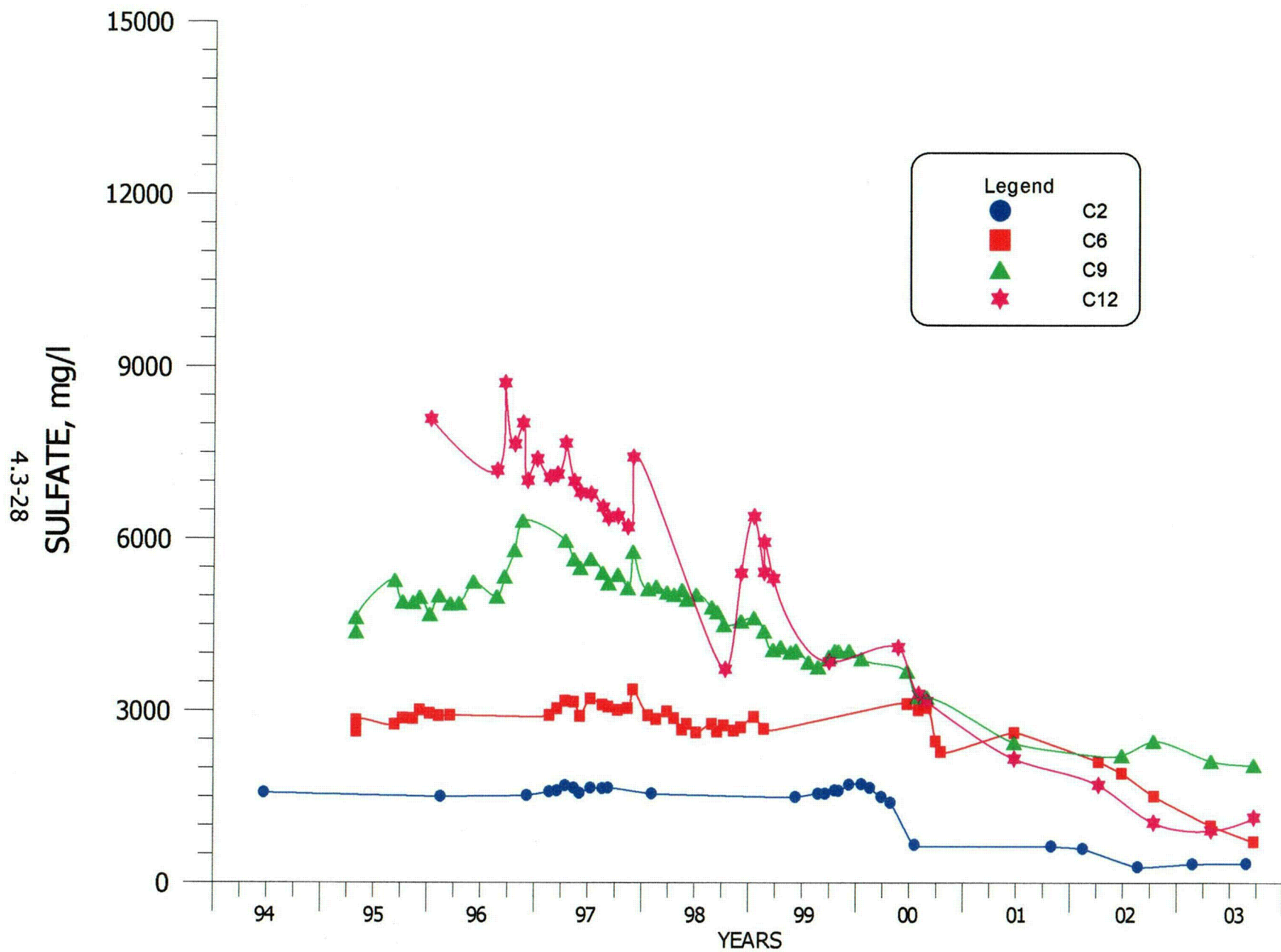


FIGURE 4.3-8. SULFATE CONCENTRATIONS FOR WELLS C2, C6, C9 AND C12.

4.3-29

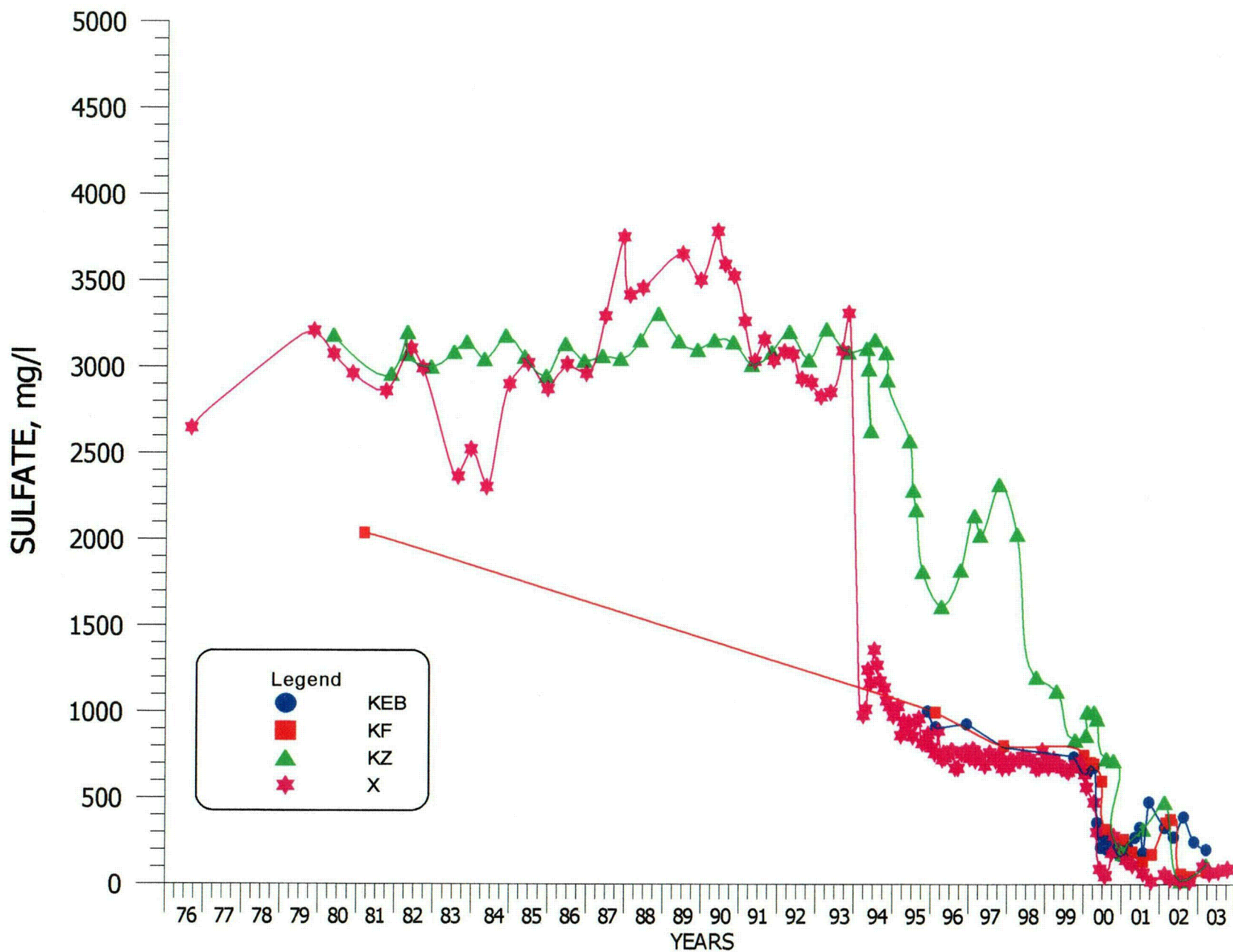


FIGURE 4.3-9. SULFATE CONCENTRATIONS FOR WELLS KEB, KF, KZ AND X.

4.3-30

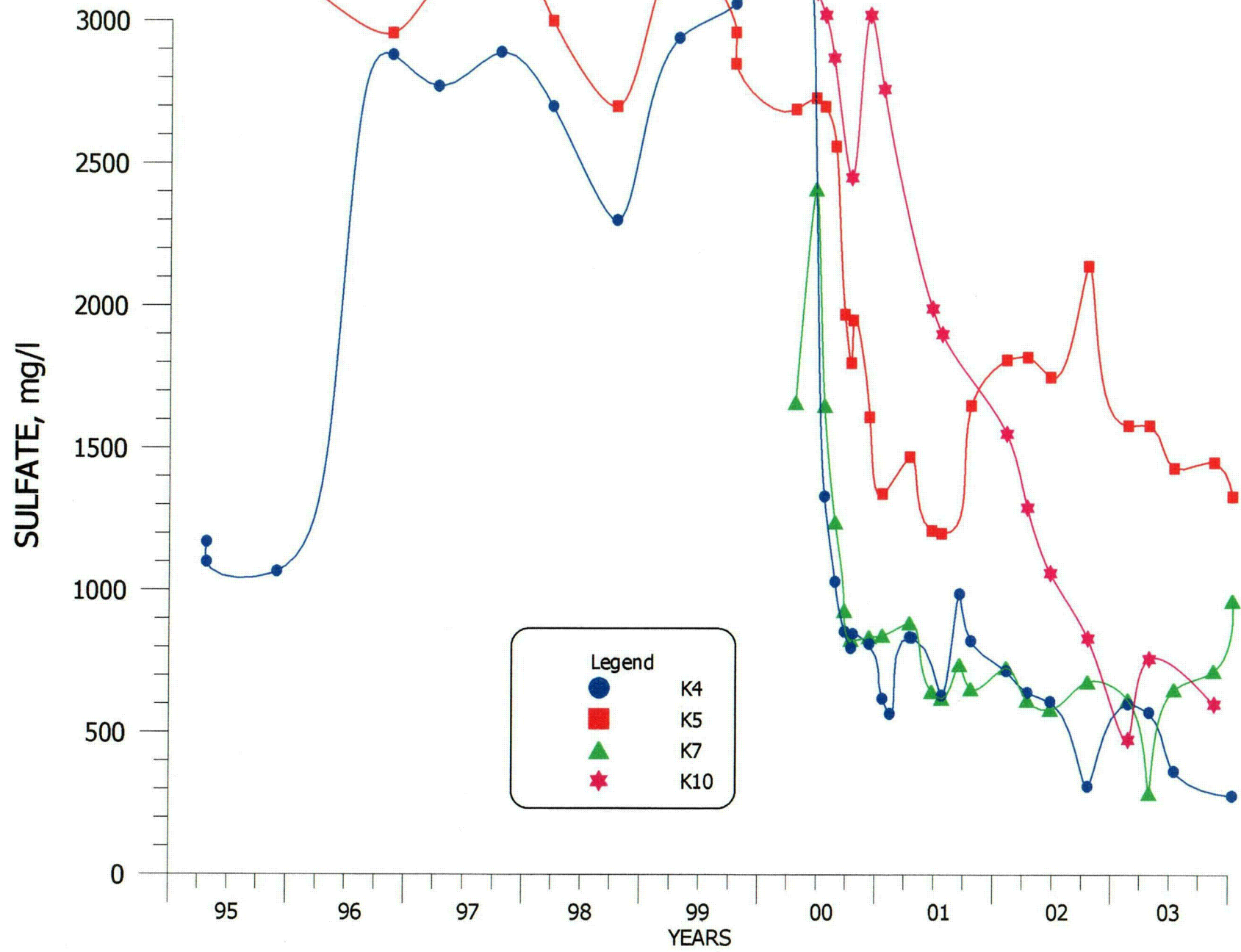


FIGURE 4.3-10. SULFATE CONCENTRATIONS FOR WELLS K4, K5, K7 AND K10.

4.3-31

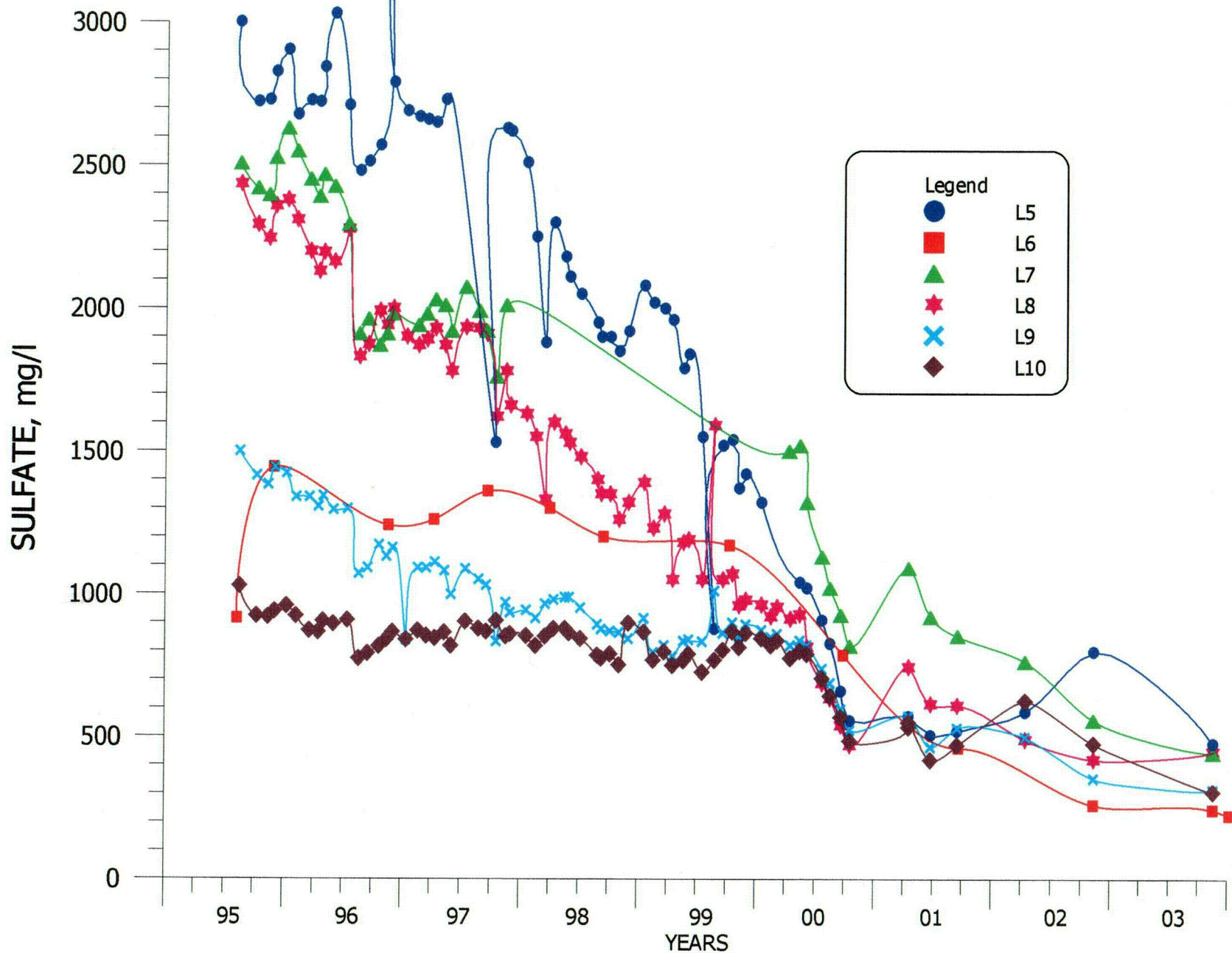


FIGURE 4.3-11. SULFATE CONCENTRATIONS FOR WELLS L5, L6, L7, L8, L9 AND L10.

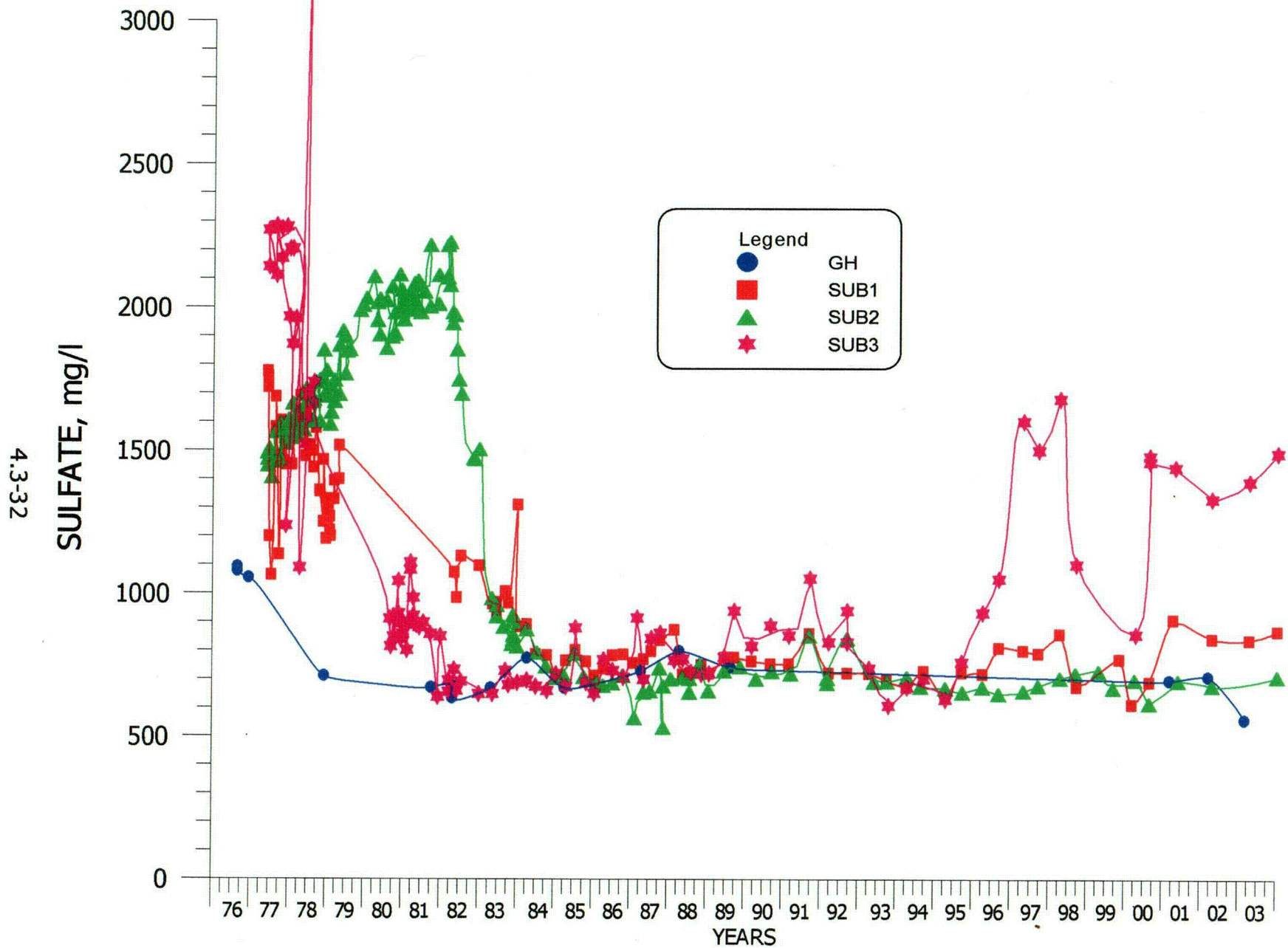


FIGURE 4.3-12. SULFATE CONCENTRATIONS FOR WELLS GH, SUB1, SUB2 AND SUB3.

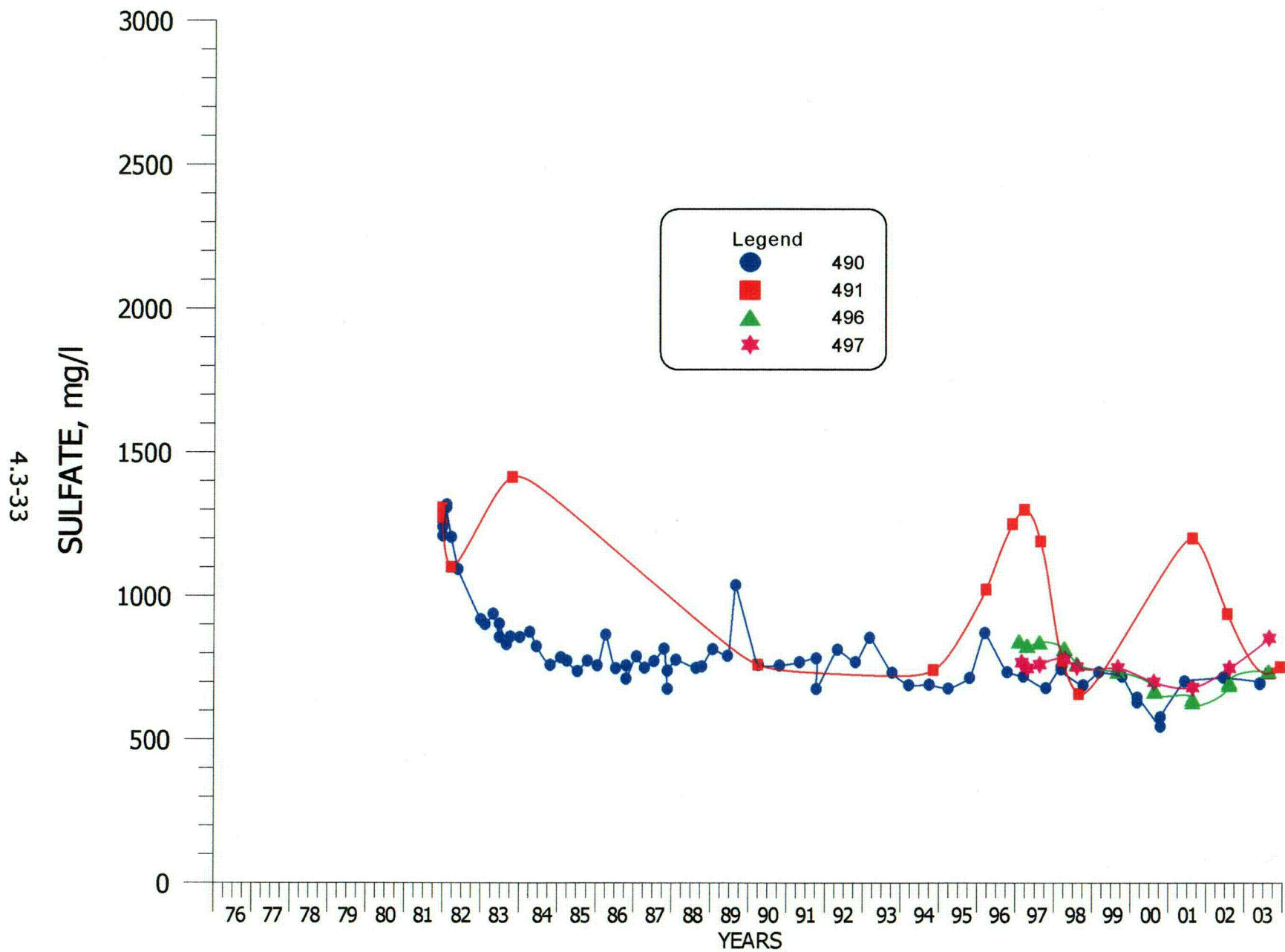


FIGURE 4.3-13. SULFATE CONCENTRATIONS FOR WELLS 490, 491, 496 AND 497.

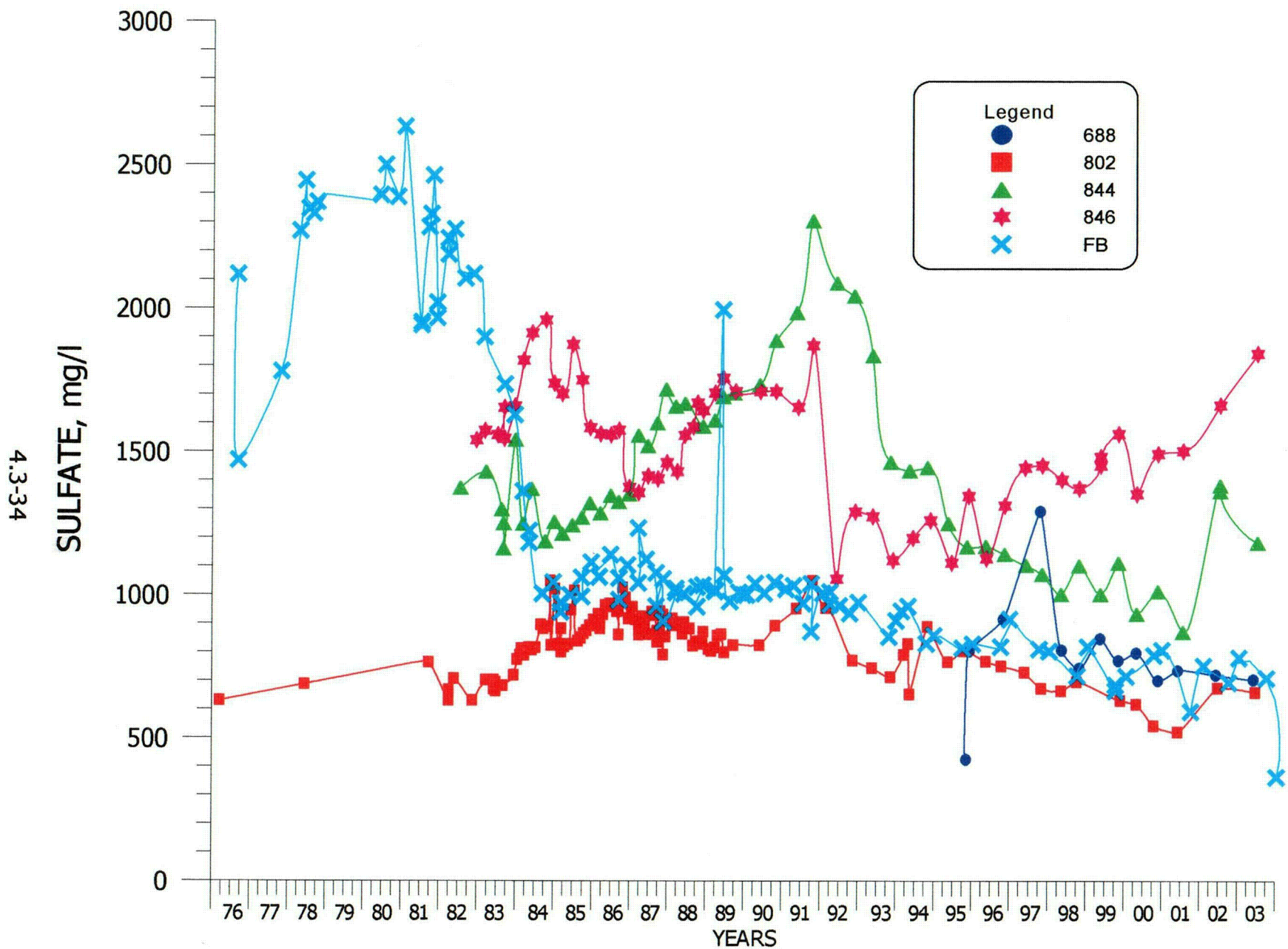


FIGURE 4.3-14. SULFATE CONCENTRATIONS FOR WELLS 688, 802, 844, 846 AND FB.

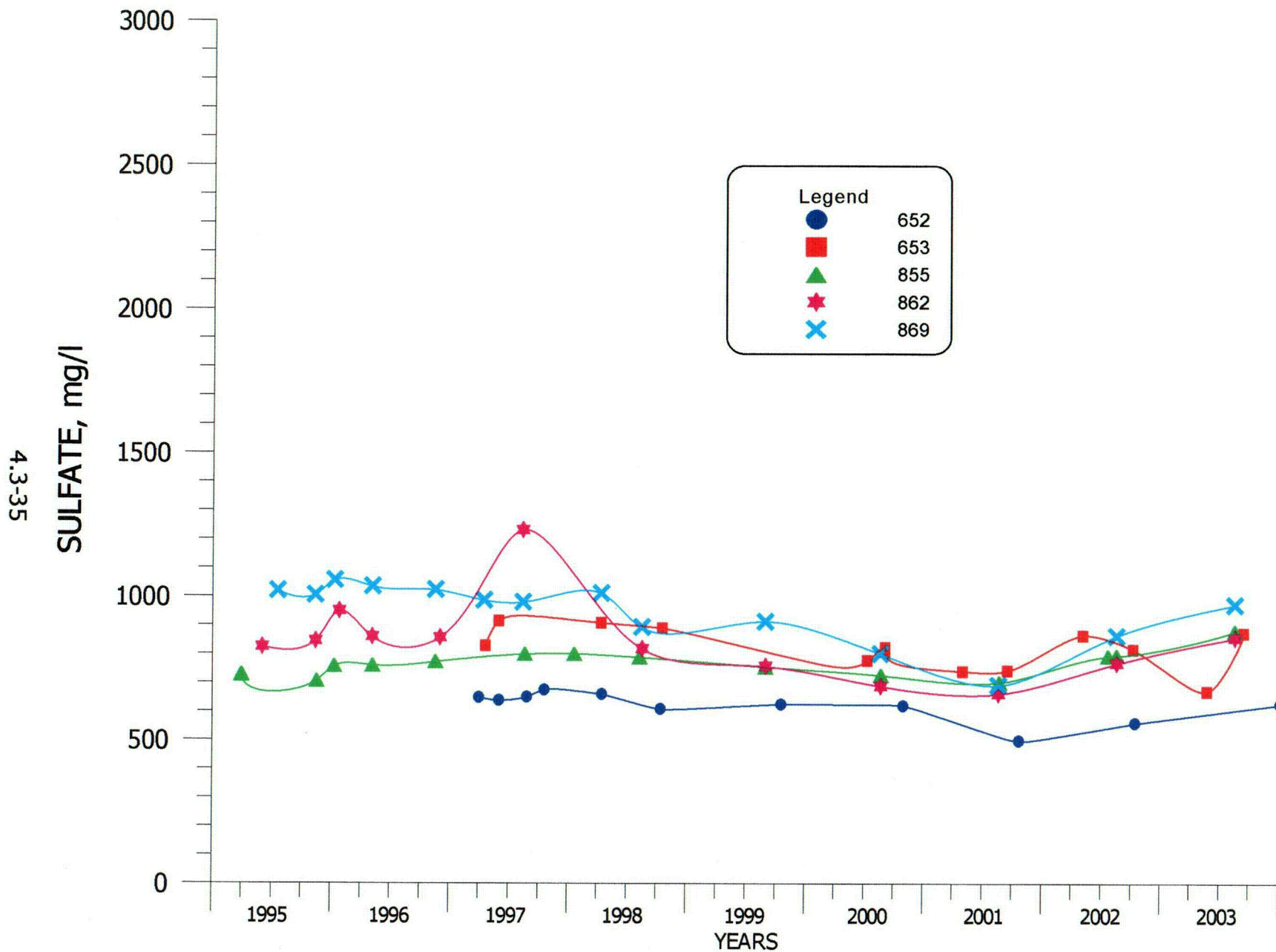


FIGURE 4.3-15. SULFATE CONCENTRATIONS FOR WELLS 652, 653, 855, 862 AND 869.

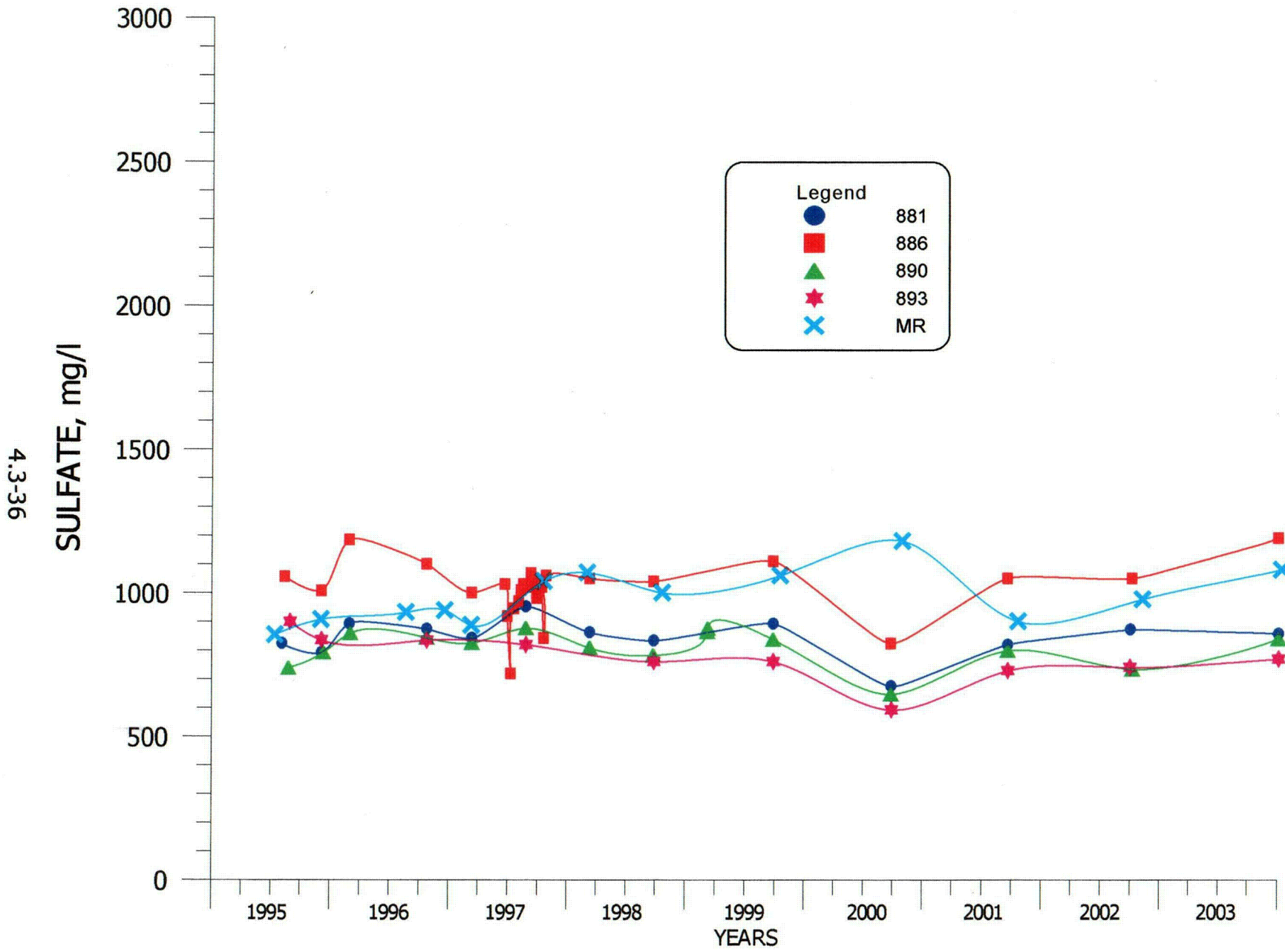


FIGURE 4.3-16. SULFATE CONCENTRATIONS FOR WELLS 881, 886, 890, 893 AND MR.

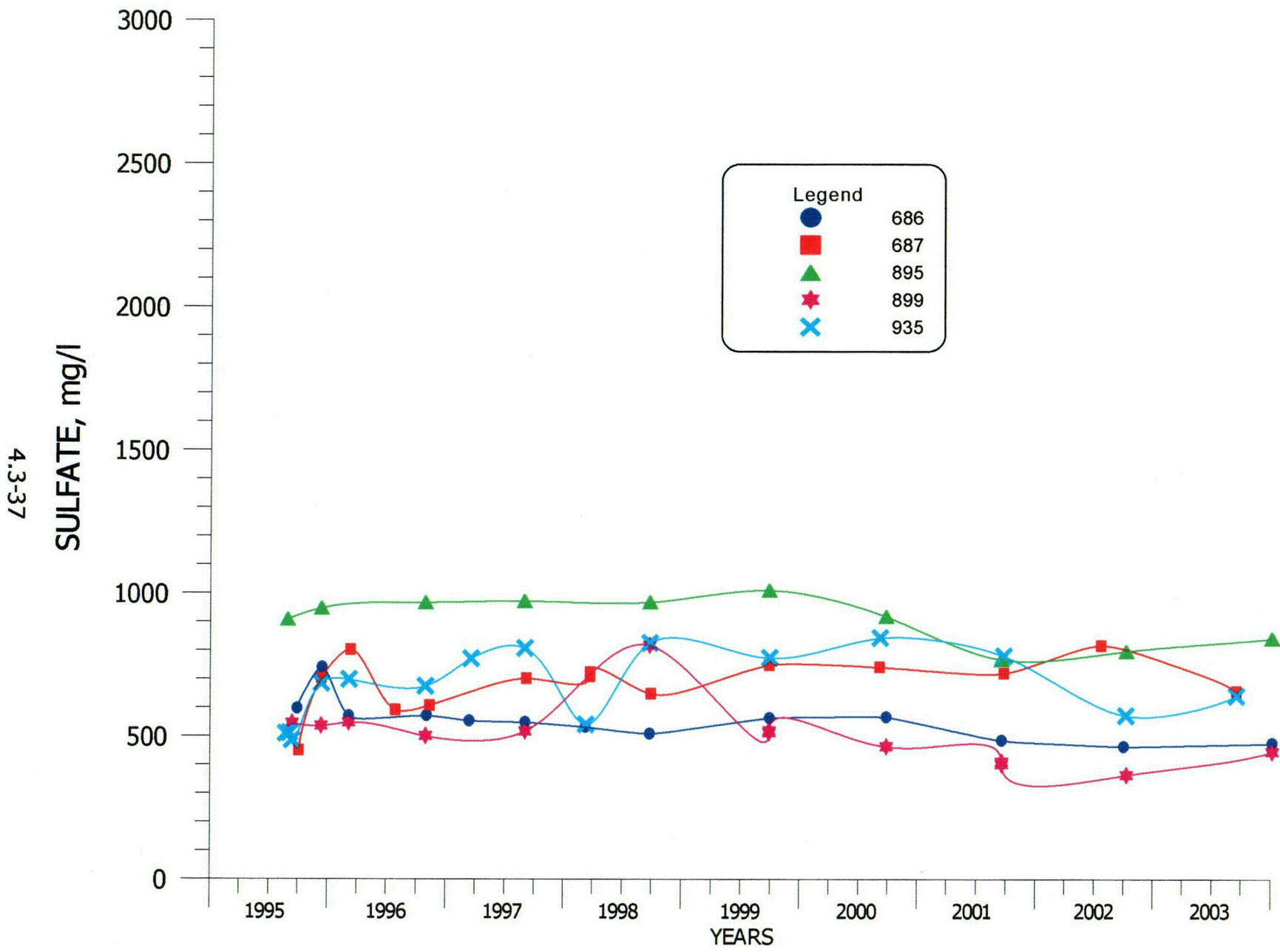


FIGURE 4.3-17. SULFATE CONCENTRATIONS FOR WELLS 686, 687, 895, 899 AND 935.

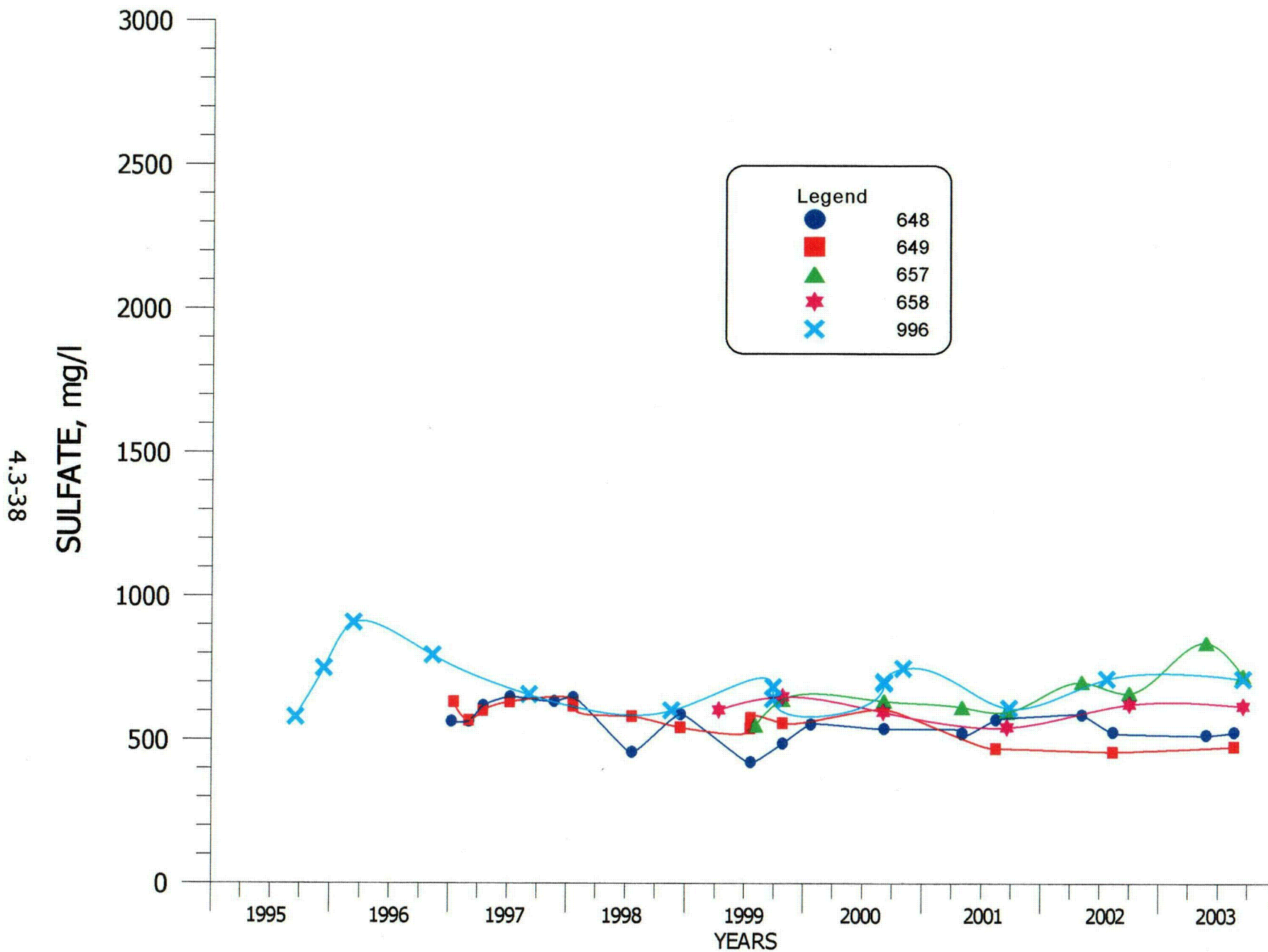
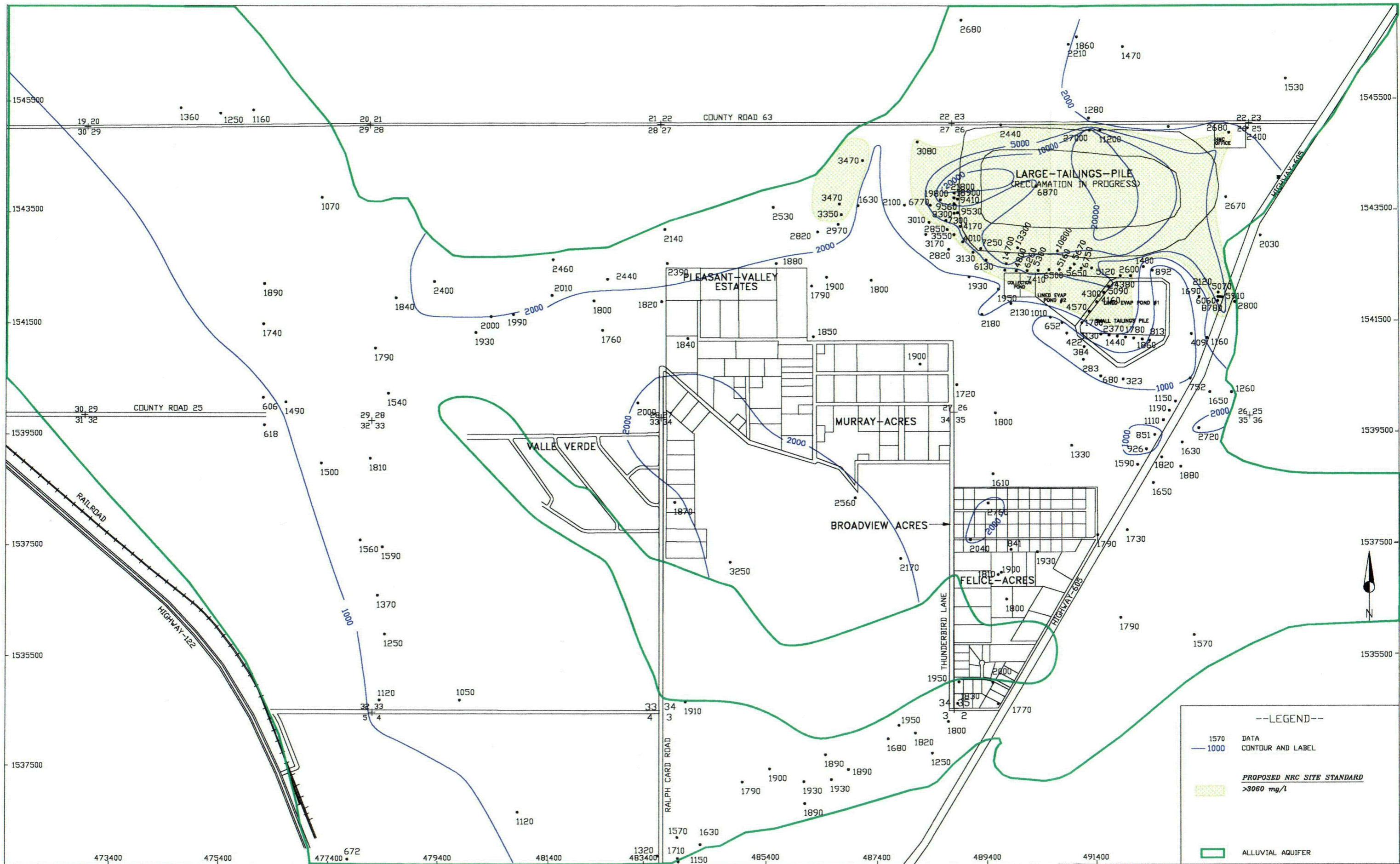


FIGURE 4.3-18. SULFATE CONCENTRATIONS FOR WELLS 648, 649, 657, 658 AND 996.



--LEGEND--

- 1570 DATA
- 1000 CONTOUR AND LABEL
- PROPOSED NRC SITE STANDARD >3060 mg/l
- ALLUVIAL AQUIFER

SCALE: 1"=1600'
 C:\PROJECTS\2004-06\QAL03
 DATE: 03/16/04

HOMESTAKE-MILL-AND-ADJACENT-PROPERTIES
 GRANTS-NM-TOWNSHIP-11&12-N-RANGE-10-W

FIGURE 4.3-19. TDS CONCENTRATIONS OF THE ALLUVIAL AQUIFER, 2003, mg/l

CH4

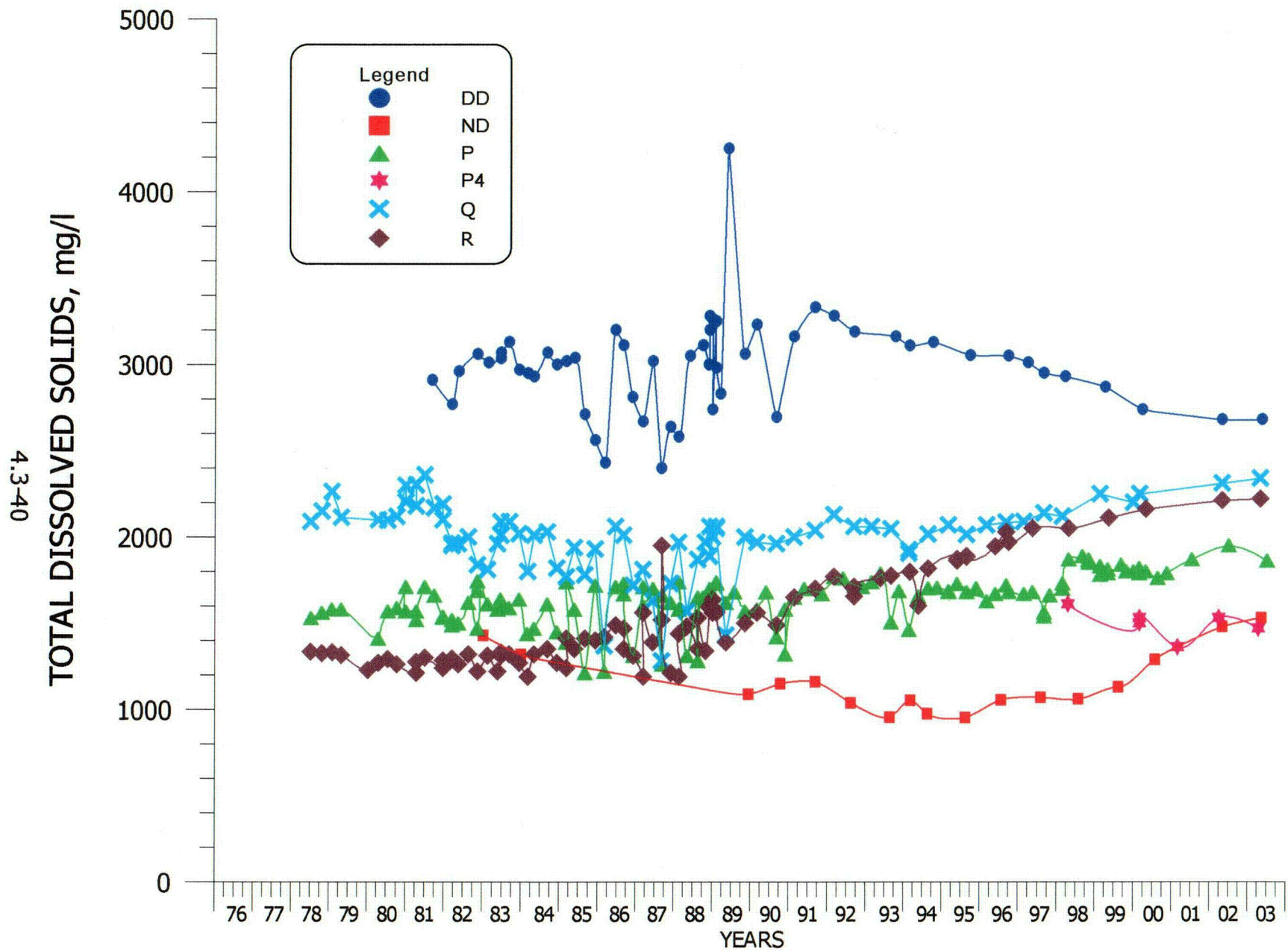


FIGURE 4.3-20. TDS CONCENTRATIONS FOR WELLS DD, ND, P, P4, Q AND R.

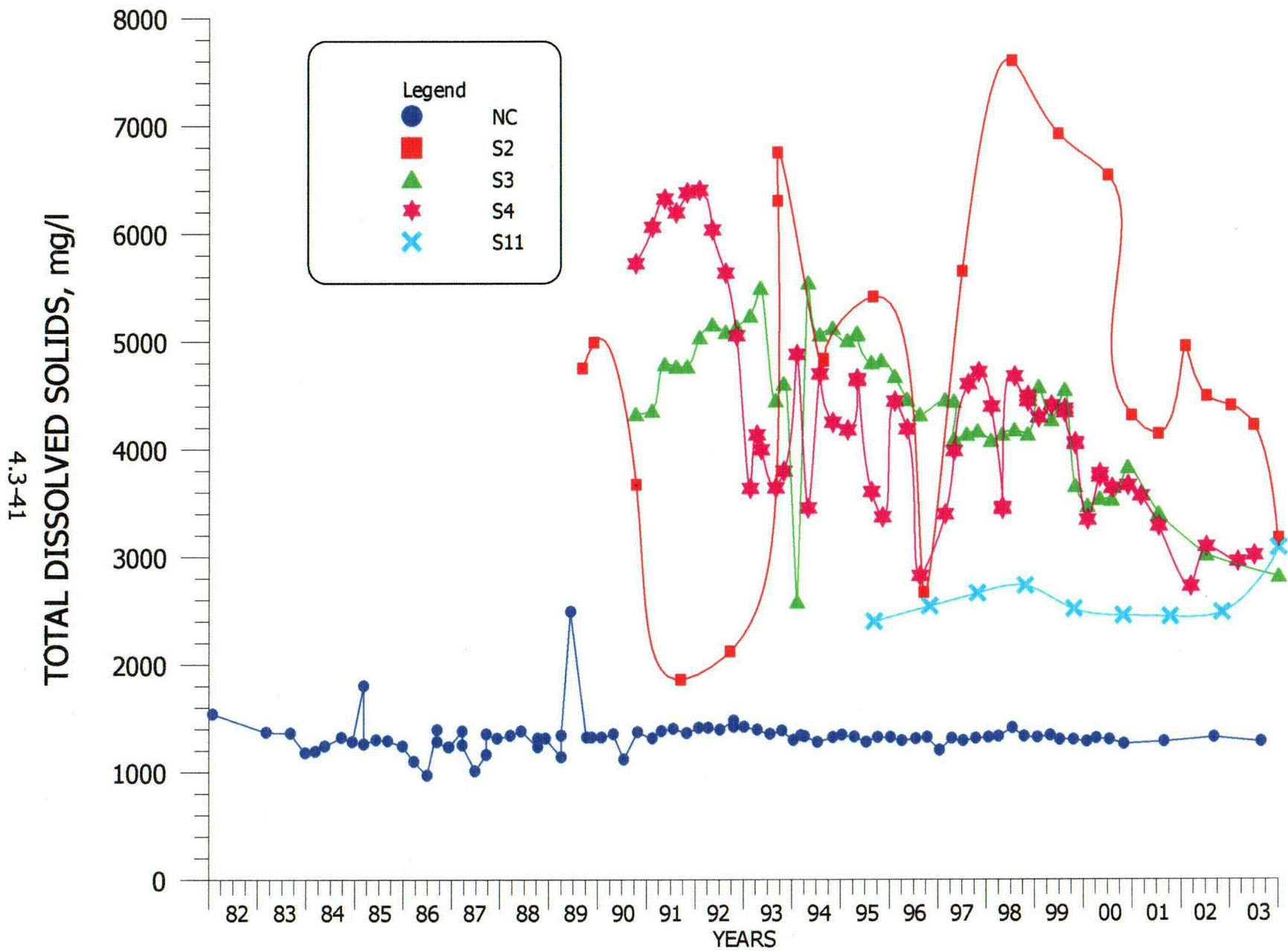


FIGURE 4.3-21. TDS CONCENTRATIONS FOR WELLS NC, S2, S3, S4 AND S11.

4.3-42

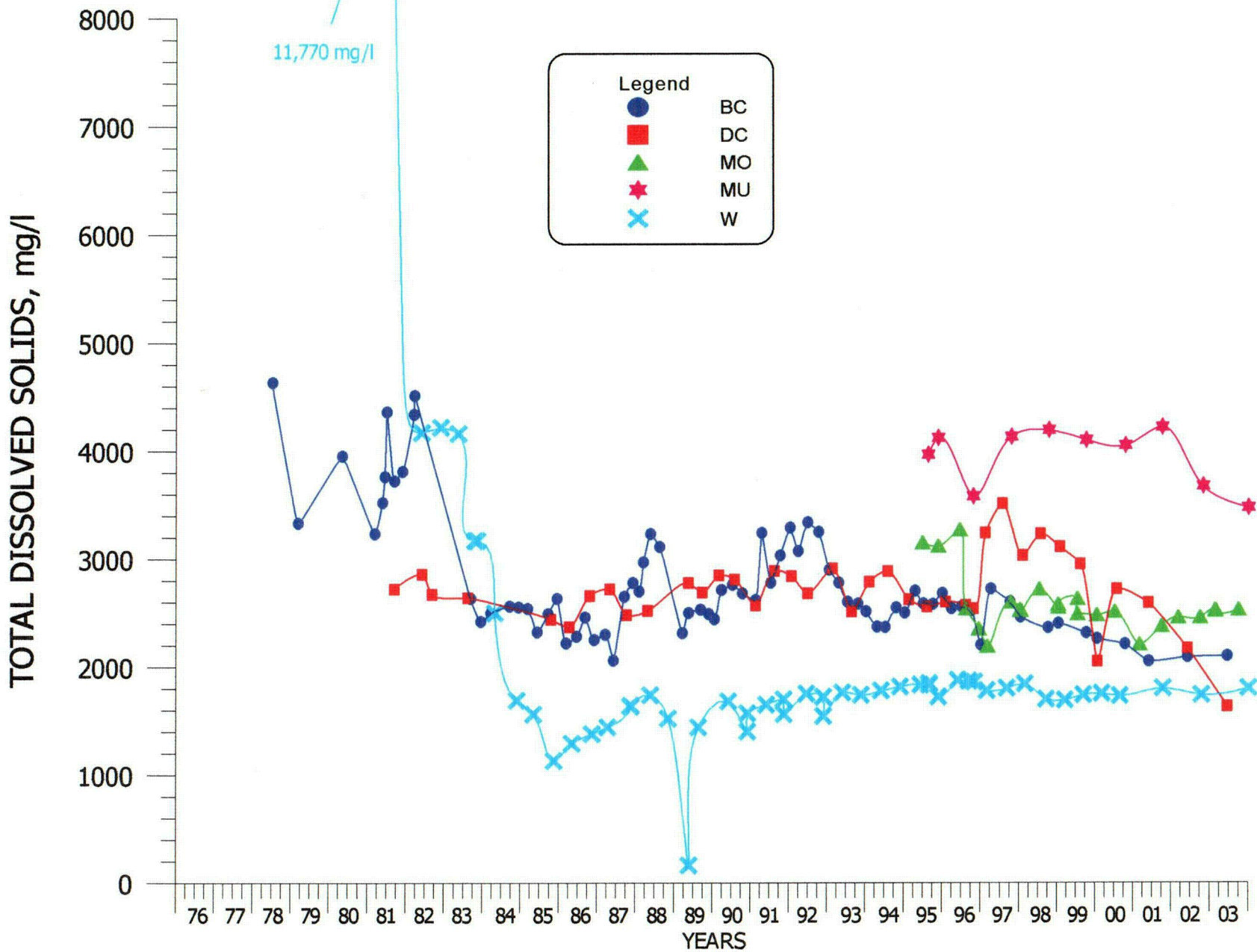


FIGURE 4.3-22. TDS CONCENTRATIONS FOR WELLS BC, DC, MO, MU AND W.

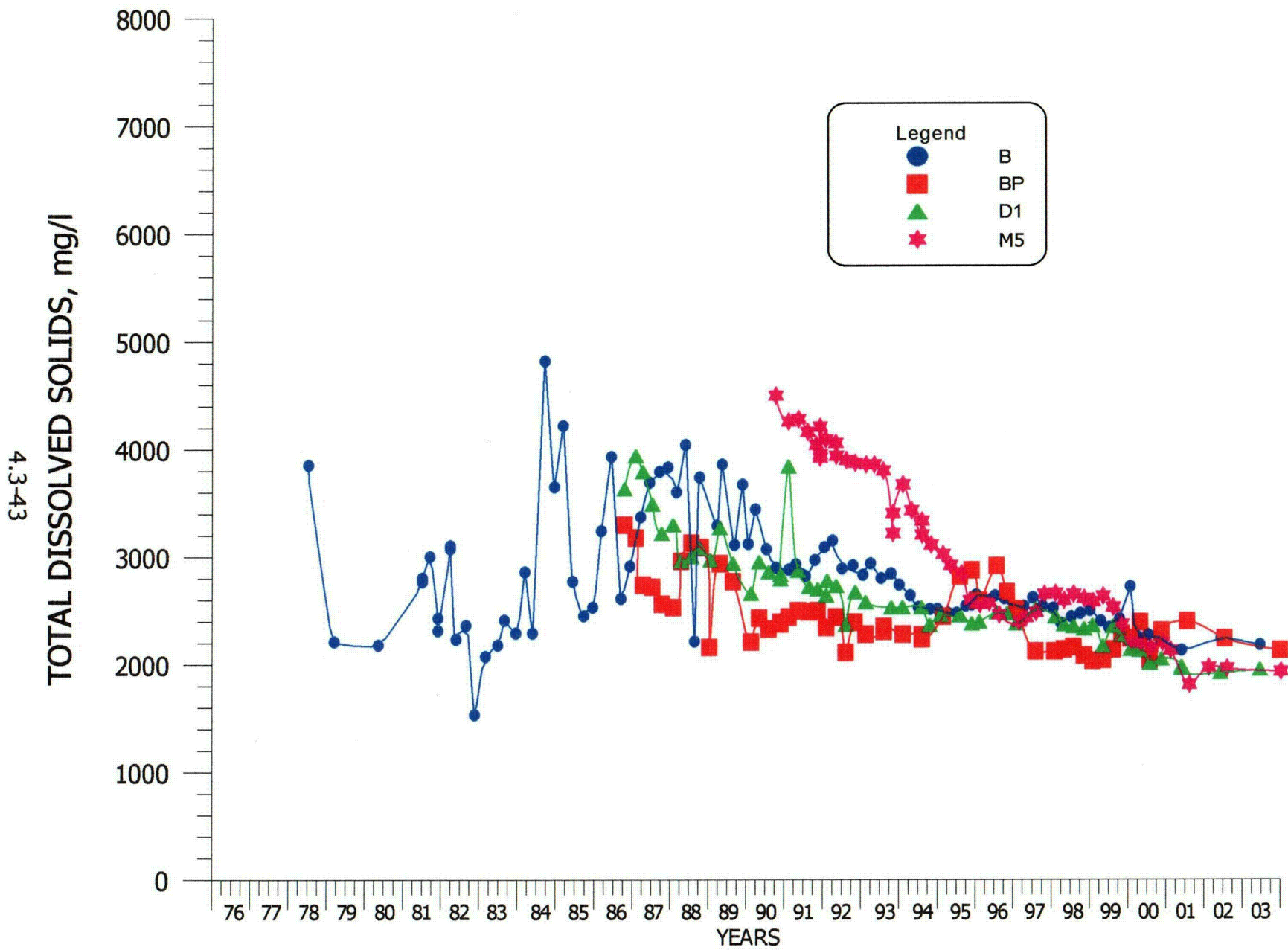


FIGURE 4.3-23. TDS CONCENTRATIONS FOR WELLS B, BP, D1 AND M5.

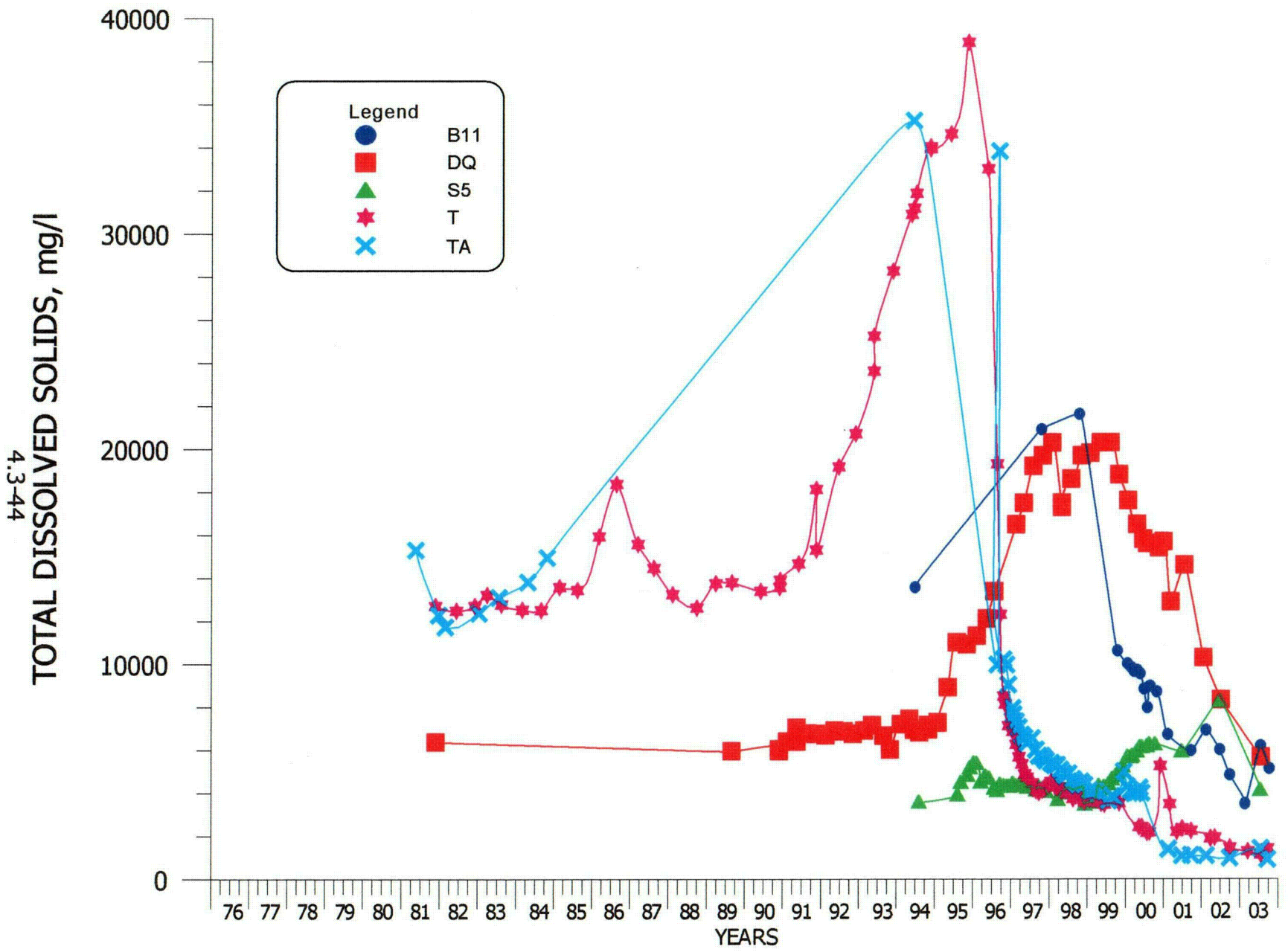


FIGURE 4.3-24. TDS CONCENTRATIONS FOR WELLS B11, DQ, S5, T AND TA.

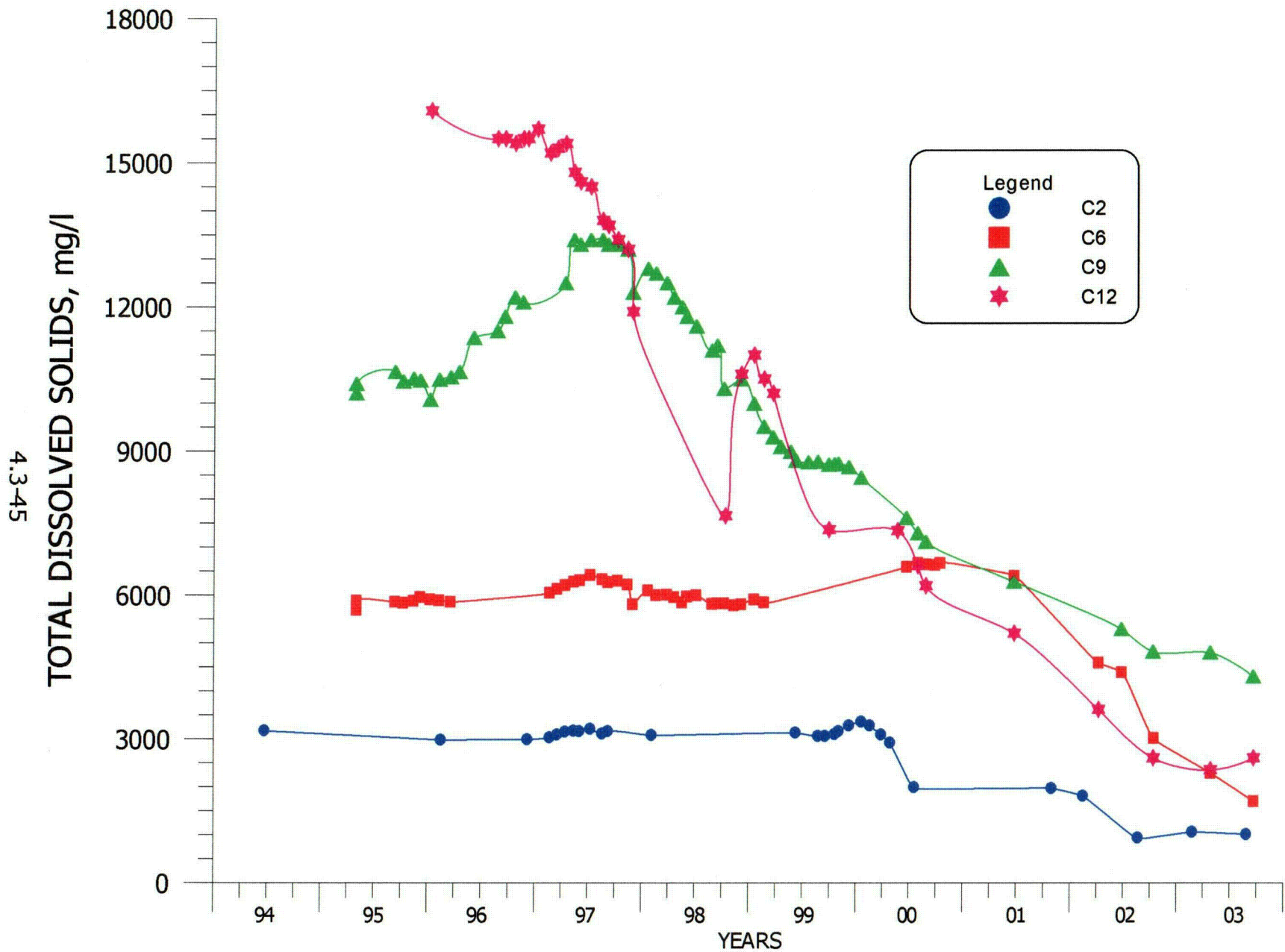


FIGURE 4.3-25. TDS CONCENTRATIONS FOR WELLS C2, C6, C9 AND C12.

4.3-46

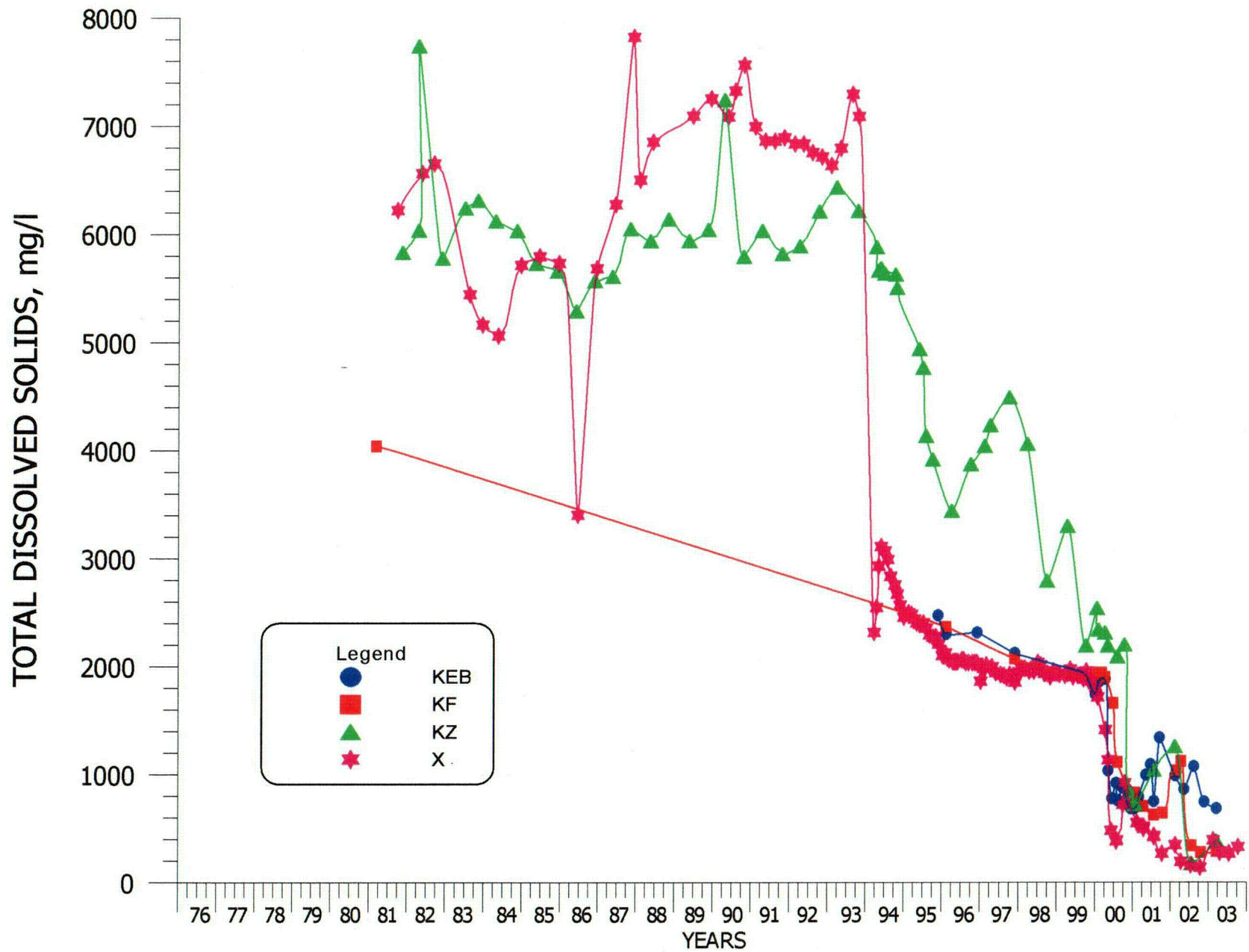


FIGURE 4.3-26. TDS CONCENTRATIONS FOR WELLS KEB, KF, KZ AND X.

4.3-47

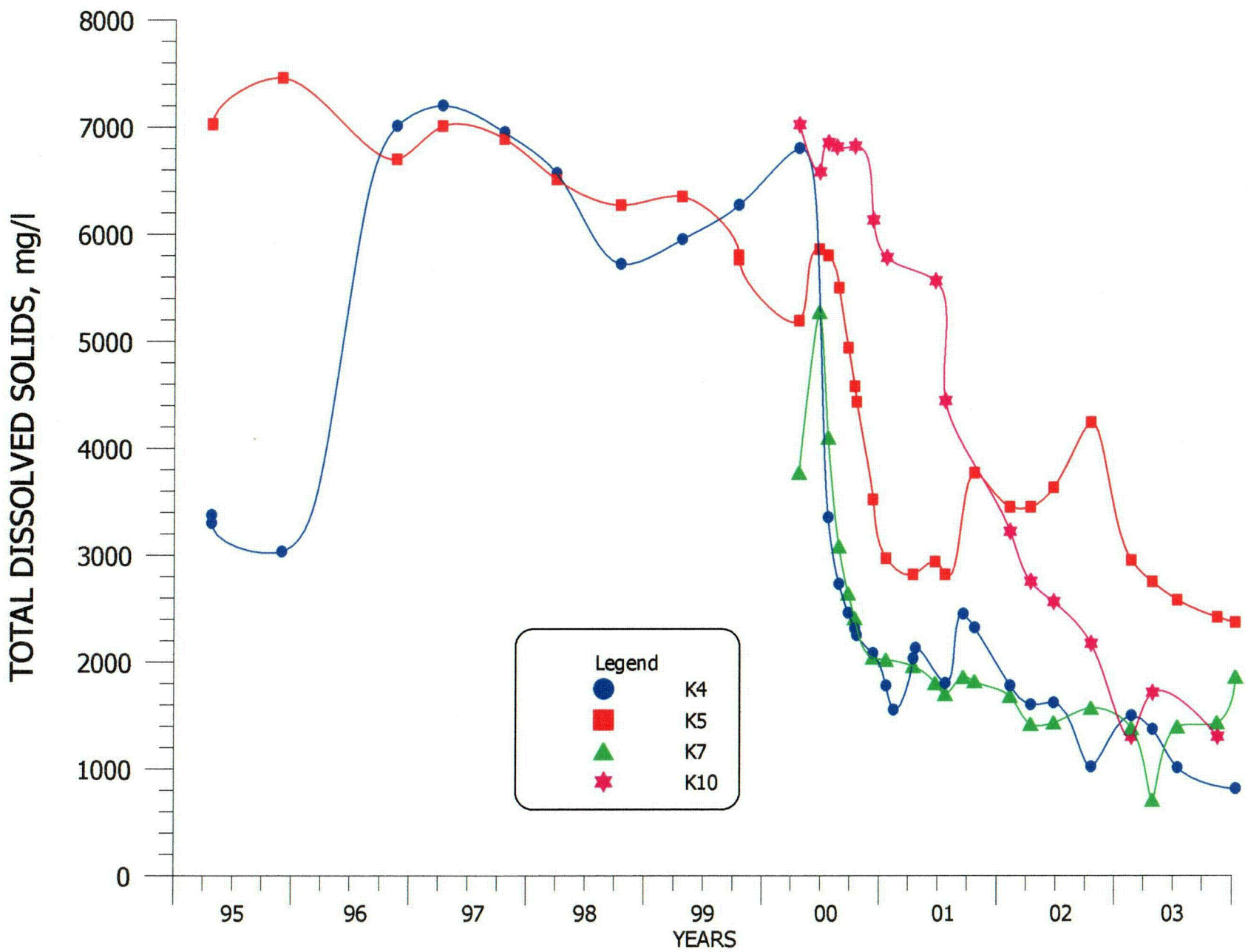


FIGURE 4.3-27. TDS CONCENTRATIONS FOR WELLS K4, K5, K7 AND K10.

4.3-48

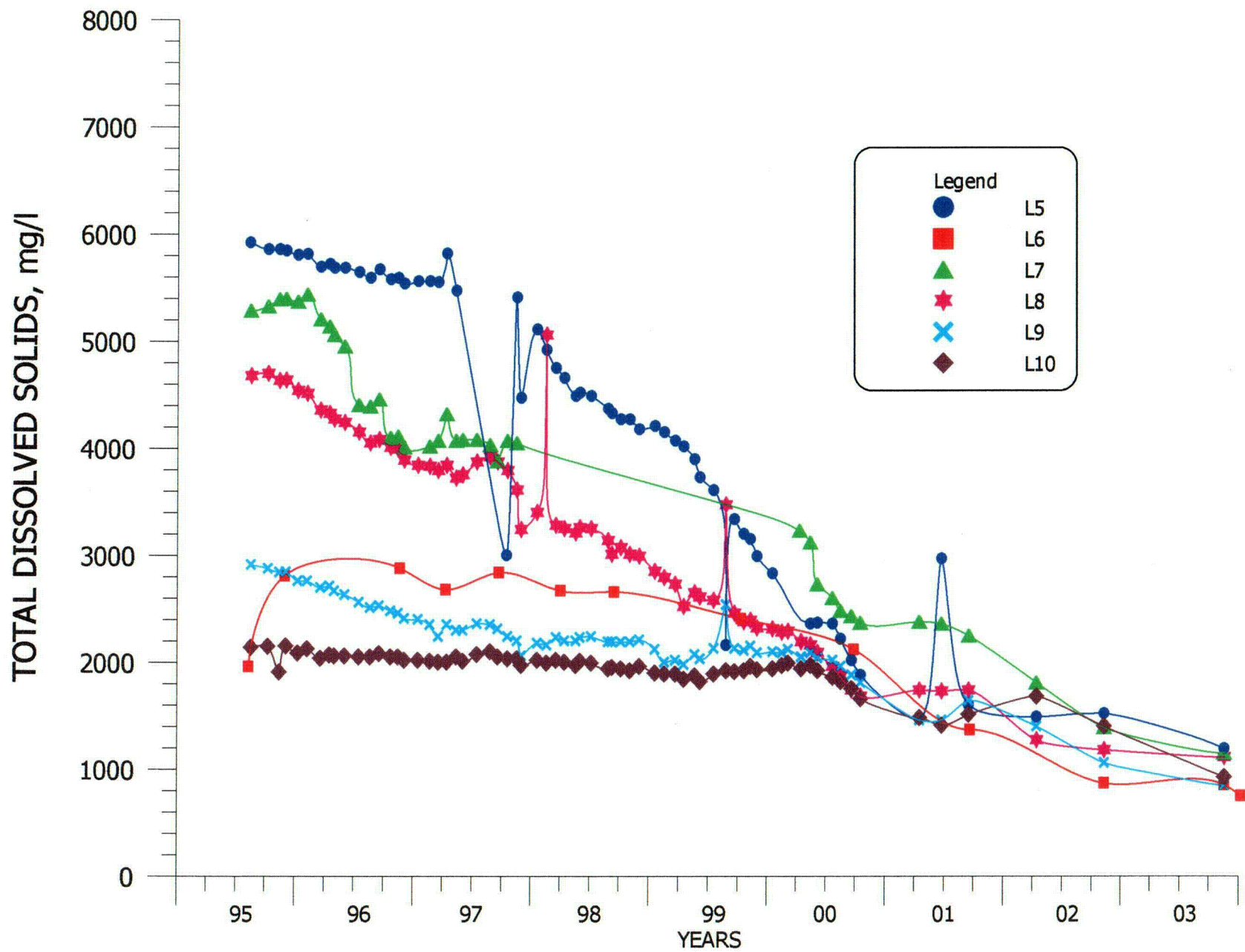


FIGURE 4.3-28. TDS CONCENTRATIONS FOR WELLS L5, L6, L7, L8, L9 AND L10.

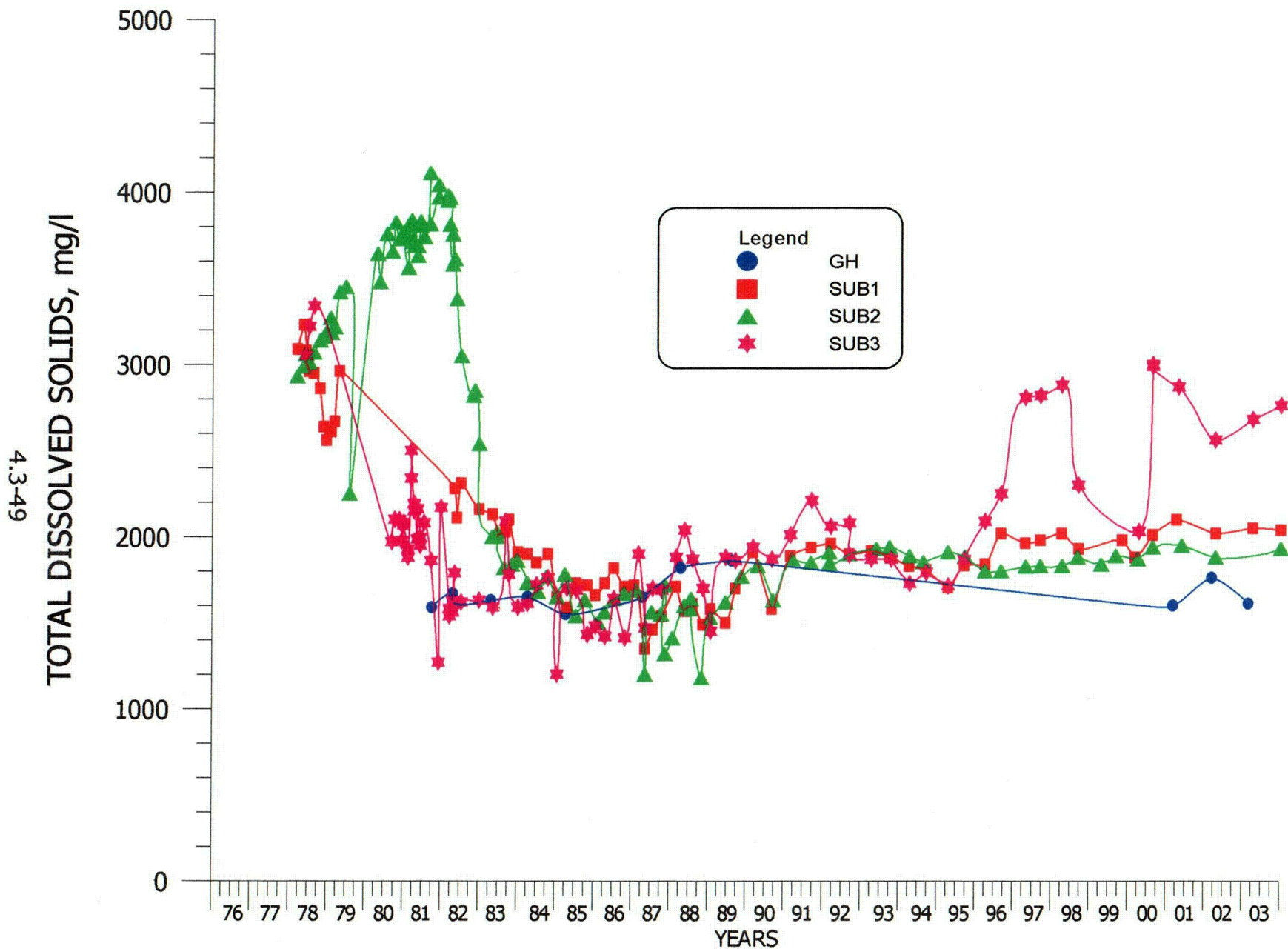


FIGURE 4.3-29. TDS CONCENTRATIONS FOR WELLS GH, SUB1, SUB2 AND SUB3.

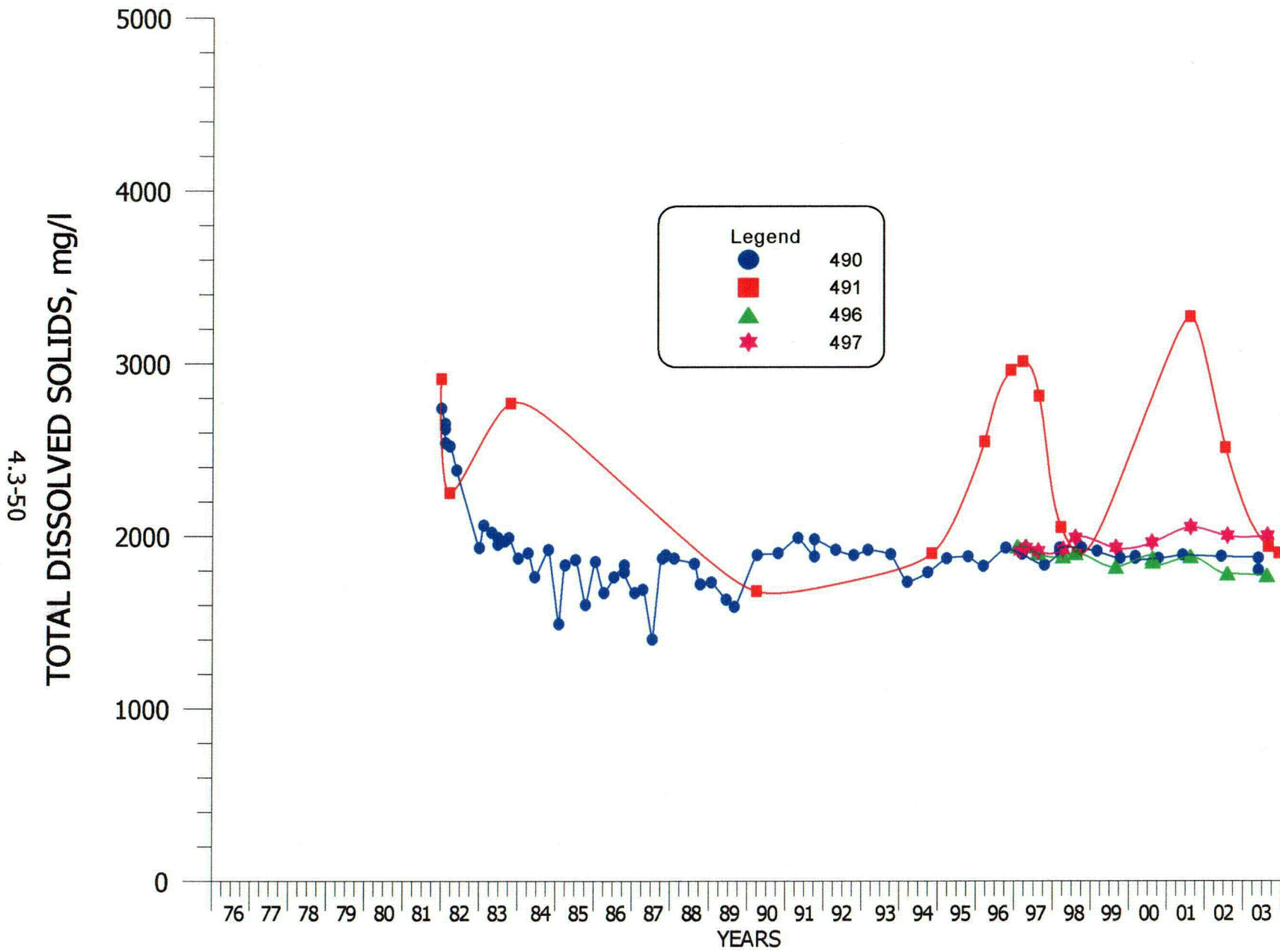


FIGURE 4.3-30. TDS CONCENTRATIONS FOR WELLS 490, 491, 496 AND 497.

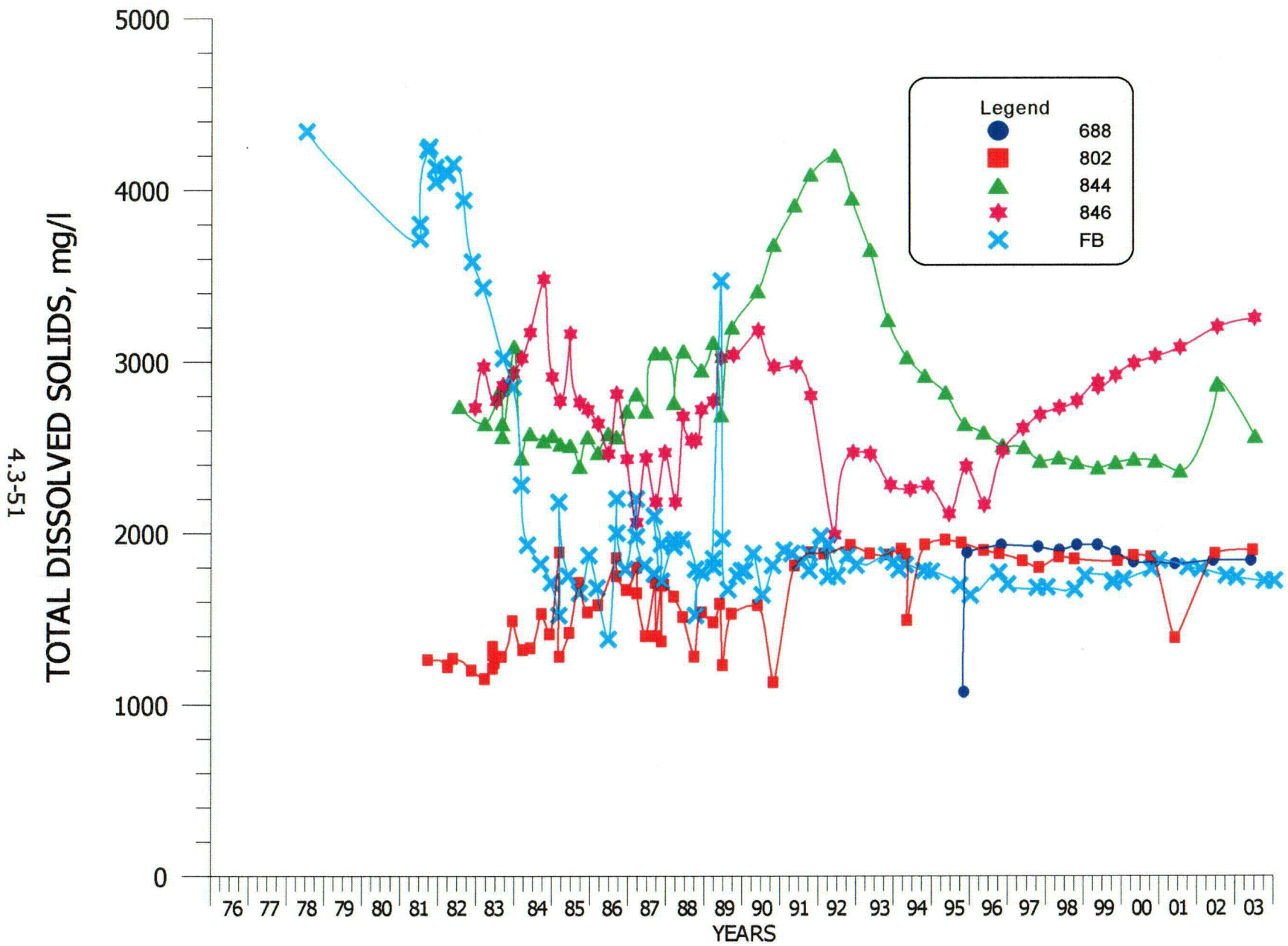


FIGURE 4.3-31. TDS CONCENTRATIONS FOR WELLS 688, 802, 844, 846 AND FB.

4.3-52

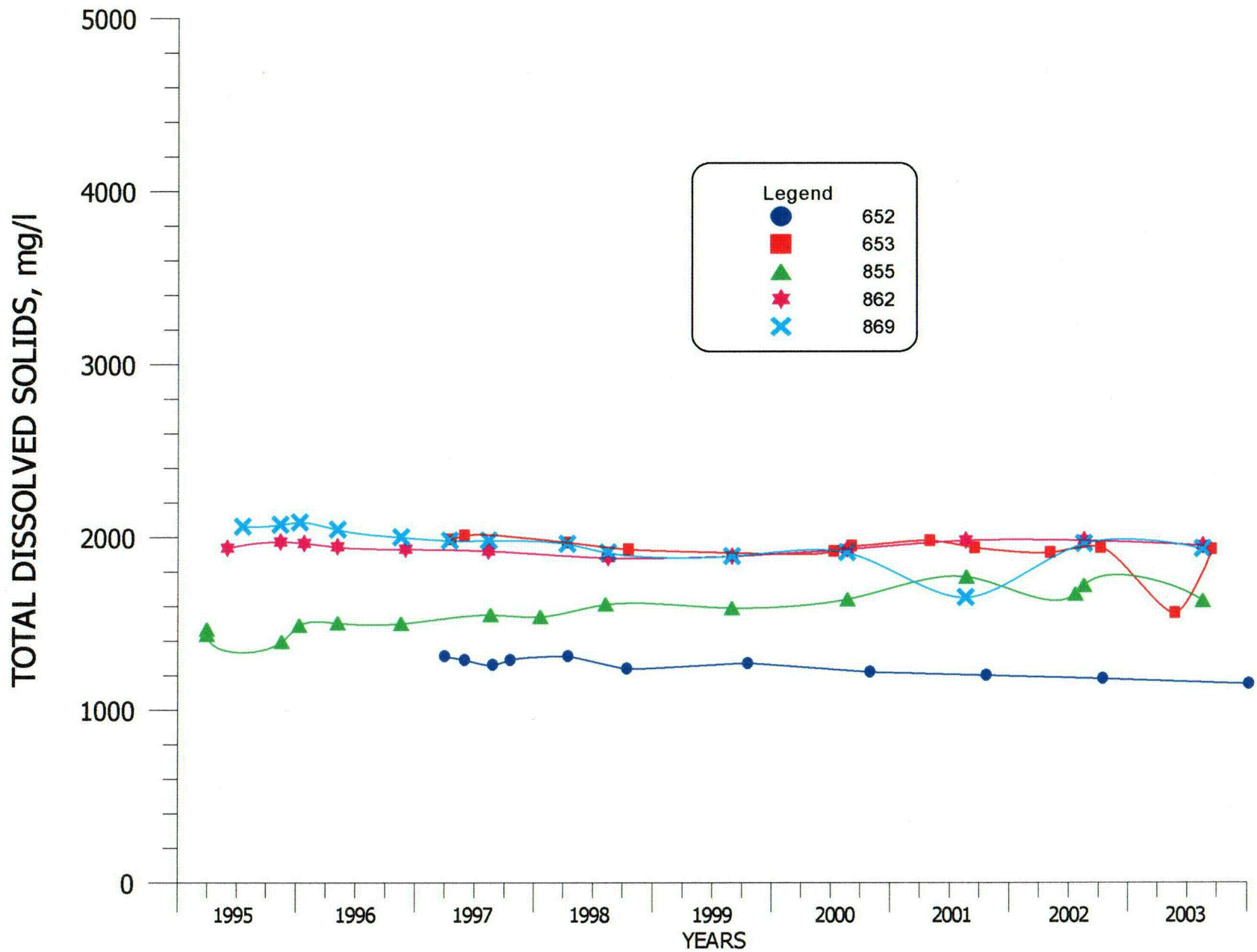


FIGURE 4.3-32. TDS CONCENTRATIONS FOR WELLS 652, 653, 855, 862 AND 869.

4.3-53

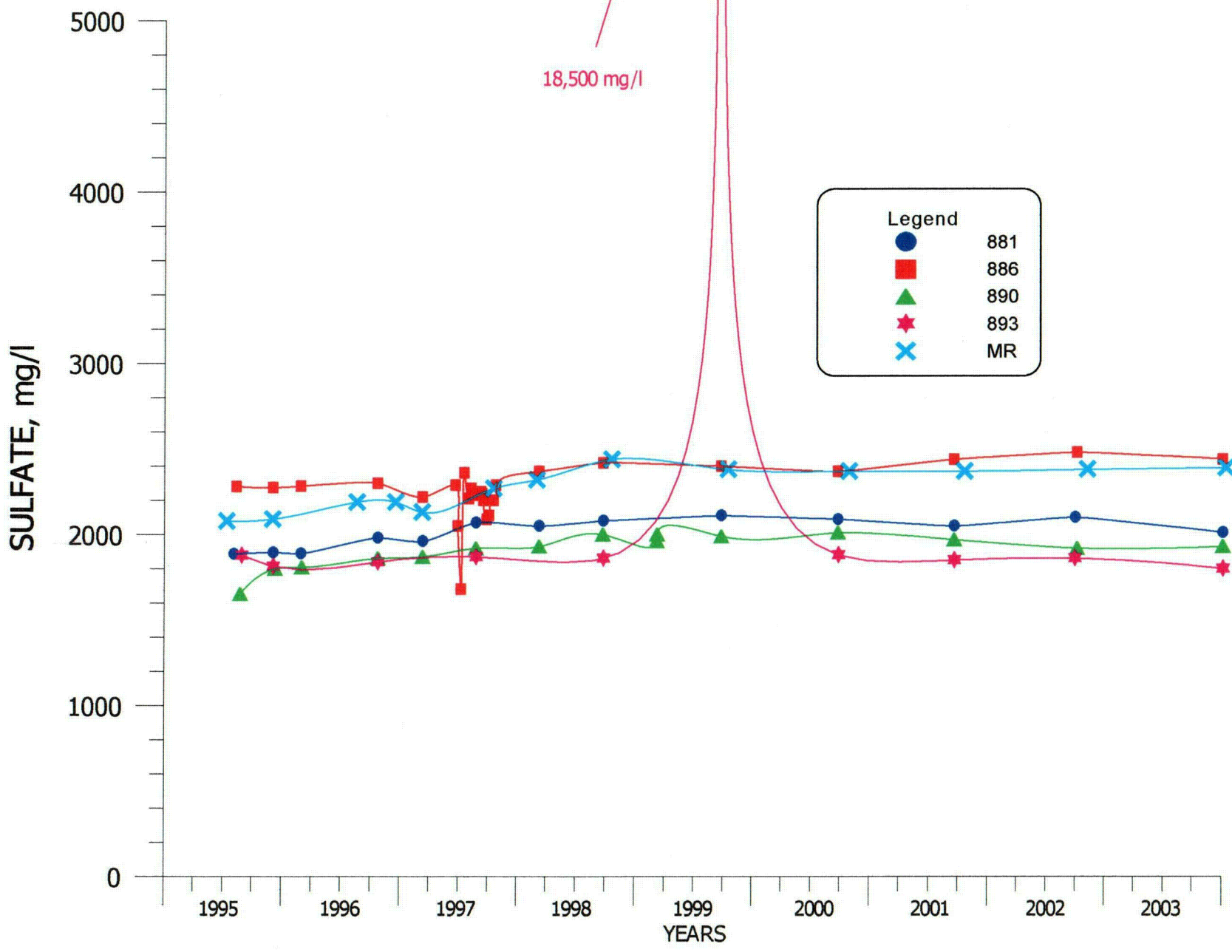


FIGURE 4.3-33. TDS CONCENTRATIONS FOR WELLS 881, 886, 890, 893 AND MR.

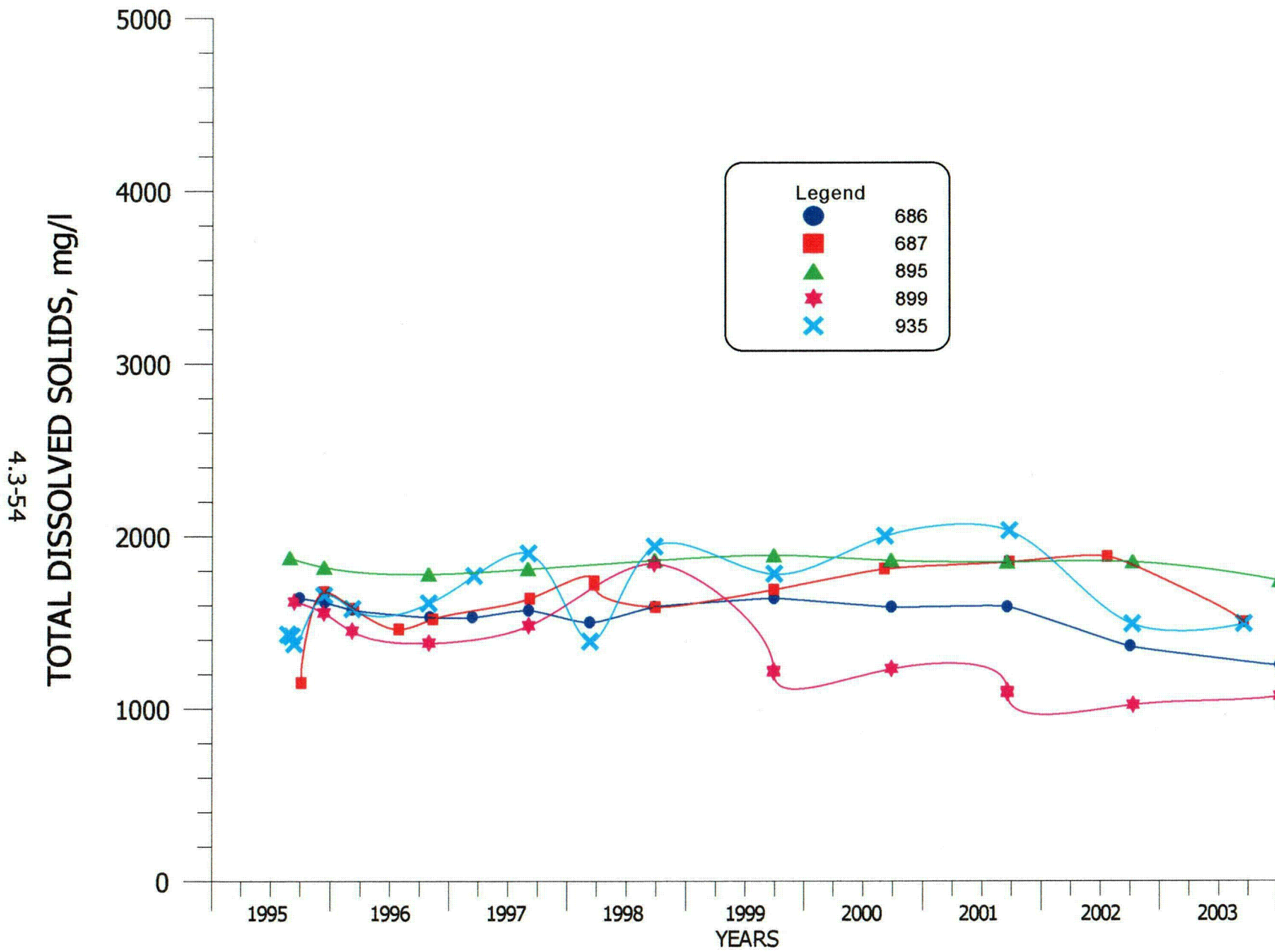


FIGURE 4.3-34. TDS CONCENTRATIONS FOR WELLS 686, 687, 895, 899 AND 935.

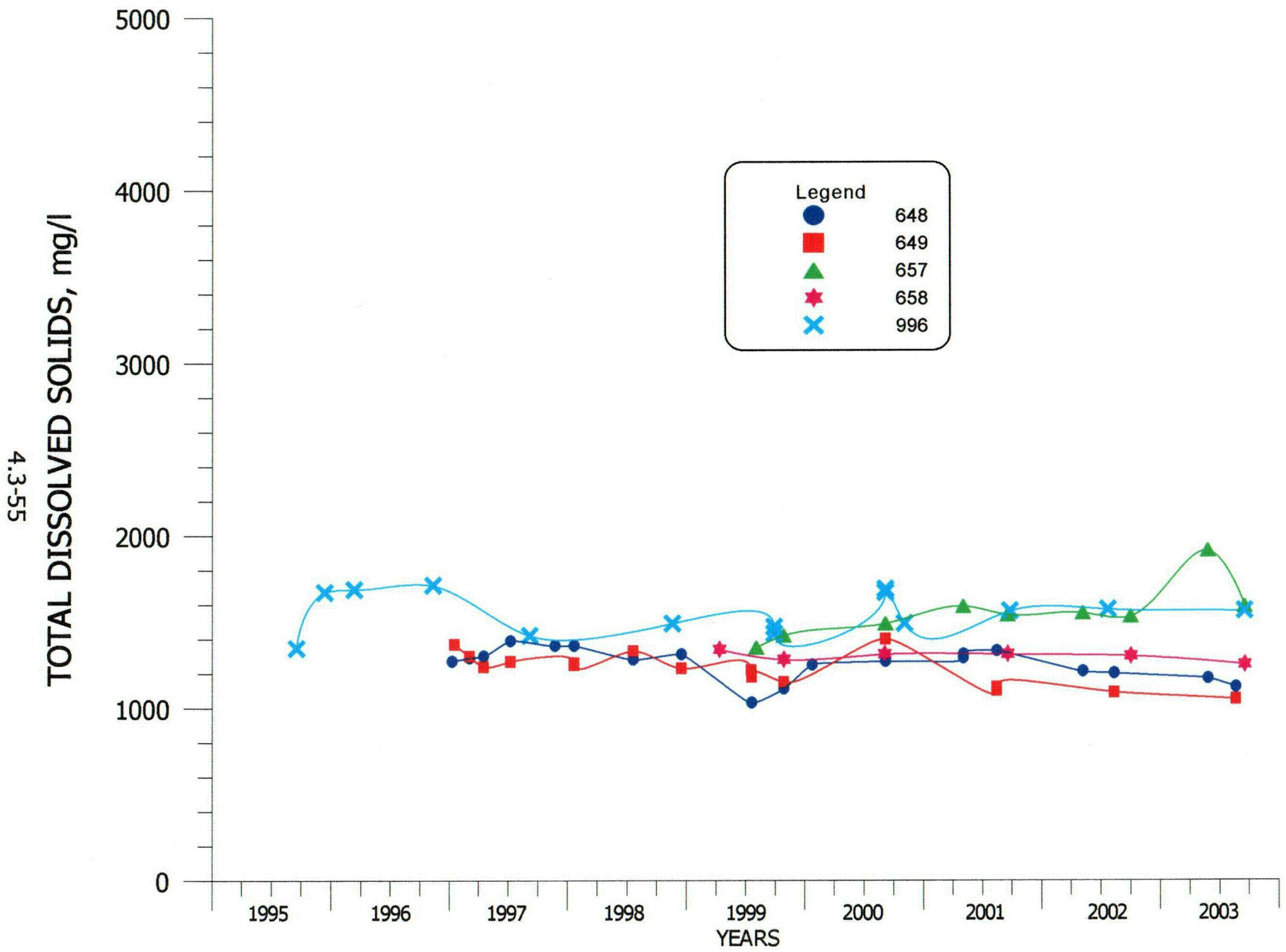


FIGURE 4.3-35. TDS CONCENTRATIONS FOR WELLS 648, 649, 657, 658 AND 996.