



444 South 16th Street Mall
Omaha NE 68102-2247

March 17, 2004
LIC-04-0041

U. S. Nuclear Regulatory Commission
ATTN: Document Control Desk
Washington, DC 20555

Reference: Docket No. 50-585

SUBJECT: Transmittal of Changes to Emergency Plan Implementing Procedures (EPIP)

In accordance with 10 CFR 50.54(q), 10 CFR 50, Appendix E, Section V, and 10 CFR 50.4(b)(5), please find EPIP change packages enclosed for the Document Control Desk (holder of Copy 165) and the NRC Region IV Plant Support Branch Secretary (holder of Copies 154 and 155).

The document update instructions and summary of changes are included on the Confirmation of Transmittal form (Form EP-1) attached to each controlled copy change package. Please return the Confirmation of Transmittal forms by May 7, 2004.

The revised documents included in the enclosed package are:
EPIP Index page 1 of 2 issued 03/11/04
EPIP-EOF-7 R15 issued 03/11/04

If you have any questions regarding the enclosed changes, please contact Mr. Carl Simmons at (402) 533-6430.

Sincerely,

J. B. Herman
Manager - Nuclear Licensing

JBH/ckf

Enclosures

- c: NRC Region IV Plant Support Branch Secretary (2 sets)
Alan Wang, NRC Project Manager (w/o enclosures)
J. G. Kramer, NRC Senior Resident Inspector (w/o enclosures)
Emergency Planning Department (w/o enclosures)

A045

OMAHA PUBLIC POWER DISTRICT

Confirmation of Transmittal for
Emergency Planning Documents/Information

<input type="checkbox"/> Radiological Emergency Response Plan (RERP)	<input checked="" type="checkbox"/> Emergency Plan Implementing Procedures (EPIP)	<input type="checkbox"/> Emergency Planning Forms (EPF)
<input type="checkbox"/> Emergency Planning Department Manual (EPDM)	<input type="checkbox"/> Other Emergency Planning Document(s)/ Information	

Transmitted to:

Name: Document Control Desk Copy No: 165 Date: _____
Plant Support Branch Secretary Copy No: 154
Plant Support Branch Secretary Copy No: 155

The following document(s) / information are forwarded for your manual:

REMOVE SECTION

EPIP Index page 1 of 2 issued 03/02/04
EPIP-EOF-7 R14 issued 04/15/03

INSERT SECTION

EPIP Index page 1 of 2 issued 03/11/04
EPIP-EOF-7 R15 issued 03/11/04

Summary of Changes:

EPIP-EOF-7 was revised to delete the reference to sub-areas 1-10 in note and in recommended PAR section because OPPD does not recommend PARs based on sub-areas.



Supervisor - Emergency Planning

I hereby acknowledge receipt of the above documents/information and have included them in my assigned manuals.

Signature: _____

Date: _____

Please sign above and return by to: 05/07/04

Beth Nagel
Fort Calhoun Station, FC-2-1
Omaha Public Power District
444 South 16th Street Mall
Omaha, NE 68102-2247

NOTE: If the document(s)/information contained in this transmittal is no longer requested or needed by the recipient, or has been transferred to another individuals, please fill out the information below.

☐ Document(s)/Information No Longer Requested/Needed

☐ Document(s)/Information Transferred to:

Name: _____

Mailing Address: _____

Document	Document Title	Revision/Date
<u>EPIP-OSC-1</u>	Emergency Classification	R35 05-02-02
<u>EPIP-OSC-2</u>	Command and Control Position Actions/Notifications	R42 05-28-03a
<u>EPIP-OSC-9</u>	Emergency Team Briefings	R7 12-09-99
<u>EPIP-OSC-15</u>	Communicator Actions	R22 10-24-00a
<u>EPIP-OSC-21</u>	Activation of the Operations Support Center	R13 03-02-04
<u>EPIP-TSC-1</u>	Activation of the Technical Support Center	R25 03-02-04
<u>EPIP-TSC-2</u>	Catastrophic Flooding Preparations (R0 03-22-95) DELETED (05-09-95) REINSTATED	R5 11-13-03
<u>EPIP-TSC-8</u>	Core Damage Assessment	R15 10-28-03
<u>EPIP-EOF-1</u>	Activation of the Emergency Operations Facility	R13 10-29-02
<u>EPIP-EOF-3</u>	Offsite Monitoring	R19 07-29-03
<u>EPIP-EOF-6</u>	Dose Assessment	R32 01-23-02a
<u>EPIP-EOF-7</u>	Protective Action Guidelines	R15 03-11-04
<u>EPIP-EOF-10</u>	Warehouse Personnel Decontamination Station Operation	R10 01-13-00a
<u>EPIP-EOF-11</u>	Dosimetry Records, Exposure Extensions and Habitability	R20 07-02-03
<u>EPIP-EOF-19</u>	Recovery Actions	R8 07-17-03
<u>EPIP-EOF-21</u>	Potassium Iodide Issuance	R4 11-07-00
<u>EPIP-EOF-23</u>	Emergency Response Message System	R5 10-12-99
<u>EPIP-EOF-24</u>	EOF Backup Alert Notification System Activation	R3 09-09-99
<u>EPIP-RR-11</u>	Technical Support Center Director Actions	R14 02-29-00a
<u>EPIP-RR-13</u>	Reactor Safety Coordinator Actions	R14 12-09-99a
<u>EPIP-RR-17</u>	TSC Security Coordinator Actions	R15 12-10-02a
<u>EPIP-RR-17A</u>	TSC Administrative Logistics Coordinator Actions	R20 11-07-02a

Fort Calhoun Station
Unit No. 1

Distribution Authorized

This procedure does not contain any proprietary information, or such information has been censored. This issue may be released to the public document room. Proprietary information includes personnel names, company telephone numbers, and any information, which could impede emergency response.

EPIP-EOF-7

EMERGENCY PLAN IMPLEMENTING PROCEDURE

Title: PROTECTIVE ACTION GUIDELINES

FC-68 Number: EC 33825

Reason for Change: Delete reference to sub-areas 1-10 in note and in recommended PAR section, because OPPD does not recommend PAR's based on sub-areas.

Requestor: Mark Reller

Preparer: Mark Reller

PROTECTIVE ACTION GUIDELINES

1. PURPOSE

- 1.1 This procedure outlines the guidelines for determining Protective Action Recommendations (PARs).

2. REFERENCES/COMMITMENT DOCUMENTS

- 2.1 "Manual of Protective Action Guides and Protective Actions for Nuclear Incidents", EPA 400-R-92-001, May 1992
- 2.2 "Response Technical Manual" NUREG/BR-0150, USNRC, Volume 1, Rev. 4, March 1996
- 2.3 "Protective Measures Basis Document", CHP-00-038, September 28, 2000

3. DEFINITIONS

None

4. PREREQUISITES

- 4.1 An emergency has been declared per EPIP-OSC-1.

5. PROCEDURE

NOTE: When an Emergency Notification Form (FC-1188) is issued a Protective Action Recommendation (PAR) must be made. A PAR is considered developed when the FC-1188 is signed.

NOTE: For a Notification of Unusual Event (NOUE) or Alert the PAR is typically "None".

NOTE: At a General Emergency the minimum PAR is the evacuation of a 2 mile radius (all sectors) around the plant.

NOTE: Do not delay required notifications while awaiting dose assessment projections or field team results.

- 5.1 PAR Determinations are made as follows:

- 5.1.1 Using Attachments 6.1 and 6.2, determine the appropriate PAR.

NOTE: Adjustments to the downwind sectors selected using the following methods may be needed based on previously affected sectors and meteorological conditions such as wind shifts.

5.1.2 To determine downwind sectors:

- A. IF a release is in progress **AND** EAGLE dose assessment results are available, use the sectors in the EAGLE dose assessment results.

OR

- B. IF a release is in progress **AND** the EAGLE dose assessment results are not available, use the Isopleths wheel.

OR

- C. IF there is no release, use the Isopleths wheel.

5.1.3 Document on the PAR worksheet, the PAR and the reasons, if any, for sector differences from or additions to the above method used.

5.2 Record PAR(s) on Emergency Notification Form (FC-1188).

5.3 PAR Preparation and Review

5.3.1 In the Control Room

- A. Operations personnel normally prepare PAR(s) based on plant conditions.
- B. The dose assessment position normally prepares PAR(s) based on radiological conditions.

5.3.2 In the Technical Support Center (TSC)

- A. The Operations Liaison Group or the Site Director normally prepares PAR(s) based on plant conditions.
- B. The TSC Protective Measures Coordinator normally prepares PAR(s) based on radiological conditions.

5.3.3 In the Emergency Operation Facility (EOF)

- A. The Protective Measures Manager's Group normally prepares PAR(s), with assistance from the Operations Liaison Group.

5.3.3 B. The Protective Measures Manager normally reviews PAR(s).

5.4 The Command and Control Position must approve all PAR(s).

NOTE: State and county officials are responsible for the final decision on what Protective Actions are issued to the public.

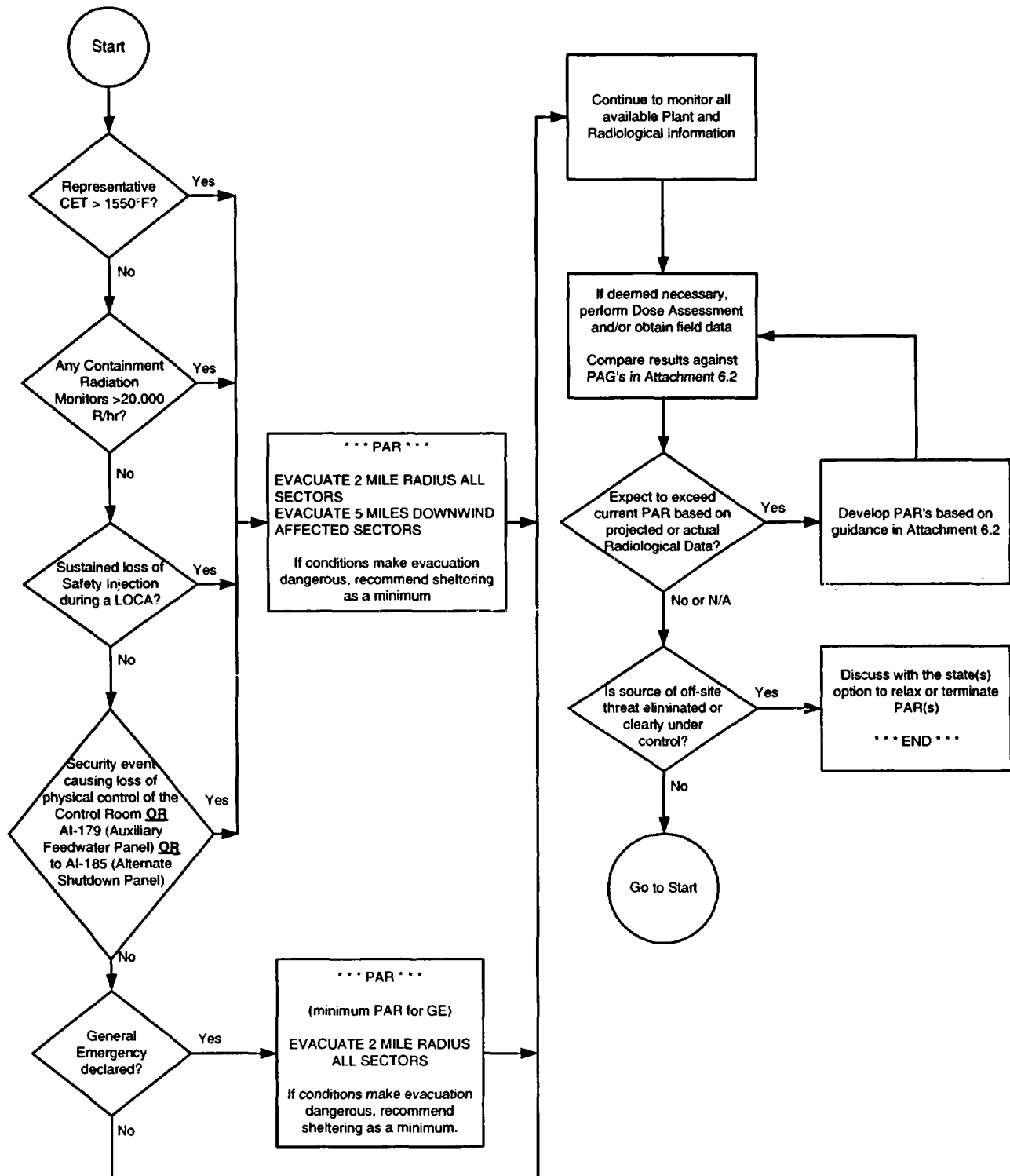
5.5 Transmit the PARs to the state and counties per EPIP-OSC-2 and EPIP-OSC-15.

6. ATTACHMENTS

6.1 Protective Action Recommendations Flowchart Based on Plant Conditions and Radiological Data

6.2 Protective Action Recommendations Based on Dose Assessment/Field Team Radiological Data

Attachment 6.1 - Protective Action Recommendations Flowchart
Based on Plant Conditions and Radiological Data



Attachment 6.2 - Protective Action Recommendations Based on
Dose Assessment/Field Team Radiological Data

Early Phase (Plume Phase):

Projected Dose	Protective Action Recommendation (PAR)
<1 rem TEDE <5 rem CDE (thyroid)	None (NO PAR REQUIRED) and continue to monitor radiological conditions
≥ 1 rem TEDE ≥ 5 rem CDE (thyroid)	Evacuate Shelter, if it will provide protection equal to or greater than evacuation up to 10 rem (NOTE)
≥ 50 rem SDE (skin)	Evacuate

NOTE: Sheltering may be preferable to evacuation as a protective action in some situations. Because of the higher risk associated with evacuation of some special groups in the population (e.g. those who are not readily mobile), sheltering may be the preferred alternative for such groups as a protective action at projected doses up to 5 rem TEDE. In addition, under unusually hazardous environmental conditions, use of sheltering up to 5 rem TEDE to the general population (and up to 10 rem to special groups) may be justified.

For example, situations when evacuation may not be appropriate at 1 rem TEDE include: (1) the presence of severe weather; (2) competing disasters; (3) institutionalized people who are not readily mobile; and (4) local physical factors which impede evacuation.