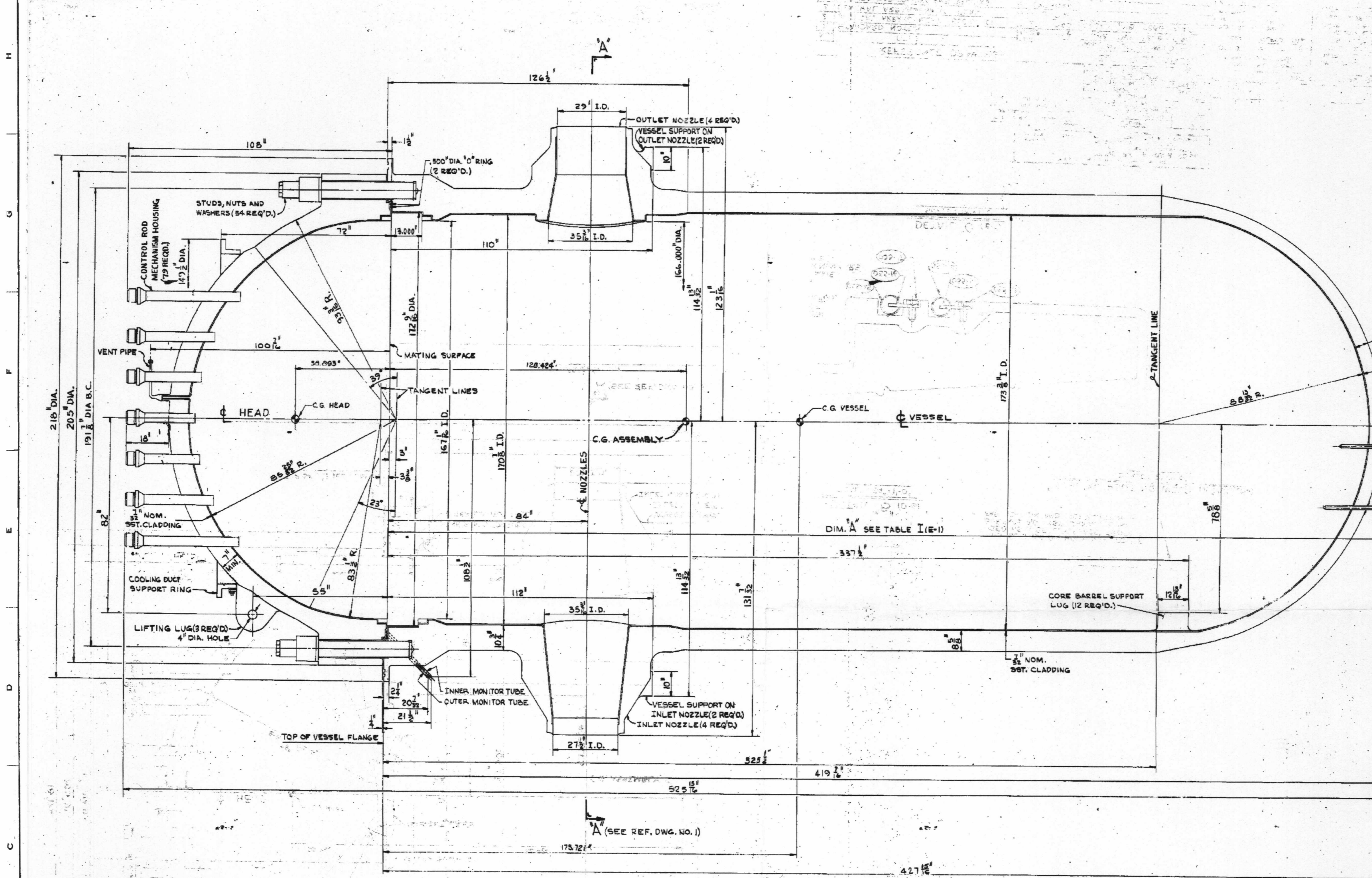


E-233-040



REV	NO.	DESCRIPTION	DATE	APPROVED
1	0-0	REVISED NO. REQ'D FROM 77 TO 78 ON THE CONTR'L ROD MECHANISM HOUSING	7-5-67	B.M.
2	0-1	ADDED C.G. OF HEAD & VESSEL	7-5-67	
3	0-2	ADDED NO. 1 PENETRATION AND DIST. FROM BOT. OF NO. 1 PENET. TO TOP OF VESSEL FLANGE.	7-5-67	
4	0-3	ADDED HEIGHTS	7-5-67	
5	0-4	REVISED DIM. 'A' IN TABLE I	10-22-67	
6	0-5	REVISED C.G. OF ASSEMBLY	5-25-68	
7	0-6	REVISED VESSEL C.G.	1-12-68	
8	0-7	CONTROL ROD HOUSINGS WAS 78	1-12-68	
9	0-8	DELETED CLOSURE HEAD INSULATION	1-12-68	

PENET. NO.	DIM. 'A'
1	426 7/8"
2	426 7/8"
3	426 7/8"
4	426 7/8"
5	426 7/8"
6	426 7/8"
7	426 7/8"
8	426 7/8"
9	426 7/8"
10	426 7/8"
11	426 7/8"
12	426 7/8"
13	426 7/8"
14	426 7/8"
15	426 7/8"
16	426 7/8"
17	426 7/8"
18	426 7/8"
19	426 7/8"
20	426 7/8"
21	426 7/8"
22	426 7/8"
23	426 7/8"
24	426 7/8"
25	426 7/8"
26	426 7/8"
27	426 7/8"
28	426 7/8"
29	426 7/8"
30	426 7/8"
31	426 7/8"
32	426 7/8"
33	426 7/8"
34	426 7/8"
35	426 7/8"
36	426 7/8"
37	426 7/8"
38	426 7/8"
39	426 7/8"
40	426 7/8"
41	426 7/8"
42	426 7/8"
43	426 7/8"
44	426 7/8"
45	426 7/8"
46	426 7/8"
47	426 7/8"
48	426 7/8"
49	426 7/8"
50	426 7/8"
51	426 7/8"
52	426 7/8"
53	426 7/8"
54	426 7/8"
55	426 7/8"
56	426 7/8"
57	426 7/8"
58	426 7/8"
59	426 7/8"
60	426 7/8"

COMPONENT	WEIGHT
VESSEL	687,204
CLOSURE HEAD	153,805
STUD, NUT & WASHER	36,420
TOTAL	877,429

SH	Drawing	Title
1	E233-040	General Arrangement Elevation
2	E233-041	General Arrangement Plan
3	E233-042	Pressure Vessel Forming & Welding
4	E233-043	Bottom Head Forming & Welding
5	E233-044	Pressure Vessel Final Machining
6	E233-045	Nozzle Details
7	E233-046	Closure Head Forming & Welding
8	E233-047	Closure Head Machining
9	E233-048	Closure Head Assembly
10	E233-049	Stud, Nut and Washer Details
11	E233-050	Miscellaneous Attachments
12	E233-051	DRM Housing Details
13	E233-052	Control Rod Penetration Details
14	E233-053	Alignment Pins Assy & Details
15	E233-054	Thru Caps & Misc Details
16	E233-055	Miscellaneous Details
17	E233-056	Instrumentation Penetration Assy and Detail - Bottom Head
18	E233-057	Cooling Duct Support Ring

FORM 1
VENOR INFORMATION

SALEM-1

REACTOR VESSEL MAP DATA EC

COMBUSTION ENGS

CONTRACT # 3266

DATE: 1-12-68

SCALE: 1/4" = 1'-0"

NO.	TITLE	DWG. NO.
1	GENERAL ARRANGEMENT - PLAN	E233-041
2	PRESSURE VESSEL FINAL MACHINING	E233-044
3	CLOSURE HEAD MACHINING	E233-047
4	CLOSURE HEAD ASSEMBLY	E233-048

NO.	DESCRIPTION	QTY
1
2
3
4
5
6
7
8
9
10
11
12
13
14
15
16
17
18
19
20
21
22
23
24
25
26
27
28
29
30
31
32
33
34
35
36
37
38
39
40
41
42
43
44
45
46
47
48
49
50
51
52
53
54
55
56
57
58
59
60

COMBUSTION ENGINEERING, INC.
CHATTANOOGA DIVISION

GENERAL ARRANGEMENT-ELEVATION

FOR WESTINGHOUSE ELECTRIC CORP.

SCALE: 1/4" = 1'-0"

DATE: 1-12-68

APPROVED: [Signature]

CONTRACT 3266

OUTSTANDING CHANGES MUST BE ATTACHED FOR WORKING COPY

D-03