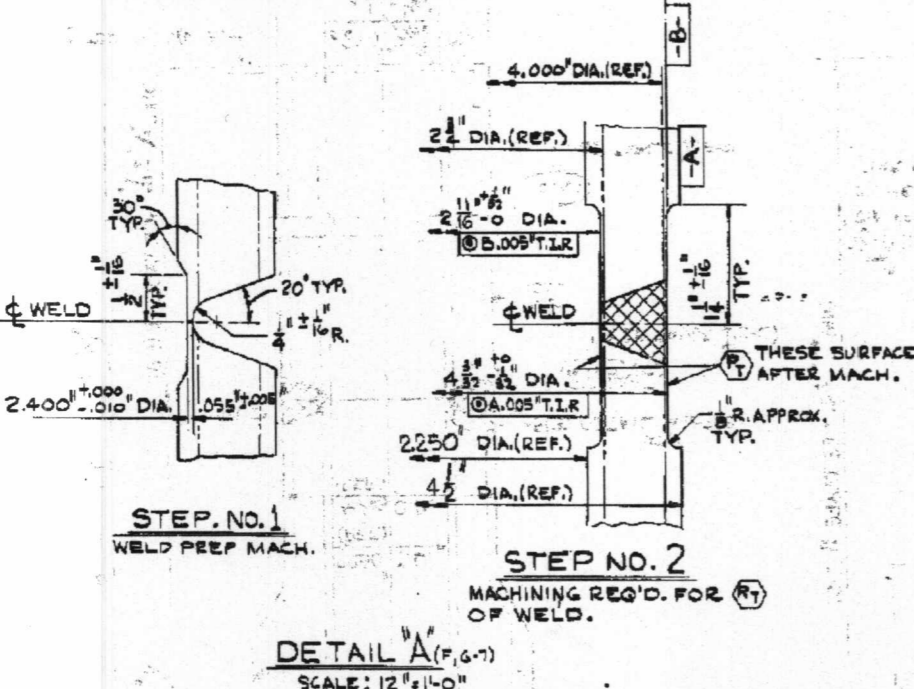


(051-01) THRU (051-16) HOUSING ASSEMBLY
TYPICAL CONTROL ROD HOUSING WELDING ASSY.
SCALE: 6" = 1'-0"

TABLE I

REV. NO.	PC. NO.	WELD NO.	DIM. "A"	DIM. "B"
051-01	051-19	1-051	16 1/2"	26 1/2"
051-02	051-20	2-051-A-D	18 1/2"	30 1/2"
051-03	051-21	3-051-A-D	18 1/2"	30 1/2"
051-04	051-22	4-051-A-D	20 1/2"	32 1/2"
051-05	051-23	5-051-A-H	21 1/2"	33 1/2"
051-06	051-24	6-051-A-D	24 1/2"	36 1/2"
051-07	051-25	7-051-A-D	25 1/2"	37 1/2"
051-08	051-26	8-051-A-H	26 1/2"	38 1/2"
051-09	051-27	9-051-A-H	29 1/2"	40 1/2"
051-10	051-28	10-051-A-D	32 1/2"	44 1/2"
051-11	051-29	11-051-A-H	33 1/2"	45 1/2"
051-12	051-30	12-051-A-D	35 1/2"	47 1/2"
051-13	051-31	13-051-A-H	37 1/2"	49 1/2"
051-14	051-32	14-051-A-D	43 1/2"	54 1/2"
051-16	051-34	16-051-A-F	46 1/2"	59 1/2"



(051-01) THRU (051-16) HOUSING ASSEMBLY (SEE NOTE #5)
TYPICAL CONTROL ROD HOUSING & MACHINING ASSY.
SCALE: 6" = 1'-0"

TABLE III

REV. NO.	PC. NO.	WELD NO.	DIM. "A"	DIM. "B"
051-01	051-19	1-051	16 1/2"	26 1/2"
051-02	051-20	2-051-A-D	18 1/2"	30 1/2"
051-03	051-21	3-051-A-D	18 1/2"	30 1/2"
051-04	051-22	4-051-A-D	20 1/2"	32 1/2"
051-05	051-23	5-051-A-H	21 1/2"	33 1/2"
051-06	051-24	6-051-A-D	24 1/2"	36 1/2"
051-07	051-25	7-051-A-D	25 1/2"	37 1/2"
051-08	051-26	8-051-A-H	26 1/2"	38 1/2"
051-09	051-27	9-051-A-H	29 1/2"	40 1/2"
051-10	051-28	10-051-A-D	32 1/2"	44 1/2"
051-11	051-29	11-051-A-H	33 1/2"	45 1/2"
051-12	051-30	12-051-A-D	35 1/2"	47 1/2"
051-13	051-31	13-051-A-H	37 1/2"	49 1/2"
051-14	051-32	14-051-A-D	43 1/2"	54 1/2"
051-16	051-34	16-051-A-F	46 1/2"	59 1/2"

GENERAL NOTES

- FOR STANDARD NOTES. SEE REF. DWS. NO. 4.
- SIZES IN DIM. ARE FINISHED SIZES. NO ALLOWANCE MADE FOR FABRICATION OR WELD SHRINKAGE, UNLESS NOTED.
- DOUBLE ARROW INDICATES DIMENSION TO GIVEN REFERENCE LINE.
- REFERENCE (REF.) DIMENSIONS ARE FOR INFORMATION ONLY, DO NOT USE FOR FABRICATION.
- AFTER MACHINING AND PRIOR TO CHROME PLATING BY INSPECT EACH HOUSING ASSY OVER THE OUTSIDE SURFACES TO M&P SPEC. 2.4.3.9(C).

REFERENCE DRAWINGS

NO.	TITLE	DWG. NO.	REV.	DATE
1	CLOSURE HEAD MACHINING	E-233-047	1-051	11-05-58
2	CLOSURE HEAD ASSEMBLY	E-233-043	1-051	11-05-58
3	CONTROL ROD PENETRATION - DETAILS	E-233-062	15-051	11-05-58
4	STANDARD NOTES	A-250-552	14-051	11-05-58

WELD TABULATION CONT.

WELD NO.	DETAIL	WELD PROC.
1-051	WA-3226-051	
2-051	WA-3266-051	
3-051	A-0	
4-051	A-0	
5-051	A-H	
6-051	A-D	
7-051	A-D	
8-051	A-H	
9-051	A-H	
10-051	A-H	
11-051	A-H	
12-051	A-D	
13-051	A-H	
14-051	A-D	
16-051	A-F	

MATERIAL NOTES

"A" AS SUPPLEMENTED BY C.E. PURCHASE SPEC. P.8C(b).
"B" AS SUPPLEMENTED BY C.E. PURCHASE SPEC. P.45B(2)(a).

ITEM NO.	DESCRIPTION	QUANTITY	UNIT	REMARKS
051-34	TUBE 4 1/2" OD x 2250' I.D. x 48 1/2" LG.	2	INCONEL	58-167 "B"
051-16	FLANGE	1		
051-16	HOUSING ASSY.	1	EACH CONSISTING OF:	
051-32	TUBE 4 1/2" OD x 2250' I.D. x 48 1/2" LG.	2	INCONEL	58-167 "B"
051-16	FLANGE	1		
051-16	HOUSING ASSY.	1	EACH CONSISTING OF:	
051-31	TUBE 4 1/2" OD x 2250' I.D. x 37 1/2" LG.	2	INCONEL	58-167 "B"
051-16	FLANGE	1		
051-16	HOUSING ASSY.	1	EACH CONSISTING OF:	
051-30	TUBE 4 1/2" OD x 2250' I.D. x 37 1/2" LG.	2	INCONEL	58-167 "B"
051-16	FLANGE	1		
051-16	HOUSING ASSY.	1	EACH CONSISTING OF:	
051-29	TUBE 4 1/2" OD x 2250' I.D. x 34 1/2" LG.	2	INCONEL	58-167 "B"
051-16	FLANGE	1		
051-16	HOUSING ASSY.	1	EACH CONSISTING OF:	
051-28	TUBE 4 1/2" OD x 2250' I.D. x 32 1/2" LG.	2	INCONEL	58-167 "B"
051-16	FLANGE	1		
051-16	HOUSING ASSY.	1	EACH CONSISTING OF:	
051-27	TUBE 4 1/2" OD x 2250' I.D. x 29 1/2" LG.	2	INCONEL	58-167 "B"
051-16	FLANGE	1		
051-16	HOUSING ASSY.	1	EACH CONSISTING OF:	
051-26	TUBE 4 1/2" OD x 2250' I.D. x 26 1/2" LG.	2	INCONEL	58-167 "B"
051-16	FLANGE	1		
051-16	HOUSING ASSY.	1	EACH CONSISTING OF:	
051-25	TUBE 4 1/2" OD x 2250' I.D. x 25 1/2" LG.	2	INCONEL	58-167 "B"
051-16	FLANGE	1		
051-16	HOUSING ASSY.	1	EACH CONSISTING OF:	
051-24	TUBE 4 1/2" OD x 2250' I.D. x 24 1/2" LG.	2	INCONEL	58-167 "B"
051-16	FLANGE	1		
051-16	HOUSING ASSY.	1	EACH CONSISTING OF:	
051-23	TUBE 4 1/2" OD x 2250' I.D. x 21 1/2" LG.	2	INCONEL	58-167 "B"
051-16	FLANGE	1		
051-16	HOUSING ASSY.	1	EACH CONSISTING OF:	
051-22	TUBE 4 1/2" OD x 2250' I.D. x 21 1/2" LG.	2	INCONEL	58-167 "B"
051-16	FLANGE	1		
051-16	HOUSING ASSY.	1	EACH CONSISTING OF:	
051-21	TUBE 4 1/2" OD x 2250' I.D. x 19 1/2" LG.	2	INCONEL	58-167 "B"
051-16	FLANGE	1		
051-16	HOUSING ASSY.	1	EACH CONSISTING OF:	
051-20	TUBE 4 1/2" OD x 2250' I.D. x 18 1/2" LG.	2	INCONEL	58-167 "B"
051-16	FLANGE	1		
051-16	HOUSING ASSY.	1	EACH CONSISTING OF:	
051-19	TUBE 4 1/2" OD x 2250' I.D. x 17 1/2" LG.	2	INCONEL	58-167 "B"
051-16	FLANGE	1		
051-16	HOUSING ASSY.	1	EACH CONSISTING OF:	

APPROVED DATE
SCALE: 3/8" = 1'-0"