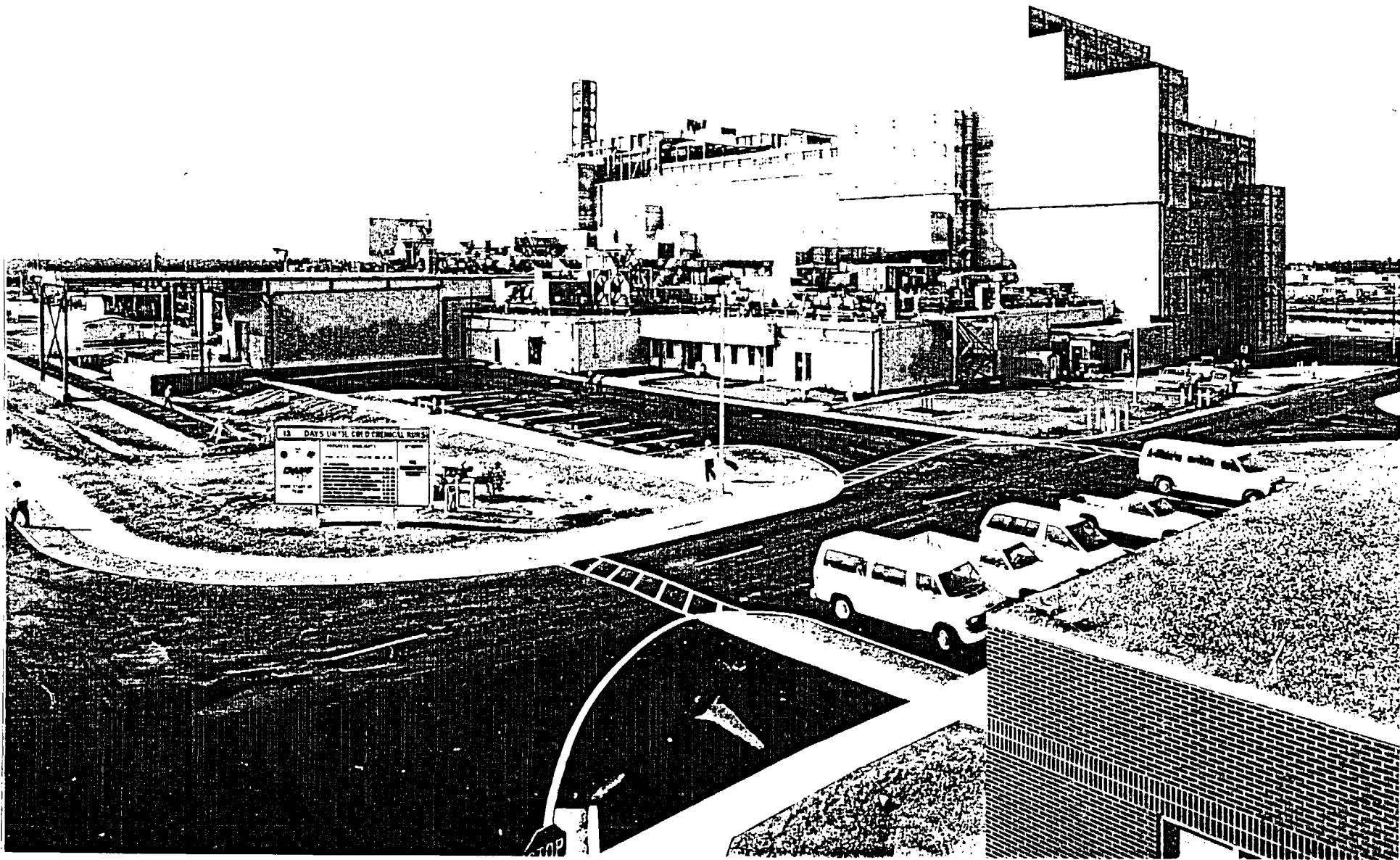
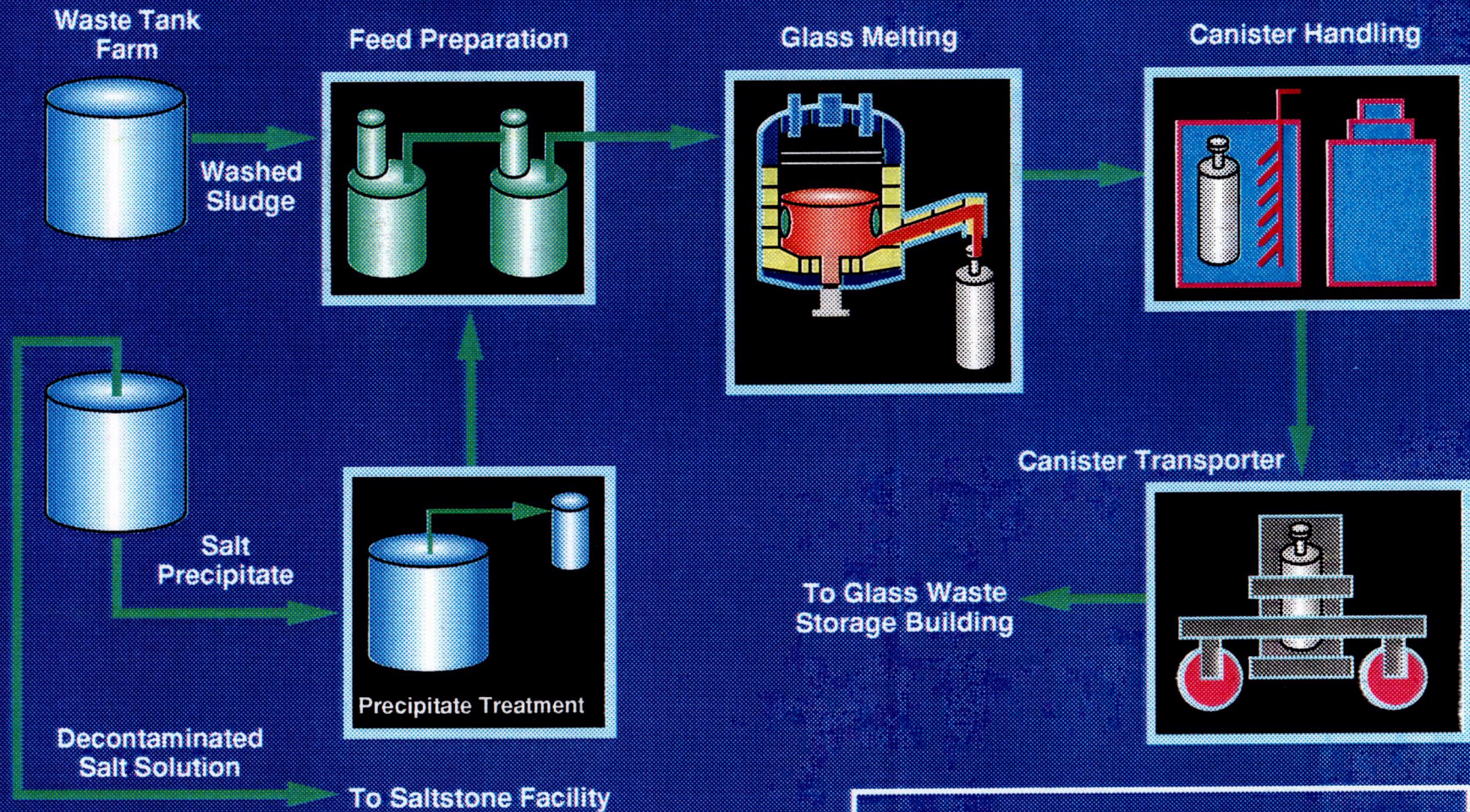


Defense Waste  
Processing Facility

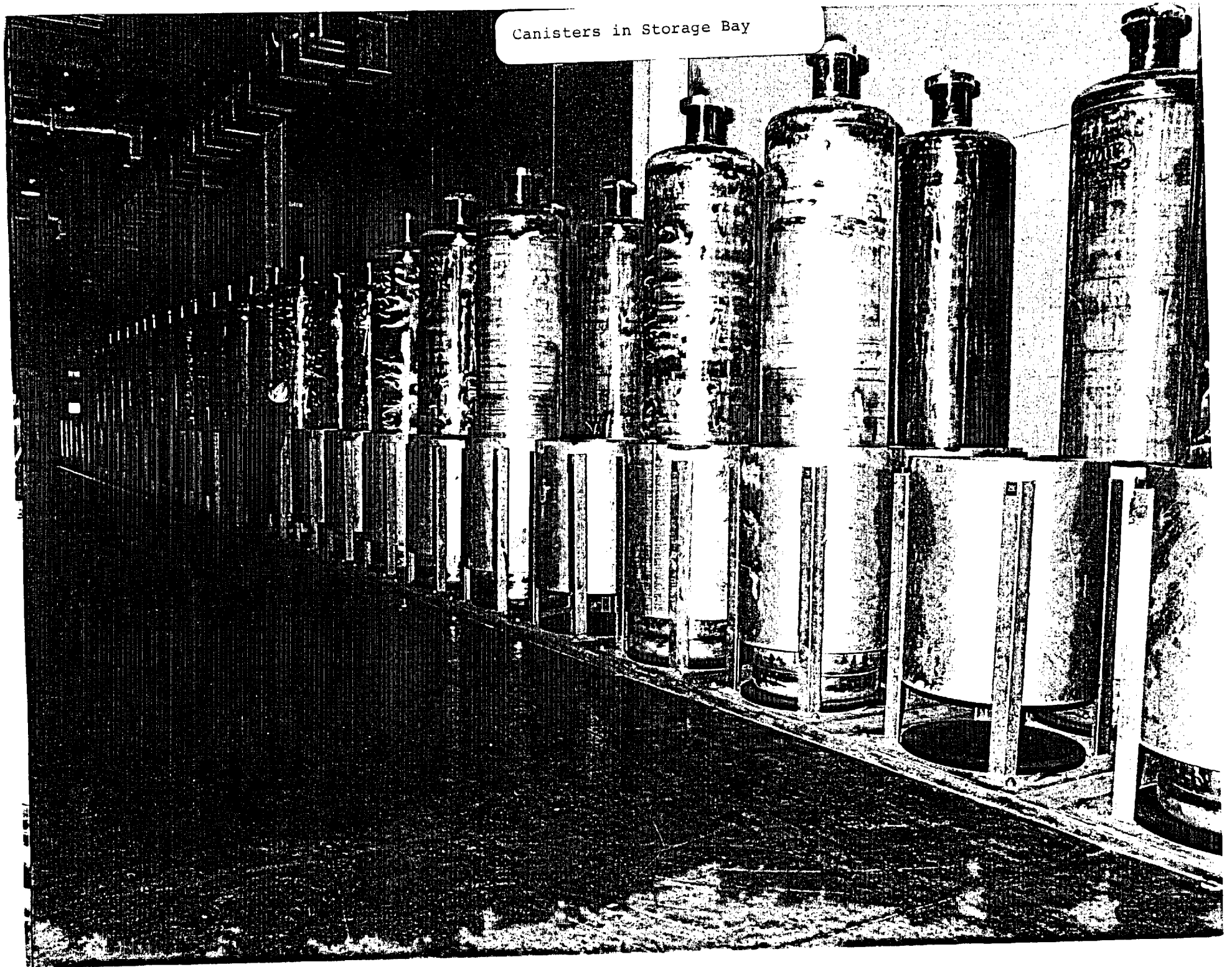


# DWPF Vitrification Process

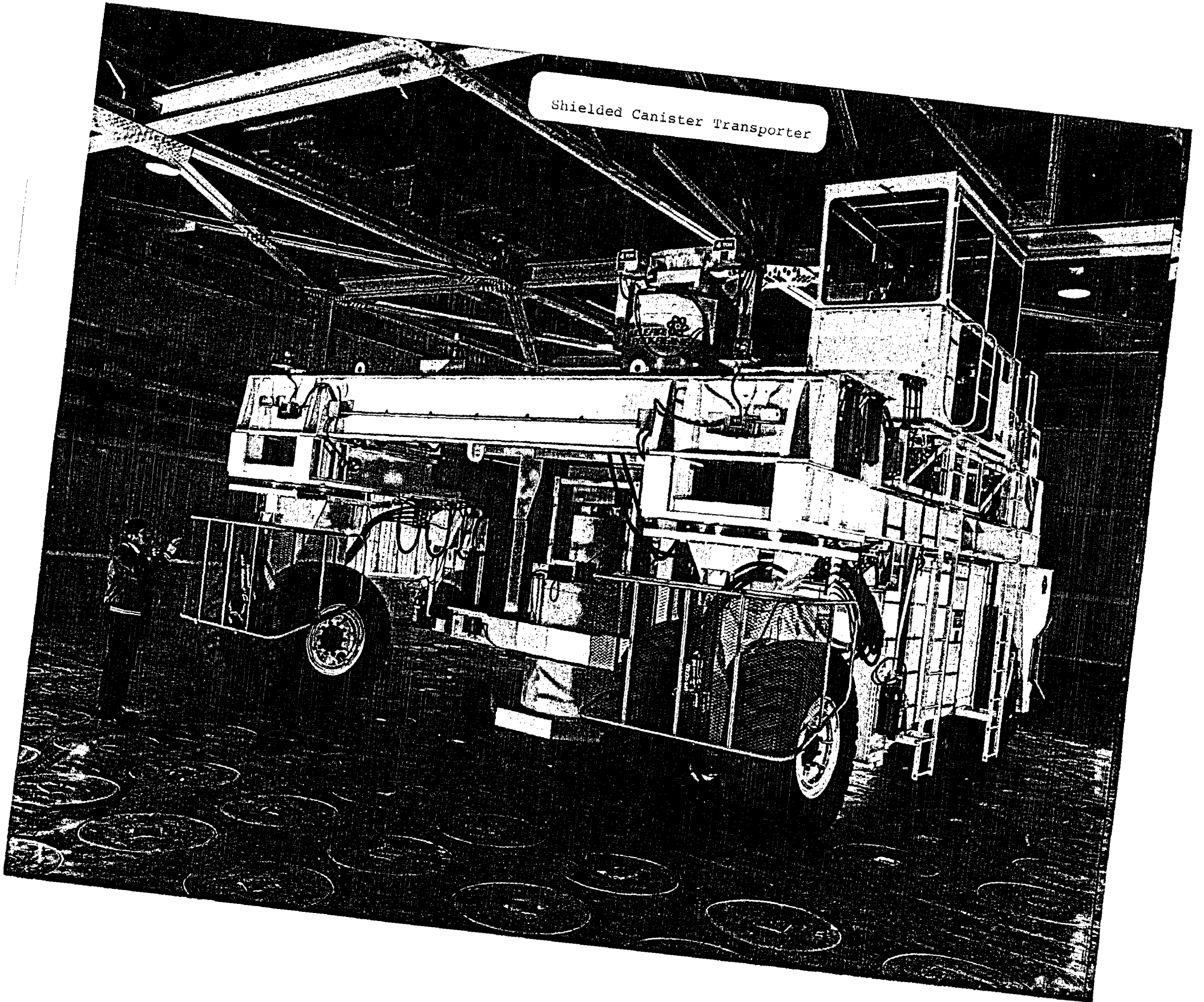


- 228 lbs/hour glass poured
- 405 canisters/year @ maximum capacity

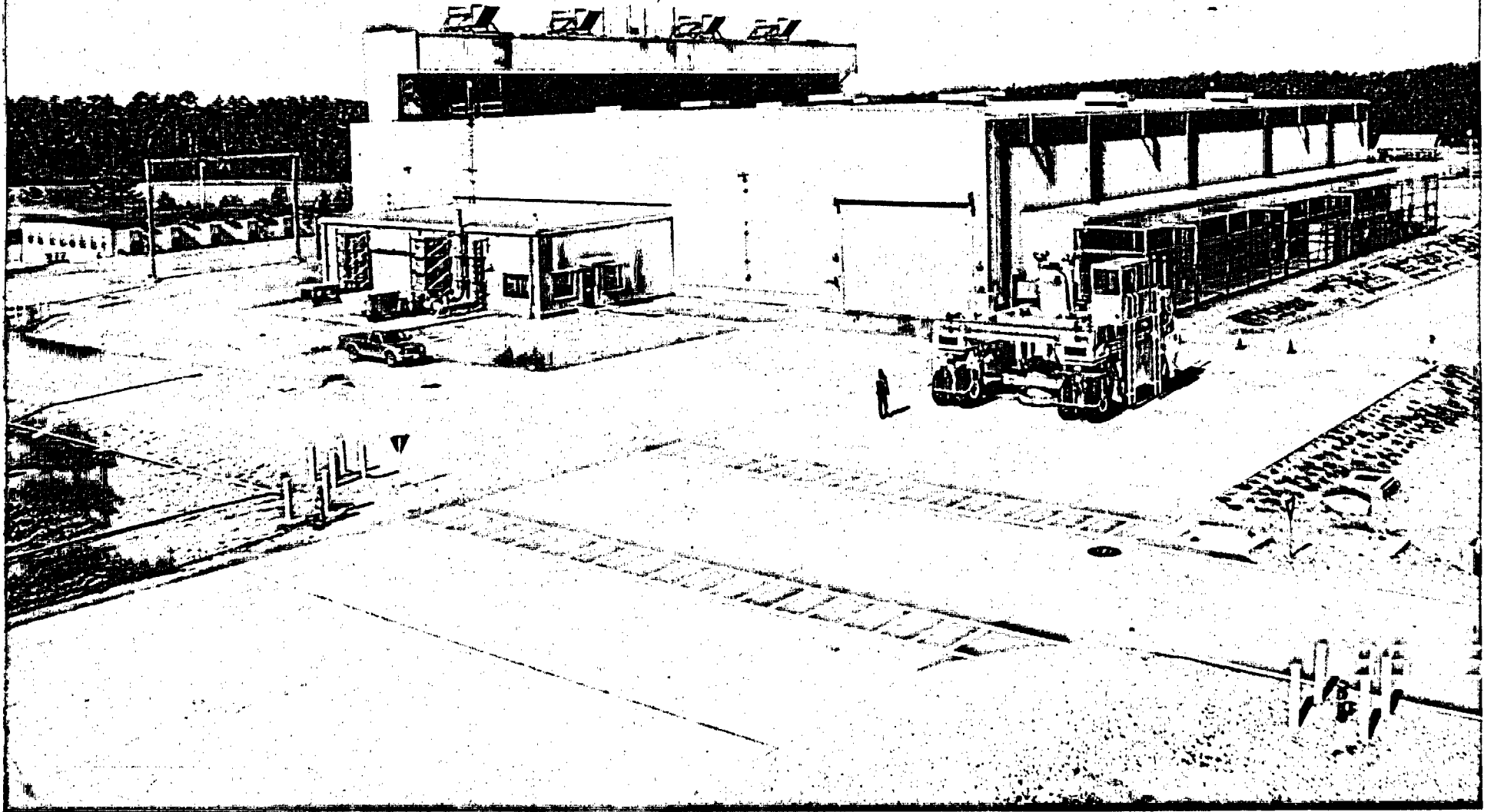
Canisters in Storage Bay



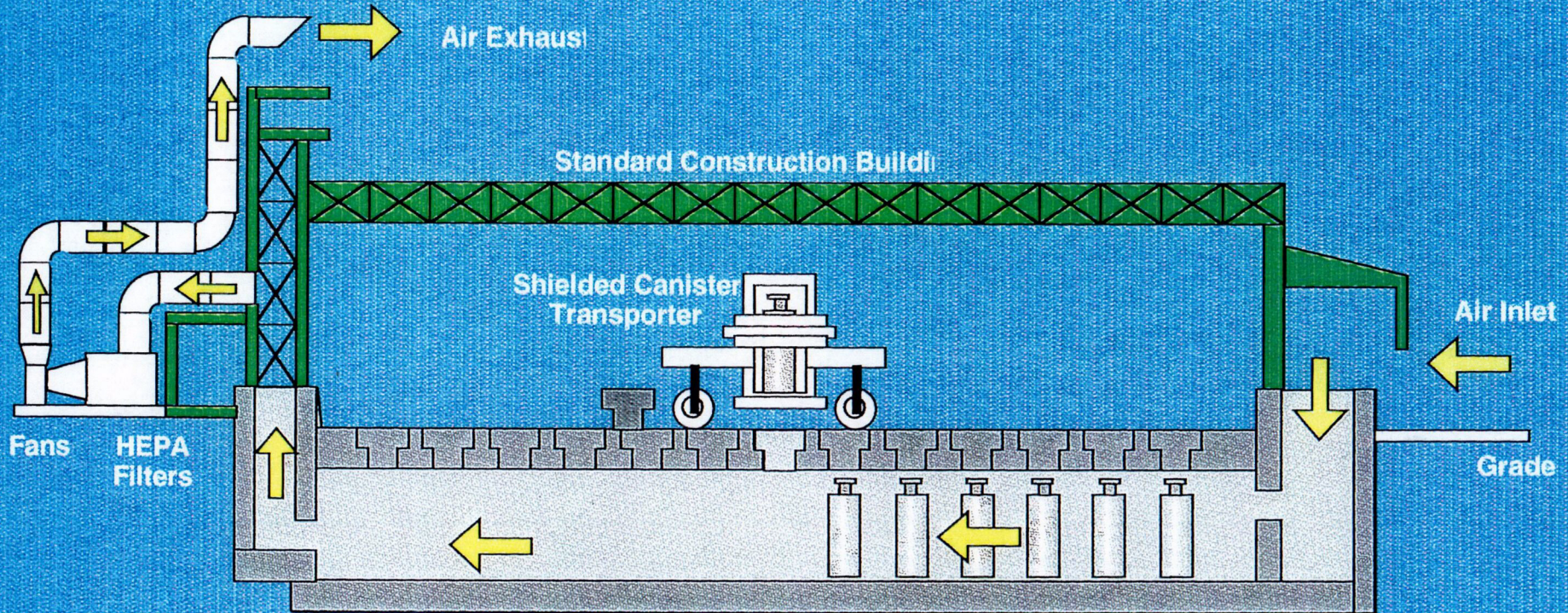
Shielded Canister Transporter



Glass Waste Storage Building

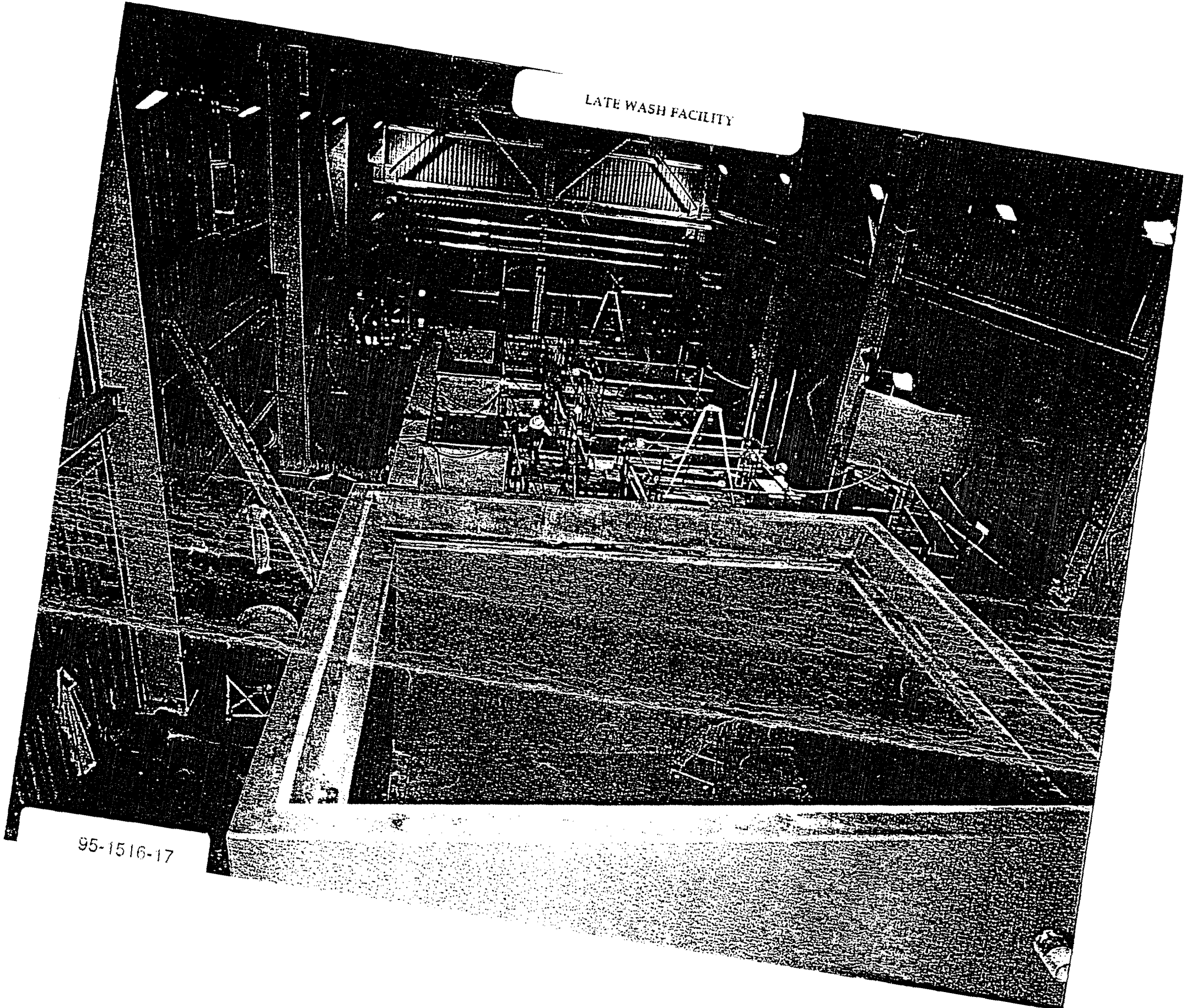


# Glass Waste Storage Building



- Interim Storage for Radioactive Canisters
- 2,286 Canister Capacity
- 5 years @ maximum DWPF Production
- About 10 years @ Planned DWPF Production

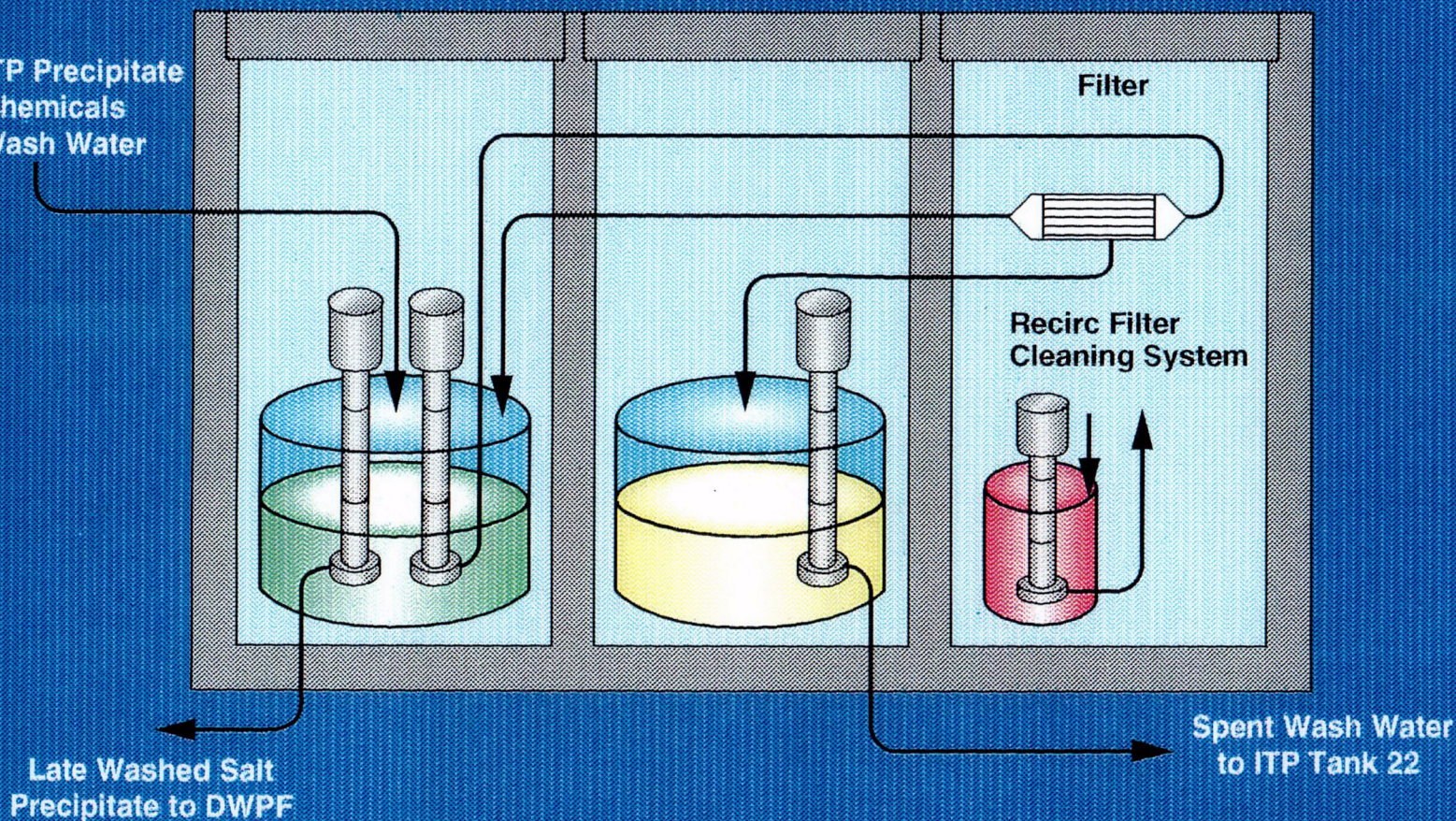
LATE WASH FACILITY



95-1516-17

# DWPF Late Wash Process

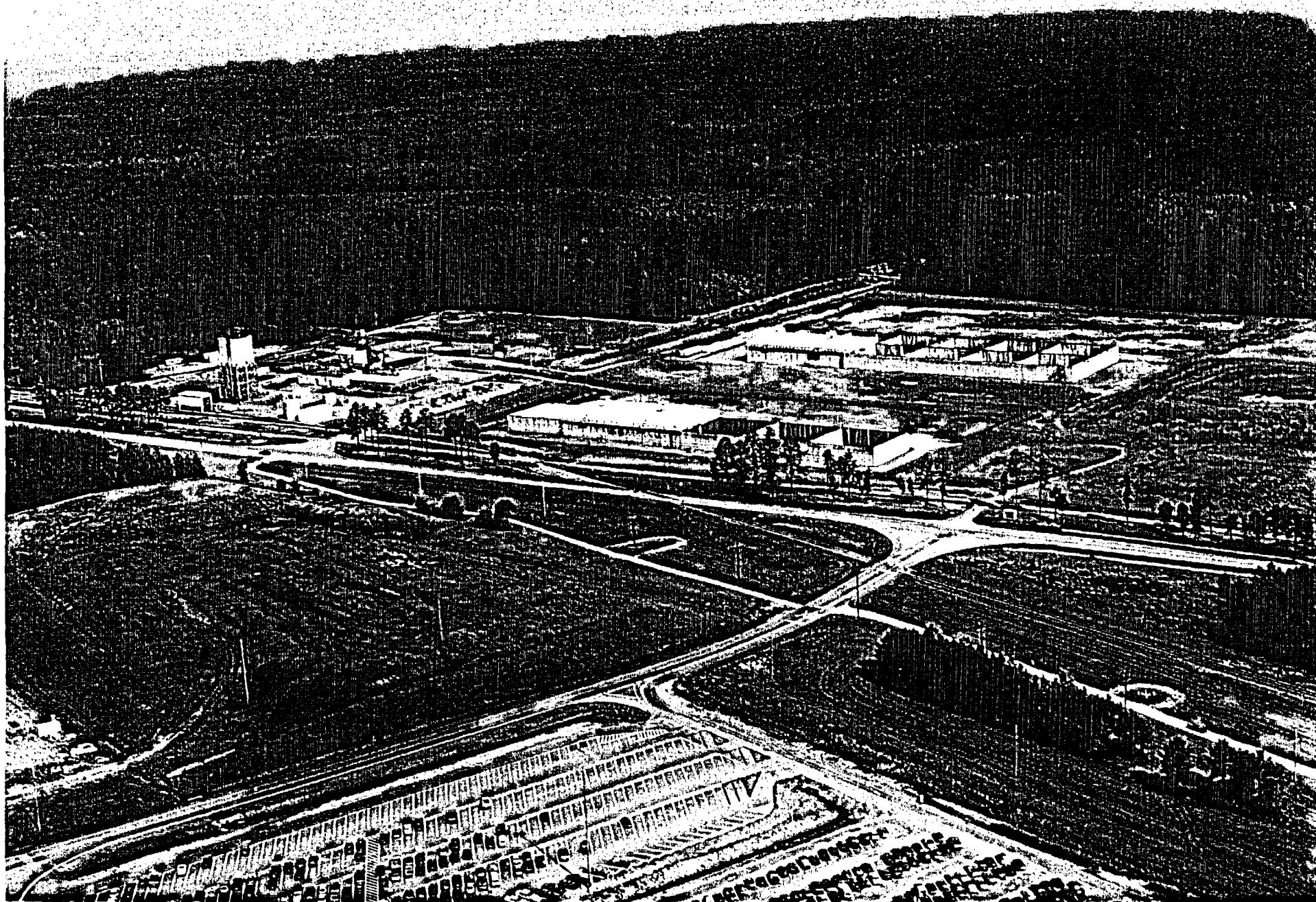
- ITP Precipitate
- Chemicals
- Wash Water



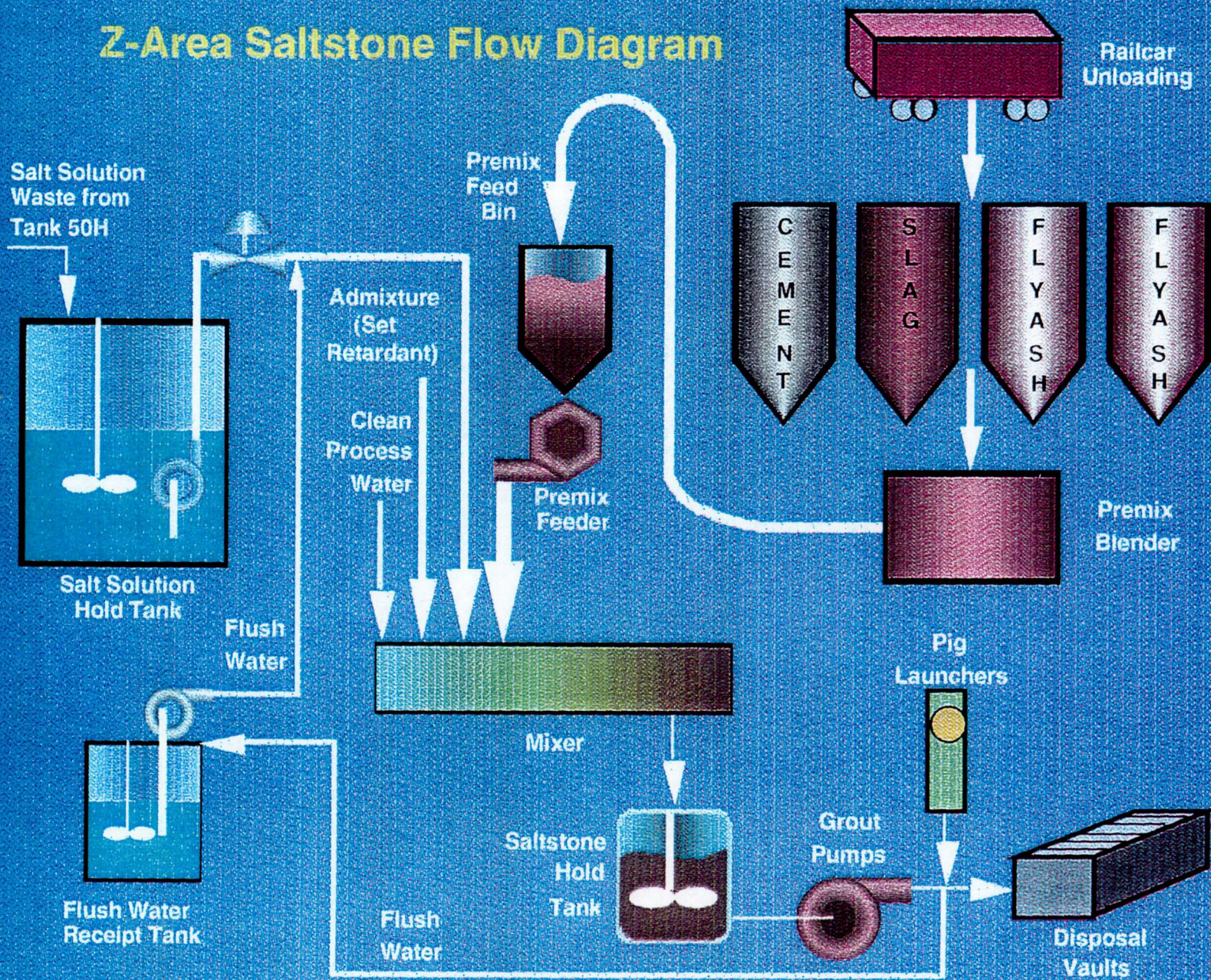
- Process Objective is to Reduce Nitrite Concentration
- Batch Process
- 3,400 Gal Precipitate/Batch from ITP



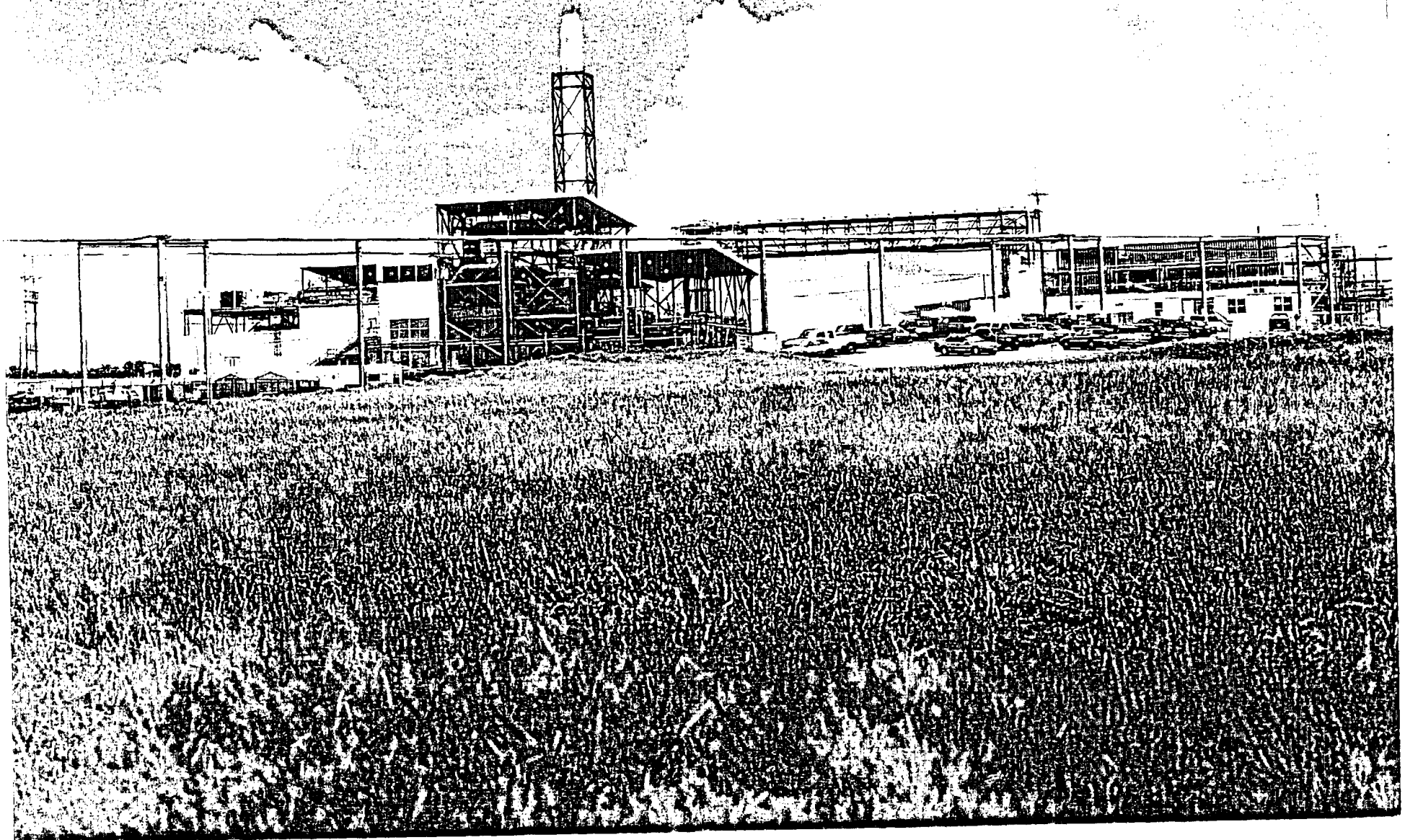
Saltstone Processing Facility



# Z-Area Saltstone Flow Diagram



Consolidated Incinerator Facility



# Consolidated Incinerator Facility

