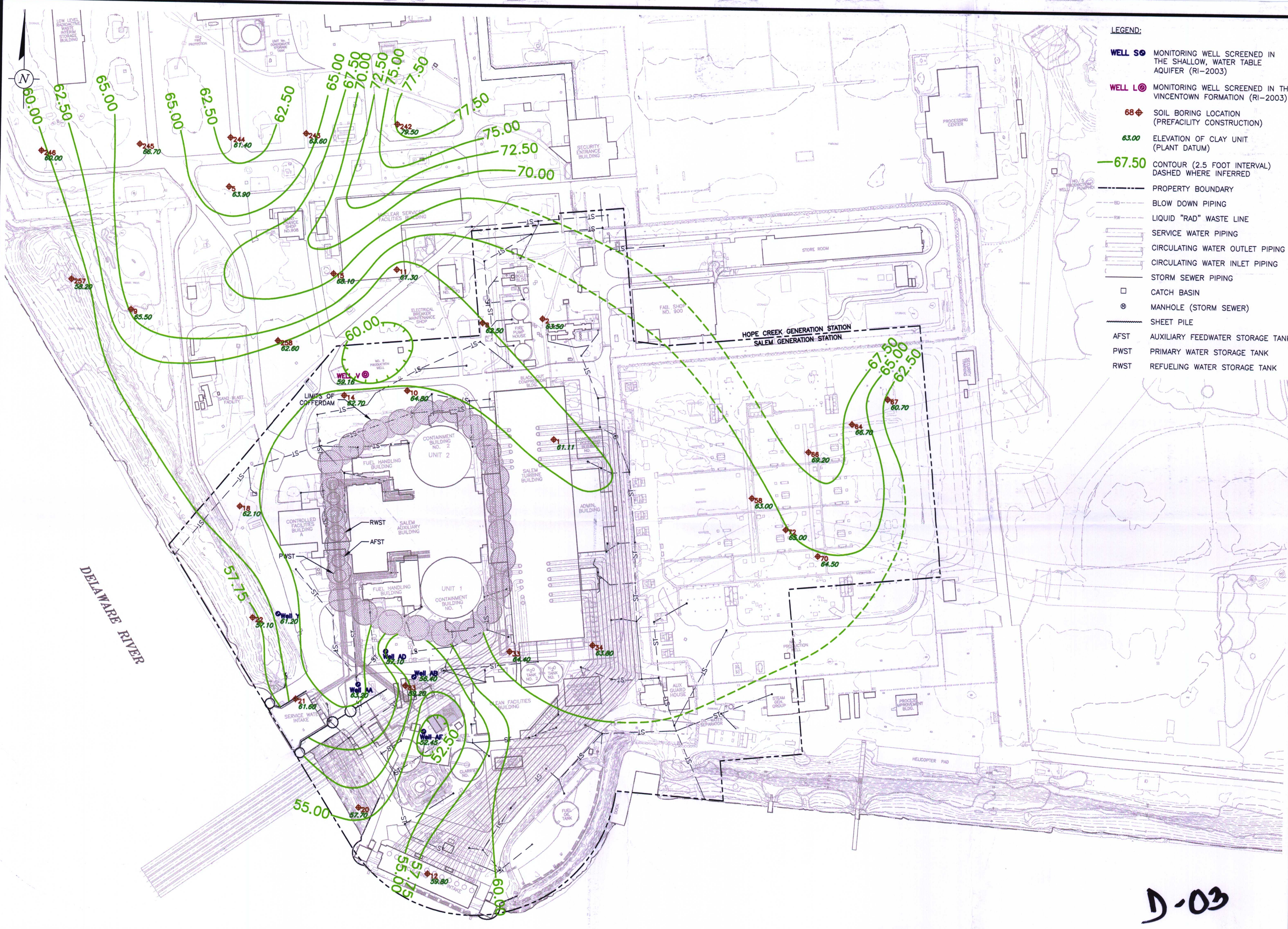
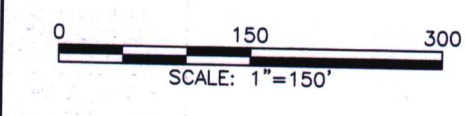


G:\PROJECT\PSE&C\Salem\NP000571.0003 - Remedial Investigation\RIWP Addendum\Final v2\cadd\FIG-4 SURFACE ELEVATION CLAY, CONFINING-UNIT.dwg, 12/1/2004 5:28pm copyright © 20 03



- LEGEND:**
- WELL S** MONITORING WELL SCREENED IN THE SHALLOW, WATER TABLE AQUIFER (RI-2003)
 - WELL L** MONITORING WELL SCREENED IN THE VINCENTOWN FORMATION (RI-2003)
 - 68** SOIL BORING LOCATION (PREFACILITY CONSTRUCTION)
 - 63.00** ELEVATION OF CLAY UNIT (PLANT DATUM)
 - 67.50** CONTOUR (2.5 FOOT INTERVAL) DASHED WHERE INFERRED
 - PROPERTY BOUNDARY
 - BLOW DOWN PIPING
 - LIQUID "RAD" WASTE LINE
 - SERVICE WATER PIPING
 - CIRCULATING WATER OUTLET PIPING
 - CIRCULATING WATER INLET PIPING
 - STORM SEWER PIPING
 - CATCH BASIN
 - ⊙ MANHOLE (STORM SEWER)
 - SHEET PILE
 - AFST AUXILIARY FEEDWATER STORAGE TANK
 - PWST PRIMARY WATER STORAGE TANK
 - RWST REFUELING WATER STORAGE TANK

D-03



NO.	DATE	REVISION DESCRIPTION	BY



6 Terry Drive
Suite 300, Newtown, PA 18940
Tel: 267/685-1800 Fax: 267/685-1801



PSEG NUCLEAR, LLC
SALEM GENERATING STATION
ARTIFICIAL ISLAND
HANCOCK'S BRIDGE, NEW JERSEY

DRAWN M. WASILEWSKI	DATE 11/20/03	PROJECT MANAGER P. MILIONIS	DEPARTMENT MANAGER D. FULTON
------------------------	------------------	--------------------------------	---------------------------------

SURFACE ELEVATION CLAY, CONFINING-UNIT		LEAD DESIGN PROF. S. POTTER	CHECKED B. PIERCE
PROJECT NUMBER NP000571.0003		DRAWING NUMBER 4	