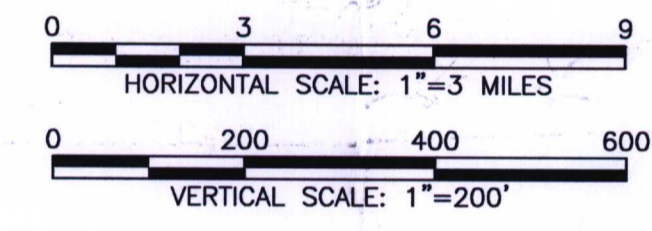
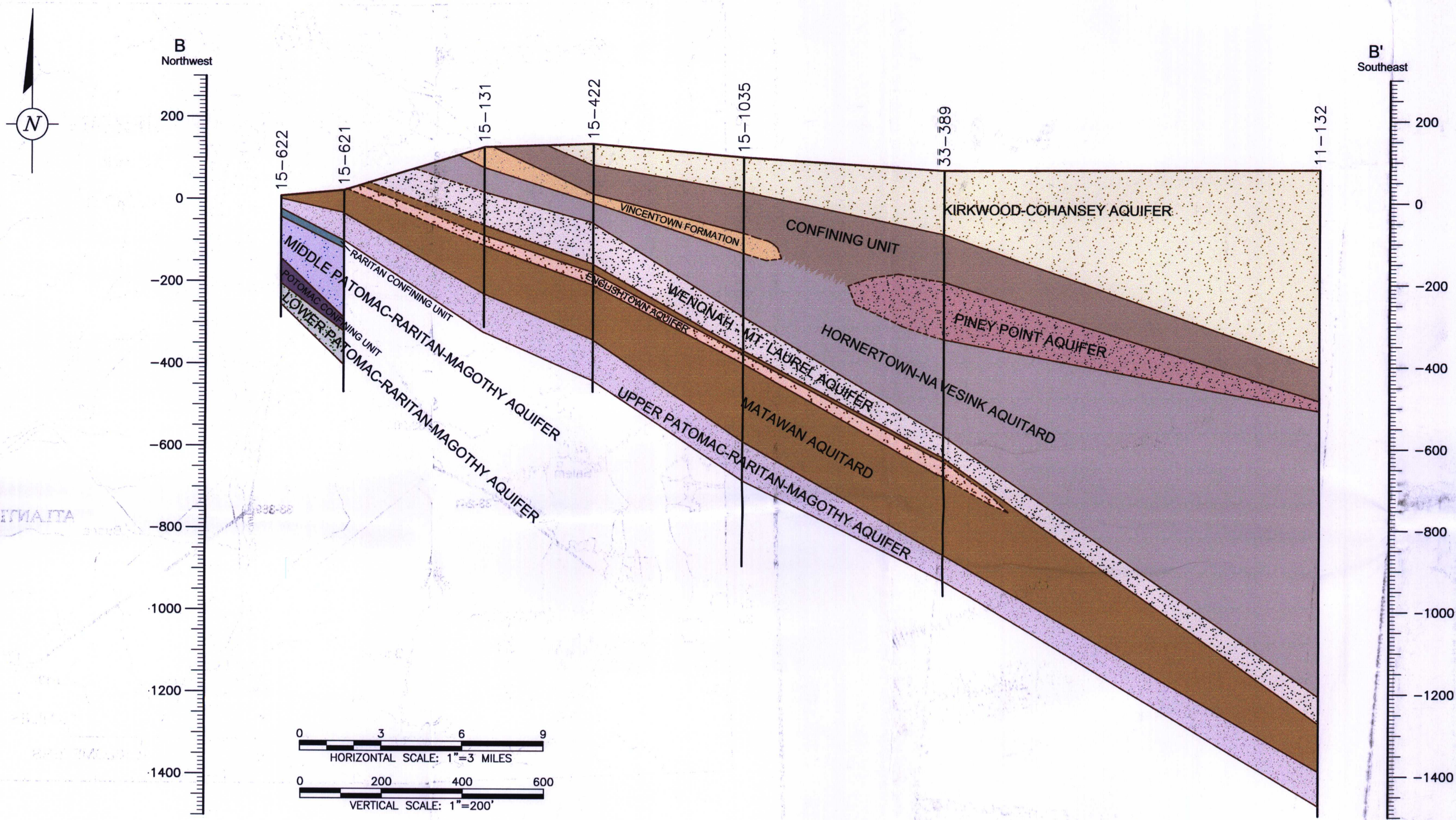


**SOURCE:**  
 CAULLER, STEPHEN J., CARLETON, GLEN B., STORCK, MELISSA J.; HYDROGEOLOGY OF WATER WITHDRAWAL FROM, AND WATER LEVELS AND CHLORIDE CONCENTRATIONS IN THE MAJOR COASTAL PLAIN AQUIFERS OF GLOUCESTER AND SALEM COUNTIES, NEW JERSEY; UNITED STATES GEOLOGIC SURVEY WATER-RESOURCES INVESTIGATION REPORT 98-4136, 1999.



NO.	DATE	REVISION DESCRIPTION	BY
			CKD

DRAWING CONFIDENTIAL: THIS DRAWING AND ALL INFORMATION CONTAINED THEREON IS AND SHALL REMAIN THE PROPERTY OF ARCADIS GERAGHTY & MILLER AS AN INSTRUMENT OF PROFESSIONAL SERVICE. THIS INFORMATION SHALL NOT BE USED IN WHOLE OR IN PART WITHOUT THE FULL KNOWLEDGE AND PRIOR WRITTEN CONSENT OF ARCADIS GERAGHTY & MILLER.

PSEG NUCLEAR, LLC  
 SALEM GENERATING STATION  
 ARTIFICIAL ISLAND  
 HANCOCK'S BRIDGE, NEW JERSEY

REGIONAL CROSS SECTIONS

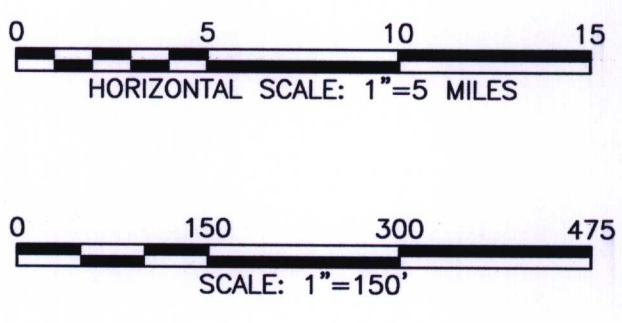
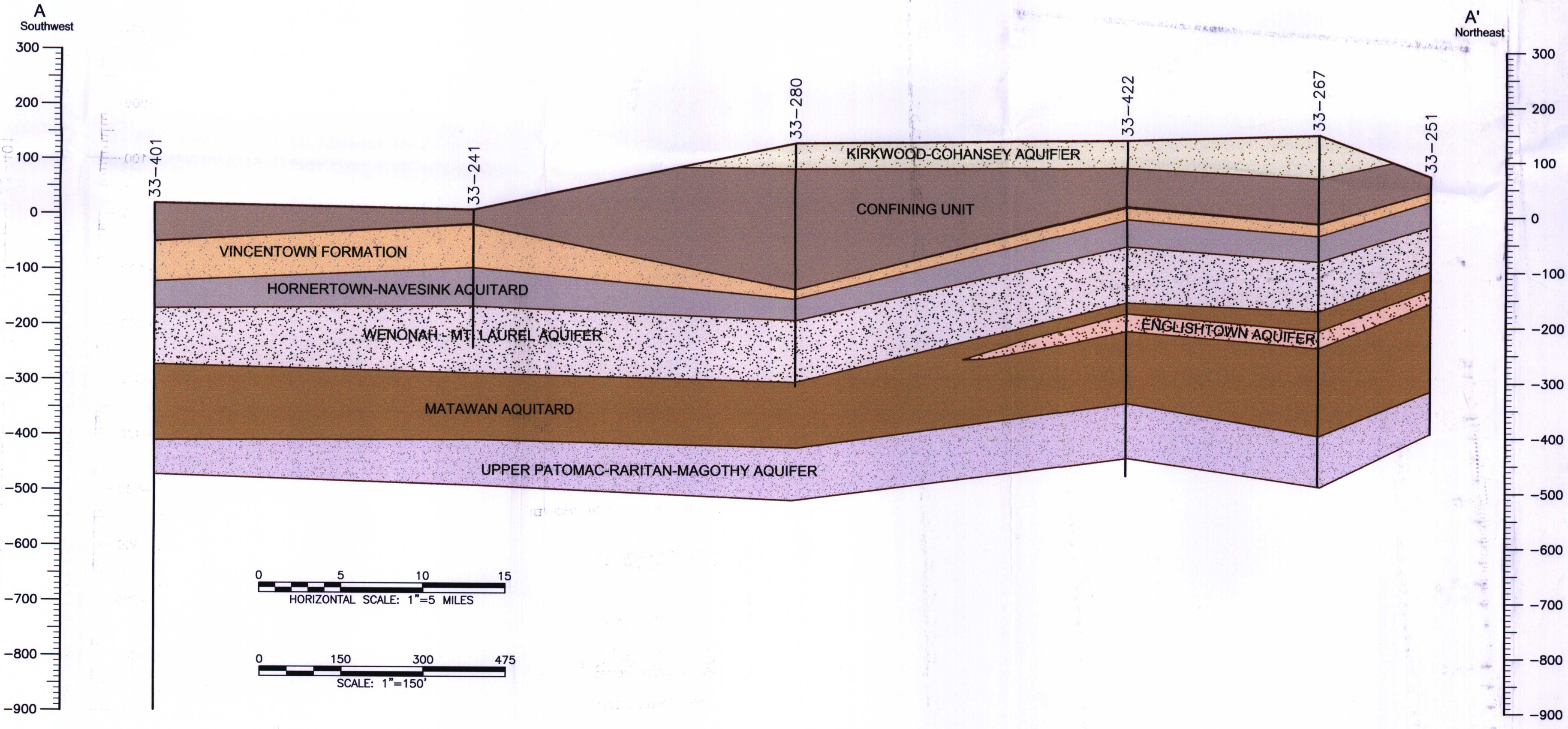


6 Terry Drive  
 Suite 300, Newtown, PA 18940  
 Tel: 267/685-1800 Fax: 267/685-1801

D-02

- LEGEND:**
- KIRKWOOD-COHANSEY AQUIFER
  - CONFINING UNIT
  - PINEY POINT AQUIFER
  - VINCENTOWN FORMATION
  - HORNERTOWN-NAVESINK AQUITARD
  - WENONAH - MT. LAUREL AQUIFER
  - MATAWAN AQUITARD
  - ENGLISHTOWN AQUIFER
  - UPPER PATOMAC-RARITAN-MAGOTHY AQUIFER
  - RARITAN CONFINING UNIT
  - MIDDLE PATOMAC-RARITAN-MAGOTHY AQUIFER
  - POTOMAC CONFINING UNIT
  - LOWER PATOMAC-RARITAN-MAGOTHY AQUIFER

- WELL DESIGNATION (U.S. GEOLOGIC SURVEY WELL NUMBER)
- EXISTING LAND SURFACE
- HYDROGEOLOGIC UNIT BOUNDARY, DASHED WHERE APPROXIMATELY LOCATED
- BOREHOLE/WELL CASING



PROJECT MANAGER P. MILONIS	DEPARTMENT MANAGER D. FULTON
LEAD DESIGN PROF. S. POTTER	CHECKED B. PIERCE
DRAWN M. WASILEWSKI	DATE 9/26/03
PROJECT NUMBER NP000571.0003	DRAWING NUMBER 3