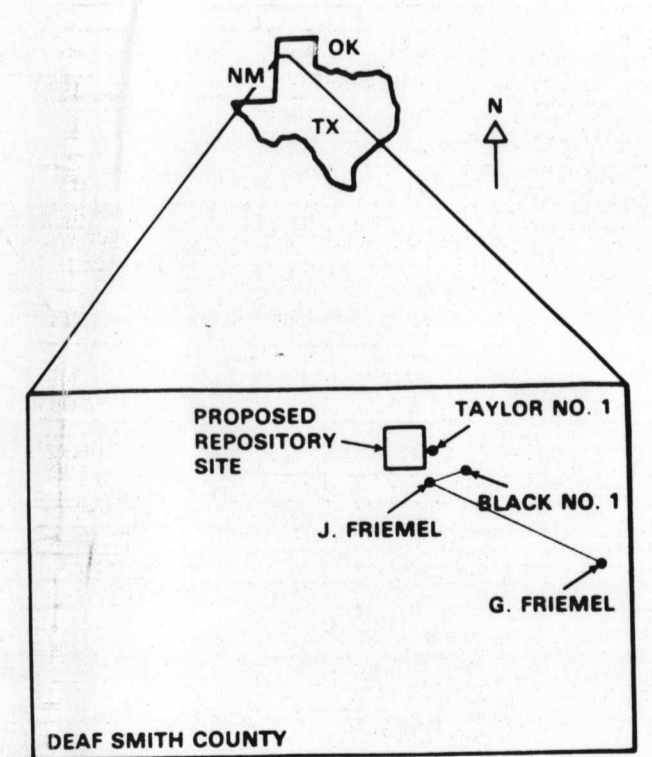
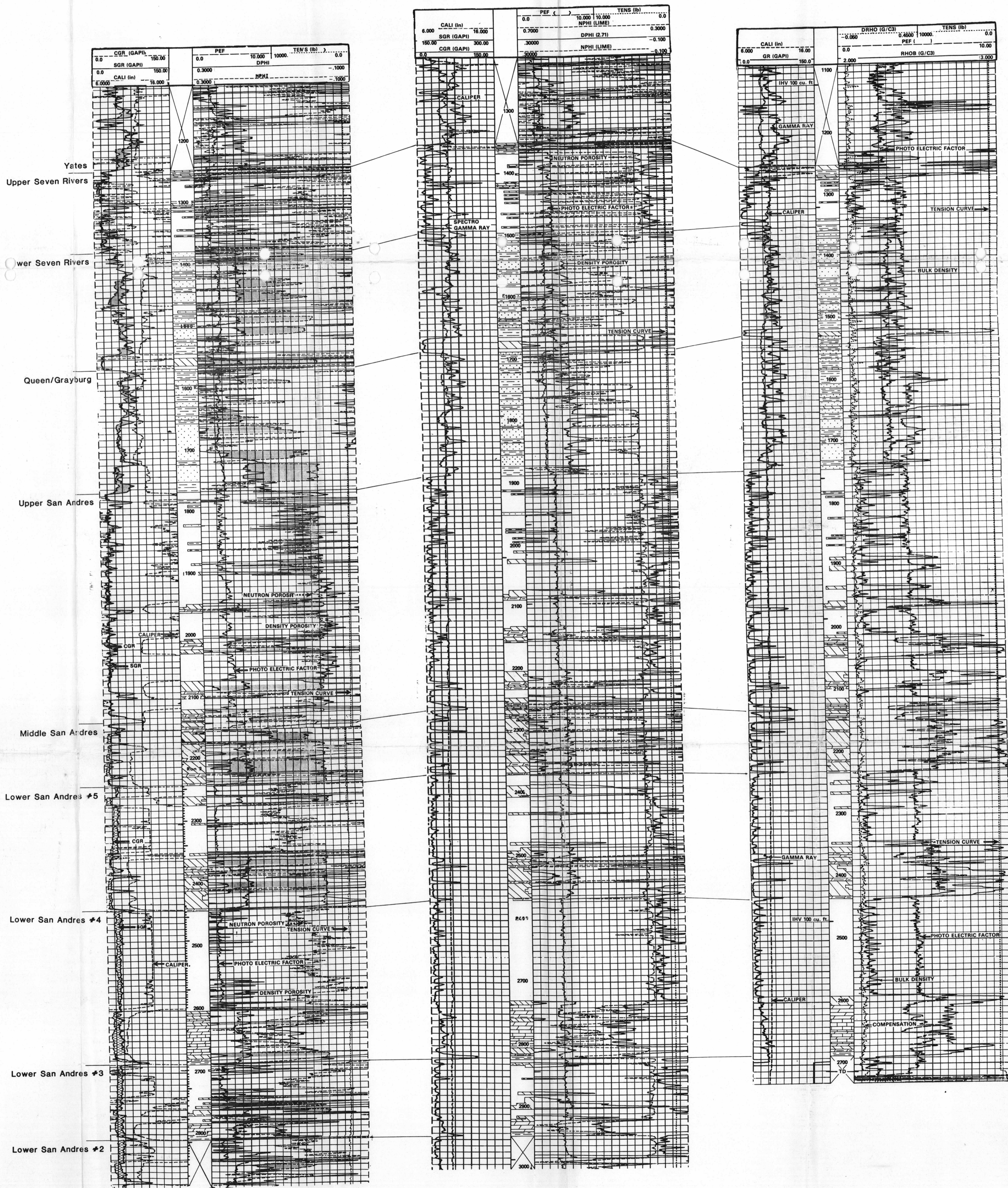


Middle/Upper Permian Correlation - Palo Duro Basin, Texas

Black #1 — 3 miles (approx.) — J. Friemel #1 — 15 miles (approx.) — G. Friemel #1
 K.B. 3978' K.B. 4025' KB. 3823'



- salt
- ▨ anhydrite
- ▩ dolomite
- ▧ limestone
- ▦ siltstone/mudstone/claystone
- ▤ sandstone

J. Friemel
 1464'-1346'
 2830'-1864'
 G. Friemel
 1312'-1220'
 2690'-1727'

Black
 2810'-1243'
 J. Friemel
 1864'-1464'
 2945'-2130'
 G. Friemel
 1727'-1312'

lithologies generalized from the lithology logs of Hovorka (1968)

lithologies interpreted from geophysical logs

J. Warner - U.S. NRC

D-02
 8804080103-02