

Peripheral Oxide

Utility: Comanche Peak 2

Assembly: JW07

Face: 3

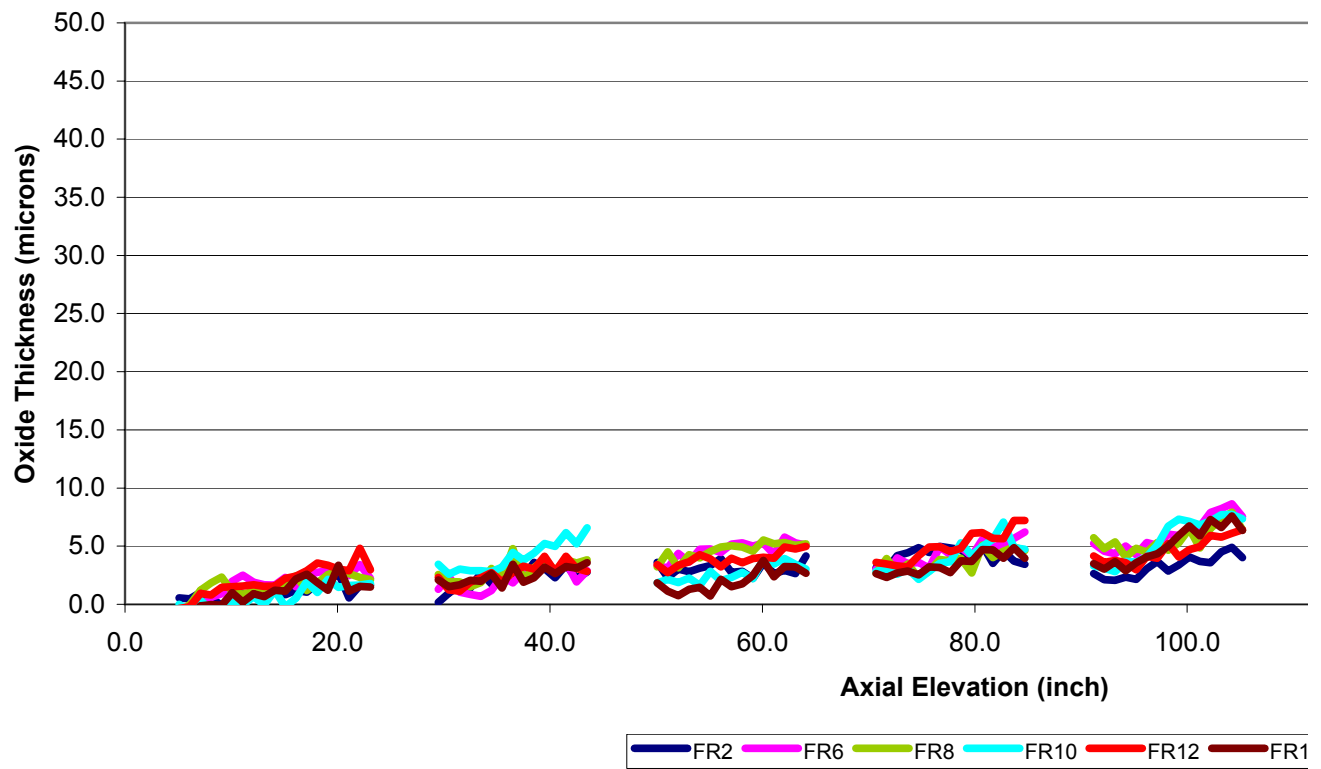
Date: 16-Oct-2003

Elevation	R02	R06	R08	R10	R12	R14
5.1	0.6	-0.9	-0.6	0.0	-0.4	-1.1
6.1	0.5	-0.6	-0.1	-0.6	-0.2	-1.1
7.1	1.0	-0.2	1.2	0.4	0.9	-0.1
8.1	0.5	0.6	1.8	-0.6	0.8	0.0
9.1	-0.1	0.9	2.3	-0.7	1.5	-0.1
10.1	-0.3	2.0	1.1	0.2	1.5	1.0
11.1	0.9	2.5	0.9	-0.1	1.6	0.2
12.1	0.7	1.9	1.1	0.7	1.7	0.9
13.1	1.0	1.7	1.1	-0.1	1.6	0.7
14.1	1.0	1.7	1.4	1.2	1.6	1.2
15.1	0.8	2.3	1.8	-0.2	2.2	1.1
16.1	1.2	1.5	2.5	0.5	2.4	2.2
17.1	1.1	2.5	1.2	2.0	2.9	2.6
18.1	1.8	2.8	1.9	1.0	3.5	1.9
19.1	1.9	2.9	2.6	2.2	3.4	1.2
20.1	2.7	2.9	2.9	1.5	3.0	3.4
21.1	0.6	2.5	2.7	1.6	2.9	1.1
22.1	1.6	3.4	2.3	1.7	4.8	1.5
23.1	1.6	2.2	2.1	1.8	3.0	1.5
29.5	0.2	1.3	2.6	3.4	2.3	2.1
30.5	1.0	2.4	2.0	2.6	1.3	1.5
31.5	1.6	1.0	1.9	3.0	1.1	1.7
32.5	1.4	0.9	1.5	2.9	1.9	2.1
33.5	2.7	0.7	1.9	2.9	2.3	2.0
34.5	1.8	1.2	3.1	2.8	2.7	2.7
35.5	2.8	2.4	2.2	3.2	1.9	1.4
36.5	2.7	1.9	4.8	4.5	2.8	3.4
37.5	2.3	2.8	2.1	3.8	3.3	1.9
38.5	3.6	2.8	3.2	4.4	3.0	2.3
39.5	3.1	3.2	3.8	5.2	4.1	3.2
40.5	2.3	2.9	2.9	5.0	2.8	2.6
41.5	3.4	3.6	3.8	6.2	4.1	3.3
42.5	2.3	1.9	3.6	5.2	3.1	3.1
43.5	2.8	2.9	3.8	6.6	2.8	3.6
50.1	3.6	3.4	3.2	1.8	3.4	1.9
51.1	2.3	3.1	4.5	2.1	2.7	1.1
52.1	3.0	4.4	3.1	1.9	3.4	0.8
53.1	2.8	3.6	4.3	2.3	3.7	1.3
54.1	3.1	4.7	4.0	1.6	4.3	1.5
55.1	3.3	4.8	4.5	2.8	3.9	0.7

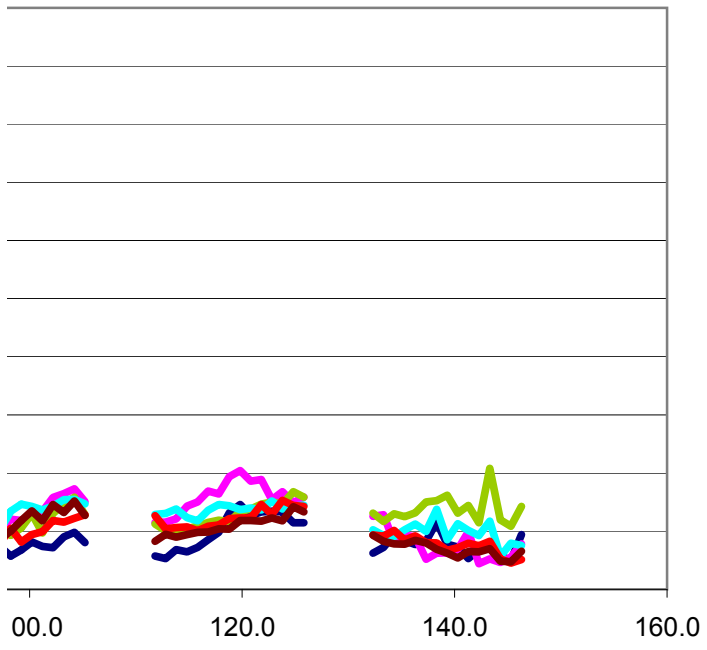
56.1	3.9	4.5	4.9	2.0	3.2	2.2
57.1	2.7	5.2	5.0	2.3	4.0	1.5
58.1	2.8	5.3	4.9	2.8	3.6	1.8
59.1	2.2	5.0	4.6	2.2	3.9	2.5
60.1	3.6	5.3	5.5	3.9	4.0	3.8
61.1	2.7	4.3	5.2	3.5	4.0	2.4
62.1	2.9	5.8	5.3	3.9	4.9	3.3
63.1	2.7	5.3	5.1	3.5	4.8	3.2
64.1	4.2	5.1	5.2	3.0	5.0	2.7
70.7	3.2	3.0	2.7	2.8	3.6	2.7
71.7	3.0	2.6	3.9	3.0	3.5	2.3
72.7	4.2	4.0	2.8	2.6	3.3	2.7
73.7	4.4	3.5	3.5	3.1	3.2	2.9
74.7	4.9	3.6	2.3	2.2	4.2	2.5
75.7	4.5	3.1	2.9	2.8	4.9	3.2
76.7	5.0	5.0	3.9	3.5	5.0	3.2
77.7	4.8	4.3	3.7	3.7	4.5	2.7
78.7	4.7	4.9	4.0	5.3	4.8	3.7
79.7	3.9	4.2	2.7	4.2	6.1	3.7
80.7	5.1	5.6	5.1	5.0	6.2	4.7
81.7	3.5	4.9	4.0	5.6	5.7	4.7
82.7	4.6	5.2	4.6	7.1	5.7	4.0
83.7	3.7	5.7	4.9	4.9	7.2	4.9
84.7	3.4	6.2	4.6	4.7	7.2	4.0
91.2	2.6	5.2	5.7	3.3	4.2	3.5
92.2	2.1	4.6	4.8	3.1	3.6	3.0
93.2	2.1	4.4	5.4	2.8	3.8	3.7
94.2	2.4	5.0	4.1	3.7	3.6	2.9
95.2	2.2	4.3	4.8	3.6	3.0	3.6
96.2	3.1	5.3	4.5	4.1	4.1	4.1
97.2	3.7	5.1	5.3	5.1	4.0	4.3
98.2	2.9	6.0	4.6	6.7	5.2	5.0
99.2	3.4	5.9	5.3	7.3	4.1	5.9
100.2	4.1	6.4	6.5	7.1	4.7	6.8
101.2	3.7	6.7	4.9	6.8	4.9	5.9
102.2	3.6	7.9	6.5	7.2	5.9	7.3
103.2	4.5	8.2	7.4	7.7	5.8	6.6
104.2	4.9	8.6	7.9	7.7	6.1	7.6
105.2	4.0	7.5	6.4	7.4	6.4	6.4
111.8	2.9	5.7	5.6	6.4	6.3	4.1
112.8	2.6	5.8	5.0	6.5	5.2	4.7
113.8	3.4	6.1	4.6	6.9	5.3	4.5
114.8	3.2	7.2	5.2	6.2	5.4	4.7
115.8	3.6	7.5	5.4	5.9	5.0	4.9
116.8	4.3	8.5	5.8	6.8	5.4	4.9
117.8	4.9	8.2	6.0	7.3	5.5	5.2
118.8	6.6	9.7	5.8	7.2	6.1	5.2
119.8	7.3	10.2	6.7	6.9	6.1	5.9

120.8	6.3	9.3	6.9	7.0	6.2	5.9
121.8	6.7	9.5	7.3	6.8	7.3	5.9
122.8	6.7	7.7	7.5	7.6	6.5	6.1
123.8	6.7	8.4	7.3	6.9	7.7	5.9
124.8	5.7	7.5	8.4	7.2	7.2	7.1
125.8	5.7	7.9	7.9	7.2	7.1	6.7
132.3	3.1	6.3	6.6	5.1	4.7	4.6
133.3	3.6	6.4	5.8	4.6	4.6	4.1
134.3	4.7	4.1	6.5	4.6	5.1	3.9
135.3	4.2	4.7	6.3	5.1	4.2	3.9
136.3	3.8	4.5	6.6	5.6	4.6	4.2
137.3	4.2	2.6	7.5	5.0	4.0	4.0
138.3	5.8	3.1	7.6	6.9	4.0	3.5
139.3	3.9	3.1	8.1	4.3	3.4	3.1
140.3	3.6	3.5	6.6	5.7	3.6	2.7
141.3	2.7	5.0	7.2	5.1	4.0	3.2
142.3	3.4	2.2	5.7	4.6	3.7	3.2
143.3	3.9	2.6	10.4	5.9	4.1	3.5
144.3	2.9	2.3	6.0	2.8	2.6	2.4
145.3	2.5	2.8	5.4	4.0	2.3	2.4
146.3	4.7	3.9	7.1	3.8	2.6	3.3
max	7.3	10.2	10.4	7.7	7.7	7.6

Peripheral Rod Oxide (Comanche Peak 2, FA JW07, FA



JW07, FACE 3)



R12 FR14

