

Peripheral Oxide

Utility: Comanche Peak 2

Assembly: JW07

Face: 1

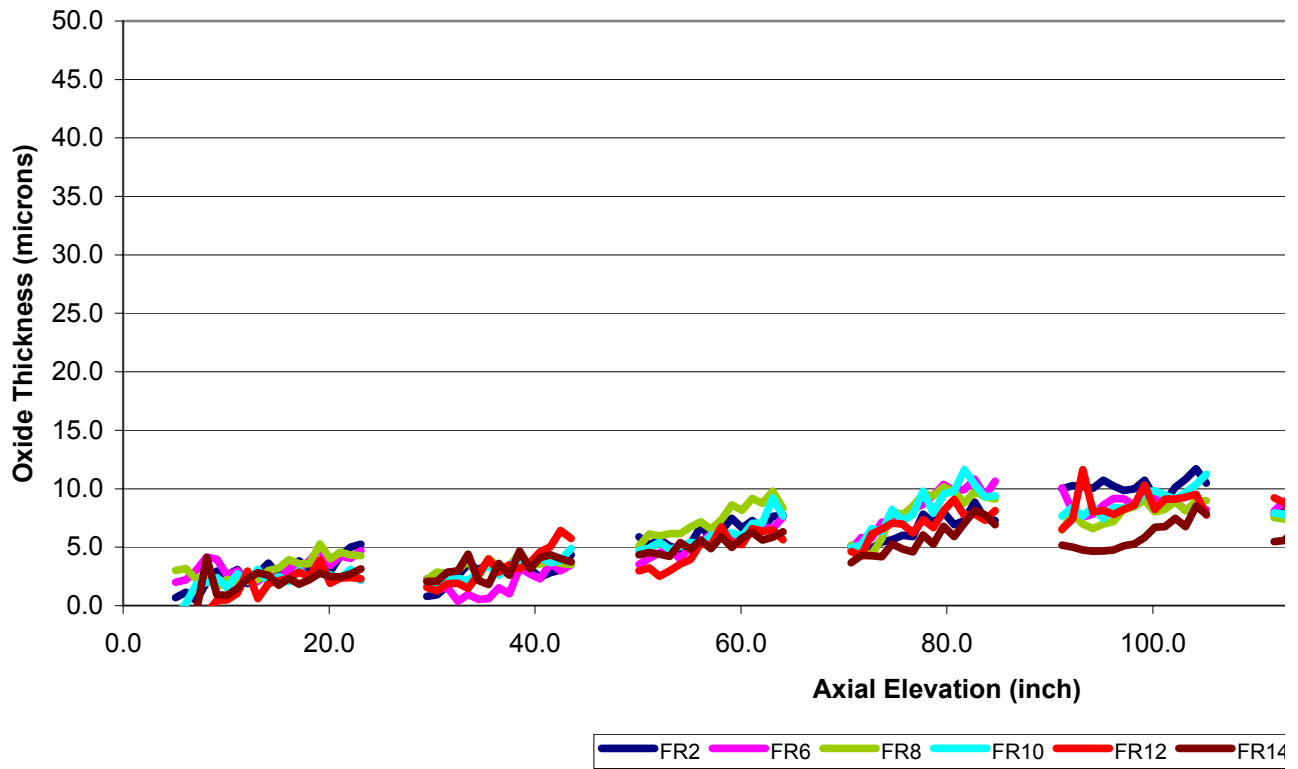
Date: 16-Oct-2003

Elevation	R02	R06	R08	R10	R12	R14
5.1	0.7	2.0	3.0	-1.0	-1.8	-0.6
6.1	1.2	2.2	3.2	0.2	-2.1	-0.6
7.1	0.5	3.0	2.3	1.8	-0.7	-0.6
8.1	2.0	4.2	2.6	2.0	-0.6	4.1
9.1	3.0	4.0	1.6	2.4	0.4	0.9
10.1	2.6	2.6	2.2	1.5	0.5	0.9
11.1	3.1	3.0	2.1	2.7	1.1	1.5
12.1	1.9	2.1	2.1	2.0	3.0	2.3
13.1	2.8	2.1	2.3	3.1	0.6	2.8
14.1	3.7	3.0	3.0	2.0	1.9	2.6
15.1	2.6	2.1	3.2	2.5	2.1	1.8
16.1	3.1	3.3	3.9	2.0	2.3	2.3
17.1	3.8	3.2	3.6	3.0	2.9	1.8
18.1	3.0	3.8	3.6	2.4	2.5	2.2
19.1	3.0	4.9	5.3	2.8	3.9	2.8
20.1	2.9	3.4	4.0	2.6	1.9	2.5
21.1	4.3	4.2	4.6	2.4	2.4	2.5
22.1	5.0	4.1	4.3	3.1	2.4	2.7
23.1	5.3	4.7	4.3	2.2	2.3	3.2
29.5	0.8	2.3	2.3	1.8	1.6	2.1
30.5	0.9	1.4	2.9	1.5	1.3	2.1
31.5	1.7	1.5	2.7	2.4	1.9	2.9
32.5	2.6	0.4	3.0	2.4	1.9	3.0
33.5	3.5	1.0	3.9	2.1	1.5	4.4
34.5	3.1	0.5	2.4	2.9	2.7	2.2
35.5	3.6	0.6	4.0	3.4	4.0	1.8
36.5	3.0	1.5	3.3	2.6	2.9	3.6
37.5	2.7	1.0	3.3	3.5	3.5	2.6
38.5	3.0	3.3	4.6	3.8	3.2	4.7
39.5	3.1	2.7	3.4	3.8	3.7	3.2
40.5	2.4	2.3	3.6	4.1	4.6	4.1
41.5	2.8	3.6	3.9	3.7	5.0	4.4
42.5	3.1	3.0	3.6	3.9	6.4	4.0
43.5	4.4	3.5	3.5	4.9	5.7	3.8
50.1	5.9	3.5	5.1	4.7	3.0	4.4
51.1	5.2	4.1	6.1	4.9	3.2	4.5
52.1	5.7	4.5	6.0	5.4	2.5	4.4
53.1	5.1	4.9	6.2	4.8	3.0	4.2
54.1	4.8	4.0	6.2	5.1	3.6	5.4
55.1	5.3	5.2	6.7	5.4	3.9	4.8
56.1	6.8	5.5	7.2	5.2	5.3	5.6
57.1	5.9	6.1	6.5	6.0	5.1	4.9

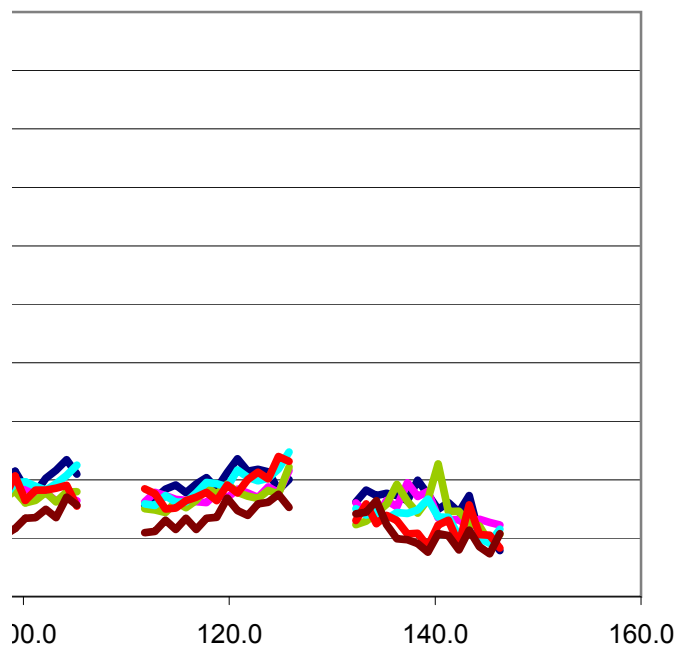
58.1	6.4	6.3	7.3	6.3	6.7	5.9
59.1	7.5	5.9	8.6	6.2	5.3	5.0
60.1	6.6	6.0	8.2	5.9	5.2	5.8
61.1	7.3	6.2	9.2	7.0	6.6	6.3
62.1	6.7	6.8	8.8	7.1	6.3	5.6
63.1	7.6	6.6	9.8	9.2	6.5	5.9
64.1	7.8	7.6	8.3	7.7	5.7	6.3
70.7	5.1	4.8	5.2	5.0	4.6	3.7
71.7	5.4	5.8	4.6	5.2	4.3	4.3
72.7	4.9	5.8	4.4	6.6	6.1	4.3
73.7	5.5	7.1	5.8	6.3	6.5	4.2
74.7	5.6	7.1	8.1	8.2	7.1	5.3
75.7	6.0	7.7	7.8	7.2	7.0	4.9
76.7	5.9	8.3	8.5	7.8	6.2	4.6
77.7	7.8	8.7	9.6	9.8	7.4	6.1
78.7	7.1	9.4	9.4	7.9	6.7	5.3
79.7	8.0	10.4	10.2	9.6	8.1	6.8
80.7	6.9	9.8	9.8	9.8	9.1	5.9
81.7	7.3	9.9	8.8	11.6	7.7	7.1
82.7	8.9	10.8	9.7	10.4	7.9	8.2
83.7	7.4	9.4	9.3	9.3	7.3	7.8
84.7	7.3	10.7	9.1	9.4	8.1	6.9
91.2	10.0	10.1	6.5	7.7	6.6	5.2
92.2	10.3	8.0	7.9	8.4	7.4	5.0
93.2	10.2	7.6	7.0	7.7	11.6	4.8
94.2	10.0	7.8	6.6	8.5	8.0	4.7
95.2	10.7	8.6	7.0	7.5	8.2	4.7
96.2	10.2	9.2	7.2	8.4	7.8	4.8
97.2	9.9	9.1	8.2	8.3	8.2	5.1
98.2	10.0	8.6	8.5	8.6	8.6	5.3
99.2	10.7	9.5	9.0	9.7	10.3	5.8
100.2	9.2	9.3	8.0	9.8	8.3	6.7
101.2	8.9	8.8	8.2	9.4	9.1	6.8
102.2	10.1	8.9	8.9	9.1	9.1	7.5
103.2	10.8	8.2	8.1	9.7	9.3	6.8
104.2	11.7	8.5	8.9	10.4	9.5	8.5
105.2	10.5	8.2	9.0	11.3	7.7	7.8
111.8	7.8	8.1	7.5	8.0	9.2	5.5
112.8	8.4	8.9	7.4	7.8	8.8	5.6
113.8	9.2	8.7	7.2	8.6	7.5	6.5
114.8	9.6	8.3	8.1	8.1	7.6	5.7
115.8	8.9	8.3	7.6	8.1	8.2	6.7
116.8	9.6	8.1	8.3	8.9	8.5	5.7
117.8	10.2	8.1	9.4	9.8	8.9	6.7
118.8	9.2	8.9	8.8	9.7	8.2	6.8
119.8	10.6	8.5	9.6	9.4	9.6	8.4
120.8	11.8	9.2	8.9	10.8	8.9	7.4
121.8	10.7	8.9	8.6	10.2	10.0	6.9
122.8	10.9	8.5	8.4	9.9	10.7	8.0

123.8	10.7	9.4	9.1	10.1	10.1	8.1
124.8	9.2	8.9	8.8	10.9	12.0	8.8
125.8	10.0	10.8	11.1	12.4	11.6	7.6
132.3	8.1	8.0	6.2	7.5	6.5	7.1
133.3	9.1	7.1	6.5	7.0	7.9	7.2
134.3	8.7	6.8	7.1	7.3	6.2	8.2
135.3	8.8	8.2	7.9	6.6	6.9	6.2
136.3	8.7	7.7	9.6	7.2	6.5	5.0
137.3	8.2	9.8	8.2	7.1	5.4	4.9
138.3	10.0	8.6	7.2	7.4	5.4	4.6
139.3	8.8	9.0	8.3	8.4	4.3	3.8
140.3	7.5	6.7	11.4	6.8	6.1	5.4
141.3	8.0	6.5	7.3	6.8	6.5	5.2
142.3	7.2	6.6	7.3	5.2	4.5	4.0
143.3	8.7	5.9	6.3	5.6	7.9	5.7
144.3	5.2	6.6	6.1	5.0	5.3	4.3
145.3	5.2	6.4	4.6	4.6	5.3	3.7
146.3	4.0	6.1	5.3	5.8	4.2	5.4
max	11.8	10.8	11.4	12.4	12.0	8.8

Peripheral Rod Oxide (Comanche Peak 2, FA JW07, FAI



JW07, FACE 1)



12 — FR14

