

Peripheral Oxide

Utility: Comanche Peak 2

Assembly: JJ83

Face: 3

Date: 15-Oct-2003

Elevation	R02	R06	R08	R10	R12	R14
6.2	6.8	5.1	5.1	5.7	6.1	5.9
7.2	5.5	5.3	4.4	7.2	7.6	5.4
8.2	5.3	5.7	6.2	6.2	5.5	6.1
9.2	4.7	5.1	5.4	6.7	5.4	6.1
10.2	4.6	4.3	5.1	7.2	5.9	7.6
11.2	6.1	5.3	5.6	6.6	6.1	5.9
12.2	5.4	6.0	5.6	6.6	6.9	6.8
13.2	6.2	5.7	6.5	7.2	7.0	7.3
14.2	4.8	6.1	8.2	6.1	6.9	7.1
15.2	4.8	7.2	6.7	6.3	7.3	7.4
16.2	5.2	6.8	8.7	6.2	7.1	8.0
17.2	5.1	5.9	7.4	6.1	6.9	7.0
18.2	5.1	6.6	7.5	6.5	7.6	7.2
19.2	6.9	6.4	8.0	5.7	6.9	7.2
20.2	5.2	6.5	7.0	6.0	6.9	6.6
21.2	5.7	6.6	7.6	5.8	7.2	8.3
22.2	5.6	6.8	7.3	5.7	7.2	8.4
23.2	4.5	7.3	7.7	5.8	6.2	6.9
29.7	6.5	6.2	7.9	4.8	6.3	7.0
30.7	6.2	5.9	8.1	4.6	5.8	6.7
31.7	7.6	6.6	7.9	4.6	5.6	6.7
32.7	5.9	6.8	6.8	3.8	5.9	7.1
33.7	5.6	5.6	6.9	4.6	5.6	6.5
34.7	7.6	7.0	7.2	4.9	6.4	6.7
35.7	6.6	7.2	6.5	4.7	5.6	7.0
36.7	9.0	8.5	6.5	5.1	6.0	6.4
37.7	7.3	8.2	6.9	4.9	5.9	5.6
38.7	6.4	7.1	7.4	4.9	5.5	6.0
39.7	7.8	8.2	8.0	6.0	5.9	6.6
40.7	7.1	7.5	7.4	5.1	5.7	6.3
41.7	7.4	7.7	8.1	5.1	5.7	6.5
42.7	7.2	9.2	8.4	5.3	7.1	7.9
43.7	8.4	8.0	7.3	5.0	6.5	7.6
50.3	5.3	6.0	8.4	4.7	5.0	6.7
51.3	5.8	5.3	7.1	4.0	4.9	7.0
52.3	5.2	5.7	7.4	3.8	4.8	6.7
53.3	5.2	5.6	7.1	4.0	4.6	8.2
54.3	5.1	5.6	7.7	3.4	5.3	7.2
55.3	5.7	4.9	7.7	3.8	5.5	6.4
56.3	6.8	5.7	7.2	4.7	5.9	7.2
57.3	7.0	6.8	6.7	3.8	5.4	6.6
58.3	7.0	5.9	8.2	4.2	6.0	6.5

59.3	5.6	5.7	7.1	4.3	6.0	6.9
60.3	5.2	6.7	6.7	4.2	5.8	7.3
61.3	6.5	6.9	8.3	4.8	6.1	7.4
62.3	6.4	6.4	7.6	5.0	6.0	6.7
63.3	6.7	7.7	7.7	5.2	6.4	7.8
64.3	5.0	8.2	8.0	6.2	6.9	8.0

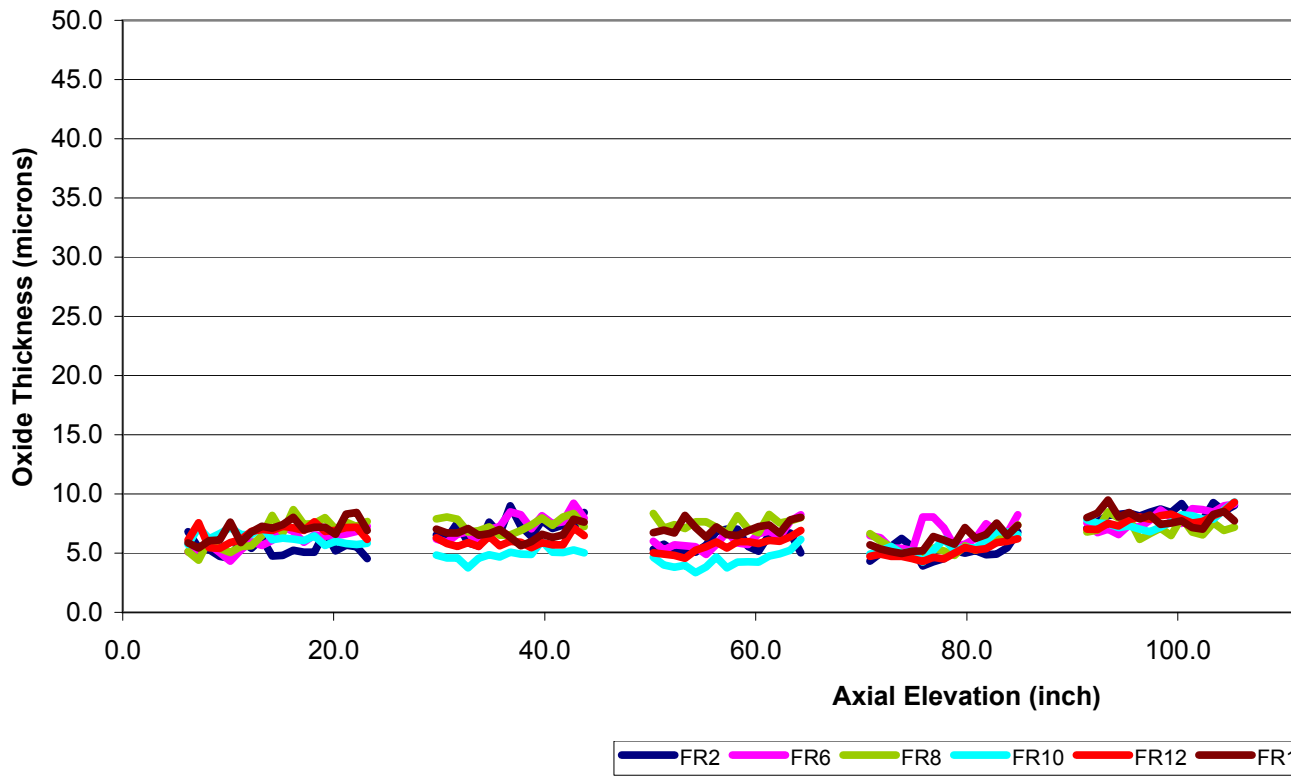
70.8	4.3	6.5	6.7	4.9	4.7	5.7
71.8	5.0	6.3	6.0	5.2	4.9	5.4
72.8	5.6	5.4	5.5	5.6	4.7	5.1
73.8	6.2	5.4	5.0	5.0	4.7	5.0
74.8	5.6	5.2	5.0	5.2	4.5	5.2
75.8	3.9	8.1	4.8	4.2	4.3	5.2
76.8	4.3	8.1	5.4	5.2	4.6	6.4
77.8	4.5	7.1	5.2	6.2	4.5	6.1
78.8	5.2	5.6	4.8	5.3	5.0	5.8
79.8	5.0	5.8	5.6	5.5	5.5	7.2
80.8	5.2	6.2	5.2	5.4	5.3	6.2
81.8	4.9	7.5	6.1	6.1	5.4	6.6
82.8	4.9	6.8	6.1	6.8	5.9	7.5
83.8	5.5	6.7	6.5	6.8	6.0	6.5
84.8	6.8	8.2	7.4	6.6	6.2	7.4

91.4	7.1	7.5	6.8	7.8	7.0	8.0
92.4	7.6	6.7	6.9	7.5	7.0	8.4
93.4	8.2	7.0	8.5	7.5	7.5	9.5
94.4	8.3	6.6	8.0	7.2	7.3	8.1
95.4	8.4	7.4	7.9	7.3	7.8	8.4
96.4	8.1	7.2	6.2	7.0	8.1	7.9
97.4	8.5	7.8	6.7	6.8	7.9	8.2
98.4	8.7	8.7	7.1	7.2	8.2	7.4
99.4	8.4	8.0	6.5	7.6	8.3	7.6
100.4	9.2	7.5	8.0	8.3	7.9	7.7
101.4	8.0	8.8	6.8	8.2	7.6	7.2
102.4	7.8	8.7	6.5	7.9	7.7	7.0
103.4	9.3	8.5	7.6	7.9	8.2	8.3
104.4	8.6	9.0	6.9	8.7	8.6	8.5
105.4	9.0	9.1	7.2	9.3	9.3	7.7

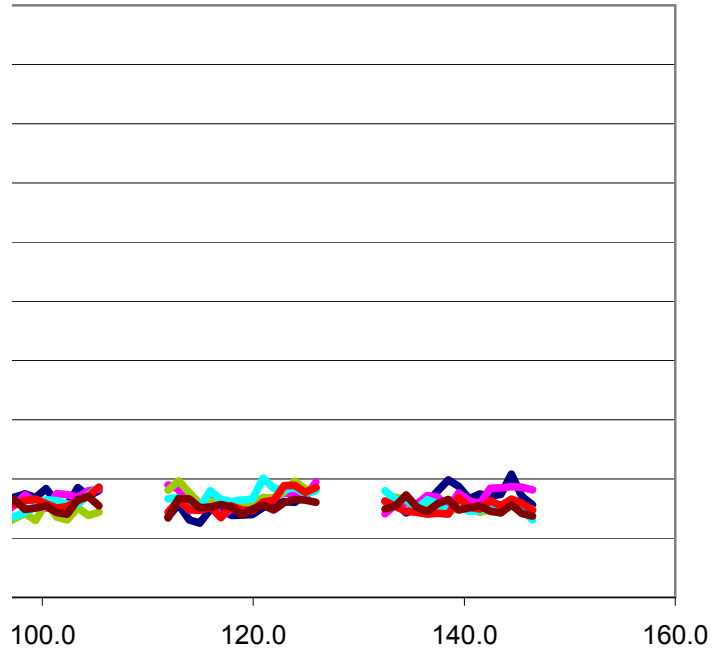
111.9	6.8	9.5	9.1	8.3	7.2	6.7
112.9	7.9	9.1	9.8	8.4	8.2	8.4
113.9	6.5	7.4	8.9	7.7	7.4	8.3
114.9	6.3	7.5	7.9	7.6	7.3	7.6
115.9	7.4	8.3	8.1	9.0	7.6	7.6
116.9	7.5	6.8	7.8	8.3	6.7	7.8
117.9	6.9	7.5	7.7	8.1	7.7	7.7
118.9	7.0	8.1	7.8	8.2	7.4	7.0
119.9	7.0	8.2	7.8	8.3	7.3	7.5
120.9	7.6	8.2	8.4	10.1	8.1	7.8
121.9	7.9	8.4	8.4	9.2	8.2	7.4

122.9	8.1	8.9	8.9	9.1	9.4	8.0
123.9	8.0	8.6	9.8	9.3	9.5	8.3
124.9	8.7	8.5	9.2	8.8	8.9	8.2
125.9	9.2	9.7	9.0	9.0	9.3	8.0
132.5	8.1	7.1	8.1	9.0	8.1	7.5
133.5	7.9	7.9	8.5	8.3	7.7	7.7
134.5	7.1	8.0	8.2	8.3	7.3	8.6
135.5	7.6	7.9	7.5	7.5	7.2	7.6
136.5	8.0	8.6	7.7	8.2	7.0	7.2
137.5	9.0	8.5	7.8	7.9	7.1	7.9
138.5	9.9	7.5	7.3	7.3	7.0	8.3
139.5	9.4	8.8	7.5	7.8	8.4	7.4
140.5	8.3	8.2	7.6	7.3	7.6	7.6
141.5	8.7	7.9	7.2	7.3	7.5	7.7
142.5	8.6	9.2	7.4	8.1	8.2	7.3
143.5	8.7	9.3	7.1	7.3	7.7	7.1
144.5	10.4	9.4	8.2	7.8	8.3	7.8
145.5	8.5	9.3	7.5	7.4	8.0	7.1
146.5	7.8	9.1	7.4	6.5	7.4	6.9
max	10.4	9.7	9.8	10.1	9.5	9.5

Peripheral Rod Oxide (Comanche Peak 2, FA JJ83, FA)



JJ83, FACE 3)



R12 FR14

