

Peripheral Oxide

Utility: Comanche Peak 2

Assembly: HH80

Face: 1

Date: 17-Oct-2003

Elevation	R02	R06	R08	R10	R12	R14
6.2	11.0	10.7	7.8	10.8	8.0	6.9
7.2	12.0	12.1	8.2	10.3	8.5	8.4
8.2	12.7	12.9	9.8	11.1	10.1	9.7
9.2	12.9	12.8	13.9	12.1	11.3	9.8
10.2	13.5	13.4	13.9	11.9	10.8	10.5
11.2	14.5	14.7	12.3	12.4	11.4	10.6
12.2	16.2	16.3	18.0	12.5	11.8	11.5
13.2	15.1	15.9	14.6	14.9	13.2	11.2
14.2	14.6	16.1	14.1	14.8	12.9	12.3
15.2	15.1	16.0	14.5	13.9	13.2	11.7
16.2	15.5	16.9	15.4	14.1	15.7	12.9
17.2	16.3	17.3	14.7	13.9	14.1	13.1
18.2	15.7	16.8	15.4	14.8	14.5	14.7
19.2	16.5	17.5	16.9	14.0	15.7	14.4
20.2	17.9	18.3	14.5	15.2	15.8	14.5
21.2	16.9	16.9	14.2	16.0	16.1	15.9
22.2	17.6	18.5	13.9	16.8	16.2	14.7
23.2	16.8	15.7	13.9	16.5	14.2	12.6
29.7	15.1	13.1	13.0	15.4	12.3	12.6
30.7	14.1	15.3	13.6	14.8	14.2	12.2
31.7	15.9	14.5	14.3	15.2	13.7	12.8
32.7	18.1	14.6	14.3	16.4	13.0	12.3
33.7	16.3	15.7	14.8	14.4	13.8	13.9
34.7	16.6	16.2	15.1	14.0	14.7	15.1
35.7	18.2	18.5	14.8	17.6	13.5	15.4
36.7	16.2	17.1	15.5	17.8	14.1	15.8
37.7	18.0	17.4	16.4	16.8	15.0	16.9
38.7	17.6	18.8	16.0	16.0	15.9	17.9
39.7	18.3	19.9	16.2	17.6	17.0	17.8
40.7	18.3	18.4	16.0	18.1	15.8	16.7
41.7	17.4	18.7	16.4	18.5	16.7	17.5
42.7	17.7	19.2	17.0	16.7	17.5	18.0
43.7	20.0	18.7	16.7	17.6	17.8	19.3
50.3	18.4	19.4	18.3	16.8	16.7	15.2
51.3	19.4	18.2	20.7	17.8	17.5	15.5
52.3	19.4	19.9	17.6	17.2	16.4	16.1
53.3	21.2	19.8	18.3	17.1	18.1	18.5
54.3	20.4	20.3	18.4	19.3	18.2	17.4
55.3	23.0	19.9	18.8	18.9	16.8	17.6
56.3	24.4	20.5	19.8	20.6	17.5	19.2
57.3	25.9	21.5	19.2	18.3	17.4	19.7

58.3	23.6	23.1	18.7	18.6	17.4	19.2
59.3	24.6	22.7	20.5	20.7	18.3	19.7
60.3	23.0	24.3	20.5	20.2	17.6	19.5
61.3	24.6	23.6	21.5	21.0	19.3	20.7
62.3	24.0	23.8	22.0	20.8	17.9	20.1
63.3	23.6	24.2	21.0	19.8	18.0	19.8
64.3	25.2	24.9	22.6	21.1	18.4	19.6

70.8	20.0	18.8	19.5	18.2	17.3	18.4
71.8	22.3	20.4	19.0	18.6	19.5	18.8
72.8	23.6	20.5	18.5	20.1	18.7	20.6
73.8	24.4	20.7	18.8	22.5	18.9	20.9
74.8	26.1	20.8	20.3	22.5	20.8	23.3
75.8	27.6	22.5	20.1	22.6	20.1	23.5
76.8	26.0	24.0	21.4	23.8	19.5	24.2
77.8	28.4	24.2	22.5	26.5	20.7	25.8
78.8	28.8	25.0	23.2	25.8	20.0	25.6
79.8	30.1	25.1	23.7	26.7	20.6	27.1
80.8	30.1	25.8	24.8	26.8	20.7	27.1
81.8	27.6	26.6	25.3	25.5	20.8	26.4
82.8	28.4	27.3	23.8	27.7	22.5	25.7
83.8	26.6	25.5	24.3	25.7	22.0	24.8
84.8	27.2	24.8	25.2	23.8	22.2	25.4

91.4	25.5	24.5	23.7	24.4	21.9	21.7
92.4	26.9	26.2	24.7	25.4	22.4	23.1
93.4	34.0	27.5	24.2	25.2	23.4	27.4
94.4	40.3	29.3	23.7	27.1	24.3	31.2
95.4	46.0	28.9	24.1	29.0	24.2	34.9
96.4	52.4	29.0	25.8	29.9	24.9	37.1
97.4	54.5	30.4	27.5	33.4	23.5	39.3
98.4	56.3	33.6	28.4	34.6	24.9	40.2
99.4	54.9	36.4	26.8	35.2	25.4	41.4
100.4	53.9	37.0	26.1	33.9	25.0	41.3
101.4	54.8	36.1	27.2	34.8	27.0	40.3
102.4	51.6	35.4	27.6	32.7	26.8	38.3
103.4	45.6	33.8	26.4	30.3	26.0	35.4
104.4	39.5	31.2	26.2	29.8	28.2	32.0
105.4	35.8	29.1	26.4	29.1	27.0	30.3

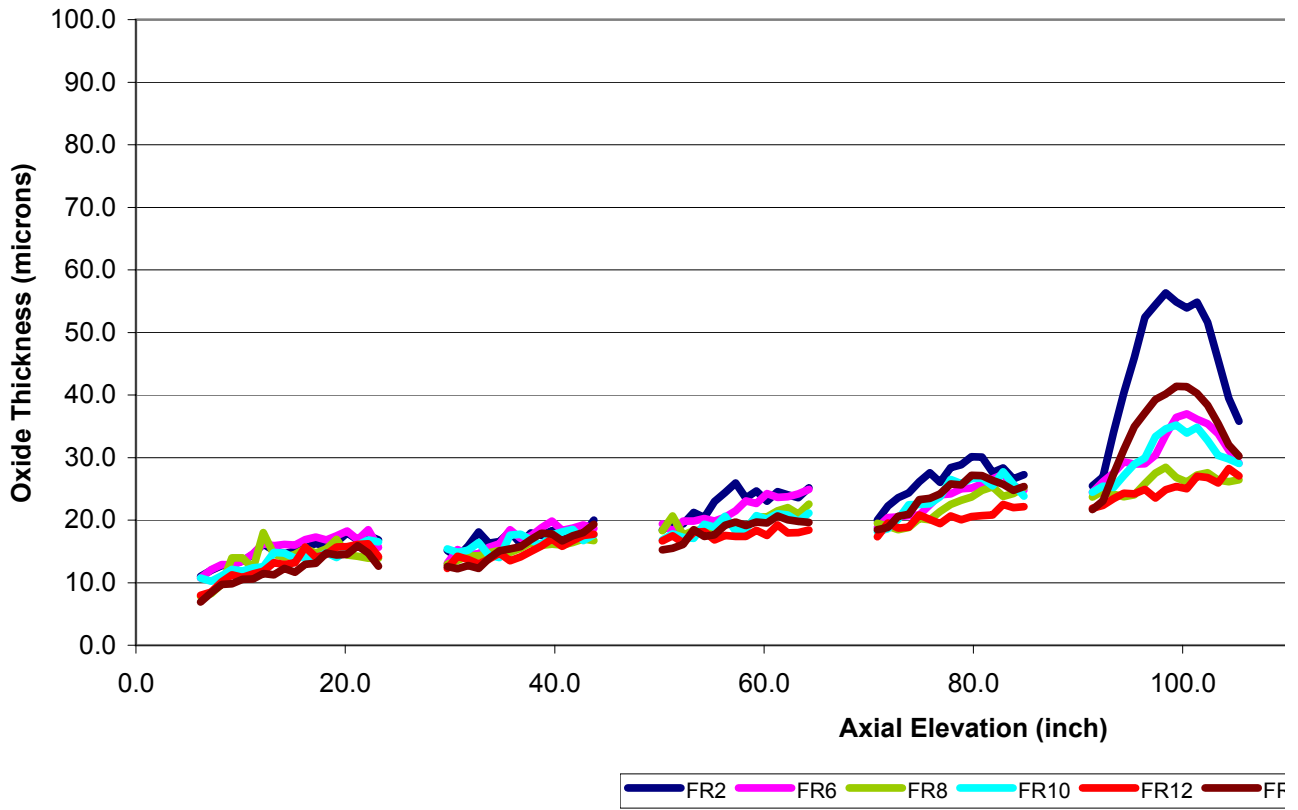
111.9	39.2	29.7	27.6	31.5	26.0	31.9
112.9	49.9	33.3	29.5	29.8	27.0	38.9
113.9	66.5	36.2	29.8	35.8	26.3	49.0
114.9	79.7	41.3	31.1	41.8	26.3	58.2
115.9	83.8	46.9	32.8	49.0	27.0	65.3
116.9	87.0	50.3	31.9	53.6	28.7	72.8
117.9	90.2	51.5	30.2	53.9	30.9	75.4
118.9	91.6	54.5	29.4	55.9	30.9	77.3
119.9	90.2	56.8	32.0	56.5	34.9	77.2

120.9	90.3	59.0	31.5	53.6	33.0	74.0
121.9	87.4	57.8	30.5	50.7	35.2	67.7
122.9	75.9	54.5	30.0	45.0	34.0	61.3
123.9	62.7	50.2	31.9	39.3	31.2	53.9
124.9	51.8	45.8	32.8	35.6	30.2	47.2
125.9	44.9	41.2	32.1	33.5	29.2	39.0

132.5	34.6	31.7	26.2	27.5	23.1	29.6
133.5	42.0	32.8	26.5	28.7	23.4	34.2
134.5	43.2	33.1	26.3	28.4	22.9	37.9
135.5	43.8	33.4	25.9	28.5	23.5	38.2
136.5	42.2	33.4	24.2	28.7	24.0	38.1
137.5	38.7	31.3	23.6	26.9	23.4	33.4
138.5	37.4	29.7	22.9	26.6	23.5	31.3
139.5	31.0	26.3	22.5	23.2	21.0	28.7
140.5	27.5	24.3	23.1	20.8	19.9	23.2
141.5	24.4	23.4	22.6	21.0	19.8	21.7
142.5	23.1	22.5	21.9	19.5	17.7	19.7
143.5	22.9	22.9	21.1	20.3	18.1	19.0
144.5	21.8	20.1	19.6	21.8	17.3	19.2
145.5	18.1	19.5	16.8	17.2	15.9	15.4
146.5	17.6	18.9	17.1	17.1	17.7	14.5

max	91.6	59.0	32.8	56.5	35.2	77.3
-----	------	------	------	------	------	------

Peripheral Rod Oxide (Comanche Peak 2, FA HH80, F)



\ HH80, FACE 1)

