

Peripheral Oxide

Utility: Comanche Peak 2

Assembly: GG19

Face: 4

Date: 20-Oct-2003

Elevation	R02	R06	R08	R10	R12	R14
6.2	11.0	11.1	11.8	12.1	11.3	10.6
7.2	12.4	12.5	12.0	13.8	12.5	11.8
8.2	12.8	13.8	12.2	13.7	13.4	13.2
9.2	13.5	14.6	12.7	14.7	13.2	12.9
10.2	14.4	15.1	13.5	14.7	14.5	13.8
11.2	13.9	15.8	14.7	15.6	13.6	13.0
12.2	14.2	15.8	15.0	15.5	13.8	15.2
13.2	15.6	15.7	16.1	15.8	14.6	16.3
14.2	15.5	17.4	16.2	15.8	15.1	15.3
15.2	16.8	17.4	16.6	16.6	15.8	14.5
16.2	15.9	16.7	15.7	16.6	15.5	14.6
17.2	16.1	16.4	16.9	18.1	16.3	15.0
18.2	15.8	16.7	17.0	18.3	16.7	16.1
19.2	16.2	18.1	16.0	19.3	17.0	16.0
20.2	16.6	18.8	17.6	21.6	19.3	17.2
21.2	17.2	18.7	15.9	18.8	18.4	17.0
22.2	16.1	18.2	16.1	18.3	17.8	16.3
23.2	16.5	18.9	16.9	17.9	16.6	19.0
29.7	15.9	16.0	17.2	19.3	18.4	18.6
30.7	16.5	17.6	18.4	19.8	18.7	18.2
31.7	16.8	18.5	19.2	20.6	21.7	18.0
32.7	16.4	19.3	20.5	21.3	19.1	18.7
33.7	16.6	21.2	20.9	21.4	20.3	19.3
34.7	17.0	19.7	19.1	20.6	19.4	19.1
35.7	18.5	19.6	19.2	20.8	20.0	19.1
36.7	18.2	21.4	21.1	21.6	20.2	20.5
37.7	19.1	19.7	19.4	21.5	21.1	19.4
38.7	18.9	20.5	19.8	21.7	20.5	19.6
39.7	18.2	20.4	19.4	22.1	19.7	22.1
40.7	18.8	20.2	18.9	22.7	20.8	21.4
41.7	19.9	23.5	19.7	23.0	22.4	21.5
42.7	19.7	20.7	19.6	22.5	21.3	20.5
43.7	17.2	20.3	19.5	22.5	20.3	19.3
50.3	16.4	19.7	19.2	22.5	20.0	19.4
51.3	16.5	20.8	19.5	23.2	20.6	20.7
52.3	17.1	21.9	20.1	24.2	21.6	19.9
53.3	16.8	22.9	21.5	24.6	22.3	20.6
54.3	18.1	23.8	21.8	26.6	22.2	22.2
55.3	18.6	24.5	23.3	25.9	23.0	21.8
56.3	19.8	23.7	22.5	26.0	22.6	21.8
57.3	21.8	24.2	22.9	25.9	23.1	21.7
58.3	21.6	24.5	22.9	27.1	24.2	24.2

59.3	19.8	24.3	21.4	27.1	24.4	22.7
60.3	20.2	25.1	21.8	27.5	23.9	23.1
61.3	19.8	25.0	22.4	27.3	24.5	24.3
62.3	21.0	24.8	22.7	27.0	25.0	23.9
63.3	21.7	25.2	22.1	27.6	24.8	25.4
64.3	21.4	25.0	22.3	27.6	24.4	26.5

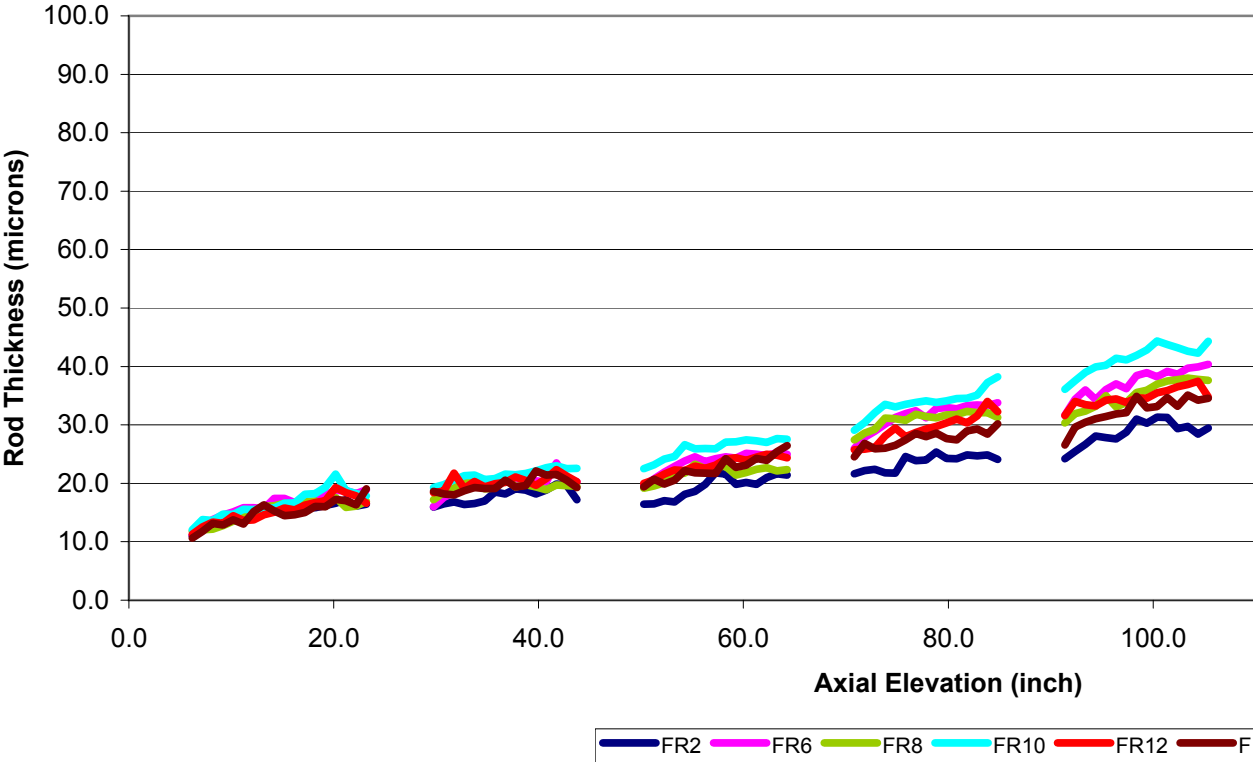
70.8	21.6	26.0	27.4	29.1	25.8	24.5
71.8	22.2	27.9	28.6	30.4	25.9	26.8
72.8	22.4	28.9	29.2	32.1	26.1	25.9
73.8	21.8	30.1	31.2	33.5	28.1	26.0
74.8	21.7	31.3	31.1	33.1	29.4	26.5
75.8	24.6	31.9	30.8	33.5	28.0	27.4
76.8	23.9	32.4	31.8	33.9	28.7	28.5
77.8	24.0	31.2	31.4	34.1	29.3	28.0
78.8	25.3	32.8	31.2	33.8	29.7	28.6
79.8	24.3	33.0	31.7	34.1	30.3	27.6
80.8	24.2	32.8	31.8	34.5	31.0	27.5
81.8	24.9	33.3	32.3	34.6	30.4	29.0
82.8	24.7	33.4	32.1	35.1	31.5	29.3
83.8	24.8	33.3	32.1	37.3	34.0	28.4
84.8	24.1	33.8	31.3	38.2	32.3	30.2

91.4	24.2	31.7	30.4	36.1	31.6	26.6
92.4	25.4	34.4	31.9	37.6	34.0	29.6
93.4	26.7	36.0	32.3	39.0	33.5	30.5
94.4	28.1	34.4	33.2	39.9	33.2	31.1
95.4	27.8	36.1	35.0	40.2	34.2	31.4
96.4	27.6	37.0	33.1	41.4	34.4	31.9
97.4	28.8	36.2	33.8	41.1	33.9	32.1
98.4	31.0	38.4	35.6	41.9	34.6	34.9
99.4	30.3	38.9	35.9	42.8	34.5	32.9
100.4	31.3	38.2	36.9	44.4	35.5	33.1
101.4	31.3	39.2	37.5	43.8	35.9	34.6
102.4	29.4	38.7	37.7	43.2	36.5	33.2
103.4	29.8	39.7	38.0	42.6	36.9	35.1
104.4	28.4	39.9	37.8	42.3	37.4	34.2
105.4	29.5	40.4	37.6	44.3	34.8	34.5

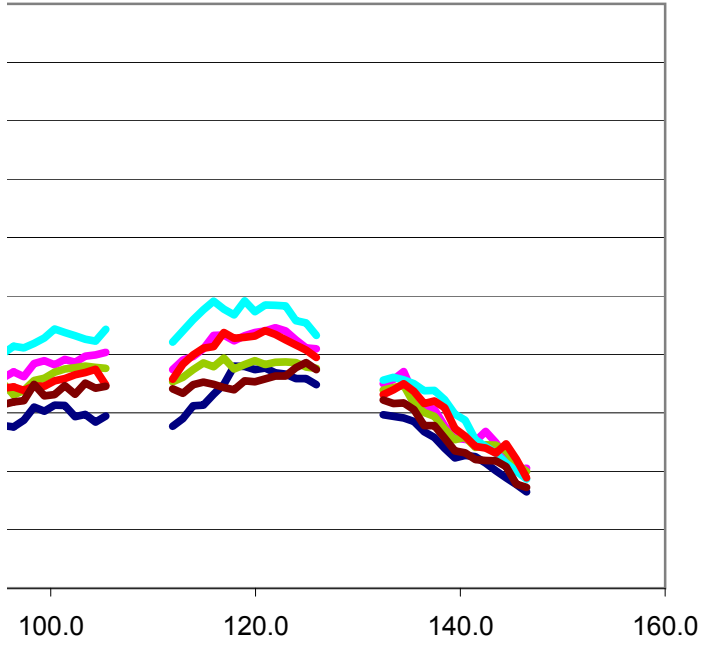
111.9	27.7	37.4	35.4	42.1	35.8	34.1
112.9	29.0	39.0	36.1	44.0	38.3	33.4
113.9	31.2	39.7	37.4	46.0	39.9	34.8
114.9	31.3	41.0	38.6	47.7	41.1	35.3
115.9	33.2	43.2	37.9	49.1	41.3	34.9
116.9	34.9	43.3	39.4	47.8	43.8	34.4
117.9	38.0	42.4	37.5	46.8	42.8	34.0
118.9	37.9	43.2	38.3	49.2	42.9	35.5
119.9	37.4	43.8	38.9	47.3	43.2	35.3
120.9	37.7	44.0	38.3	48.5	44.1	35.8
121.9	36.9	44.6	38.7	48.4	43.4	36.3
122.9	36.6	44.0	38.7	48.3	42.5	36.3

123.9	35.9	42.5	38.6	45.8	41.6	37.7
124.9	35.9	41.1	37.8	45.4	40.7	38.6
125.9	34.8	41.0	37.6	43.3	39.5	37.4
132.5	29.7	35.0	33.9	35.6	33.1	32.2
133.5	29.4	35.7	34.4	36.1	34.0	31.6
134.5	29.2	37.1	34.7	35.6	35.0	31.7
135.5	28.5	33.1	31.6	35.0	33.7	30.6
136.5	26.8	31.1	30.1	33.8	31.6	27.8
137.5	25.8	30.6	29.4	33.9	32.0	27.8
138.5	23.9	27.8	27.2	32.3	30.9	25.7
139.5	22.3	25.7	25.4	29.8	27.3	23.5
140.5	22.7	25.5	25.8	28.8	26.0	23.2
141.5	22.5	25.2	24.1	25.4	24.3	22.0
142.5	21.4	26.8	24.5	24.3	24.0	21.9
143.5	20.1	24.9	24.5	23.1	23.1	21.8
144.5	18.9	22.3	23.5	21.4	24.7	20.8
145.5	17.8	20.2	21.2	20.0	22.1	17.8
146.5	16.5	20.5	20.0	18.7	18.9	17.3
max	38.0	44.6	39.4	49.2	44.1	38.6

Peripheral Rod Oxide (Comanche Peak 2, FA GG19, F.



GG19, FACE 4)



FR12 FR14

