

Peripheral Oxide

Utility: Comanche Peak 2

Assembly: GG01

Face: 2

Date: 20-Oct-2003

Elevation	R02	R06	R08	R10	R12	R14
6.2	12.4	13.9	13.2	12.2	12.5	16.6
7.2	12.8	15.8	13.4	14.0	13.6	13.8
8.2	13.5	14.7	13.8	14.6	13.7	14.3
9.2	12.5	13.9	15.0	13.7	13.2	13.8
10.2	13.4	14.2	15.6	13.7	15.6	14.5
11.2	13.7	14.6	14.1	15.3	15.6	16.4
12.2	14.4	14.9	17.3	15.9	14.9	16.5
13.2	15.0	15.2	17.2	15.6	15.2	16.7
14.2	15.5	15.0	16.4	15.6	15.0	16.2
15.2	17.3	15.2	18.9	15.9	15.6	16.1
16.2	15.4	15.5	17.3	14.8	15.1	16.8
17.2	15.7	15.0	18.5	15.4	16.4	17.3
18.2	16.6	15.8	18.8	16.8	19.4	17.0
19.2	16.7	15.6	18.5	17.7	17.7	17.5
20.2	16.5	16.6	18.8	16.4	18.6	19.7
21.2	17.2	16.4	18.3	18.7	19.2	17.6
22.2	16.7	15.9	18.2	17.1	17.7	18.4
23.2	17.2	16.6	18.3	17.7	18.5	18.6
29.7	16.3	15.4	16.3	17.6	17.4	19.2
30.7	16.2	15.8	16.9	16.7	18.5	19.2
31.7	17.6	17.8	17.0	17.0	17.7	20.1
32.7	16.5	18.2	17.3	17.5	17.8	18.6
33.7	16.8	20.3	17.1	17.9	18.3	18.0
34.7	18.0	19.7	20.0	19.7	18.5	17.3
35.7	18.3	18.0	18.8	19.3	19.4	17.9
36.7	19.7	18.3	19.7	19.1	20.0	19.2
37.7	21.3	18.5	19.1	18.9	19.8	20.0
38.7	20.1	19.3	19.0	19.2	19.0	19.5
39.7	20.1	19.9	19.8	19.9	19.9	19.5
40.7	19.9	19.7	17.5	21.4	19.8	20.1
41.7	19.6	19.8	18.9	22.9	19.8	21.6
42.7	19.5	20.2	19.2	20.5	23.1	22.2
43.7	19.0	20.1	18.6	20.0	22.5	19.5
50.3	17.6	18.8	18.9	21.2	21.5	22.0
51.3	17.4	19.9	19.9	20.7	21.5	22.5
52.3	18.0	20.1	19.6	22.5	22.3	22.9
53.3	19.3	21.1	20.8	24.0	23.4	23.5
54.3	19.8	21.4	21.4	23.7	22.6	23.4
55.3	19.9	22.5	22.1	23.4	24.3	25.1
56.3	20.6	23.9	22.2	24.5	25.3	25.2
57.3	20.1	24.1	21.7	23.3	24.7	24.7

58.3	19.8	25.8	24.4	23.9	24.7	25.7
59.3	21.2	24.1	22.4	23.8	23.9	24.2
60.3	21.3	24.9	22.7	24.7	23.3	25.1
61.3	23.3	25.3	23.8	25.6	25.0	25.6
62.3	21.2	24.5	22.8	24.4	25.4	25.7
63.3	21.6	25.3	23.1	23.6	26.0	26.5
64.3	22.7	24.6	24.2	24.6	25.8	25.8

70.8	19.2	19.4	20.5	21.2	23.7	22.8
71.8	20.1	22.1	21.1	22.2	25.2	23.9
72.8	21.1	21.9	22.1	22.1	25.5	25.2
73.8	22.3	23.6	23.0	22.2	26.7	25.4
74.8	23.4	24.7	24.2	24.1	29.1	28.5
75.8	24.9	24.4	25.0	24.9	27.6	29.3
76.8	24.2	25.8	22.8	26.2	28.3	29.6
77.8	24.7	27.5	23.4	28.2	29.2	29.1
78.8	25.9	26.5	24.2	28.3	29.5	30.8
79.8	26.1	28.4	24.7	28.6	29.2	31.7
80.8	26.4	26.9	24.4	28.9	28.9	32.4
81.8	25.6	26.0	24.9	30.1	30.4	32.7
82.8	25.8	28.6	24.6	31.3	32.5	33.4
83.8	26.4	27.4	24.6	30.8	29.5	29.9
84.8	26.6	27.4	24.9	31.4	29.7	29.7

91.4	24.0	26.0	26.6	27.6	27.7	29.5
92.4	25.4	27.9	28.0	29.5	28.7	32.1
93.4	28.0	28.7	32.1	34.5	31.5	36.9
94.4	28.0	28.7	32.5	37.4	34.8	39.9
95.4	28.8	29.6	34.2	41.2	37.2	45.0
96.4	32.0	33.2	37.9	43.6	38.8	49.2
97.4	33.0	31.2	36.8	44.8	39.7	50.3
98.4	35.0	34.4	37.2	46.5	41.3	52.0
99.4	35.7	33.8	37.6	47.2	41.8	52.4
100.4	35.4	31.9	38.3	48.5	42.7	53.0
101.4	35.1	33.9	38.2	48.6	42.9	52.8
102.4	33.4	33.8	37.5	46.6	40.8	49.7
103.4	33.5	33.2	36.7	44.9	40.2	46.6
104.4	33.4	33.0	33.2	41.0	38.7	43.8
105.4	32.8	32.8	31.9	37.7	36.4	40.6

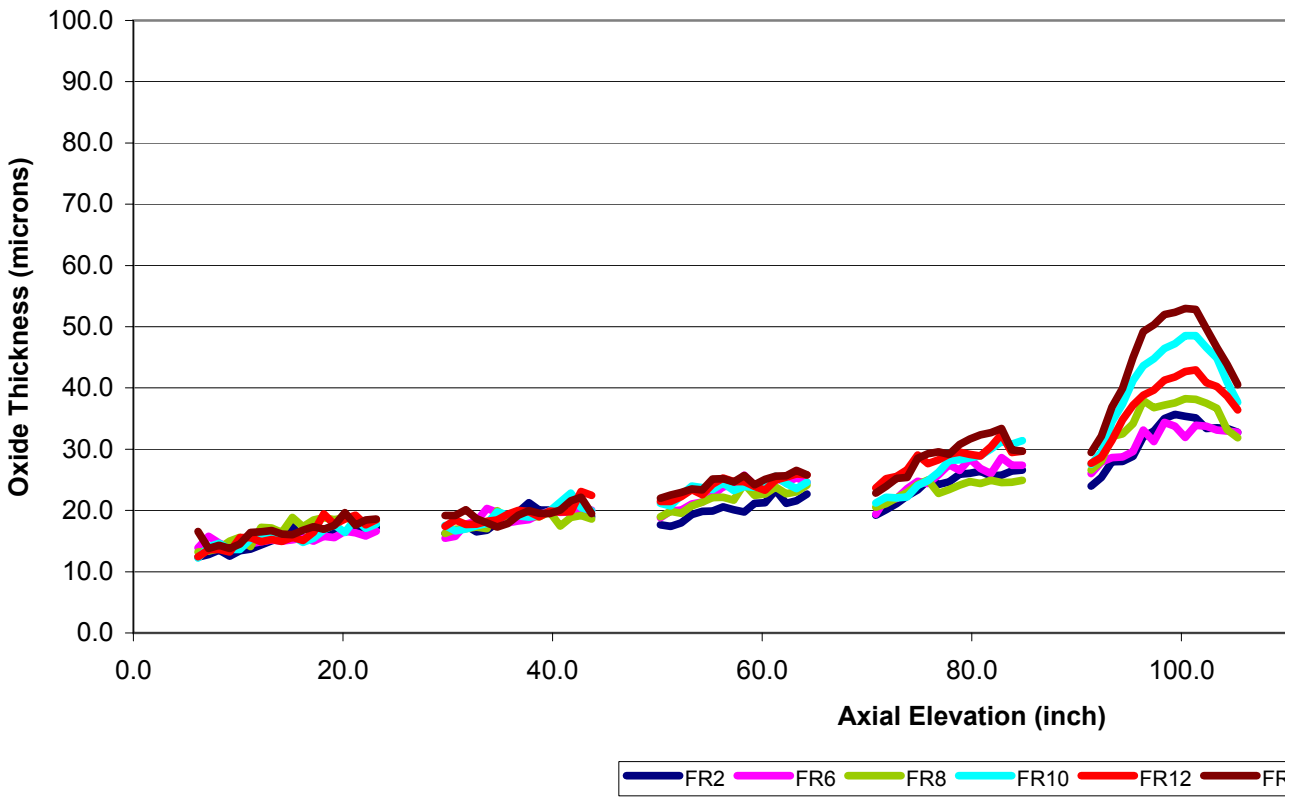
111.9	31.4	32.1	38.9	49.3	41.8	46.3
112.9	34.4	33.6	43.2	52.1	47.0	51.7
113.9	37.8	35.6	45.8	54.5	51.7	55.4
114.9	41.3	38.0	46.5	55.1	55.6	58.6
115.9	42.0	40.2	47.3	55.3	57.9	58.7
116.9	44.1	43.3	49.1	57.1	61.3	59.3
117.9	45.2	44.5	48.1	56.8	63.0	59.1
118.9	44.4	44.8	48.5	55.6	62.3	60.3
119.9	44.3	45.1	51.1	56.6	63.7	63.2

120.9	41.2	45.6	50.3	57.2	62.7	62.5
121.9	39.6	43.0	50.3	53.8	60.7	62.1
122.9	38.5	40.9	49.9	53.2	59.2	60.6
123.9	35.8	38.1	46.8	50.2	54.4	57.7
124.9	34.2	37.6	45.3	47.9	48.1	55.0
125.9	34.8	38.8	45.4	47.1	44.2	50.4

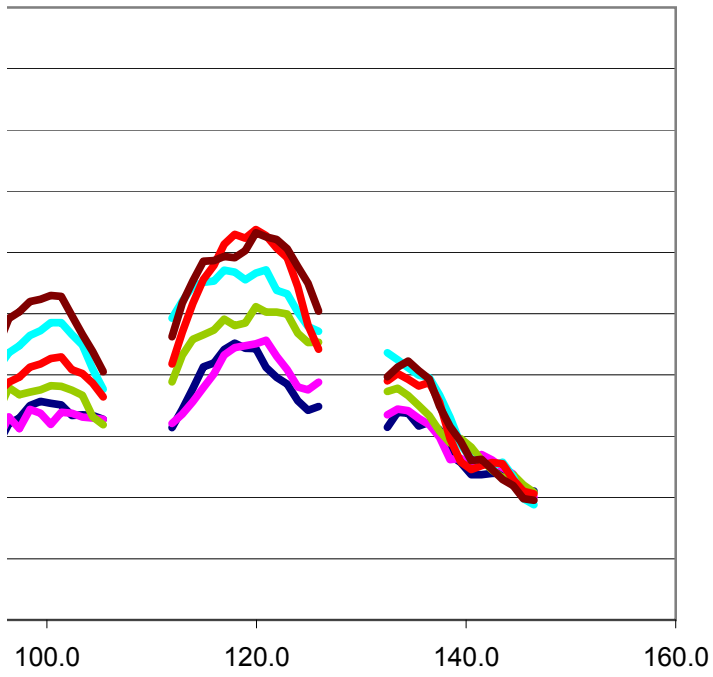
132.5	31.4	33.5	37.3	43.7	39.0	39.7
133.5	33.9	34.4	37.8	42.5	40.2	41.3
134.5	33.7	34.2	36.6	41.2	39.3	42.3
135.5	31.7	32.9	35.0	40.0	38.2	40.7
136.5	32.3	31.9	33.3	39.5	38.8	39.3
137.5	31.0	29.8	30.8	36.7	35.5	34.9
138.5	26.9	26.2	28.9	33.1	29.6	31.6
139.5	25.7	26.4	29.6	28.7	25.8	29.2
140.5	23.7	25.5	28.2	26.2	24.5	26.0
141.5	23.7	27.0	26.1	25.9	25.2	26.2
142.5	23.9	26.1	24.5	25.1	25.7	24.6
143.5	24.0	24.9	23.2	25.8	25.5	22.9
144.5	22.0	23.9	23.7	23.4	22.9	21.9
145.5	21.0	20.8	22.0	19.8	21.0	19.8
146.5	21.0	20.1	20.8	18.8	20.6	19.6

Max	45.17	45.64	51.13	57.17	63.73	63.22
-----	-------	-------	-------	-------	-------	-------

Peripheral Rod Oxide (Comanche Peak 2, FA GG01, FA



.GG01, FACE 2)



FR12 — FR14

