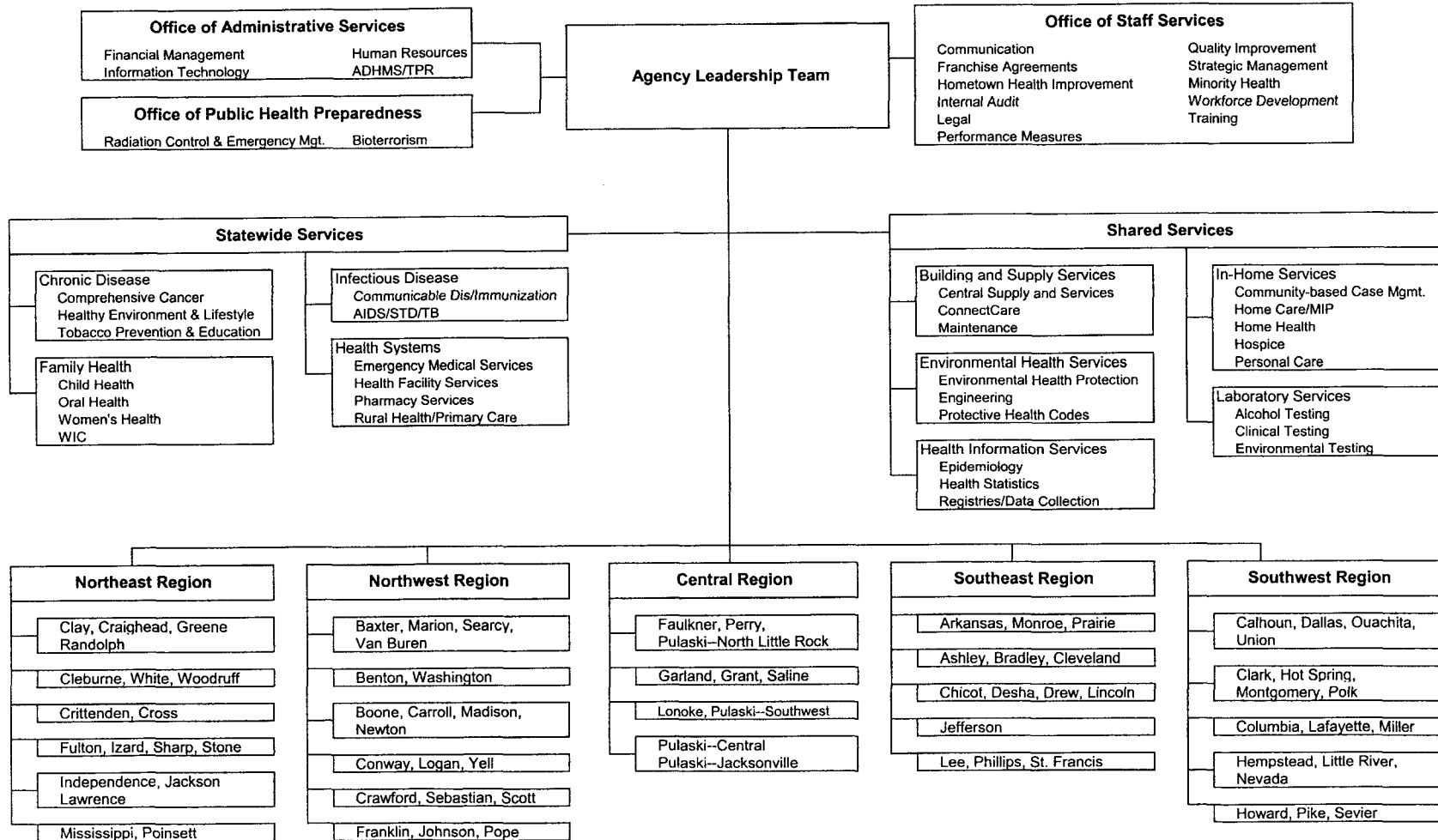


# Arkansas Department of Health

January 2004

Fay Boozman, MD, MPH, Director



**Office of Administrative Services**  
 Financial Management      Human Resources  
 Information Technology      ADHMS/TPR

**Office of Public Health Preparedness**  
 Radiation Control & Emergency Mgt.      Bioterrorism

**Agency Leadership Team**

**Office of Staff Services**  
 Communication      Quality Improvement  
 Franchise Agreements      Strategic Management  
 Hometown Health Improvement      Minority Health  
 Internal Audit      Workforce Development  
 Legal      Training  
 Performance Measures

**Statewide Services**

**Chronic Disease**  
 Comprehensive Cancer  
 Healthy Environment & Lifestyle  
 Tobacco Prevention & Education

**Family Health**  
 Child Health  
 Oral Health  
 Women's Health  
 WIC

**Infectious Disease**  
 Communicable Dis/Immunization  
 AIDS/STD/TB

**Health Systems**  
 Emergency Medical Services  
 Health Facility Services  
 Pharmacy Services  
 Rural Health/Primary Care

**Shared Services**

**Building and Supply Services**  
 Central Supply and Services  
 ConnectCare  
 Maintenance

**Environmental Health Services**  
 Environmental Health Protection  
 Engineering  
 Protective Health Codes

**Health Information Services**  
 Epidemiology  
 Health Statistics  
 Registries/Data Collection

**In-Home Services**  
 Community-based Case Mgmt.  
 Home Care/MIP  
 Home Health  
 Hospice  
 Personal Care

**Laboratory Services**  
 Alcohol Testing  
 Clinical Testing  
 Environmental Testing

**Northeast Region**

Clay, Craighead, Greene, Randolph

Cleburne, White, Woodruff

Crittenden, Cross

Fulton, Izard, Sharp, Stone

Independence, Jackson, Lawrence

Mississippi, Poinsett

**Northwest Region**

Baxter, Marion, Searcy, Van Buren

Benton, Washington

Boone, Carroll, Madison, Newton

Conway, Logan, Yell

Crawford, Sebastian, Scott

Franklin, Johnson, Pope

**Central Region**

Faulkner, Perry, Pulaski--North Little Rock

Garland, Grant, Saline

Lonoke, Pulaski--Southwest

Pulaski--Central  
 Pulaski--Jacksonville

**Southeast Region**

Arkansas, Monroe, Prairie

Ashley, Bradley, Cleveland

Chicot, Desha, Drew, Lincoln

Jefferson

Lee, Phillips, St. Francis

**Southwest Region**

Calhoun, Dallas, Ouachita, Union

Clark, Hot Spring, Montgomery, Polk

Columbia, Lafayette, Miller

Hempstead, Little River, Nevada

Howard, Pike, Sevier