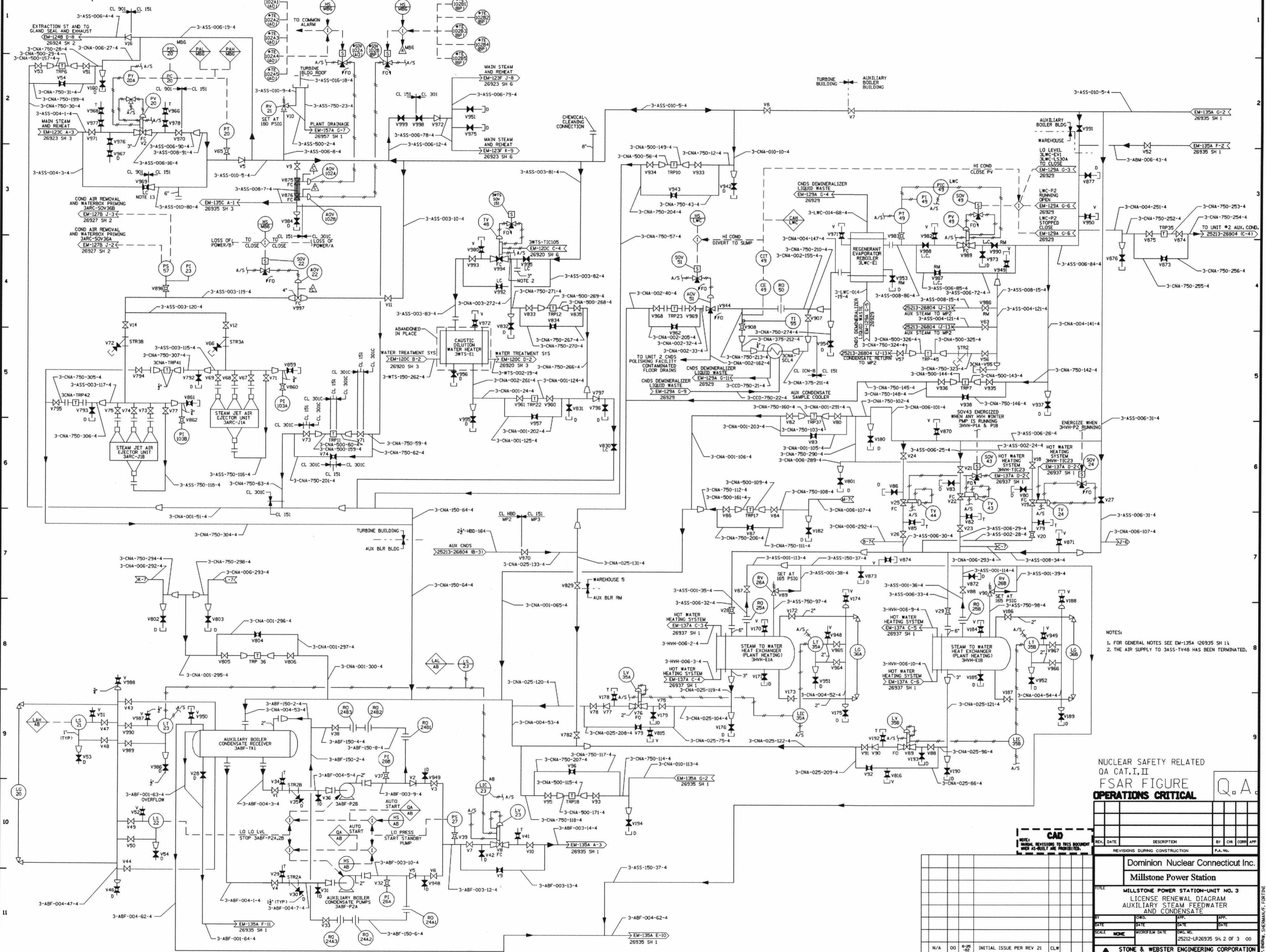


12179-EM-6121



NOTES:  
 1. FOR GENERAL NOTES SEE EM-135A (26935 SH 1)  
 2. THE AIR SUPPLY TO 3ASS-TV48 HAS BEEN TERMINATED.

NUCLEAR SAFETY RELATED  
 QA CAT. I, II  
**FSAR FIGURE**  
**OPERATIONS CRITICAL**

| REV. | DATE | DESCRIPTION | BY | CHK. | APP. |
|------|------|-------------|----|------|------|
|      |      |             |    |      |      |

**Dominion Nuclear Connecticut Inc.**  
**Millstone Power Station**  
 MILLSTONE POWER STATION-UNIT NO. 3  
 LICENSE RENEWAL DIAGRAM  
 AUXILIARY STEAM FEEDWATER  
 AND CONDENSATE

STONE & WEBSTER ENGINEERING CORPORATION  
 BOSTON, MASS.

**CAD**  
 NOTE: REVISIONS TO THIS DOCUMENT  
 MUST BE MADE IN ACCORDANCE WITH  
 THE REVISIONS TO THIS DOCUMENT  
 AND AS-BUILT ARE PROHIBITED.

| REV. | DATE | DESCRIPTION | BY | CHK. | APP. |
|------|------|-------------|----|------|------|
|      |      |             |    |      |      |

25212-26935 SH 2 OF 3  
**S&W DWG. NO.12179-EM-135B**  
 DRAWN BY: \_\_\_\_\_ CHECKED BY: \_\_\_\_\_

*1144*