

N 404500

E 1584000

E 1584500

E 1585000

E 1585500

E 1586000

E 1586500

N 404500

CONRAIL RAILROAD

CONEMAUCH RIVER

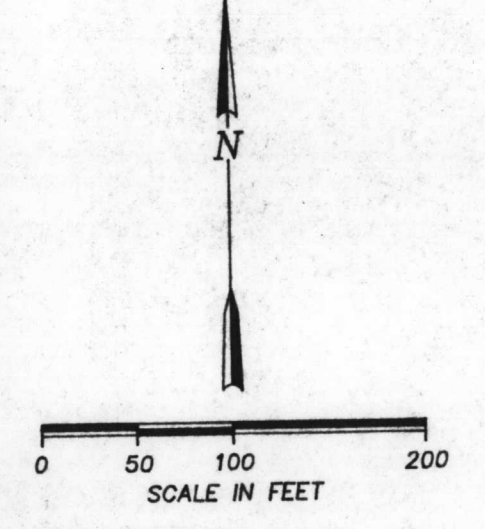
TAILINGS EMBANKMENT

WOODED AREA

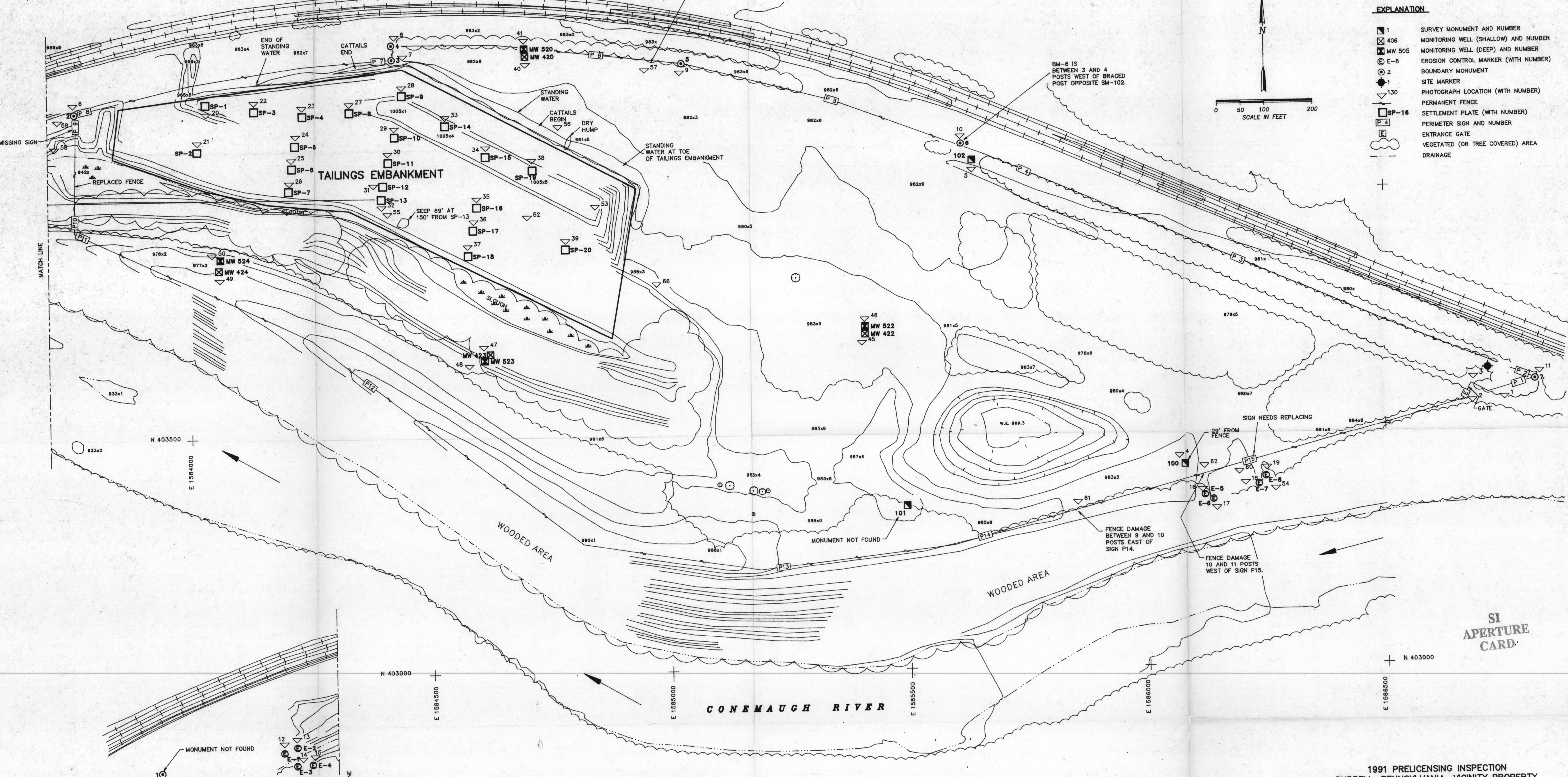
WOODED AREA

WOODCHUCK HOLE UNDER FENCE JUST BEYOND 18 FENCE POSTS EAST OF SIGN P6.

BM-6 IS BETWEEN 3 AND 4 POSTS WEST OF BRACED POST OPPOSITE SM-102.



- EXPLANATION**
- 1 SURVEY MONUMENT AND NUMBER
  - 406 MONITORING WELL (SHALLOW) AND NUMBER
  - 605 MONITORING WELL (DEEP) AND NUMBER
  - E-8 EROSION CONTROL MARKER (WITH NUMBER)
  - 2 BOUNDARY MONUMENT
  - 130 SITE MARKER
  - 130 PHOTOGRAPH LOCATION (WITH NUMBER)
  - SP-16 PERMANENT FENCE
  - P-4 SETTLEMENT PLATE (WITH NUMBER)
  - P-4 PERIMETER SIGN AND NUMBER
  - E-4 ENTRANCE GATE
  - VEGETATED (OR TREE COVERED) AREA
  - DRAINAGE



**NOTES:**

- This drawing is based on drawing number CAN-VP200-10-0104 of the Burrell Township Vicinity Property Burrell Township, Pennsylvania. The original drawing was produced by Morrison-Knudson Engineers Inc. for the U.S. Department of Energy UMTRA Project Office.

9301210297

1991 PRELICENSING INSPECTION  
BURRELL, PENNSYLVANIA, VICINITY PROPERTY,  
SEPTEMBER 25 AND 26, 1991

NO.	DATE	REVISIONS	DWN.	CKD.	SUB.	NO.	DATE	REVISIONS	DWN.	CKD.	SUB.
U.S. DEPARTMENT OF ENERGY GRAND JUNCTION PROJECTS OFFICE, COLORADO											
<b>PLATE 1</b> BURRELL, PENNSYLVANIA INSPECTION DRAWING, 1991 PRELICENSING INSPECTION											
DRAWN C.M. 8/19/91						PROJECT NO. ENG-111-0010-00-000					
CHECKED M.P. 8/19/91						DWG. NO. E0086500					
REVIEWED C.S.G. 8/19/91						SHT. OF 001 001					
CN Geotech, Inc.											

SI  
APERTURE  
CARD

9301210297