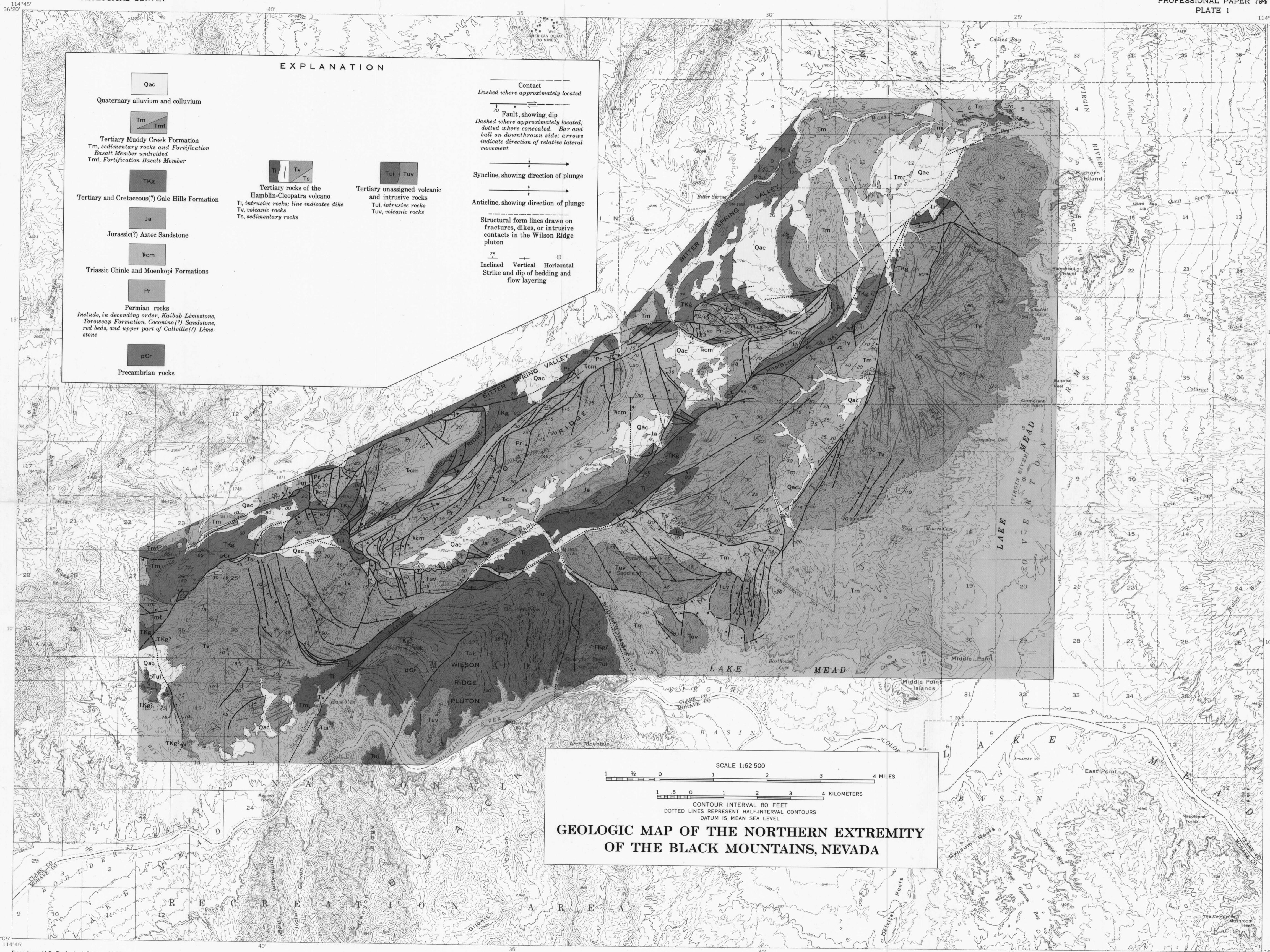


**EXPLANATION**

<p><b>Qac</b> Quaternary alluvium and colluvium</p> <p><b>Tm</b> Tertiary Muddy Creek Formation <i>Tm</i>, sedimentary rocks and Fortification Basalt Member undivided <i>Tmf</i>, Fortification Basalt Member</p> <p><b>TKg</b> Tertiary and Cretaceous(?) Gale Hills Formation</p> <p><b>Ja</b> Jurassic(?) Aztec Sandstone</p> <p><b>fcm</b> Triassic Chinle and Moenkopi Formations</p> <p><b>Pr</b> Permian rocks <i>Include, in descending order, Kaibab Limestone, Toroweap Formation, Coconino(?) Sandstone, red beds, and upper part of Calville(?) Limestone</i></p> <p><b>pCr</b> Precambrian rocks</p>	<p><b>Ti</b> <b>Tv</b> <b>Ts</b> Tertiary rocks of the Hamblin-Cleopatra volcano <i>Ti</i>, intrusive rocks; line indicates dike <i>Tv</i>, volcanic rocks <i>Ts</i>, sedimentary rocks</p> <p><b>Tul</b> <b>Tuv</b> Tertiary unassigned volcanic and intrusive rocks <i>Tul</i>, intrusive rocks <i>Tuv</i>, volcanic rocks</p>	<p><b>Contact</b> <i>Dashed where approximately located</i></p> <p><b>Fault, showing dip</b> <i>Dashed where approximately located; dotted where concealed. Bar and ball on downthrown side; arrows indicate direction of relative lateral movement</i></p> <p><b>Syncline, showing direction of plunge</b></p> <p><b>Anticline, showing direction of plunge</b></p> <p><b>Structural form lines drawn on fractures, dikes, or intrusive contacts in the Wilson Ridge pluton</b></p> <p><b>Inclined Vertical Horizontal</b> Strike and dip of bedding and flow layering</p>
--	--	---



SCALE 1:62 500

1 1/2 0 1 2 3 4 MILES

1 5 0 1 2 3 4 KILOMETERS

CONTOUR INTERVAL 80 FEET  
DOTTED LINES REPRESENT HALF-INTERVAL CONTOURS  
DATUM IS MEAN SEA LEVEL

**GEOLOGIC MAP OF THE NORTHERN EXTREMITY  
OF THE BLACK MOUNTAINS, NEVADA**

Base from U.S. Geological Survey, 1953:  
Hoover Dam, Muddy Peak,  
Overton Beach, Virgin Basin

D-01