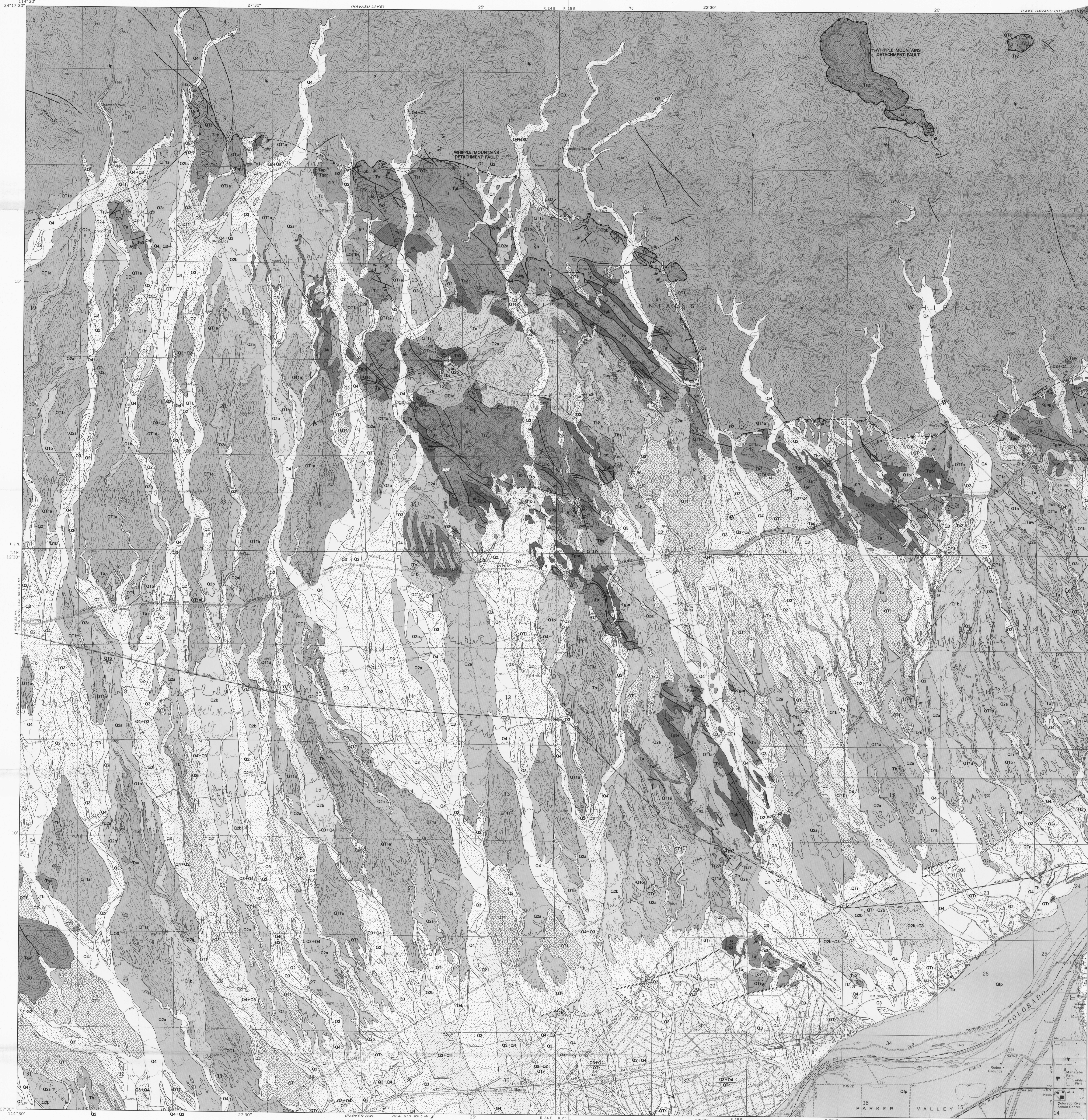
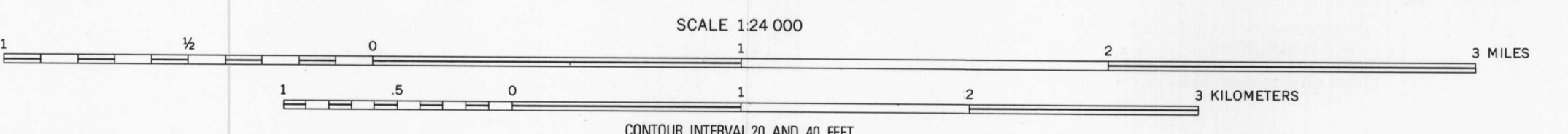


D-01B

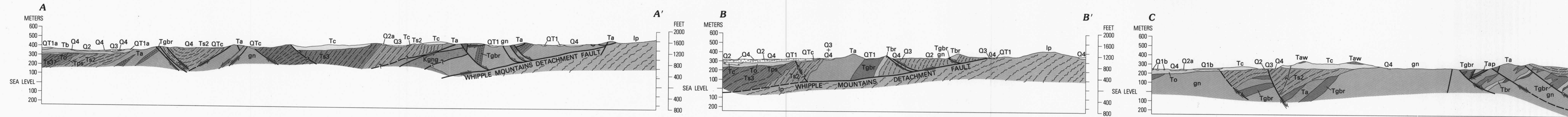
DEPARTMENT OF THE INTERIOR  
UNITED STATES GEOLOGICAL SURVEY



Base from U.S. Geological Survey  
Parker, Parker NW, Whipple Mts. SW,  
and Whipple Wash, 1970



CONTOUR INTERVAL 20 AND 40 FEET  
DOTTED LINES REPRESENT 10-FOOT CONTOURS  
NATIONAL GEODESIC VERTICAL DATUM 1929



GEOLOGIC MAP OF THE PARKER NW, PARKER, AND PARTS OF THE WHIPPLE MOUNTAINS SW AND WHIPPLE WASH QUADRANGLES, CALIFORNIA AND ARIZONA

By  
D. D. Dickey, W. J. Carr, and W. B. Bull

1980