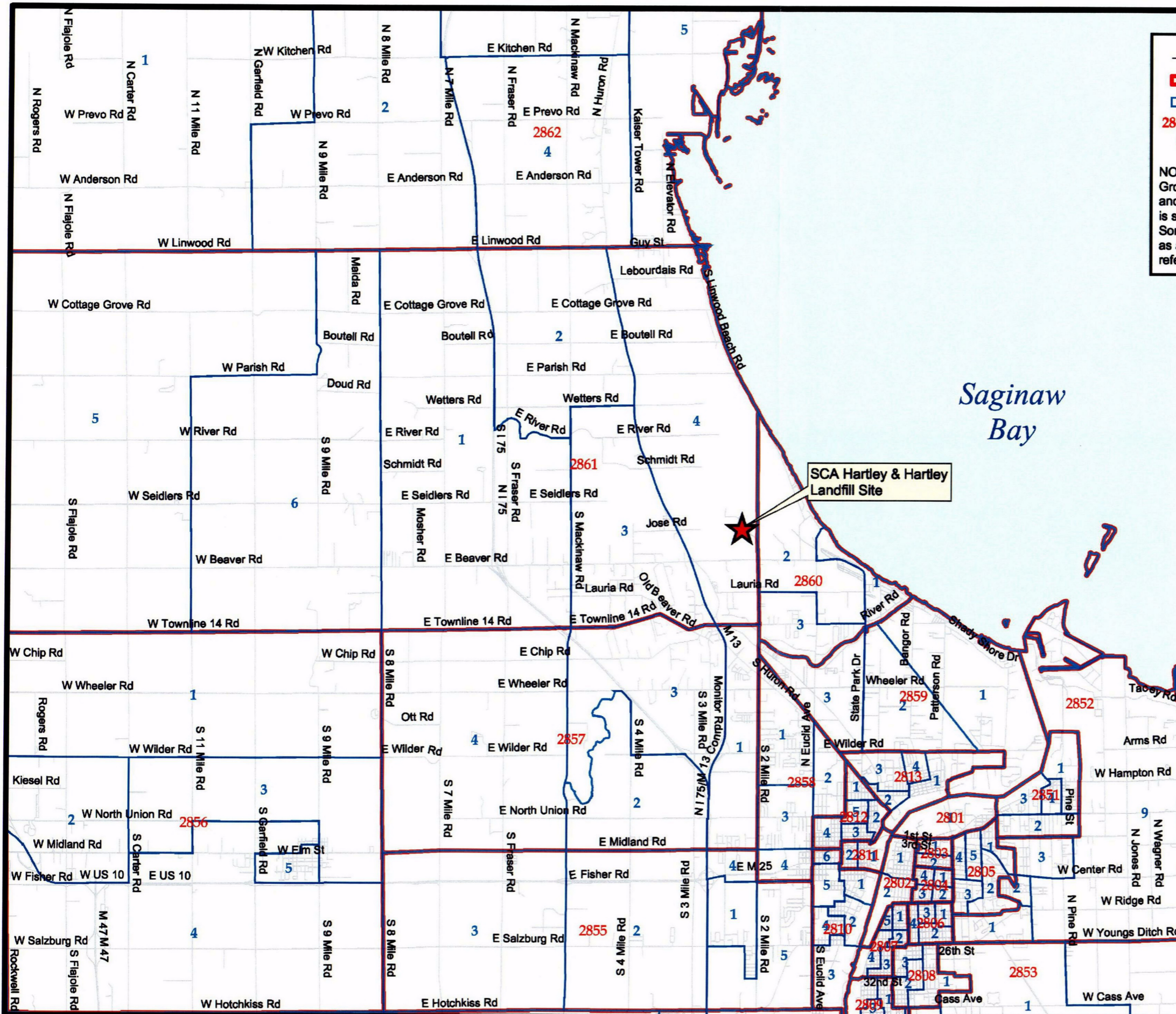


FIGURE 3-3 USGS 7.5' TOPOGRAPHIC MAP

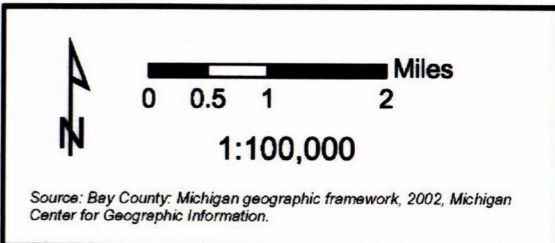
SCA HARTLEY & HARTLEY LANDFILL SITE
KAWKAWLIN TOWNSHIP, MICHIGAN

DRAWN BY:	C. HANKLEY
APPROVED BY:	J. WEDEKIND
PROJECT NO.	6115.04
FILE NO.	TOPO_24K.MXD
DATE:	OCTOBER 2003



— Local Roads
 ■ Census Tract Boundaries
 □ Block Group Boundaries
 2860 Census Tract Number
 4 Block Group Number

NOTE: The US Census Bureau uses the terms "Tracts" and "Block Groups" to refer to distinct geographic areas that are used to collect and tabulate census information. A "Tract" (shown in red on this map) is subdivided into "Block Groups" (shown in blue on this map). Sometimes a Tract / Block Group combination may be referred to as a single unit. For example, Block Group 2 in Tract 2857 may be referred to as unit 2857002.



PROJECT: SCA HARTLEY & HARTLEY LANDFILL SITE KAWKAWLIN TOWNSHIP, MICHIGAN		
SHEET TITLE: FIGURE 3-4 CENSUS TRACTS AND BLOCK GROUPS NEAR THE SCA HARTLEY & HARTLEY LANDFILL SITE		
DRAWN BY: C. HANKLEY	SCALE: AS NOTED	PROJ. NO. 6115.04
CHECKED BY: J. WEDEKIND	DATE PRINTED:	FILE NO. CENSUS_TR_BL.mxd
APPROVED BY:	DATE:	OCTOBER 2003
		744 Heartland Trail Madison, WI 53717 - 1934
		P.O. Box 8923 53708-8923 Phone 608-831-4444 Fax: 608-831-3334

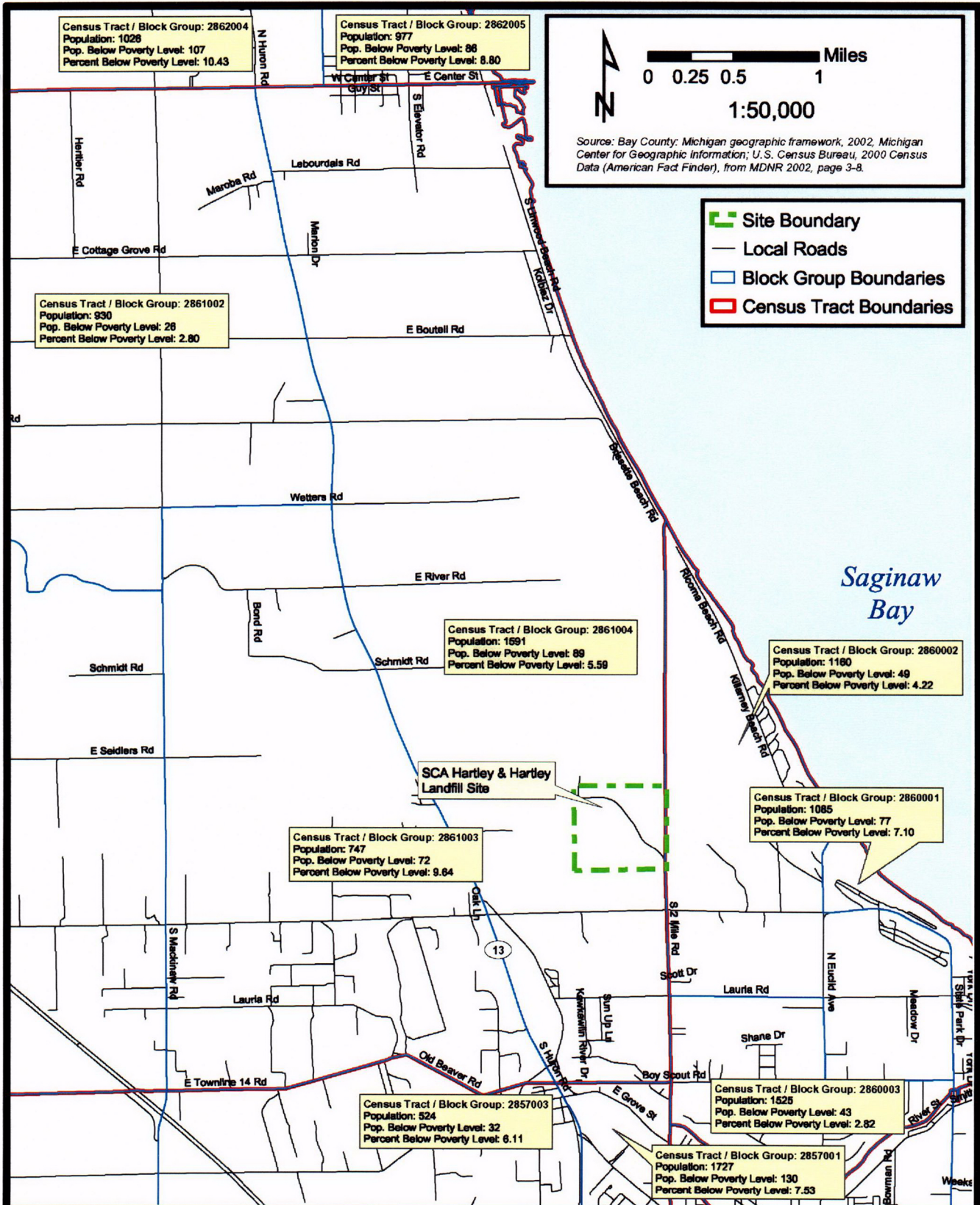


FIGURE 3-5 HOUSEHOLDS WITH MEDIAN INCOME BELOW THE POVERTY LEVEL BY BLOCK GROUP

**SCA HARTLEY & HARTLEY LANDFILL SITE
KAWKAWLIN TOWNSHIP, MICHIGAN**

DRAWN BY:	C. HANKLEY
APPROVED BY:	J. WEDEKIND
PROJECT NO.	6115.04
FILE NO.	POVERTYLEVEL.MXD
DATE:	OCTOBER 2003



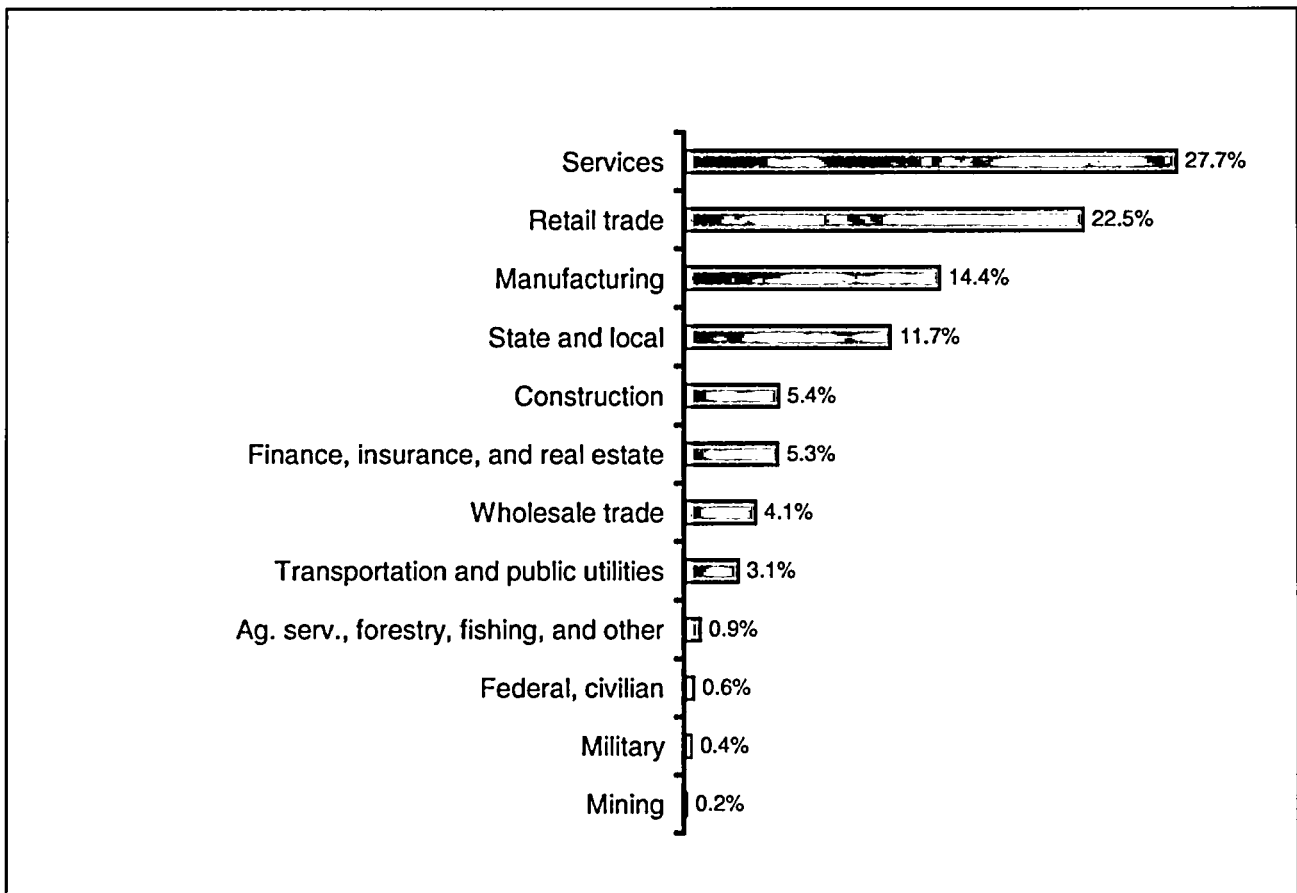


Figure 3-6
Employment by Industry in Bay County, Michigan, in 2000
SCA Hartley & Hartley Landfill Site
Kawkawlin Township, Michigan
 Source: U.S. Department of Commerce - Economics and Statistics Administration
 Bureau of Economic Analysis, Issued May 2002
 Taken from Michigan Economic Development Corporation
 (<http://medc.michigan.org>)

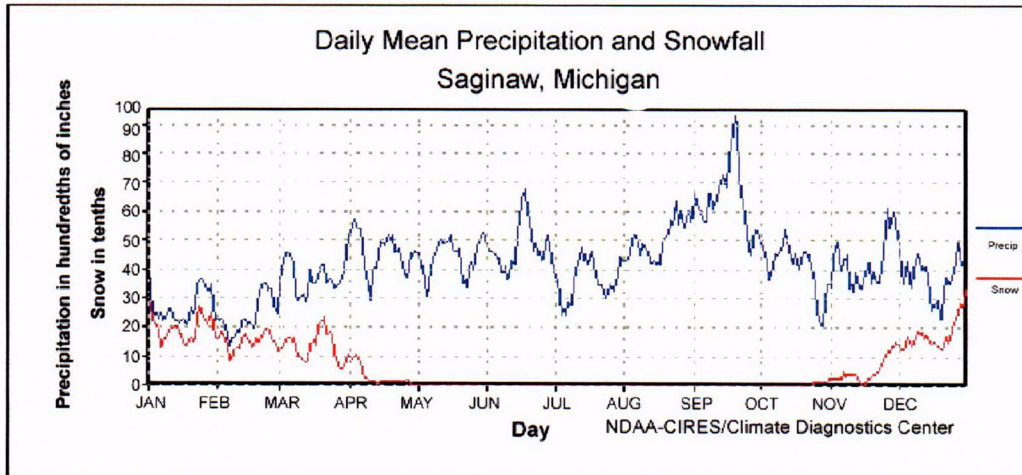


Figure 3-7
Mean Precipitation Amounts - Time Series
SCA Hartley & Hartley Landfill Site
Kawkawlin Township, Michigan
 Source: U.S. Department of Commerce - Economics and Statistics Administration
 Bureau of Economic Analysis, Issued May 2002
 Taken from Michigan Economic Development Corporation
<http://medc.michigan.org>

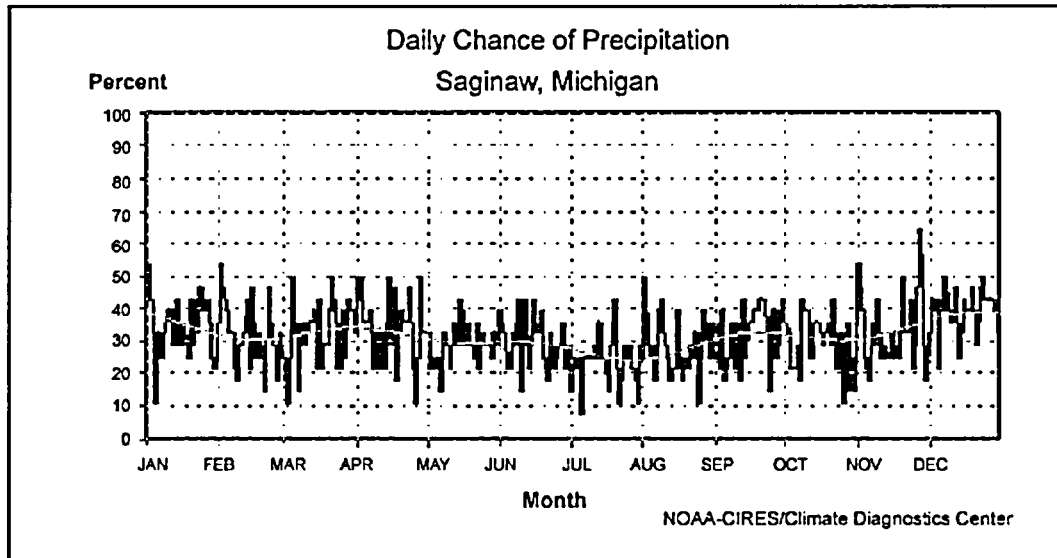


Figure 3-8
Mean Chance for Precipitation - Time Series
SCA Hartley & Hartley Landfill Site
Kawkawlin Township, Michigan
 Source: U.S. Department of Commerce - Economics and Statistics Administration
 Bureau of Economic Analysis, Issued May 2002
 Taken from Michigan Economic Development Corporation
 (<http://medc.michigan.org>)

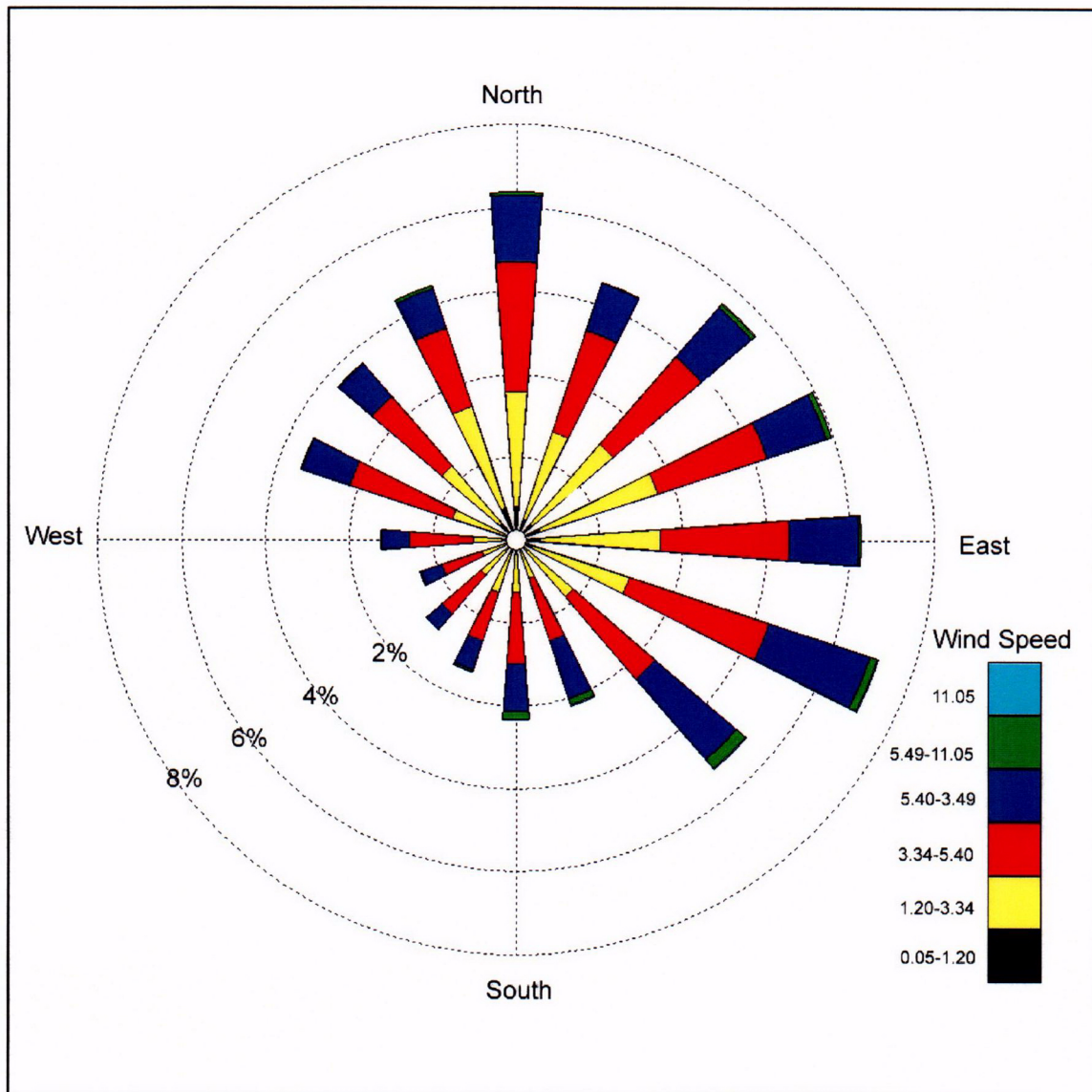


Figure 3-9
Wind Rose Diagram, 5-Year Average (1987-1991)
SCA Hartley & Hartley Landfill Site
Kawkawlin Township, Michigan
 Source: Lakes Environmental Software, 1998

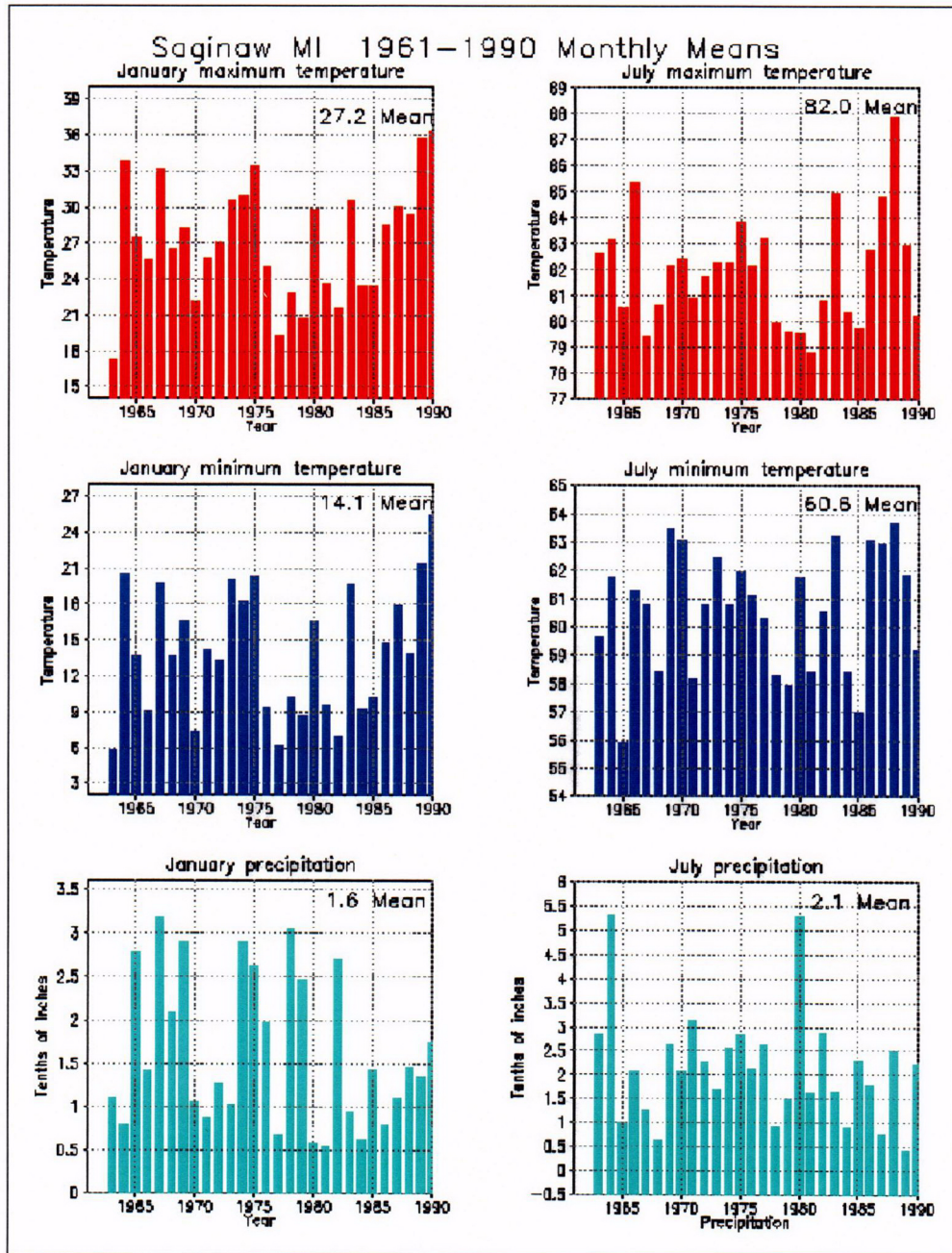


Figure 3-10
 30-Year Time Series Plots of Weather Extremes
 SCA Hartley & Hartley Landfill Site
 Kawkawlin Township, Michigan
 Source: U.S. Department of Commerce - Economics and Statistics Administration
 Bureau of Economic Analysis, Issued May 2002
 From the Michigan Economic Development Corporation
<http://medc.michigan.org>

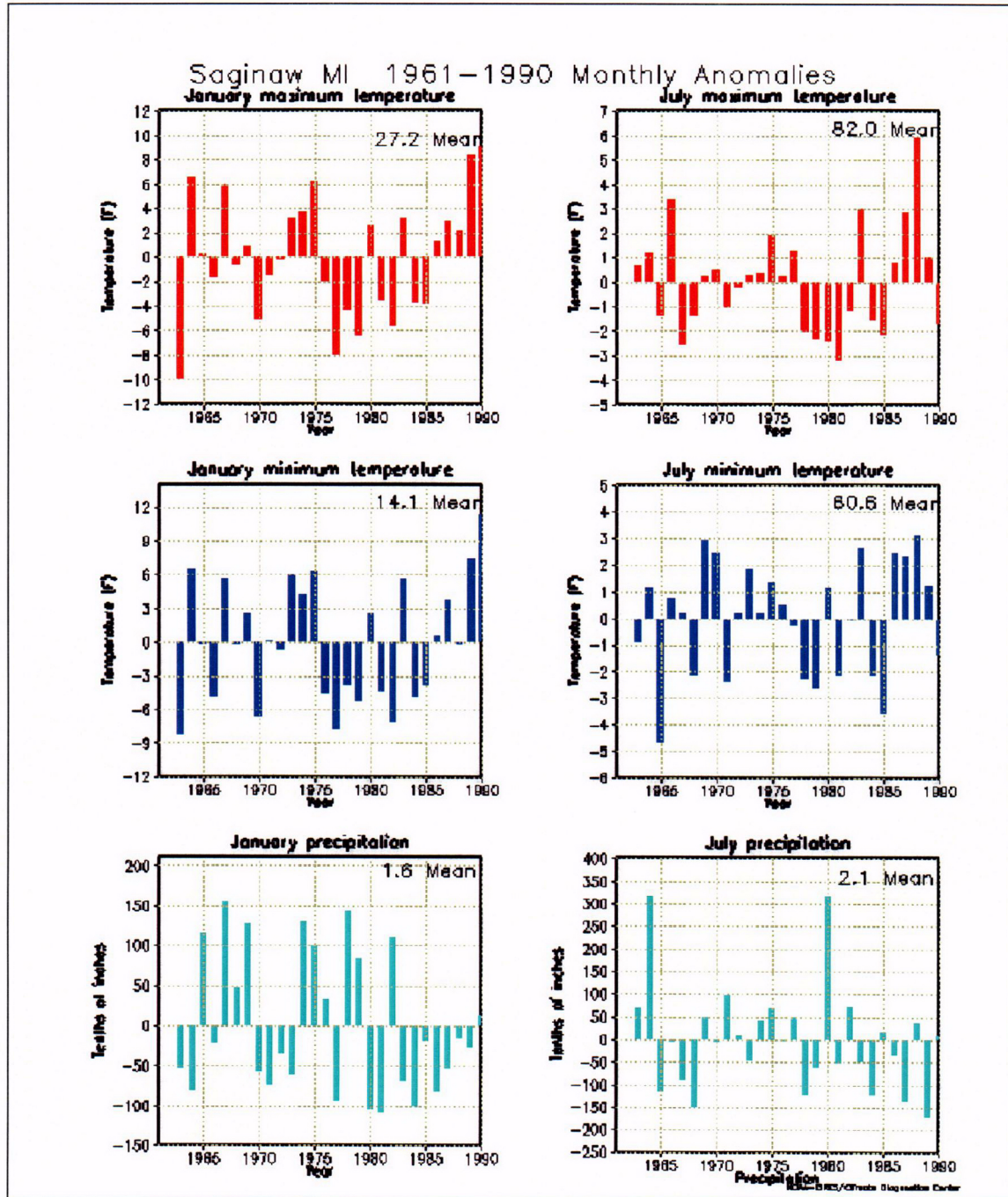


Figure 3-11
 30-Year Time Series Plots - Monthly Anomalies
 SCA Hartley & Hartley Landfill Site
 Kawkawlin Township, Michigan
 Source: U.S. Department of Commerce - Economics and Statistics Administration
 Bureau of Economic Analysis, Issued May 2002
 From the Michigan Economic Development Corporation
<http://medc.michigan.org>