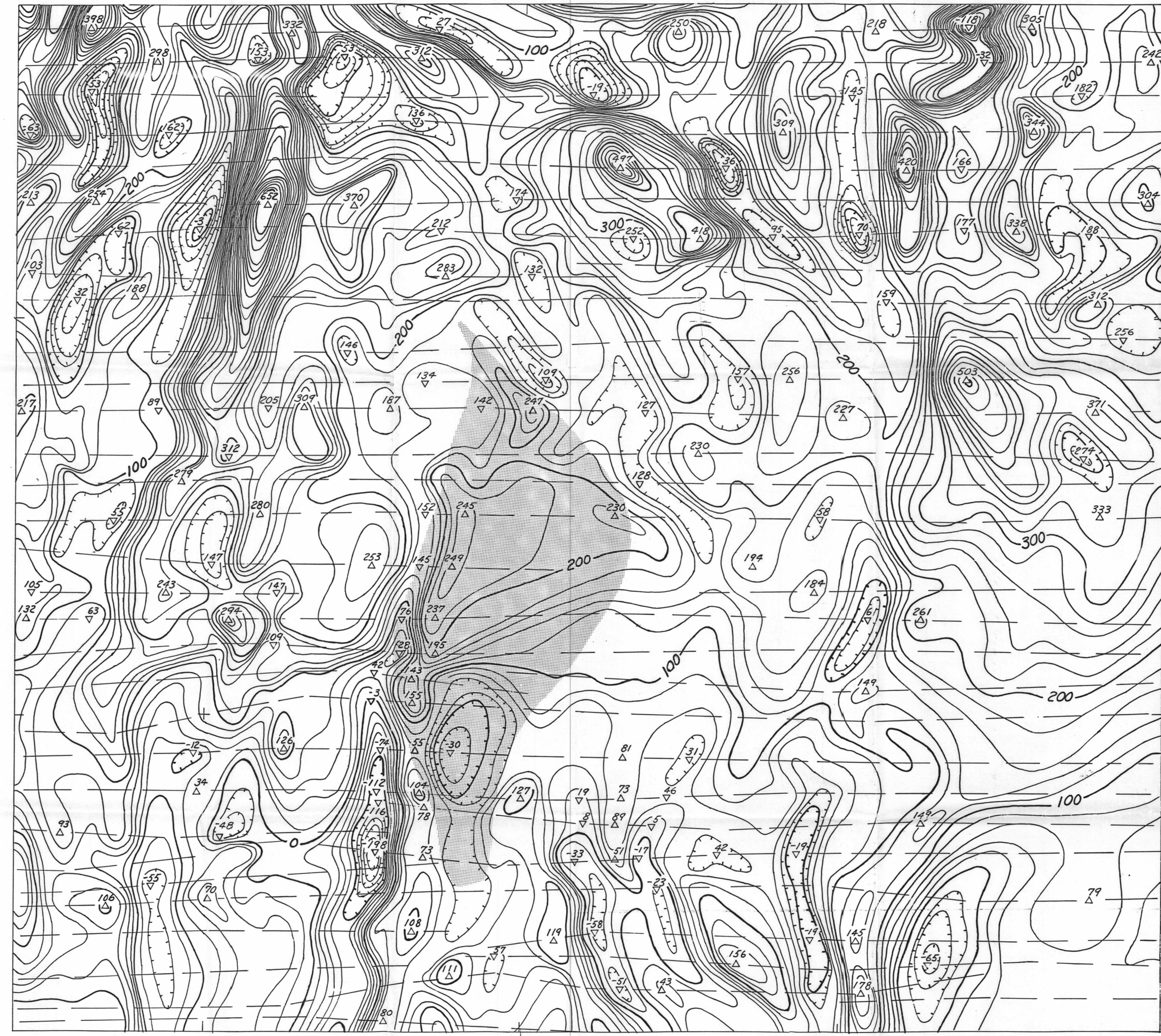
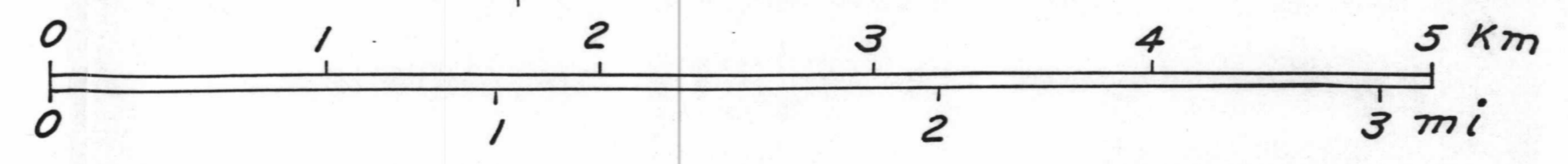


116° 31.5'

116° 22.5'
36° 54.5'



Contour interval = 20 nT
Measurements 120 m (400 ft) above surface



36° 48'

Figure 12.--Residual aeromagnetic map of Yucca Mountain area showing detail along east-west flight lines and the linear trends of the anomalies. Also shown are values of maxima and minima along some lines, and the site area (shaded). Hachures indicate closed areas of lower magnetic intensity.

D-02