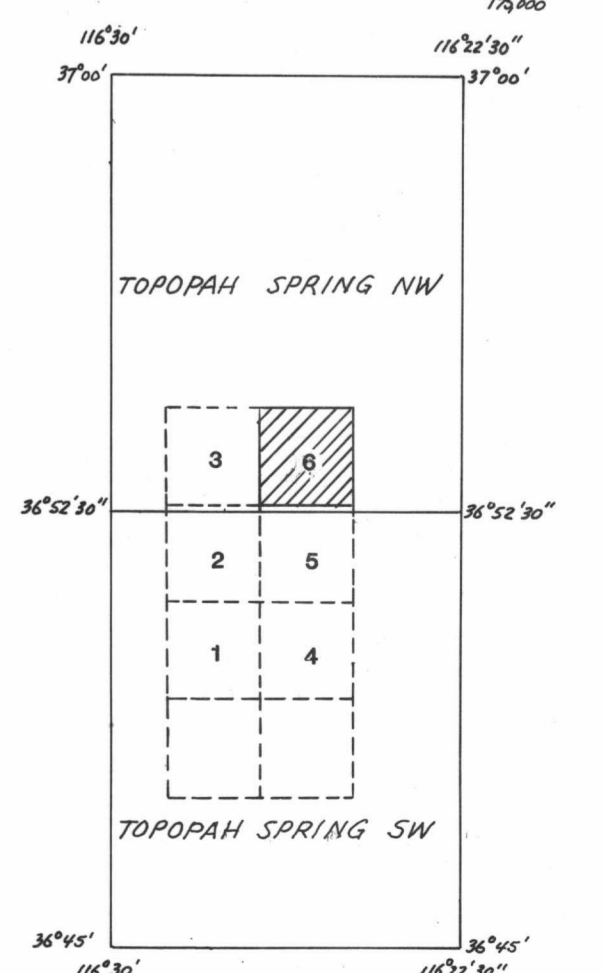


This map was compiled with analytical plotters by
the U.S. Geological Survey, Branch of Astrogeology, Flagstaff, Arizona.
The 1000 meter grid is in the Nevada State Plane Coordinate System,
1983

PART OF THE NEVADA TEST SITE
SCALE 1:5,000
CONTOUR INTERVAL 2 METERS
(WITH 1 METER SUPPLEMENTAL CONTOURS)



Topographic maps of Yucca Mountain area, Nye County, Nevada
compiled by
Sherman S.C.Wu



D-06