

POTENTIOMETRIC MAP OF THE CANDIDATE AREA AND GEOLOGIC SECTION, NEVADA-CALIFORNIA

EXPLANATION

MAP

- POTENTIOMETRIC CONTOUR (ALTITUDE IN METERS; INTERVAL 100 METERS) CLOSED BASINS ARE HACHURED
- GROUND-WATER SUBBASIN (ARROWS INDICATE AREAS OF PROBABLE FLOW FROM OUTSIDE OF SUBBASIN)
- SPRING
- WELL COMPLETED IN VALLEY FILL
- WELL COMPLETED IN ROCKS OF TERTIARY AGE, PRINCIPALLY VOLCANIC ROCKS
- WELL COMPLETED IN VALLEY FILL AND ROCKS OF TERTIARY AGE
- WELL COMPLETED IN ROCKS OF TERTIARY AND PALEOZOIC OR PRECAMBRIAN AGES
- WELL COMPLETED IN ROCKS OF PALEOZOIC OR PRECAMBRIAN AGE
- 734.9 POTENTIOMETRIC LEVEL (METERS ABOVE SEA LEVEL) (-P PERCHED; -R REPORTED, UNCERTAIN; D KNOWN DOWNWARD GRADIENT; U KNOWN UPWARD GRADIENT)
- LINE OF GEOLOGIC SECTION

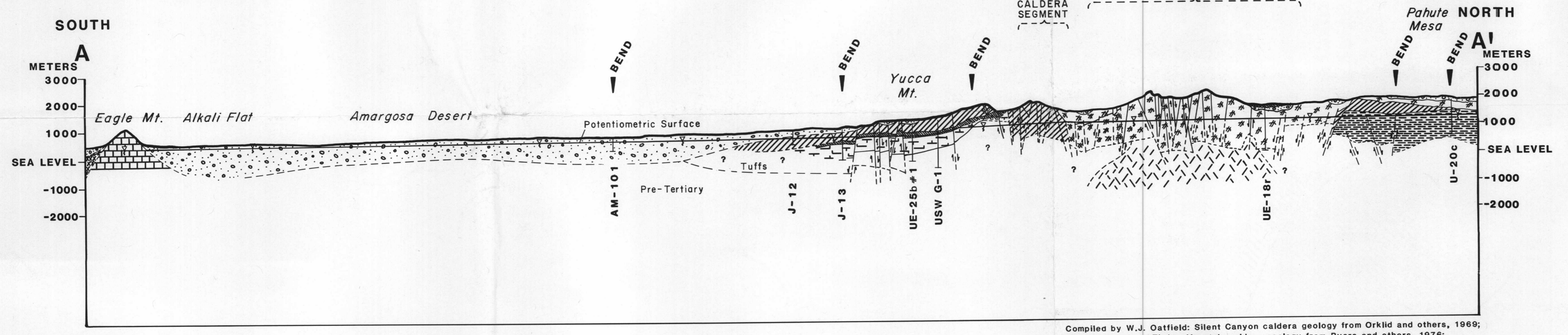
GEOLOGIC SECTION

- QUATERNARY GRAVELS AND TUFFACEOUS SEDIMENTS
- TIMBER MOUNTAIN TUFF
- PAINTBRUSH TUFF
- RHYOLITIC LAVAS OF CALICO HILLS
- CRATER FLAT TUFF
- BELTED RANGE TUFF
- MICROGRANITE PORPHYRY
- CAMBRIAN LIMESTONES AND DOLOMITES
- CAMBRIAN MARINE AND NONMARINE CLASTIC ROCKS
- POTENTIOMETRIC SURFACE
- CONTACT—Dashed where approximately located
- FAULT—Dashed where approximately located arrows indicate direction of movement
- DRILL HOLE AND NUMBER

Base from U.S. Geological Survey
Caliente, Death Valley, Goldfield, Las Vegas, 1:250,000, 1954.

CONTOUR INTERVAL 500 FEET
NATIONAL GEODETIC VERTICAL DATUM OF 1929

SCALE 1:500,000
20 MILES
20 KILOMETERS



APPROXIMATE MEAN DECLINATION
TRUE NORTH
MAGNETIC NORTH

0 5 10 MILES
0 5 10 KILOMETERS

VERTICAL EXAGGERATION x 2.6

Compiled by W.J. Ostfield: Silent Canyon caldera geology from Orkild and others, 1969; Claim Canyon and Timber Mountain caldera geology from Byers and others, 1976; Yucca Mountain geology from Carr and others, 1984.

D-03