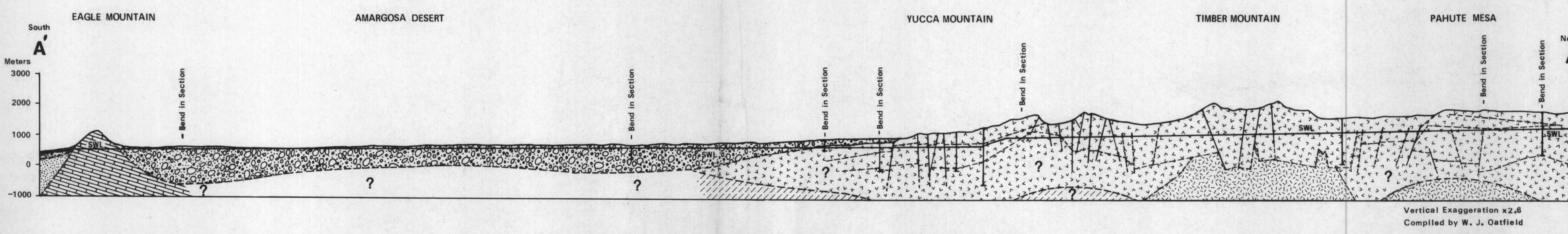
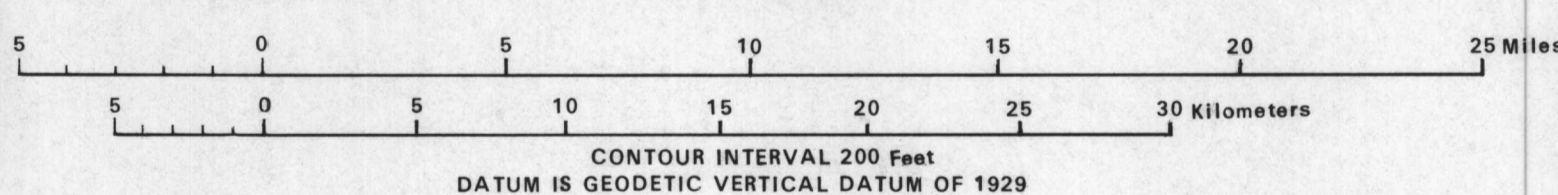


Base from U. S. Geological Survey  
California, Death Valley, Goldfield,  
and Las Vegas, 1954  
Scale 1:250,000

SCALE 1:250,000



MAP SHOWING DISTRIBUTION OF HYDRAULIC HEADS, MODEL  
RESIDUALS, ZONES, AND SITES OF UNIT-FLUX CALCULATIONS,  
NEVADA TEST SITE AND VICINITY, NEVADA-CALIFORNIA

EXPLANATION

- |  |   |  |   |
|--|---|--|---|
|  | RECHARGE AREA                                 |  | Zone and number - properties of zones 10, 11, 14, and 23 were held constant; properties of other zones were allowed to vary |
|  | DISCHARGE AREA                                |  | General area of ground-water discharge  |
|  | AQUITARDS AND BARRIERS (wavy line shaded)     |  | Outcrop   |
|  | Upper Cretaceous Aquitard                     |  | Measured head in meters (Well name)   |
|  | Lower Cretaceous Aquitard                     |  | Piezometer head in meters (if no residual given, datum was not used in model)   |
|  | Intrusive Rocks                               |  | Area for which unit flux and flux sensitivities were calculated   |
|  | Other Hydraulic Barriers                      |  | Discharge node  |
|  | TRANSMISSIVE ROCKS (only part of zone shaded) |  | Boundary flux; zero elsewhere   |
|  | Alluvium                                      |  | Boundary of ground-water basin  |
|  | Volcanic Rocks                                |  |   |
|  | Carbonate Rocks                               |  |   |

ABBREVIATIONS

- at Akali Flat  
dv Death Valley  
pv Pahranagat Valley  
rs Resting Springs  
SL Static Water Level