

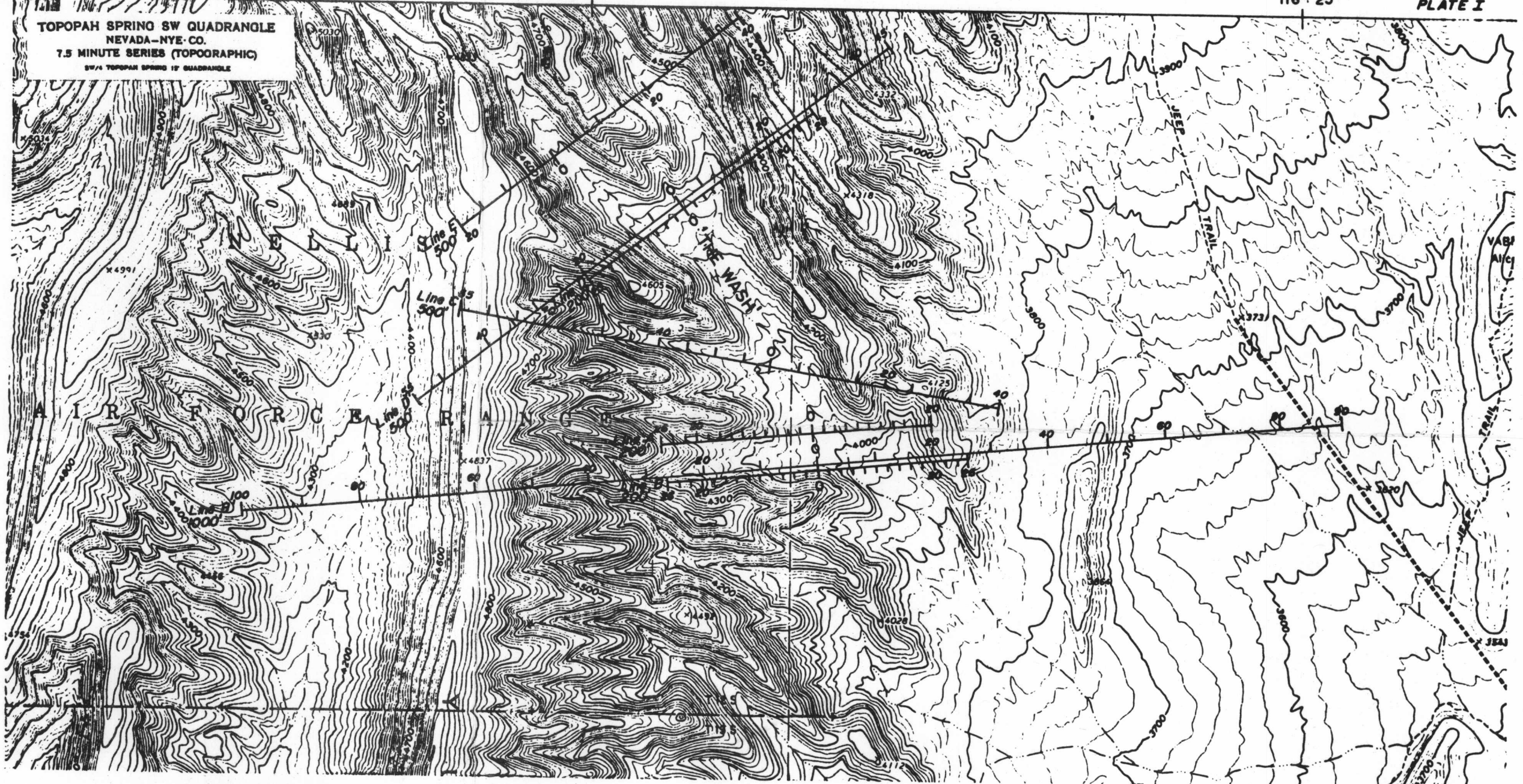
52°30'
36"

116° 27' 30"

116° 25'

PLATE I

TOPOPAH SPRING SW QUADRANGLE
NEVADA-NYE CO.
7.5 MINUTE SERIES (TOPOGRAPHIC)
SW 1/4 TOPOPAH SPRING 17 QUADRANGLE



EXPLANATION



LINES A, B, & D - 200 FOOT DIPOLES
LINES C, D', & E - 500 FOOT DIPOLES
LINE B' - 1000 FOOT DIPOLES

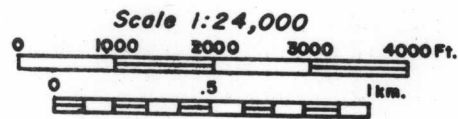


PLATE I
LINE LOCATION MAP
YUCCA MOUNTAIN AREA,
NEVADA TEST SITE

D-08