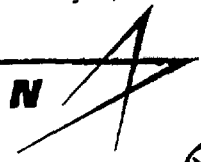


Lockheed Martin Commercial Space Systems Newtown
License Renewal/Amendment
NRC # 37-02006-09
July 7, 2003

LOCKHEED MARTIN



Q-2

July 7, 2003

Ms. Elizabeth Ullrich
Nuclear Materials Safety Branch
US Nuclear Regulatory Commission: Region 1
476 Allendale Road
King of Prussia, PA 19406-1415

Subject: License Renewal
Amendment Application
Reference: License No. 37-02006-09
Control # ~~133106~~

030-12894

133877 *nmf*

Dear Ms. Ullrich,

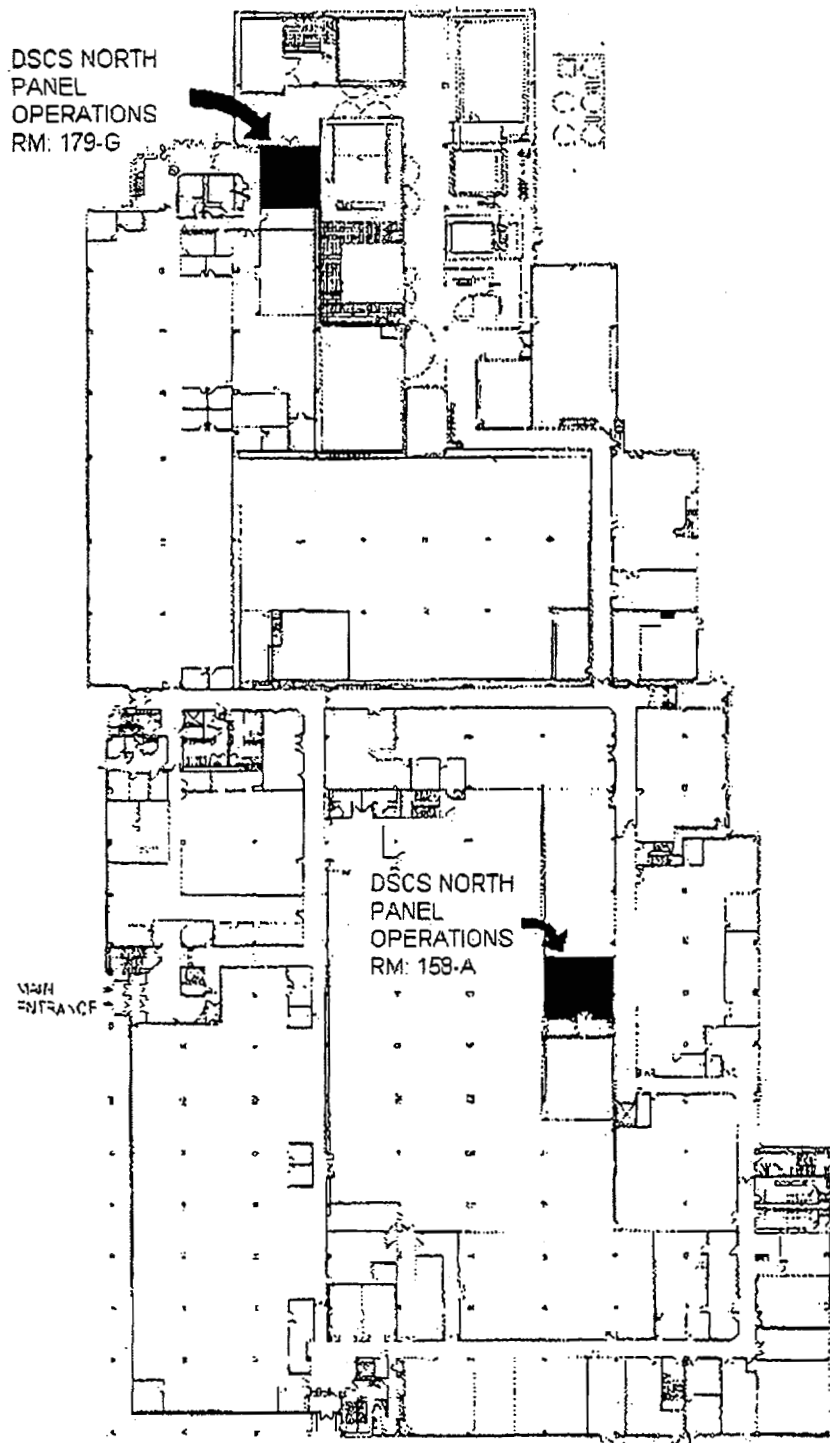
The following additional information requested concerning the handling of Magnesium Thorium (MgTh) containing panels at Lockheed Martin Commercial Space Systems Newtown is provided below.

Lockheed Martin Commercial Space Systems Company is located at 100 Campus Drive Newtown, Pa 18940. The facility consists of two buildings, Product Support Building 350 and Product Team Building 351. MgTh panels were handled only in the Product Team Building 351 in rooms 158A and 179G. These buildings are located in a commercial area with residential areas located nearby. Attached is a diagram of the Newtown Site.

The handling of magnesium/thorium panels took place at LMCSS Newtown from 1998 to 1999 on NRC License # SUB-831, and from 1999 to 2003 on NRC License # 37-02006-09. These panels underwent very limited assembly work. All operations that had the potential to cause an airborne release of magnesium-thorium containing material were evaluated by Environmental Safety & Health. The last time the panels were processed in a manner where the potential for generation of airborne particles existed was on January 18, 1999. Four (4) MgTh containing boxes were drilled/countersunk. Results of the survey determined that some minimal contamination of air and surfaces occurred during this drilling process. Thoriated Magnesium Handling Procedures are attached.

LMCSS Newtown also uses Cesium 137 sealed sources (12) for test calibration of instruments/sensors (multi-paction). Each source has an activity of 10 microcuries or less and stored in a secured lead lined metal container in PIM

133877



Magnesium Thorium Handling Areas shaded in **BLACK**

Room 196 in the PTB. These sources are classified as Exempt Radioactive Materials.

Thoriated Magnesium

Limited use of Thoriated Magnesium will be required within Lockheed Martin Commercial Space Systems (LMCSS) – Newtown to facilitate completion of satellite activities. The MgTh is used in the construction of satellite equipment panels to support the attachment of electronic boxes, harnesses, etc. Each panel has an approximate activity level of 50 microcuries.

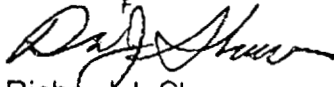
The MgTh panels undergo limited assembly work and testing. Assembly tasks are conducted in Room 158A of the PTB and testing is conducted in Room 179G of the PTB. Personnel that are involved with hands on assembly activities that may require minor machine work with hand tools are required to notify the RSO prior to the start of any machining/assembly operations. The RSO will determine personal protective equipment requirements.

Industrial hygiene air monitoring is conducted during operations that have the potential to generate surface or air contamination to obtain representative personal exposure data.

All MgTh assembly processes are performed with at least two employees. One employee is required to operate a HEPA equipped vacuum aspirator to capture any fugitive particles that may result from the assembly process.

All particles generated during the MgTh equipment panel assembly/machining operations are captured and stored for subsequent disposal.

Sincerely,



Richard J. Shaw
Sr. Occupational Health & Safety Engineer