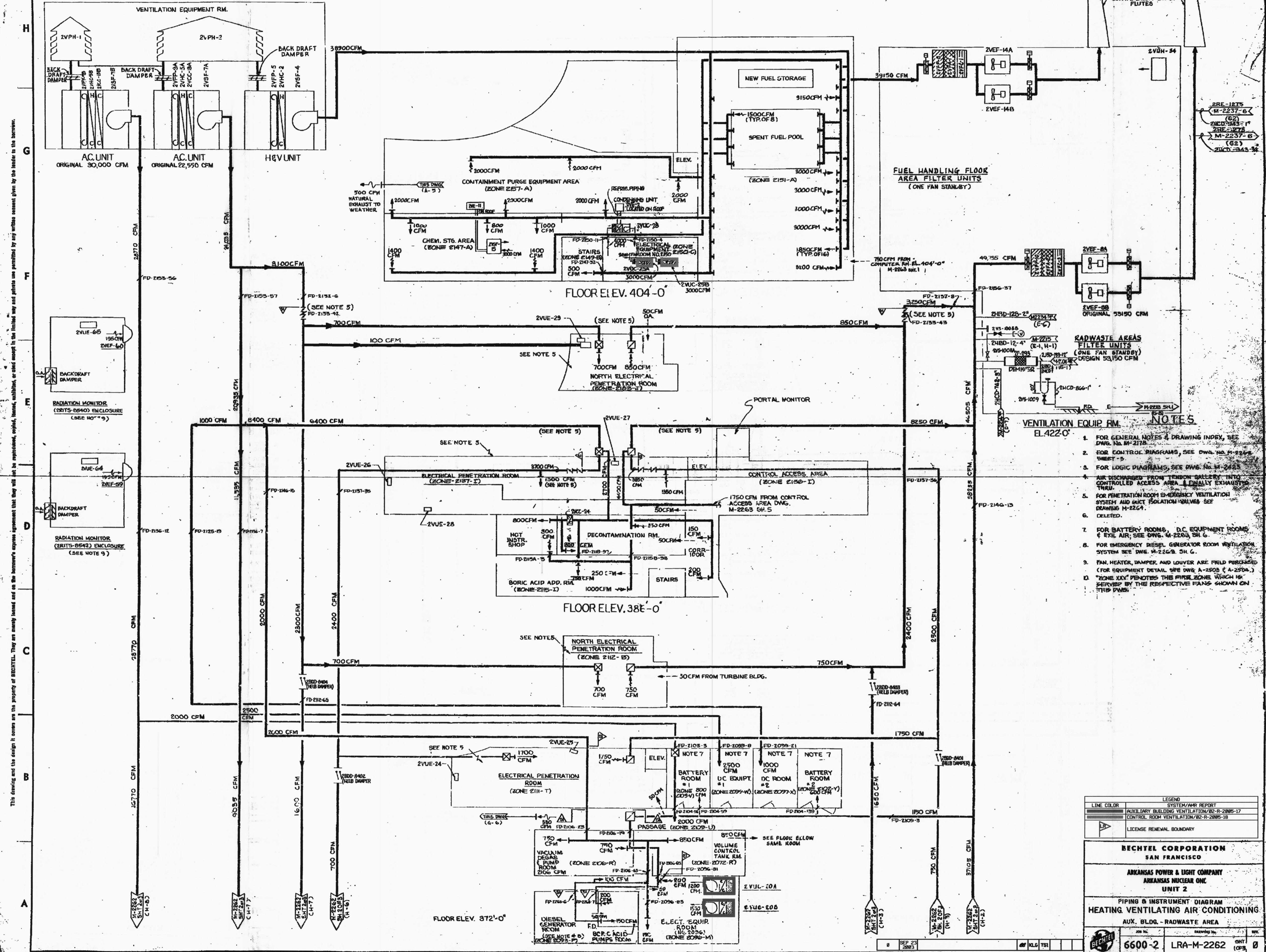


M-2262

SIZE E



This drawing and the design it covers are the property of BECHTEL. They are hereby loaned and on the borrower's express agreement that they will not be reproduced, copied, loaned, modified, or used except in the limited way and places as permitted by any written consent given by the lender to the borrower.

- NOTES**
1. FOR GENERAL NOTES & DRAWING INDEX, SEE DWG. NO. M-2178.
 2. FOR CONTROL DIAGRAMS, SEE DWG. NO. M-2264 SHEET 5.
 3. FOR LOGIC DIAGRAMS, SEE DWG. NO. M-2425.
 4. AIR DISCHARGED FROM TENDON GALLERY INTO CONTROLLED ACCESS AREA & FINALLY EXHAUSTED THROUGH TOWER.
 5. FOR PENETRATION ROOM EMERGENCY VENTILATION SYSTEM AND ISOLATION VALVES SEE DRAWING M-2264.
 6. DELETED.
 7. FOR BATTERY ROOMS, D.C. EQUIPMENT ROOMS & EXHA. AIR, SEE DWG. M-2263 SH. 6.
 8. FOR EMERGENCY DIESEL GENERATOR ROOM VENTILATION SYSTEM SEE DWG. M-2262 SH. 6.
 9. FAN, HEATER, DAMPER AND LOUVER ARE FIELD PURCHASED (FOR EQUIPMENT DETAIL SEE DWG. A-2503 (A-2504)).
 10. "ZONE XXX" DENOTES THE FIRE ZONE WHICH IS SERVED BY THE RESPECTIVE FANS SHOWN ON THIS DWG.

LEGEND	
—	SYSTEM/ANN REPORT
—	AUXILIARY BUILDING VENTILATION/82-R-2085-17
—	CONTROL ROOM VENTILATION/82-R-2085-18
—	LICENSE RENEWAL BOUNDARY

BECHTEL CORPORATION
SAN FRANCISCO

ARKANSAS POWER & LIGHT COMPANY
ARKANSAS NUCLEAR ONE
UNIT 2

PIPING & INSTRUMENT DIAGRAM
HEATING VENTILATING AIR CONDITIONING
AUX. BLDG. - RADWASTE AREA

SEP 23 1983

6600-2 LRA-M-2262

2 BASED ON M-2262 SH 1 REV 33

D-60