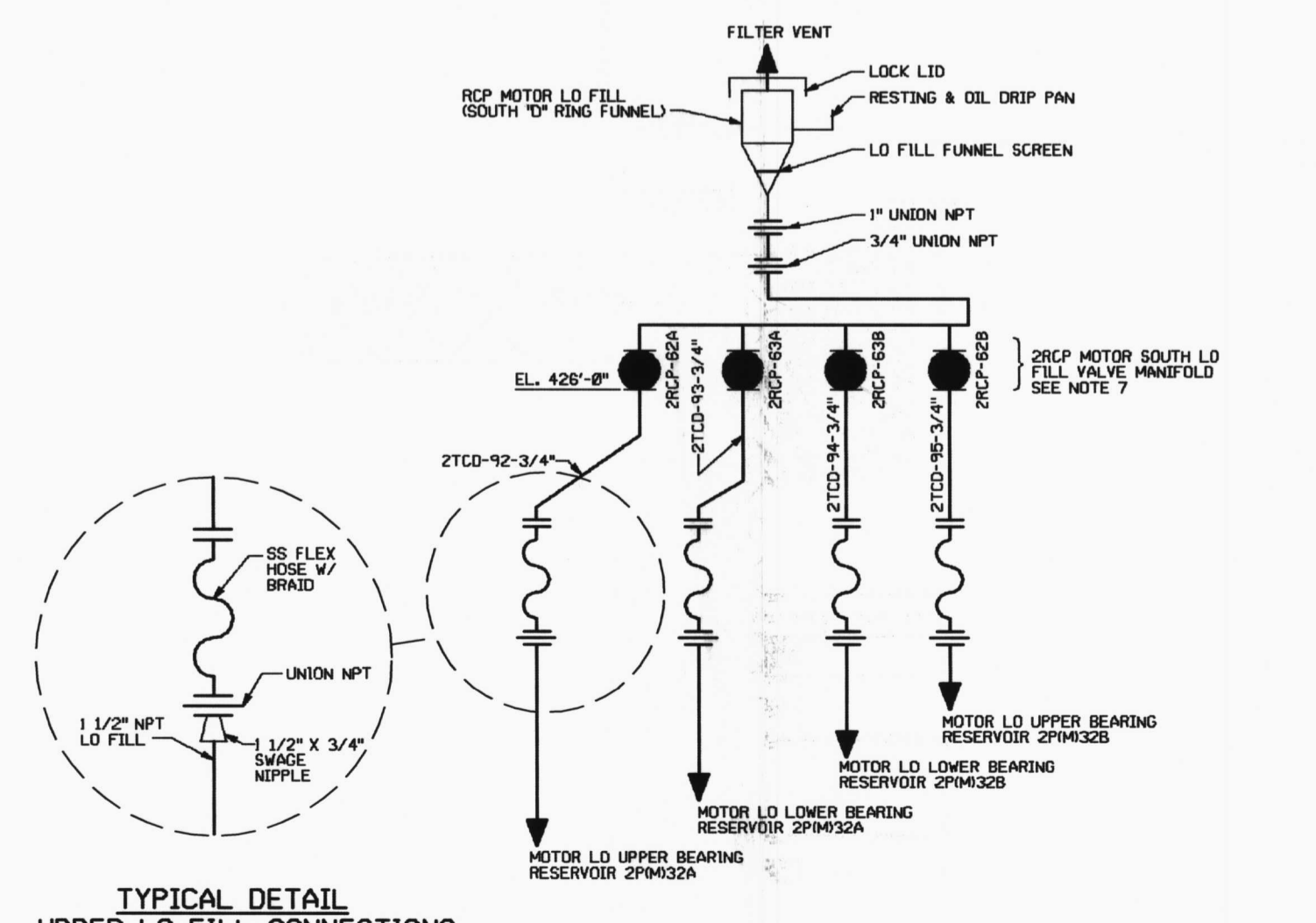
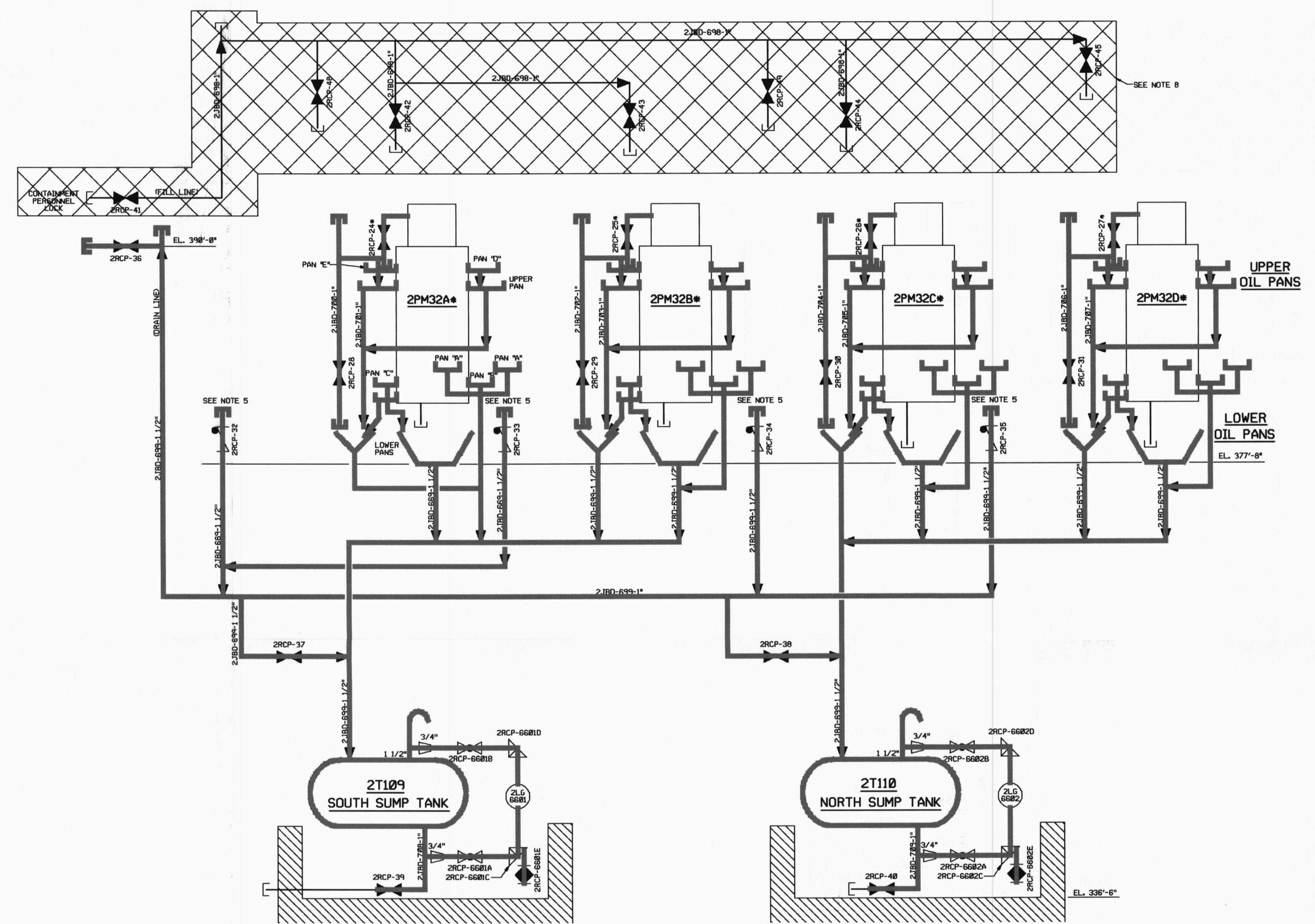
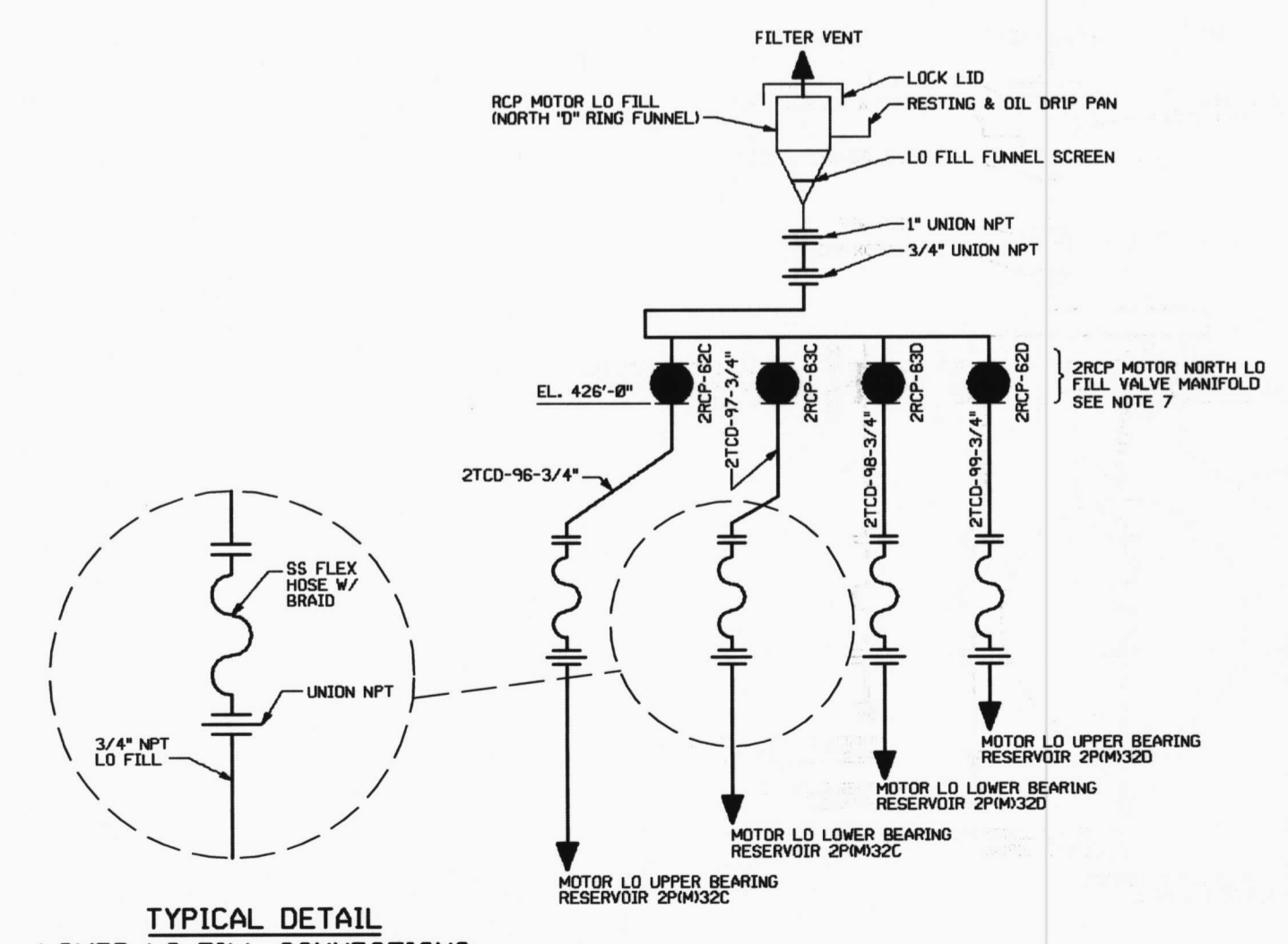


8 7 6 5 4 3 2 1

H G F E D C B A



TYPICAL DETAIL
UPPER LO FILL CONNECTIONS



TYPICAL DETAIL
LOWER LO FILL CONNECTIONS

- NOTES:
1. REFERENCE P & ID M-2238 FOR RC PUMP LUBE OIL SYSTEM.
 2. REFERENCE DWG. 6608-M2001-C9-1 FOR MOTOR OUTLINE.
 3. REFERENCE SK-M-2412 FOR UPPER & LOWER OIL PAN DETAILS.
 4. REFERENCE FSX-M-2194 FOR SUMP TANK DETAILS.
 5. UPPER & LOWER OIL RESERVOIRS WILL NORMALLY BE PUMPED OUT OF CONTAINMENT USING A PORTABLE PUMP CONNECTED AT THESE POINTS.
 6. PANS IDENTIFIED AS A, B, C, D AND E ON 2PM32A ARE TYPICAL FOR ALL 4 PUMPS.
 7. LO FILL VALVE HANDLES CAN BE LOCKED.
 8. ABANDONED IN PLACE.

LEGEND	
---	SYSTEM/ANR REPORT
---	HAZOP FIRE PROTECTION AND REACTOR COOLANT PUMP MOTOR OIL LEAKAGE COLLECTION/RC-R-2805-12
---	LICENSE RENEWAL BOUNDARY

ARKANSAS NUCLEAR ONE		
UNIT 2		
RUSSELLVILLE, ARKANSAS		
PIPING & INSTRUMENT DIAGRAM		
REACTOR COOLANT PUMP		
OIL COLLECTION SYSTEM		
DRAWING NO	SHEET	REVISION
LRA-M-2233	1	0

D-41