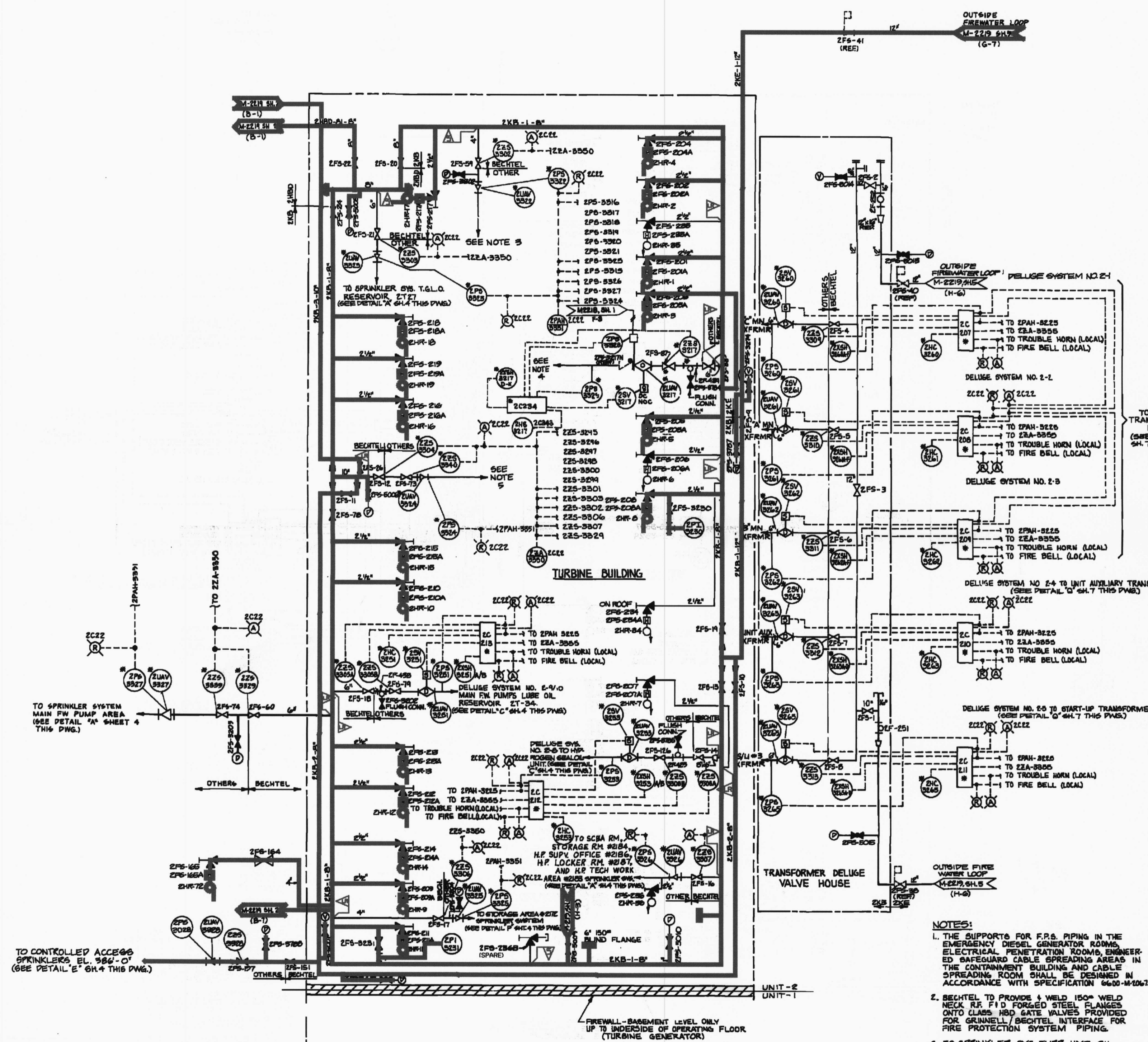


HOSE RACK LOCATION UNIT TWO		UNIT TWO			
MANUAL ISOLATION VALVE	HYDRANT VALVE	HR. NO.	LOCATION	FLR. ELEV.	BUILDING
2FS-201	2FS-201A	REEL 2HR-1	4E-10	888'-0"	TURBINE
2FS-202	2FS-202A	REEL 2HR-2	4E-10	884'-0"	TURBINE
2FS-203	2FS-203A	REEL 2HR-3	8E-10	866'-6"	TURBINE
2FS-204	2FS-204A	REEL 2HR-4	1E-10	866'-0"	TURBINE
2FS-205	2FS-205A	REEL 2HR-5	1E-10	866'-0"	TURBINE
2FS-206	2FS-206A	REEL 2HR-6	1E-10	884'-0"	TURBINE
2FS-207	2FS-207A	REEL 2HR-7	8E-10	884'-0"	TURBINE
2FS-208	2FS-208A	REEL 2HR-8	1E-10	866'-6"	TURBINE
2FS-209	2FS-209A	REEL 2HR-9	1E-6	869'-0"	TURBINE
2FS-210	2FS-210A	REEL 2HR-10	8E-6	866'-0"	TURBINE
2FS-211	2FS-211A	REEL 2HR-11	8E-6.5	884'-0"	TURBINE
2FS-212	2FS-212A	REEL 2HR-12	8E-6	866'-0"	TURBINE
2FS-213	2FS-213A	REEL 2HR-13	8E-6	866'-0"	TURBINE
2FS-214	2FS-214A	REEL 2HR-14	1E-6	866'-0"	TURBINE
2FS-215	2FS-215A	REEL 2HR-15	1E-6	866'-0"	TURBINE
2FS-216	2FS-216A	REEL 2HR-16	1E-6	866'-0"	TURBINE
2FS-217	2FS-217A	REEL 2HR-17	1E-6	884'-0"	TURBINE
2FS-218	2FS-218A	REEL 2HR-18	1E-6	866'-0"	TURBINE
2FS-219	2FS-219A	REEL 2HR-19	1E-6	866'-0"	TURBINE
2FS-220	2FS-220A	REEL 2HR-20	1E-10.5	866'-0"	AUXILIARY
2FS-221	2FS-221A	REEL 2HR-21	1E-12.31	866'-0"	AUXILIARY
2FS-222	2FS-222A	REEL 2HR-22	8E-5	404'-0"	AUXILIARY
2FS-223	2FS-223A	REEL 2HR-23	8E-5	884'-0"	AUXILIARY
2FS-224	2FS-224A	REEL 2HR-24	1E-4.5	885'-0"	AUXILIARY
2FS-225	2FS-225A	REEL 2HR-25	8E-5	866'-0"	AUXILIARY
2FS-226	2FS-226A	REEL 2HR-26	8E-5	886'-0"	AUXILIARY
2FS-227	2FS-227A	REEL 2HR-27	1E-5	864'-0"	AUXILIARY
2FS-228	2FS-228A	REEL 2HR-28	8E-5	872'-0"	AUXILIARY
2FS-229	2FS-229A	REEL 2HR-29	8E-8.5	872'-0"	AUXILIARY
2FS-230	2FS-230A	REEL 2HR-30	8E-3	866'-0"	AUXILIARY
2FS-231	2FS-231A	REEL 2HR-31	1E-5	404'-0"	AUXILIARY
2FS-232	2FS-232A	REEL 2HR-32	8E-5	404'-0"	AUXILIARY
2FS-233	2FS-233A	REEL 2HR-33	1E-1	884'-0"	AUXILIARY
2FS-234	2FS-234A	REEL 2HR-34	1E-8	449'-0"	TURBINE ROOF
2FS-235	2FS-235A	REEL 2HR-35	1E-8	449'-0"	TURBINE ROOF
2FS-236	N/A	REEL 2HR-36	1E-9	884'-0"	TURBINE
2FS-237	2FS-237A	REEL 2HR-37	1E-3.1	866'-0"	AUX. BLDG. EXTENSION
2FS-238	2FS-238A	REEL 2HR-38	1E-3.1	869'-0"	AUX. BLDG. EXTENSION
2FS-239	2FS-239A	REEL 2HR-39	1E-5.9	872'-0"	AUXILIARY
2FS-240	2FS-240A	REEL 2HR-40	1E-12.4.5	885'-0"	AUXILIARY
2FS-125	2FS-125A	REEL 2HR-41	1E-4.5	817'-0"	AUXILIARY
2FS-124	N/A	RACK 2HR-42	1E-12.2	817'-0"	AUXILIARY
2FS-109	2FS-109A	REEL 2HR-43	N	422'-0"	RK
2FS-110	2FS-110A	REEL 2HR-44	S	422'-0"	RK
2FS-111	2FS-111A	REEL 2HR-45	N	405'-0"	RK
2FS-112	2FS-112A	REEL 2HR-46	S	405'-0"	RK
2FS-113	2FS-113A	REEL 2HR-47	N	866'-0"	RK
2FS-114	2FS-114A	REEL 2HR-48	S	866'-0"	RK
2FS-115	2FS-115A	REEL 2HR-49	N	876'-0"	RK
2FS-116	2FS-116A	REEL 2HR-50	S	876'-0"	RK
2FS-117	2FS-117A	REEL 2HR-51	N	887'-0"	RK
2FS-118	2FS-118A	REEL 2HR-52	S	887'-0"	RK
2FS-119	2FS-119A	REEL 2HR-53	N	886'-0"	RK
2FS-120	2FS-120A	REEL 2HR-54	S	886'-0"	RK
2FS-121	2FS-121A	REEL 2HR-55	W	886'-0"	RK
2FS-165	2FS-165A	REEL 2HR-56	1E-6	409'-0"	TURBINE
2FS-178	N/A	RACK 2HR-57	N	866'-6"	MAINTENANCE OFFICE BLDG.
2FS-184	N/A	RACK 2HR-58	N	872'-0"	2ND FLOOR MAINT. BLDG.
2FS-185	N/A	RACK 2HR-59	N	872'-0"	2ND FLOOR MAINT. BLDG.
2FS-187	N/A	RACK 2HR-60	N	866'-0"	2ND FLOOR MAINT. BLDG.
2FS-188	N/A	RACK 2HR-61	N	866'-0"	2ND FLOOR MAINT. BLDG.
2FS-189	N/A	RACK 2HR-62	N	866'-0"	2ND FLOOR MAINT. BLDG.
2FS-191	N/A	RACK 2HR-63	N	404'-0"	4TH FLOOR MAINT. BLDG.
2FS-190	N/A	RACK 2HR-64	N	404'-0"	4TH FLOOR MAINT. BLDG.
2FS-181	N/A	RACK 2HR-65	N	884'-0"	2ND FLOOR TOOL ROOM
2FS-182	N/A	RACK 2HR-66	N	884'-0"	1ST FLOOR MAINT. BLDG.
2FS-183	N/A	RACK 2HR-67	N	884'-0"	1ST FLOOR MAINT. BLDG.
2FS-186	N/A	RACK 2HR-68	N	886'-0"	2ND FLOOR MAINT. BLDG.
2FS-192	N/A	RACK 2HR-69	N/E	884'-0"	NEW WAREHOUSE BLDG.
2FS-196	N/A	RACK 2HR-70	N	884'-0"	CARPENTER SHOP
2FS-199	N/A	RACK 2HR-71	1E-4	869'-6"	AUX. BLDG. EXTENSION
2FS-175	N/A	RACK 2HR-72	1E-3.1	884'-0"	AUX. BLDG. EXTENSION
2FS-176	N/A	RACK 2HR-73	1E-3.1	885'-0"	AUX. BLDG. EXTENSION
2FS-276	N/A	RACK 2HR-74	N	884'-0"	NEW WAREHOUSE BLDG.
2FS-811	N/A	RACK 2HR-75	N	884'-0"	ROOF MAINT. BLDG.
2FS-278	N/A	RACK 2HR-76	N	884'-0"	RIB SHOP



- NOTES:**
1. THE SUPPORTS FOR F.P.S. PIPING IN THE EMERGENCY DIESEL GENERATOR ROOMS, ELECTRICAL PENETRATION ROOMS, ENGINEERED SAFEGUARD CABLE SPREADING AREAS IN THE CONTAINMENT BUILDING AND CABLE SPREADING ROOMS SHALL BE DESIGNED IN ACCORDANCE WITH SPECIFICATION 64-10-W-026.7.
 2. BECHTEL TO PROVIDE 1/2" WELD NECK R.F. FID FORGED STEEL FLANGES ONTO CLASS HB GATE VALVES PROVIDED FOR GRUNNELL / BECHTEL INTERFACE FOR FIRE PROTECTION SYSTEM PIPING.
 3. BECHTEL TO PROVIDE 1/2" WELD NECK R.F. FID FORGED STEEL FLANGES ONTO CLASS HB GATE VALVES PROVIDED FOR GRUNNELL / BECHTEL INTERFACE FOR FIRE PROTECTION SYSTEM PIPING.
 4. PRE-ACTION SPRINKLER SYS. TO TURBINE GEN. BREAKING & LUBE OIL PIPE (SEE DETAIL 'J' SH. 4 THIS DWG.).
 5. TO SPRINKLER SYSTEM UNDER OPERATING FL. (SEE DETAIL 'A' SH. 4 THIS DWG.).
 6. 2HR-78 IS SUPPLIED FROM DOMESTIC WATER.

LEGEND	
LINE COLOR	SYSTEM/AMR REPORT
WATER SUPPRESSION FIRE PROTECTION/82-R-2005-08	
ARKANSAS NUCLEAR ONE	
RUSSELLVILLE, ARKANSAS	
PIPING AND INSTRUMENT DIAGRAM	
FIRE WATER	
DRAWING NO.	SHEET
LRA-M-2219	1
REVISION	0

D-28