

R 78 W

R 77 W

R 76 W

T 46 N

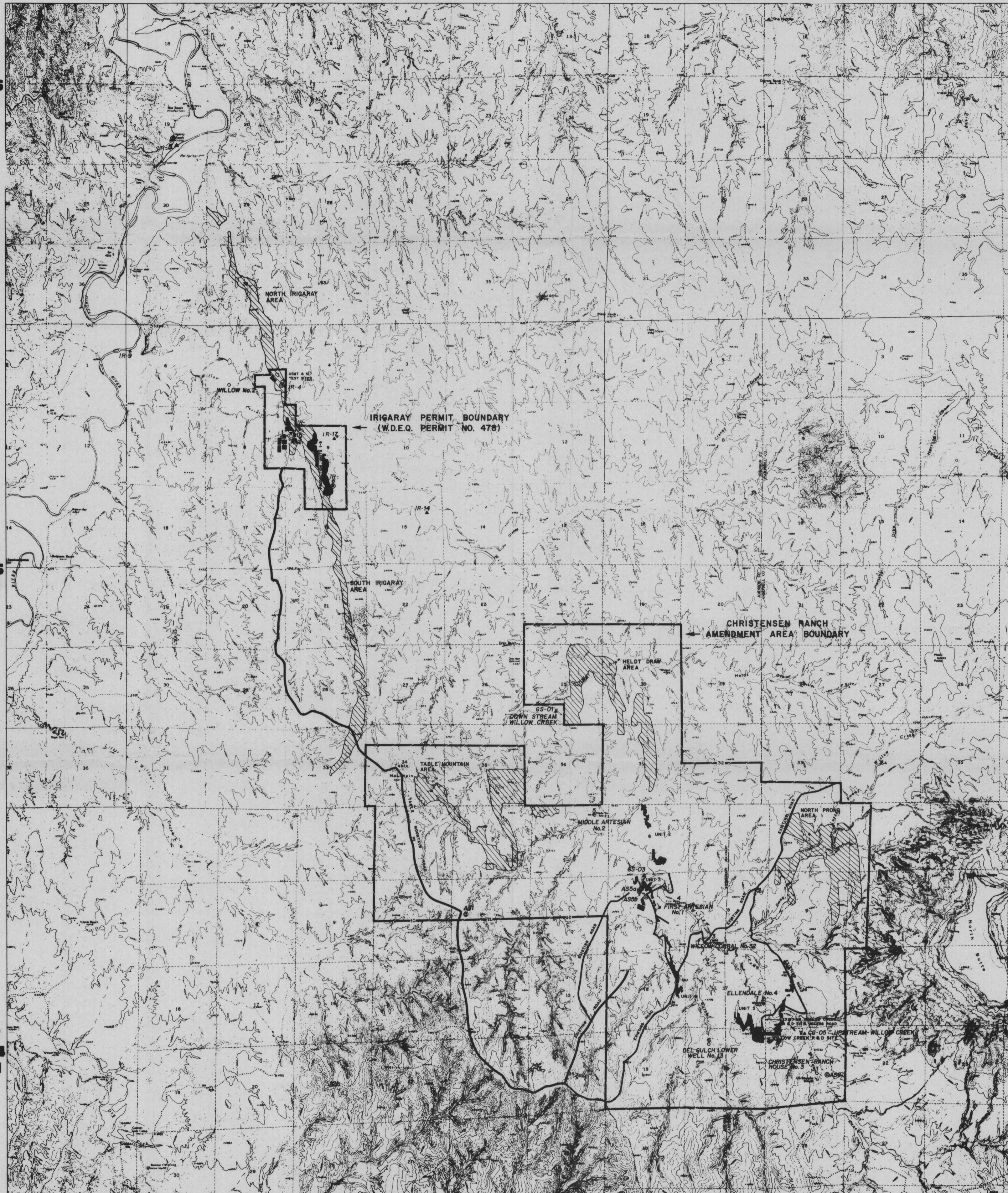
T 46 N

T 45 N

T 45 N

T 44 N

T 44 N



R 78 W

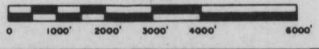
R 77 W

R 76 W

LEGEND

- WELL FIELD ACCESS ROADS
- HAUL ROAD - EXISTING ROAD
- WELLFIELD AREA
- DRAINAGE CULVERT LOCATION AND NUMBER
- TOPSOIL STOCKPILE LOCATION (SIZE APPROXIMATE)
- EVAPORATION PONDS
- ▨ FUTURE AREA OF DEVELOPMENT
- AIR SAMPLE LOCATION (RADON AND PARTICULATE)
- ⊙ AIR SAMPLE LOCATION (RADON AND PARTICULATE)
- ⊙ VEGETATION SAMPLE LOCATION
- ⊙ SOIL SAMPLE LOCATION
- ⊙ DIRECT RADIATION MONITOR LOCATION
- ⊙ AIR SAMPLE LOCATION (RADON)
- ⊙ VEGETATION SAMPLE LOCATION
- ⊙ SOIL SAMPLE LOCATION
- ⊙ DIRECT RADIATION MONITOR LOCATION
- STOCK & DOMESTIC WELL SAMPLE LOCATION
- REGIONAL GROUNDWATER MONITORING
- ▲ UPSTREAM & DOWNSTREAM SURFACE WATER SAMPLE LOCATION

D-03



COGEMA Mining, Inc.
 P.O. Box 730 348th, Wyoming 82644

PROJECT: IRIGARAY & CHRISTENSEN RANCH
 JOHNSON & CAMPBELL COUNTIES, WYOMING

TITLE: Irigaray and Christensen Ranch Environmental Monitoring Station Locations

DATE: BY: S.L. DICKENS
 DRAFTED BY: SMITH DATE: 4/26/97

SCALE: 1" = 1000'

FIGURE NO. 5.5