

# Nebraska Public Power District

## Cooper Nuclear Station

---

Main Steam Line Isolation Valve  
Leakage Pathway  
License Condition 2.C.(6)

# **Agenda and Participants**

---

- **Introduction and Overview**

- ▢ Paul Fleming (Licensing and Regulatory Affairs Manager)

- **Background and History**

- ▢ Bill Victor (Sr. Licensing Engineer)

- **Actions Taken and Current Status**

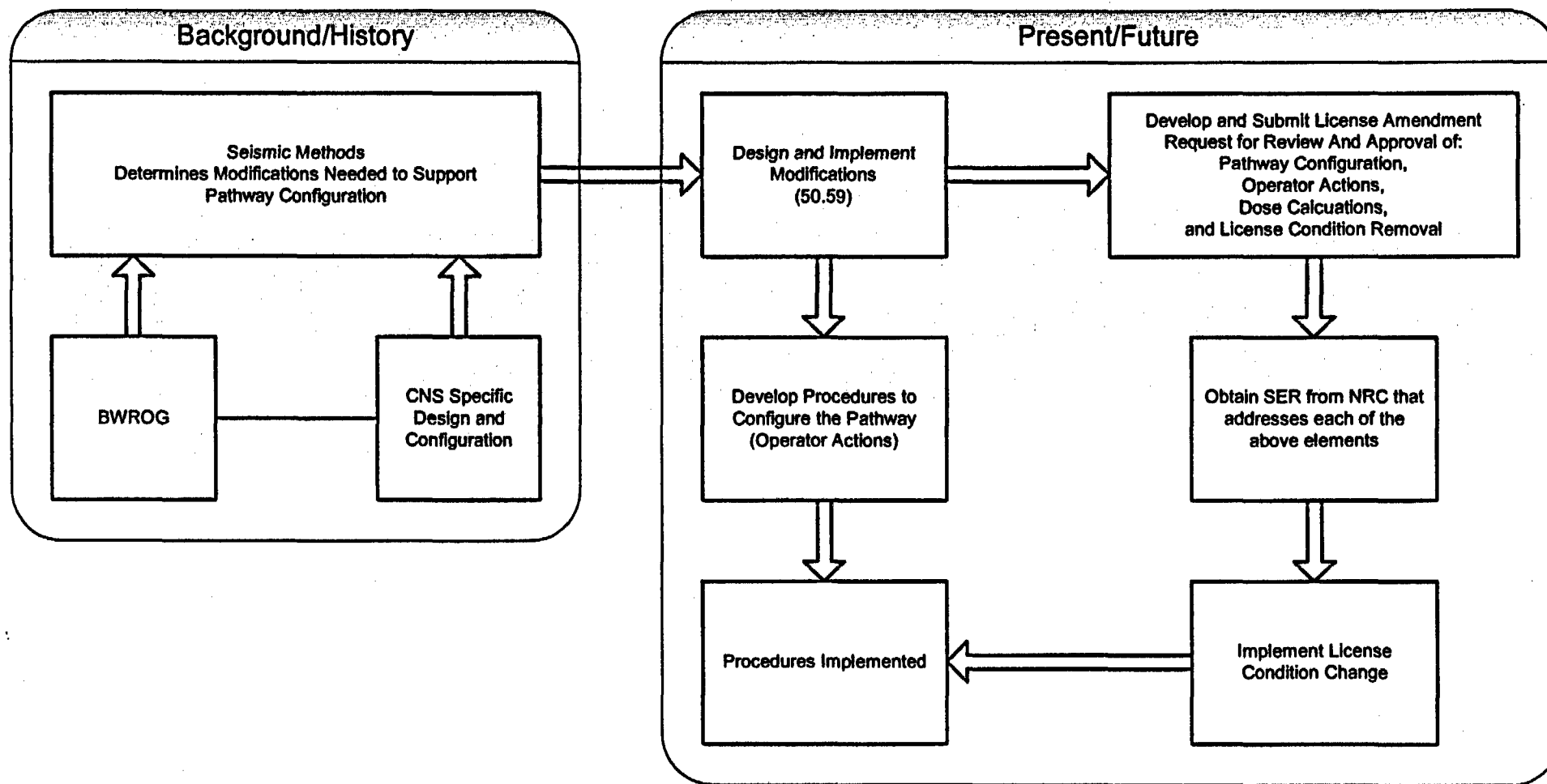
- ▢ Dan Buman (Assistant Design Engineering Manager)

- **Planned Actions**

- ▢ Paul Fleming

- **Summary and Questions**

# Introduction and Overview



# Introduction and Overview (cont.)

---

## ■ License Condition 2.C.(6):

- ▢ Upon receiving NRC approval of the licensee's seismic evaluation of the Main Steam Isolation Valve Leakage Pathway to the Main Turbine Condenser, the Main Turbine Condenser, and the Turbine Building, the licensee shall fully implement the approved request, including the associated modifications, prior to restart from Refueling Outage 22. Until implementation is completed, potassium iodide will continue to be made available to Control Room personnel during a loss-of-coolant accident with core damage.

# Background and History

---

- 4 License Amendments associated with the MSIV Leakage Pathway since 1994
  - ▢ License Amendment 167
    - Increased CREFS fan capacity
    - NRC questioned use of non-seismic SSCs
    - KI used as interim measure
  - ▢ License Amendment 183
    - New off-site/on-site DBA Dose Calcs
    - NRC required seismic MSIV Leakage Pathway
    - One Cycle Approval For LOCA Dose Calculation
    - License Condition 2.C.(6) issued

# **Background and History** (cont.)

---

## ■ 4 License Amendments (cont.)

### ▢ License Amendment 187

- Approved FHA Dose Calculation
- Approved CREFS TS Change
- Extended approval of LOCA Dose Calculation

### ▢ License Amendment 196

- Approved CRDA and MSLBA Dose Calculations
- Interim approval of Revised LOCA Dose Calculation
- Approved Seismic Methodology
- Revised License Condition 2.C.(6)

# Actions Taken and Current Status

---

## ■ Seismic Analysis Complete

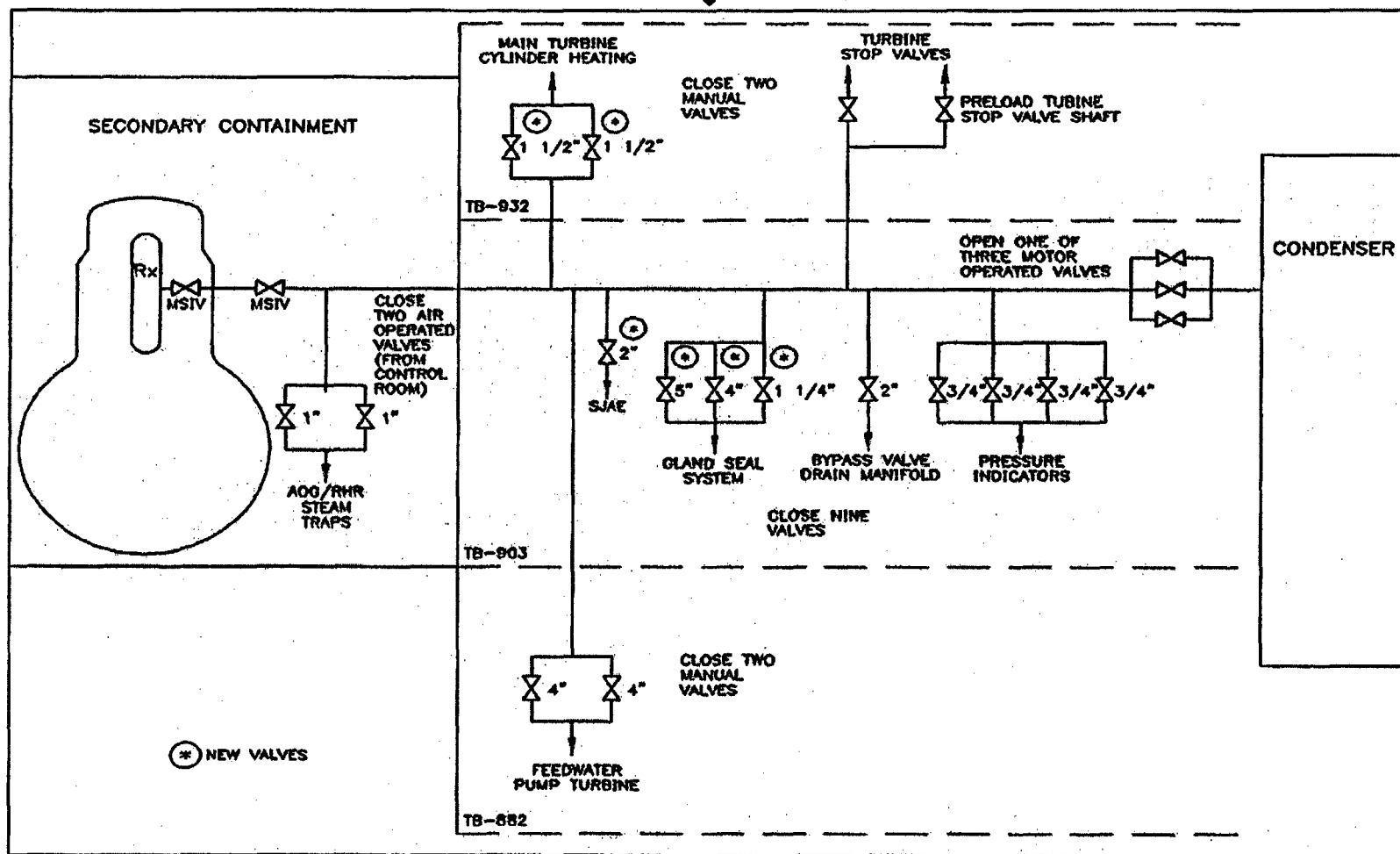
### ▢ Modifications Installed

- New Isolation Valves installed
- Hanger Upgrades
- Instrument Rack Anchorage
- Valve Support Bracket Anchorage
- Emergency Lighting

## ■ Procedures Revised, Validation Completed

- ### ▢ On hold pending NRC approval

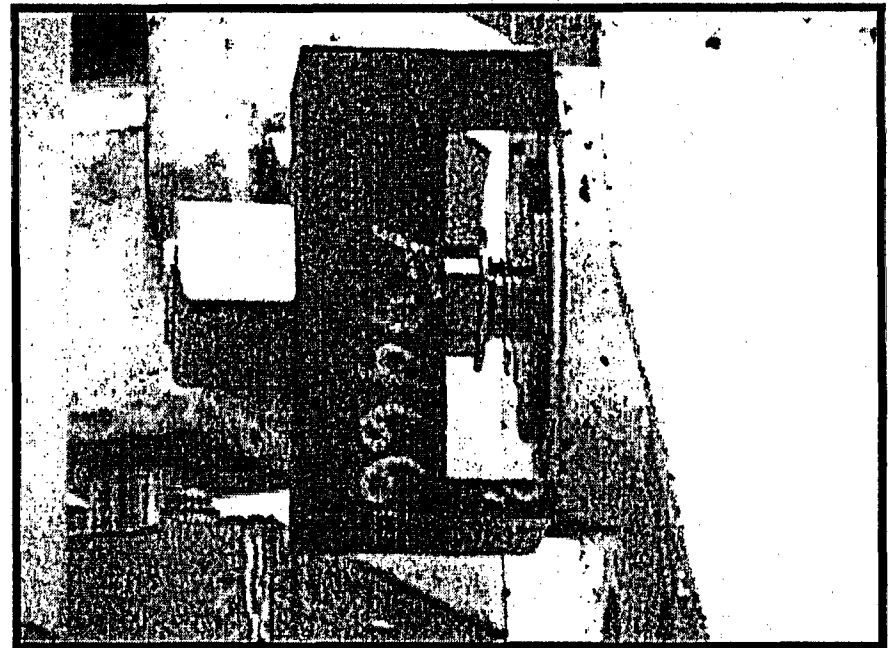
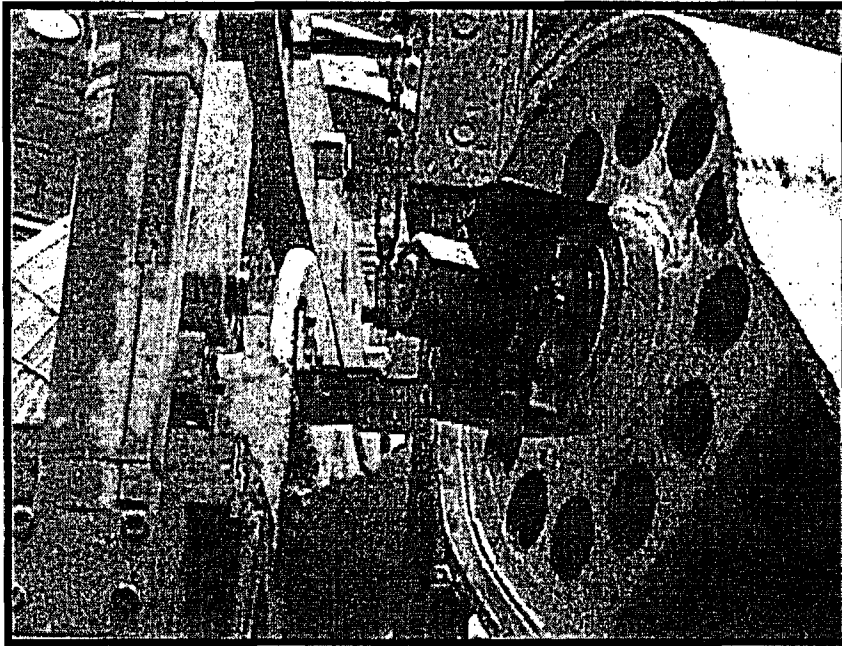
(cont.)





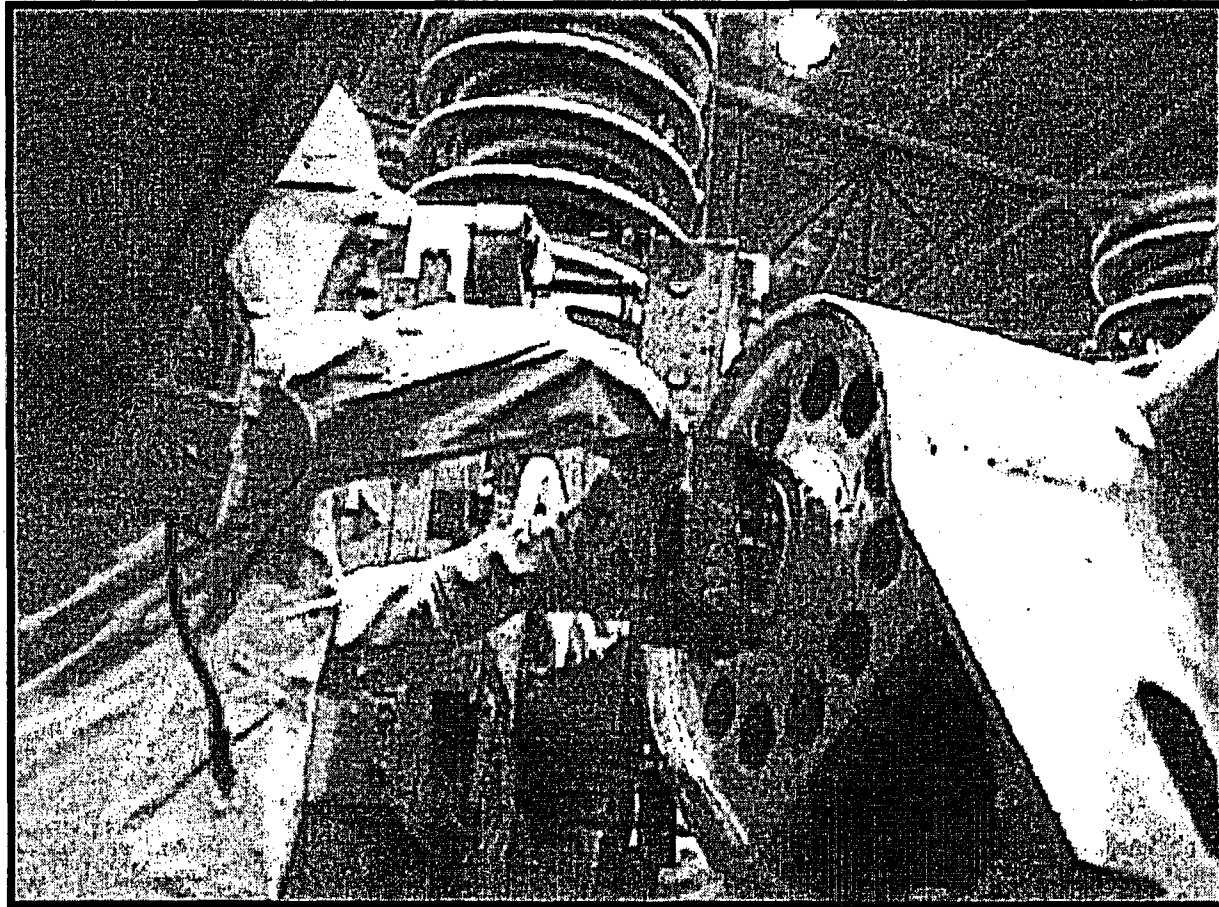
# Actions Taken and Current Status (cont.)

---



# Actions Taken and Current Status (cont.)

---



# Planned Actions

---

## ■ Docket the Following Information

- ▣ List of Plant Modifications used to Configure the Pathway
- ▣ List of Operator Actions Relied Upon to Configure the Pathway
- ▣ Request NRC to Review and Approve the Operator Actions

## ■ Upon Receiving the Approval

- ▣ Submit a License Change Request for Permanent Approval of the LOCA Dose Calculation and License Condition Removal

---

# **Summary and Questions**