

(Return to WM, 623-SS)

Memorandum For: Robert E. Browning, Director
Division of Waste Management

From: Paul T. Prestholt, Senior On-Site Licensing
Rep. NNWSI

Subject: NNWSI Site Report for Week of Feb. 13, 1984

1. I received and reviewed the draft "Standard Review Plan for Draft Environmental Assessments." The document is full of typos and is in need of polishing before it leaves the Division. It should be noted that the siting guidelines (A 1.2, page 6) and the detailed outline for the E.A. make no mention or provision for issues in structural geology or stratigraphy. During production of the BWIP SCA, issues in these two areas were not adequately covered by the hydrology or design groups and were picked up in Chapter 4, geology/geologic stability. A number of important issues could have "slipped through the cracks" and these topics should be provided for in the Draft Standard Review Plan for E.A.'s.
2. The accident that occurred on Wednesday, Feb. 15 at Rainier Mesa was the result of the nuclear test "Midas Myth/Milagro." The explosion took place 1168 feet below Rainier Mesa in a "tunnel dug through hard rock." The test took place at 09:00 and the collapse occurred at 12:15 PM. The crater measured 10' to 30' deep, 60' wide and 150' long. DOE stated that the ground collapse was "unusual and not expected."

NV 843669

265

193

36

2-17-84

PDR

PDR

WM-11

PDR

WM-11

PDR

PDR

WM-11

PDR

WM-11

PDR

PDR

WM-11

PDR

WM-11

PDR

PDR

WM-11

PDR

WM-11

PDR

PDR

WM-11

PDR

WM-11

PDR

PDR

WM-11

PDR

WM-11

PDR

PDR

WM-11

PDR

WM-11

PDR

PDR

WM-11

PDR

WM-11

PDR

PDR

WM-11

PDR

WM-11

PDR

PDR

WM-11

PDR

WM-11

PDR

PDR

WM-11

PDR

WM-11

PDR

PDR

WM-11

PDR

WM-11

PDR

PDR

WM-11

PDR

WM-11

PDR

PDR

WM-11

PDR

WM-11

PDR

PDR

WM-11

PDR

WM-11

PDR

PDR

WM-11

PDR

WM-11

PDR

PDR

WM-11

PDR

WM-11

PDR

PDR

WM-11

PDR

WM-11

PDR

PDR

WM-11

PDR

WM-11

PDR

PDR

WM-11

PDR

WM-11

PDR

PDR

WM-11

PDR

WM-11

PDR

PDR

WM-11

PDR

WM-11

PDR

PDR

WM-11

PDR

WM-11

PDR

PDR

WM-11

PDR

WM-11

PDR

PDR

WM-11

PDR

WM-11

PDR

PDR

WM-11

PDR

WM-11

PDR

PDR

WM-11

PDR

WM-11

PDR

PDR

WM-11

PDR

WM-11

PDR

PDR

WM-11

PDR

WM-11

PDR

PDR

WM-11

PDR

WM-11

PDR

PDR

WM-11

PDR

WM-11

PDR

PDR

WM-11

PDR

WM-11

PDR

PDR

WM-11

PDR

WM-11

PDR

PDR

WM-11

PDR

WM-11

PDR

PDR

WM-11

PDR

WM-11

PDR

PDR

WM-11

PDR

WM-11

PDR

PDR

WM-11

PDR

WM-11

PDR

PDR

WM-11

PDR

WM-11

PDR

PDR

WM-11

PDR

WM-11

PDR

PDR

WM-11

PDR

WM-11

PDR

PDR

WM-11

PDR

WM-11

PDR

PDR

WM-11

PDR

WM-11

PDR

PDR

WM-11

PDR

WM-11

PDR

PDR

WM-11

PDR

WM-11

PDR

PDR

WM-11

PDR

WM-11

PDR

PDR

WM-11

PDR

WM-11

PDR

PDR

WM-11

PDR

WM-11

PDR

PDR

WM-11

PDR

WM-11

PDR

PDR

WM-11

PDR

WM-11

PDR

PDR

WM-11

PDR

WM-11

PDR

PDR

WM-11

PDR

WM-11

PDR

PDR

WM-11

PDR

WM-11

PDR

PDR

WM-11

PDR

WM-11

PDR

PDR

WM-11

PDR

WM-11

PDR

PDR

WM-11

PDR

WM-11

PDR

PDR

WM-11

PDR

WM-11

PDR

PDR

WM-11

PDR

WM-11

PDR

PDR

WM-11

PDR

WM-11

PDR

PDR

WM-11

PDR

WM-11

PDR

PDR

WM-11

PDR

WM-11

PDR

PDR

WM-11

PDR

WM-11

PDR

PDR

WM-11

PDR

WM-11

PDR

PDR

WM-11

PDR

WM-11

PDR

PDR

WM-11

PDR

WM-11

PDR

PDR

WM-11

PDR

WM-11

PDR

PDR

WM-11

PDR

WM-11

PDR

PDR

WM-11

PDR

WM-11

PDR

PDR

WM-11

PDR

WM-11

PDR

PDR

WM-11

PDR

WM-11

PDR

PDR

WM-11

PDR

WM-11

PDR

PDR

WM-11

PDR

The event measured 4.9 on the Richter scale according to the National Earthquake Information Center in Denver and between 4.5 and 5 at the University of Nevada at Las Vegas (UNLV).

I will try to find out more about the "hard rock" in which the event took place but for the moment it should be assumed to have been Tuff, probably non-welded.

3. I met with Jerry Szymanski, the DOE individual who will be working licensing and regulatory matters. Jerry was a member of the DOE salt team in Columbus and arrived in Las Vegas last Monday. Jerry's first task (with Mike Gloriz, SAI) will be to set down the details of WMPO's compliance with the provisions of the Bennett-Browning letter (Site Specific Agreement). I have been asked to review this work. I will be given a copy of the Bennett-Browning letter this afternoon and copies of the first working drafts of the WMPO's response. I will forward copies to the division as appropriate



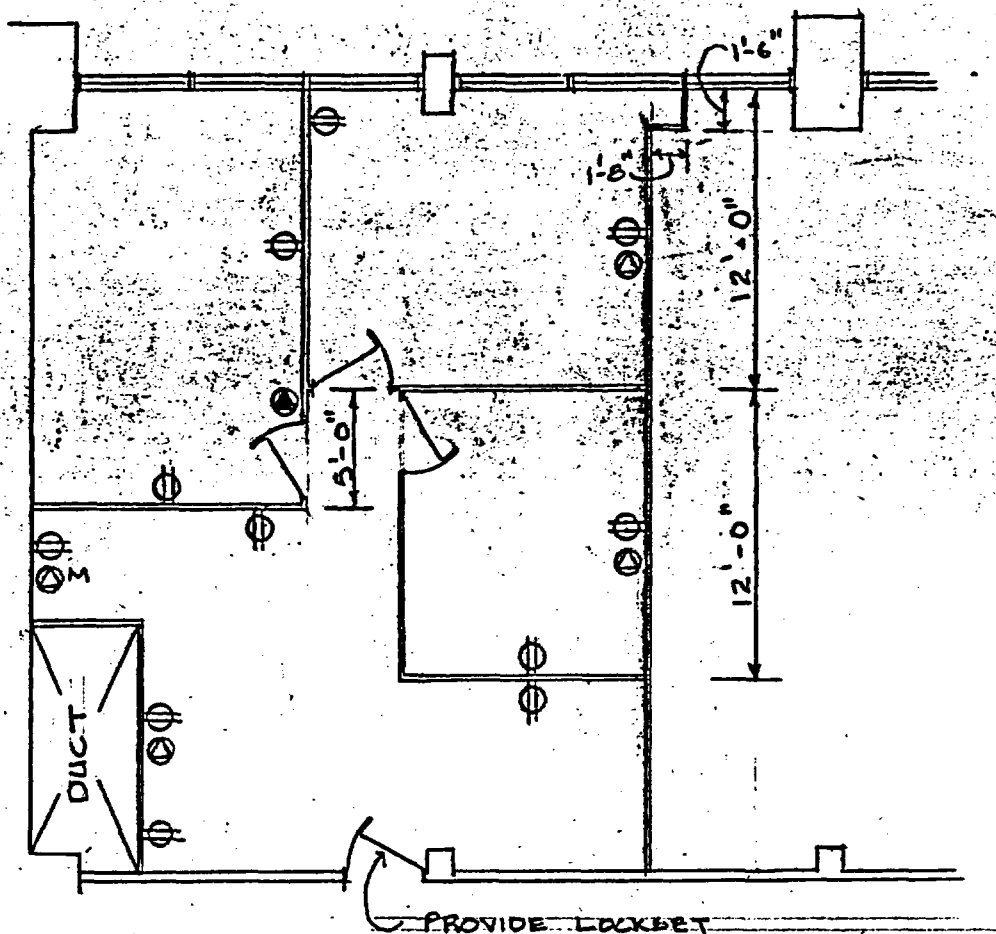
Senior On-Site Licensing Rep.
NDWSI.

C.C. Coplen
Verma
Cook

Regular Distribution

Enclosed: Sketches of the permanent NRC office space at 1050 Flamingo, Las Vegas

U. S. NUCLEAR REGULATORY COMMISSION
SKETCH SHEET



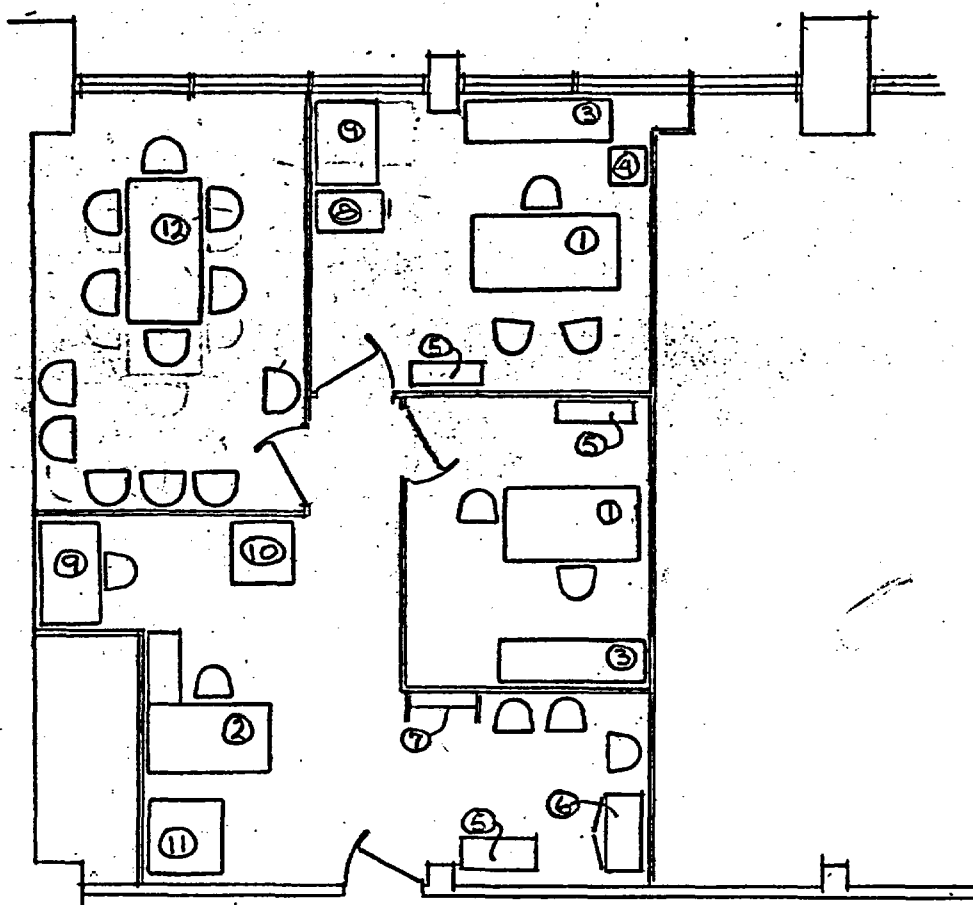
KEY:

- ⊗ WALL MOUNTED ELECTRIC - STANDARD DUPLEX
- ⊙ WALL MOUNTED TELEPHONE - STANDARD HEIGHT
- ⊙ WALL MOUNTED TELEPHONE - 5'-0" ± ABOVE FLOOR
- ⊙M WALL MOUNTED TELEPHONE MODEM

NRC OFFICE
INITIAL TENANT ALTERATIONS -- LAS VEGAS

MADE BY	CHECKED BY	APPROVED	SCALE $\frac{1}{8}" = 1'-0"$
DATE 2/6/84			SHEET NO.
			JOB NO.

SKETCH SHEET



KEY:

- 1 DESK
- 2 SECRETARIAL DESK
- 3 CREDENZA
- 4 TELEPHONE STAND
- 5 BOOKCASE
- 6 STORAGE CABINET
- 7 COAT RACK
- 8 FILE
- 9 COMPUTER TERMINAL (5520)
- 10 COMPUTER PRINTER
- 11 REPRODUCTION MACHINE
- 12 CONFERENCE TABLE

MADE BY	CHECKED BY	APPROVED	SCALE
			SHEET NO.
DATE			JOB NO.