



UNITED STATES
NUCLEAR REGULATORY COMMISSION
WASHINGTON, D. C. 20555

Reply to:
1050 East Flamingo Road
Suite 319
Las Vegas, Nevada 89119
Tel: (702) 388-6125
FTS: 598-6125

TO: John J. Linehan, Director, HLPD
Division of High-Level Waste Management, M/S 4-H-3

FROM: Paul T. Prestholt, Sr. On-Site Licensing Representative

DATE: January 9, 1990

SUBJECT: WEEKLY ACTIVITY REPORT, PROTOTYPE TESTING (2)

Please find enclosed the above-referenced reports received in this office, i.e., week ending December 10, 1989 and December 24, 1989. (December 10 had been omitted in an earlier mailing.)

PTP:nan
Enclosure

cc: Carl Johnson
Agency for Nuclear Projects
Nuclear Waste Project Office
Capitol Complex
Carson City, Nevada 89710

9001160125 900109
PDR WASTE
WM-11 PDC

FULL TEXT ASCII SCAN

102
WM-11
NH03

WEEKLY ACTIVITY REPORT
PROTOTYPE TESTING
Week Ending - December 24, 1989

Participants:

Los Alamos - Manage and Integrate Prototype Testing and conduct tests.

Sandia National Laboratories - Manage the operations at G-Tunnel and perform tests.

U. S. Geological Survey (U. S. Bureau of Reclamation, and Lawrence Berkeley Laboratory) - Perform tests.

Lawrence Livermore National Laboratory - Perform tests.

Holmes and Narver - Provide surveying and other support.

Fenix and Scisson of Nevada - Provide plans, test networks, and cost estimates.

REECo - Provide mining equipment, perform drilling and mining, and provide support labor.

Pan Am - Provide photographic support.

Shutdown Activities for this Reporting Period:

USGS

USGS personnel completed the removal of their equipment from G-Tunnel, and have transported it to Mercury for further shipment to USGS/Denver. The USGS trailer was removed from the yard.

LANL

LANL personnel completed removal of their equipment from the G-Tunnel facility and have it ready for shipment to Los Alamos. The SNL/TMO trailer was vacated and turned back to SNL operations.

LLNL

LLNL personnel completed the removal of their equipment from G-Tunnel. REECo cleaned and salvaged remaining instrument cables from the test area. The LLNL trailer was removed from the yard.

SNL

SNL completed the removal of their equipment and materials.

G-Tunnel Walk-through:

The walk-through was conducted on December 19, 1989. A memo to that effect has been distributed (Reference TWS-EES-1-LV-12-89-24.) The facility was found ready for closure with the exception of minor housekeeping items that were resolved by December 22, 1989.

EXPENDITURES:

	Work Days Remain <u>192</u>	Expended <u>25</u> %
.REECO: Current Week-Prototype Testing	\$ 192	Year to Date \$115,107
.REECO: Current Week-G-Tunnel Closeout	\$ 25,045	Year to Date \$115,639
.REECO: Current Week-G-Tunnel Operation	\$ 265	Year to Date \$310,171
.H&N: Current Week-Prototype Testing	\$ *	Year to Date \$ *
.F&S: Current Week-Prototype Testing	\$ *	Year to Date \$ *

* This information not available at the time of this report.

WEEKLY ACTIVITY REPORT
PROTOTYPE TESTING
Week Ending - December 10, 1989

Participants:

Los Alamos - Manage and Integrate Prototype Testing and conduct tests.

Sandia National Laboratories - Manage the operations at G-Tunnel and perform tests.

U. S. Geological Survey (U. S. Bureau of Reclamation, and Lawrence Berkeley Laboratory) - Perform tests.

Lawrence Livermore National Laboratory - Perform tests.

Holmes and Narver - Provide surveying and other support.

Fenix and Scisson of Nevada - Provide plans, test networks, and cost estimates.

REECo - Provide mining equipment, perform drilling and mining, and provide support labor.

Pan Am - Provide photographic support.

Shutdown Activities for this Reporting Period:

The LANL/TMO held meetings with REECo, SNL, and NTSO personnel and reviewed the G-Tunnel shutdown plan and schedule. A walkthrough inspection is planned for December 19, 1989. The facility closing date is scheduled for December 22, 1989.

USGS

USGS personnel arrived at G-Tunnel December 5, 1989. They have removed approximately half of their equipment and transported it to Mercury for further shipment to USGS/Denver. The other half of their equipment will be removed the week of December 11, 1989.

LANL

LANL personnel will be at G-Tunnel December 18, 1989, to remove their equipment.

LLNL

LLNL personnel will be at G-Tunnel December 11, 1989, to remove their equipment.

SNL

SNL removed all of their equipment except for the Bally building which is located in the Experiment Drift. The Bally building will be removed on December 12, 1989.

YMP Equipment

The following items are ready for shipment to Area 25 subdock:

- 2 - Diamec drills with hydraulic units
- 3 - Dust collectors with attachments
- 3 - Water separators with attachments
- 11 - 12 inch core barrels
- 6 - 10 inch core barrels
- Various drill tools

G-Tunnel Prototype Testing Area

Experiment Drift:

The Experiment Drift is completely cleaned up except for the bally building and the prototype diffusion test equipment.

Demo Drift:

The Demo Drift is about halfway complete. All YMP equipment has been removed from the Demo Drift.

U12G-12 Drift Extension:

USGS has removed half of their equipment from this drift. REECo is transporting other materials from the U12G-12 drift.

LLNL Alcove:

All YMP drilling equipment has been removed. REECo is cleaning up this alcove.

Laser Drift:

USGS has removed all equipment. REECo will transport the remaining materials.

Puff and Tuff:

All YMP and USGS materials and equipment have been transported.

CFE Drifts:

No equipment or materials have been transported from these drifts.

EXPENDITURES:

	Work Days Remain	<u>202</u>	Expended	<u>21</u>	%
.REECO: Current Week-Prototype Testing	\$	192	Year to Date	\$114,915	
.REECO: Current Week-G-Tunnel Closeout	\$	39,783	Year to Date	\$ 46,378	
.REECO: Current Week-G-Tunnel Operation	\$	480	Year to Date	\$292,013	
.H&N: Current Week-Prototype Testing	\$	3,068	Year to Date	\$ 21,195	
.F&S: Current Week-Prototype Testing	\$	*	Year to Date	\$ *	

* This information not available at the time of this report.

Los Alamos

Los Alamos National Laboratory
P.O. Box O Mercury, Nev. 89023

WBS 1.2
"QA"

TWS-EES-1-LV-12-89-22
Attachment II
11 Pages

memorandum

TWS-EES-1-LV-12-89-06
Page 1 of 2

December 1, 1989
702/794-7094
FTS/544-7094
M/S 527

To: F. Huckabee, DOE/NTSO

From: H. Kalia, LANL  For

Subject: G-TUNNEL SHUTDOWN

A meeting is scheduled Monday, December 4, 1989, 8:30 a.m. at G-Tunnel with Sandia National Laboratories (SNL) and contract personnel. We will repeat the meeting in your office at 1:30 p.m. on the same day. The meeting agenda and handouts are attached.

If you have any questions, please contact Ron Oliver at FTS 544-7095.

HNK:RDO:kql18

Attachment

Cy: A. Girdley, DOE/YMP, MS 523
U. Clanton, DOE/YMP, MS 523
W. Wilson, DOE/YMP, MS 523
R. Bullock, FSN, MS 403
J. Calovini, H&N, MS 519
L. Jardine, LLNL, P.O. Box 808, Livermore, CA 94550
A. Rameriz, LLNL, Box 808, Livermore, CA 94551
B. Edwards, REEC, MS 140
L. Atkinson, REEC, MS 145
R. Pritchett, REEC, MS 408
N. Stellavato, SAIC, MS 517
R. Dye, SNL/NTS, MS 944
J. Talbutt, SNL/NTS, MS 944
T. Blejwas, SNL, Box 5800, Albuquerque, NM 87185
T. Hunter, SNL, Box 5800, Albuquerque, NM 87185
R. Craig, USGS, MS 509
L. Hayes, USGS, P.O. Box 25046, Denver, CO 80225
R. Herbst, LANL, EES-13, MS J521
W. Morris, LANL, EES-1, MS D462
A. Norris, LANL, INC-7, MS J514
R. Oliver, LANL, EES-1/LV, MS 527
S. Francis, LANL, MEE-4/LV, MS 527

F. Huckabee, DOE/NTSO
G-TUNNEL SHUTDOWN
December 1, 1989

TWS-EES-1-LV-12-89-06
Page 2 of 2

Cy: EES-1/LV, MS 527
N. Elkins, LANL, EES-1/LV, MS 527
EES-1/LV, MS 527
RPC Files, LANL, MS M321 (2)
CRM-4, LANL, MS A150

sd1.gal

11-30-89

G-TUNNEL SHUTDOWN ACTIVITY PLANNING MEETING

AGENDA

- ⇒ Review C. Gertz Shutdown Letter
- ⇒ Activity Organization
- ⇒ Shipping Form
- ⇒ YMP Test Equipment & Core
- ⇒ YMP Construction & Drilling Equipment
- ⇒ Schedule

PRELIMINARY DRAFT

John D. Stewart, Director, NTSO

CLOSE-DOWN OF YUCCA MOUNTAIN PROJECT ACTIVITIES IN G-TUNNEL (NN1-1990-

Based on Fiscal Year 1990 budgeting restraints, changed project priorities, and information provided in the enclosed letter it is my decision to discontinue all Yucca Mountain Project activities in G-Tunnel. Tours, as well as prototype testing, will no longer be conducted, and current plans do not call for resuming work in G-Tunnel at a future date.

Please direct the appropriate Nevada Test Site (NTS) contractors to prepare a work order for complete shutdown of Yucca Mountain Project activities in G-Tunnel according to Option 1 in the enclosed letter; the current operational support work order should be closed immediately in order that shutdown costs can be accurately recorded.

I request that the appropriate NTS personnel coordinate the shut-down activity regarding tools, equipment, and other test-related items with the Los Alamos National Laboratory Test Manager's Office which will provide information in the very near future on disposition of such items. In general, I expect that heavy equipment (i.e., drills, etc.) will be moved to the Area 25 subdock; cores and some crated items will go to the Sample Management Facility. We expect to identify, in the next few days, a storage facility for remaining, miscellaneous items that may require dry storage.

I understand that actual costs related to environmental restoration are presently unknown and Yucca Mountain Project's share cannot be identified at this time. However, it is recognized that some future assessment to the Yucca Mountain Project based on equitable use proration will be forthcoming as part of final close-out costs.

I request that the shutdown be accomplished by December 31, 1989, if possible.

Further questions and status of progress should be communicated through W. Arch Girdley of my staff at 794-7584.

YMP:WAG-1031

Carl P. Gertz, Project Manager
Yucca Mountain Project Office

Enclosure:

Ltr 11/29/89 Pritchett to Gertz

memorandum

TWS-EES-1-LV-11-89-53

Page 1 of 3 11-30-89 *ams*FAX MEMO

November 30, 1989

702/794-7094

FTS/544-7094

M/S 527

To: T. Blejwas, SNL
A. Ramirez, LLNL
R. Craig, USGS
A. Norris, LANL

FROM: H. Kalia, LANL/TMO *H. Kalia*

SUBJECT: REMOVAL OF EXPLORATORY SHAFT FACILITY PROTOTYPE TEST
EQUIPMENT FROM G-TUNNEL

The Yucca Mountain Project Office has determined that the prototype testing at G-Tunnel will come to an end. Planning is underway by the Los Alamos Test Manager's Office to remove all YMP testing equipment and materials from the G-Tunnel complex by December 22, 1989.

Arrangements are being made to temporarily store some prototype equipment and materials at the SMF Yard or the YMP subdock in Area 25. Since these are outside storage areas, arrangements should be made for all equipment or material that will be affected by the weather to be stored at each organizations' warehouse until arrangements can be made for shipment off of the NTS.

It is requested that a representative from each testing organization be present at G-Tunnel by 8:00 a.m. on December 5, 1989 to begin identification of equipment for shipping.

Attached is the YMP G-Tunnel Shutdown Shipping Form. A sample form has also been filled out for your convenience. Any questions can be addressed to Steve Francis; FTS 544-7272 or FTS 575-4726.

HNK:SDF:kc58

W. A. Girdley 12-1-89
YMPO Concurrence

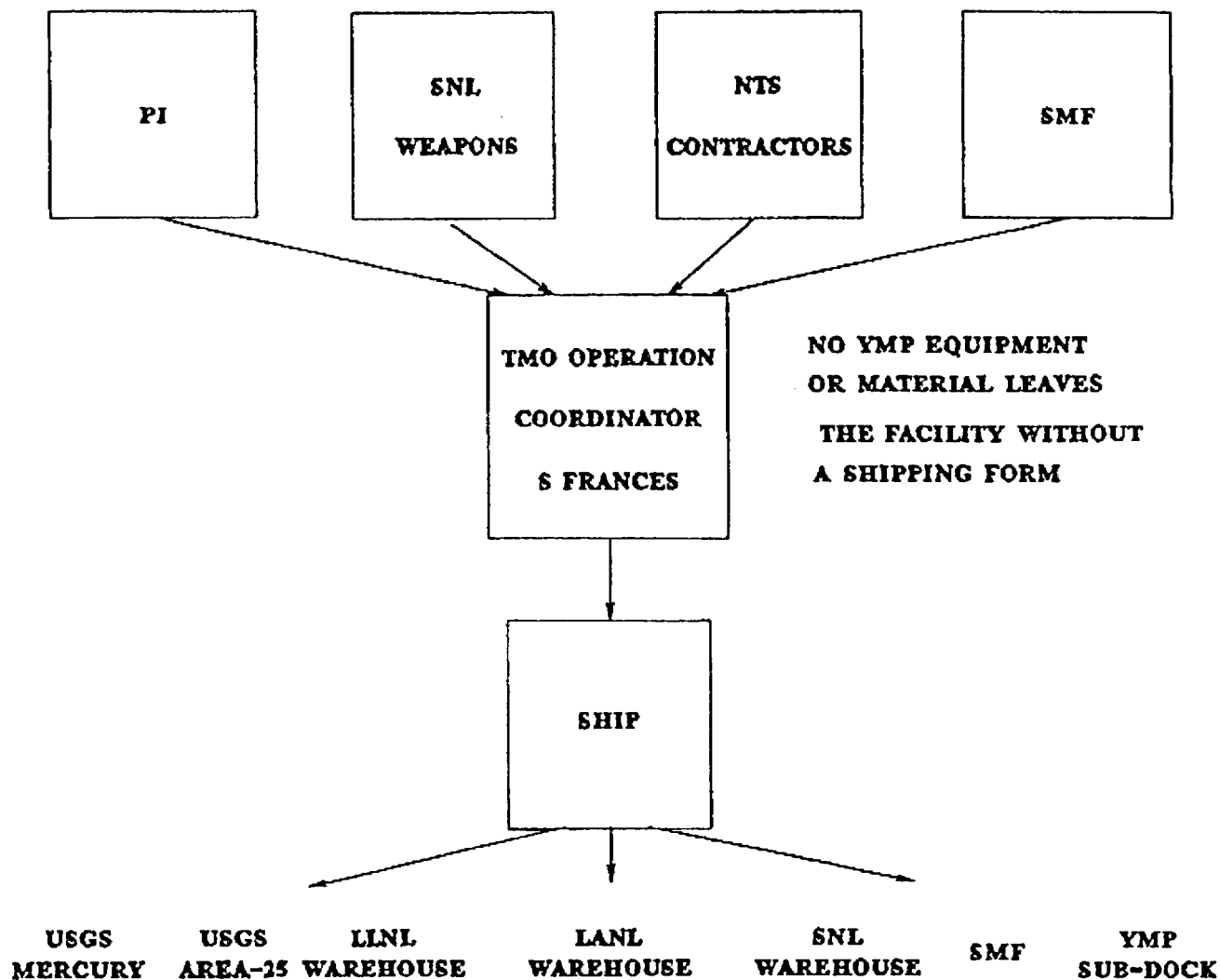
Attachment

Cy: A. Girdley, DOE/YMP, MS 523
J. Calovini, H&N, MS 519
R. Pritchett, REECO, MS 408
R. Bullock, F&S, MS 403
R. Herbst, EES-13, MS J521
W. Morris, EES-1, MS D462
EES-1/LV Files, MS 527
RPC Files, Los Alamos, MS M321 (2)
CRM-4, Los Alamos, MS A150, w/o attach.

G-TUNNEL SHUTDOWN

1-6-90
11-30-90

ACTIVITY ORGANIZATION



All issues will be resolved through the TMO staff coordinator

All material will be released from the facility using the "Shipper Form"

Copies of construction equipment manuals will be attached to shipper forms

G-TUNNEL SHUTDOWN

SUGGESTED CONTAINER AND PACKING MATERIALS

⇒ DOT USED 55 GAL. BARRELS

**REECo stock - RS1-1237-5510
Warehouse R**

⇒ PACKING SUPPLIES

⇒ EQUIPMENT PALLETIZATION

⇒ TARPS (AREA-25)

⇒ BANDING EQUIPMENT

⇒ CONTAINER & EQUIPMENT LABELS

YMP G-TUNNEL SHUTDOWN SHIPPING FORM

Green Tag Number _____

Date _____ Test code _____

Lot Number _____

Requester Org. _____
Number of Items ____ of ____

Requester _____ TMO Concurrence _____

Packing Instructions

Shipping Instructions

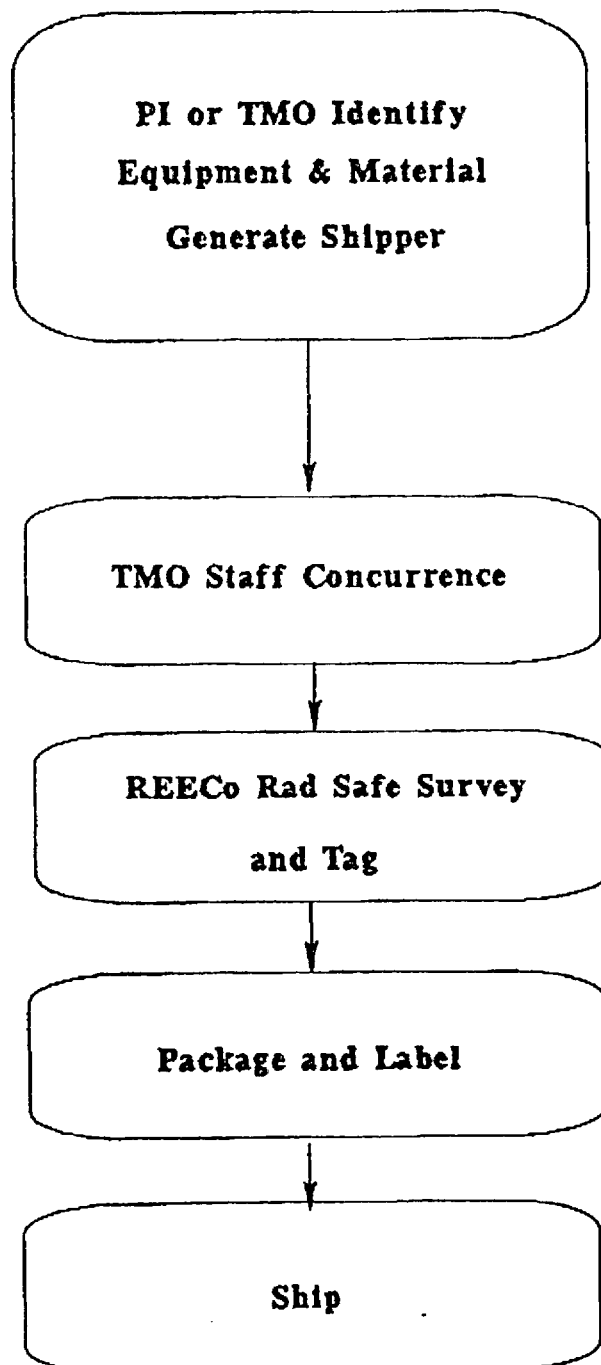
Item Description

Item Inventory

G-TUNNEL SHUTDOWN

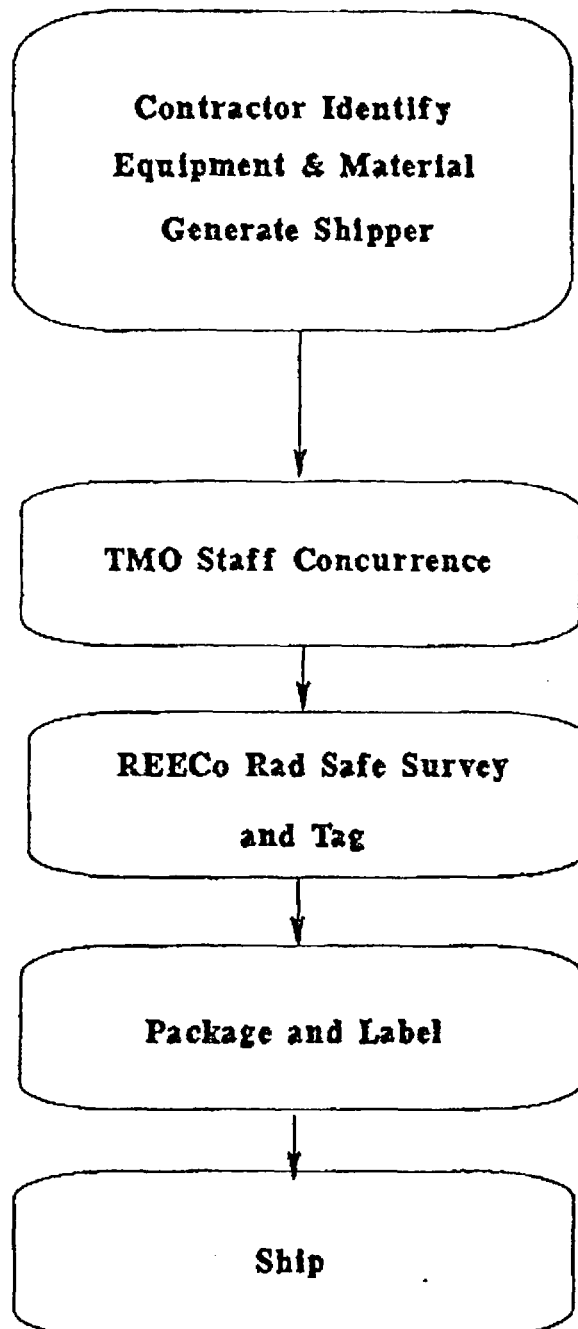
sd3.gai
11-30-89

YMP Test Equipment & Core



G-TUNNEL SHUTDOWN

YMP Construction and Drilling Equipment



ORIG DUR	PCT	EARLY START	EARLY FINISH	
				6-TUNNEL SHUT DOWN ACTIVITIES
2	0	30NOV89	1DEC89	CARL GERTZ 6-TUNNEL SHUT DOWN LETTER
0	0	1DEC89	30NOV89	CLOSE ALL TEST WORK ORDERS
1	0	4DEC89	4DEC89	NTS PLANNING MEETING
4	0	5DEC89	8DEC89	ORDER SHIPPING MATERIAL
9	0	5DEC89	15DEC89	P.T. EQUIPMENT & CORE REMOVAL
5	0	11DEC89	15DEC89	HGN SURVEY EQUIPMENT REMOVAL
14	0	5DEC89	22DEC89	BEECO REMOVE YNPQ EQUIPMENT
8	0	7DEC89	18DEC89	SME REMOVE UNCLAIMED CORE
0	0	25DEC89	22DEC89	CLOSE FACILITY FOR YNP ACTIVITY

LEGEND

Activity Activity Start/End Dates

Activity Activity Start/End Dates

Activity Activity Start/End Dates

LOS ALAMOS TWO OFFICE

LOS ALAMOS NATIONAL LABORATORY

G-TUNNEL SHUT DOWN SCHEDULE

Project Start: 200000

Project Finish: 200000

Date: 200000

Plot Date: 200000

LEGEND

Activity Activity Start/End Dates

Activity Activity Start/End Dates

Activity Activity Start/End Dates

LOS ALAMOS TWO OFFICE

LOS ALAMOS NATIONAL LABORATORY

G-TUNNEL SHUT DOWN SCHEDULE

Project Start: 200000

Project Finish: 200000

Date: 200000

Plot Date: 200000

LEGEND

Activity Activity Start/End Dates

Activity Activity Start/End Dates

Activity Activity Start/End Dates

LOS ALAMOS TWO OFFICE

LOS ALAMOS NATIONAL LABORATORY

G-TUNNEL SHUT DOWN SCHEDULE

Project Start: 200000

Project Finish: 200000

Date: 200000

Plot Date: 200000