

JUN 16 1988

MEMORANDUM FOR: Francis X. Cameron, Rulemaking Division  
 Bernard M. Bordenick, Hearing Division  
 Office of the General Counsel

FROM: Joseph O. Bunting, Jr, Chief  
 Systems Engineering and Evaluation Branch  
 NRC/CNWRRA Program Manager  
 Division of High-Level Waste Management

SUBJECT: PROGRAM ARCHITECTURE GLOSSARY OF TERMS FOR HLW

Enclosed please find the final glossary of terms for Program Architecture-related concepts and the associated logic diagram that depicts their interrelationships. The purpose of this glossary was to provide the Center with a consistent terminology for use in the development of the Program Architecture. Your insights, reviews, comments, and participation in the joint meeting held on June 7th, 1988 with representatives of DHLW and the CNWRA was invaluable.

**Original Signed By**

Joseph O. Bunting, Jr, Chief  
 Systems Engineering and Evaluation  
 Branch  
 NRC/CNWRRA Program Manager  
 Division of High-Level Waste Management

Enclosures (2): As stated

8806280343 880616  
 PDR WASTE  
 WM-1 DCD

OFC: HLSE	:HLSE	:	:	:	:	:	NH19 4/4.15
NAME: MLee	MPW	Bunting	:	:	:	:	N:m-1
DATE: 6.15.88	1/16/88	:	:	:	:	:	Delete LPDR, ad. CNWRA

OFFICIAL RECORD COPY

DEFINITIONS FOR  
PROGRAM ARCHITECTURE TERMINOLOGY

REGULATORY REQUIREMENT

A statement of a requirement pertaining to the high-level waste regulatory system, as quoted from the statute, regulation, or other source which has the force of law.

ELEMENTS OF PROOF

What must be proven to support a conclusion that the REGULATORY REQUIREMENT has been met. This may, or may not, be included in the requirement itself. If not, they must be postulated.

This would include those conditions, specifications, criteria, or procedures which will be the standard by which specific evidence will be compared to evaluate the degree to which the REGULATORY REQUIREMENT has been met.

[CNWRA may amplify, as necessary]

COMPLIANCE DETERMINATION METHOD

How the ELEMENTS OF PROOF can or will be shown to have been met.

Includes those investigative or evaluative procedures, techniques, tests, methods, or any other modes of inquiry, or any combination thereof, that will be acceptable, within the context of NRC's regulatory program, to address the ELEMENTS OF PROOF identified as necessary to demonstrate compliance with a REGULATORY REQUIREMENT. This includes but is not limited to methodologies, models, codes, consensus, certification audits of records, etc.

[CNWRA may amplify, as necessary]

INFORMATION REQUIREMENTS

Information required to execute a COMPLIANCE DETERMINATION METHOD.

This includes but is not limited to facts, test data, plans, analyses, or records.

[CNWRA may amplify, as necessary]

### REGULATORY UNCERTAINTY

Lack of certitude as to what is meant by the REGULATORY REQUIREMENT or with its ELEMENTS OF PROOF, or the adequacy, completeness, and/or necessity of the requirement itself.

REGULATORY UNCERTAINTY may stem from lack of clarity in the quoted statement, the omission of an essential requirement from the regulation, and/or the inclusion of requirements in the regulation that do not contribute to or detract from the regulatory program.

[CNWRA may amplify, as necessary]

### TECHNICAL UNCERTAINTY

Lack of certitude as to how to demonstrate compliance and/or obtain the requisite information (e.g. COMPLIANCE DETERMINATION METHOD or INFORMATION REQUIREMENTS, respectively).

[CNWRA may amplify, as necessary]

### INSTITUTIONAL UNCERTAINTY

The lack of certitude regarding the roles, missions, actions, and schedules of agencies with REGULATORY REQUIREMENTS that effect the high-level waste regulatory program, their impacts, or their integration with NRC's regulatory program.

[CNWRA may amplify, as necessary]

### UNCERTAINTY QUESTION

A component of an uncertainty -- An expression of inquiry that calls for a reply.

To resolve a specific TECHNICAL, REGULATORY, or INSTITUTIONAL UNCERTAINTY, one or more questions will arise that require information to obtain an answer or make a reply. The resolution of uncertainty is dependent upon the answer(s) to the question(s) which, in turn, is dependent on the specific information.

[CNWRA may amplify, as necessary]

OPEN ITEMS

Those REGULATORY, TECHNICAL, or INSTITUTIONAL UNCERTAINTIES, COMPLIANCE DETERMINATION METHODS, INFORMATION REQUIREMENTS, UNCERTAINTY QUESTIONS, and decisions, both "proactive" and "reactive," that have been approved by the Program Architecture Configuration Authority for inclusion in the Open Item Tracking Module of the Program Architecture Support System.

[CNWRA may amplify, as necessary]

EVALUATION FINDING

Staff judgment which reflects the merits of the Applicant's information to address the ELEMENTS OF PROOF, and thus, the REGULATORY REQUIREMENT. EVALUATION FINDINGS are included in the Safety Evaluation Report prepared by the staff and submitted to the Licensing Board.

[CNWRA may amplify, as necessary]

UNCERTAINTY REDUCTION METHOD

How the TECHNICAL, REGULATORY, or INSTITUTIONAL UNCERTAINTY will be reduced.

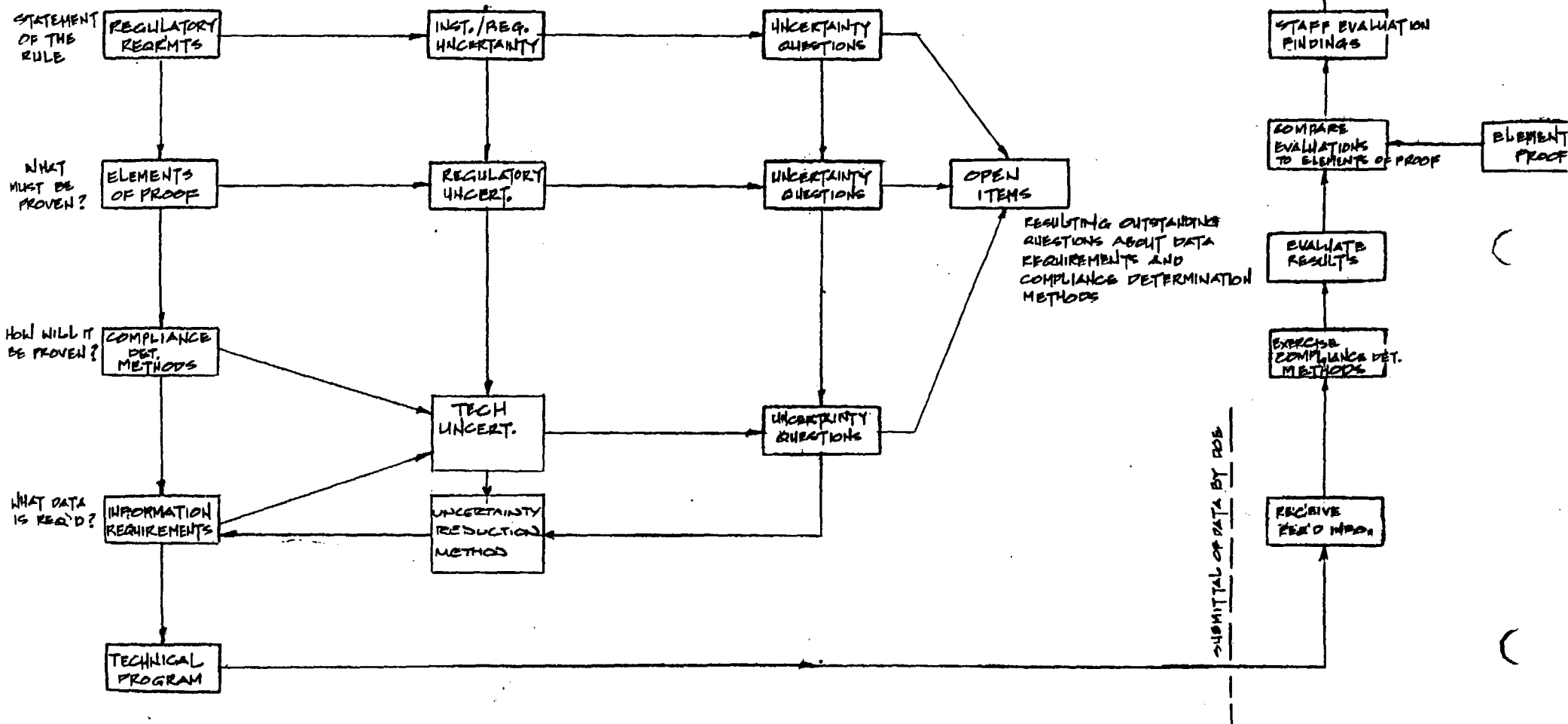
[CNWRA may amplify, as necessary]

## DISTRIBUTION

Central Files  
RBrowning, HLWM  
JLinehan, HLOB  
BStiltenpole, HLSE  
PJustus, HLTR  
JCook, SGTR  
MMace, ARM/CNB1

HLSE R/F  
JYoungblood, HLWM  
RBallard, HLTR  
MDelligatti, HLSE  
JPearring, HLTR  
FCostanzi, RES  
WOTT, RES

NMSS R/F  
JBunting, HLSE  
SFortuna, HLSE  
PAItomare, HLSE  
SCoplan, HLOB  
NMSS Director's R/F



LOGIC DIAGRAM FOR  
PROGRAM ARCHITECTURE TERMINOLOGY

JUNE 16, 1988

NOTE: THERE IS POTENTIAL FOR UNCERTAINTIES TO BE DERIVED AT ANY BLOCK IN THE PROCESS. THOSE UNCERTAINTIES MAY OR MAY NOT IMPACT THE TECHNICAL PROGRAM.