

**MANUAL HARD COPY DISTRIBUTION  
DOCUMENT TRANSMITTAL 2003-29546**

---

**USER INFORMATION:**

---

Name: ~~GERLACH\*ROSE M~~      EMPL#: 28401      CA#: 0363  
Address: ~~NUCSA2~~  
Phone#: ~~254-3194~~

**TRANSMITTAL INFORMATION:**

---

TO: ~~GERLACH\*ROSE M~~      06/24/2003  
LOCATION: DOCUMENT CONTROL DESK  
FROM: NUCLEAR RECORDS DOCUMENT CONTROL CENTER (NUCSA-2)  
THE FOLLOWING CHANGES HAVE OCCURRED TO THE HARDCOPY OR ELECTRONIC MANUAL ASSIGNED TO YOU:

116 - 116 - ADMINISTRATIVE (ADMIN) COORDINATOR: EMERGENCY PLAN-POSITION SPECIFIC PROCEDURE

REMOVE MANUAL TABLE OF CONTENTS      DATE: 04/16/2003

ADD      MANUAL TABLE OF CONTENTS      DATE: 06/23/2003

CATEGORY: PROCEDURES      TYPE: EP

ID: EP-PS-116

REPLACE:      REV:13

REPLACE:      REV:13

REMOVE: PCAF 2002-1389 REV: N/A

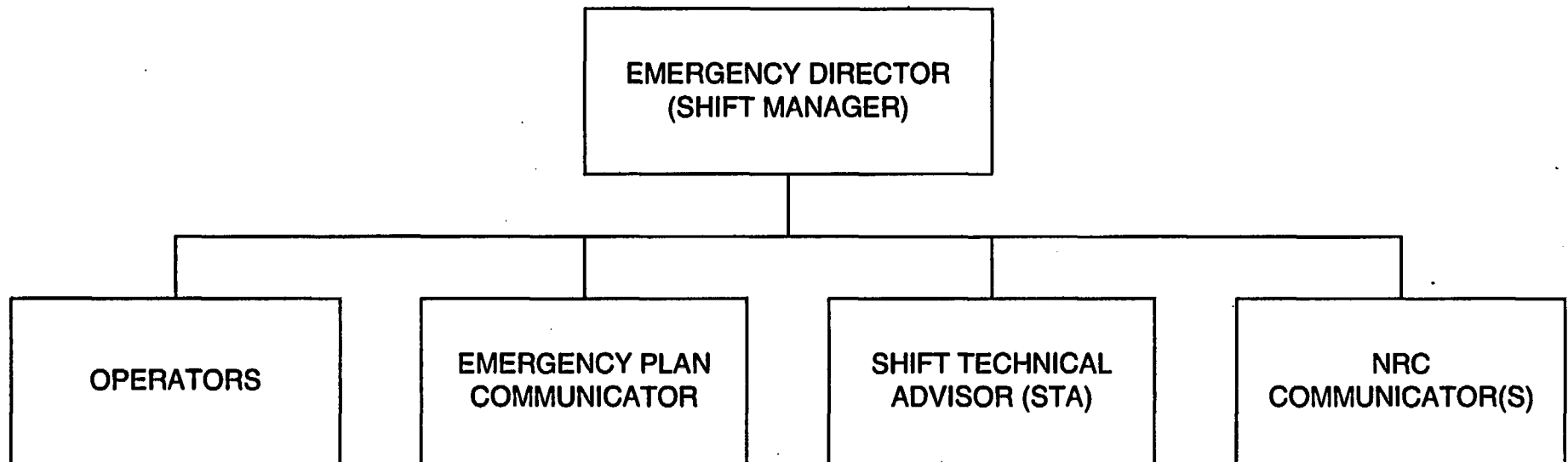
ADD: PCAF 2002-1389 REV: N/A

UPDATES FOR HARD COPY MANUALS WILL BE DISTRIBUTED WITHIN 5 DAYS IN ACCORDANCE WITH DEPARTMENT PROCEDURES. PLEASE MAKE ALL CHANGES AND ACKNOWLEDGE COMPLETE IN YOUR NIMS INBOX UPON RECEIPT OF HARD COPY. FOR ELECTRONIC MANUAL USERS, ELECTRONICALLY REVIEW THE APPROPRIATE DOCUMENTS AND ACKNOWLEDGE COMPLETE IN YOUR NIMS INBOX.

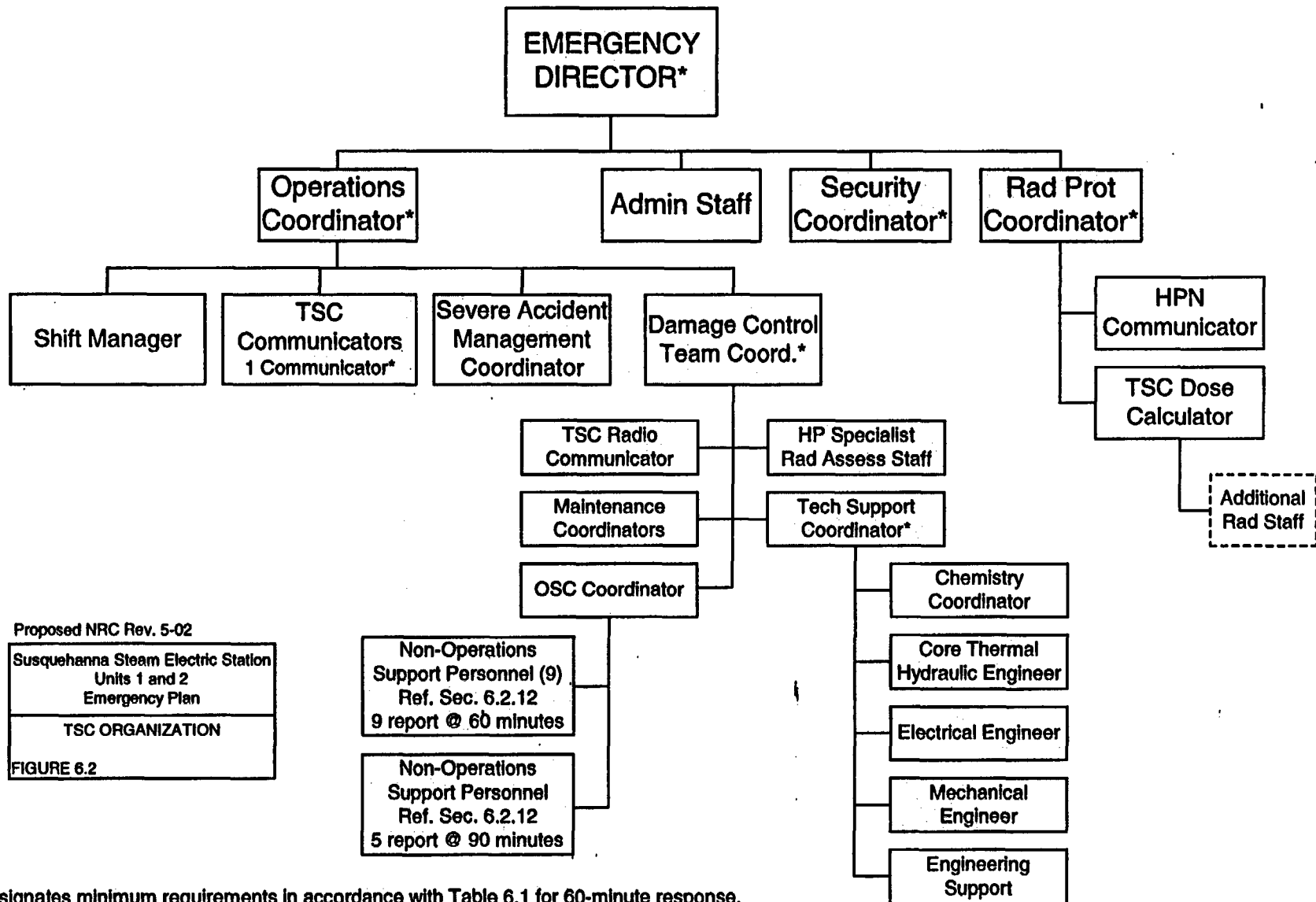
AD45

**EMERGENCY ORGANIZATION  
CONTROL ROOM**

---



## TSC ORGANIZATION



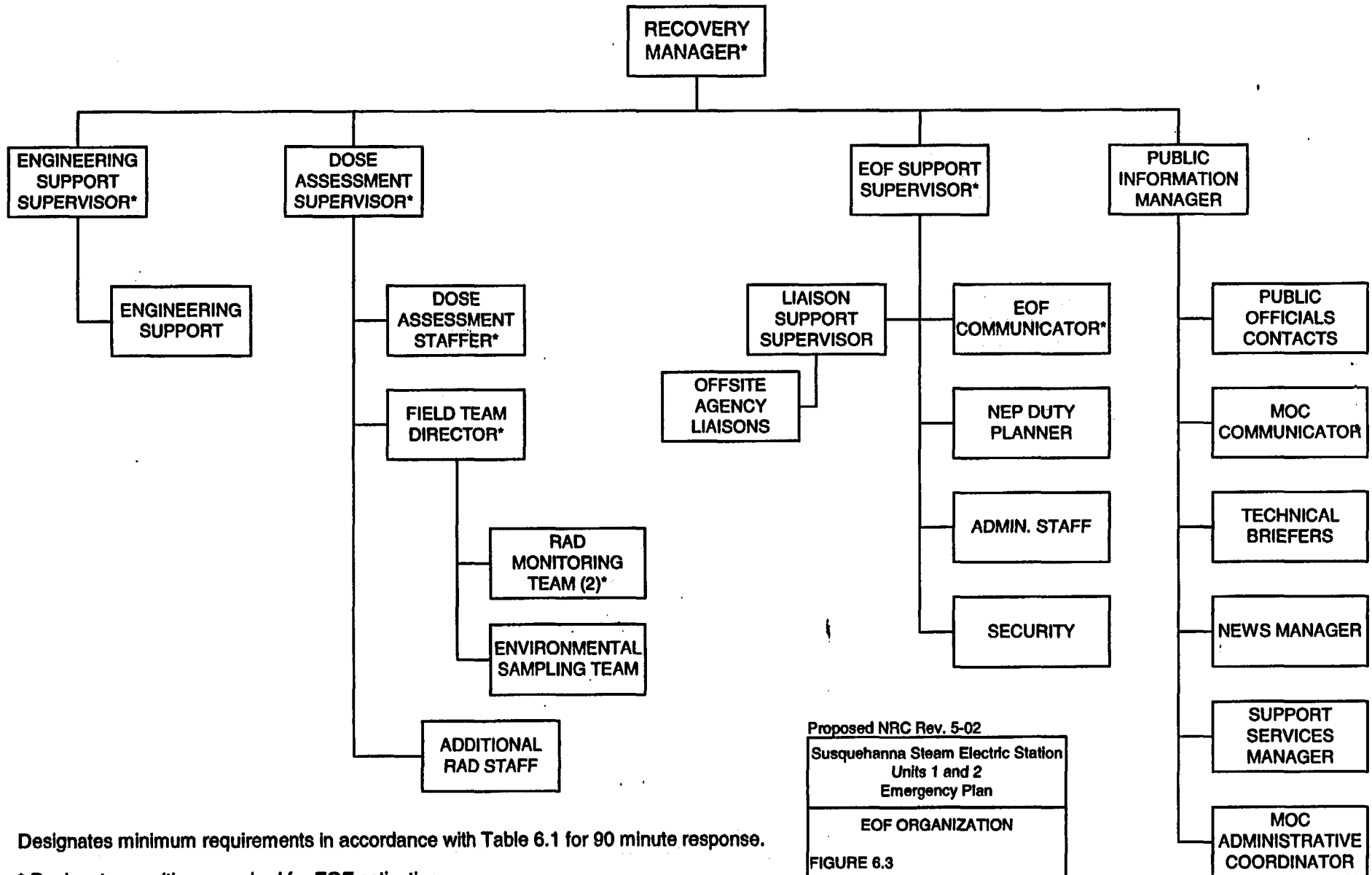
Proposed NRC Rev. 5-02  
Susquehanna Steam Electric Station  
Units 1 and 2  
Emergency Plan  
TSC ORGANIZATION  
FIGURE 6.2

Designates minimum requirements in accordance with Table 6.1 for 60-minute response.

----- Individuals may be located in the OSC, TSC, or Field.

\* Designates positions required for TSC activation.

# EOF ORGANIZATION



Proposed NRC Rev. 5-02  
Susquehanna Steam Electric Station  
Units 1 and 2  
Emergency Plan  
EOF ORGANIZATION  
FIGURE 6.3

Designates minimum requirements in accordance with Table 6.1 for 90 minute response.

\* Designates positions required for EOF activation.