

MANUAL HARD COPY DISTRIBUTION
DOCUMENT TRANSMITTAL 2003-29593

~~USER INFORMATION:~~~~Name: GERBACH*BOSE M EMPL#: 28401 CA#: 0363~~~~Address: NUCSA2~~~~Phone#: 254-3194~~

TRANSMITTAL INFORMATION:

TO: ~~GERBACH*BOSE M~~ 06/24/2003

LOCATION: DOCUMENT CONTROL DESK

FROM: NUCLEAR RECORDS DOCUMENT CONTROL CENTER (NUCSA-2)

THE FOLLOWING CHANGES HAVE OCCURRED TO THE HARDCOPY OR ELECTRONIC MANUAL ASSIGNED TO YOU:

225 - 225 - ADMINISTRATIVE (ADMIN) SUPPORT MANAGER: EMERGENCY PLAN-POSITION
SPECIFIC PROCEDURE

REMOVE MANUAL TABLE OF CONTENTS DATE: 04/16/2003

ADD MANUAL TABLE OF CONTENTS DATE: 06/23/2003

CATEGORY: PROCEDURES TYPE: EP

ID: EP-PS-225

REPLACE: REV:13

REPLACE: REV:13

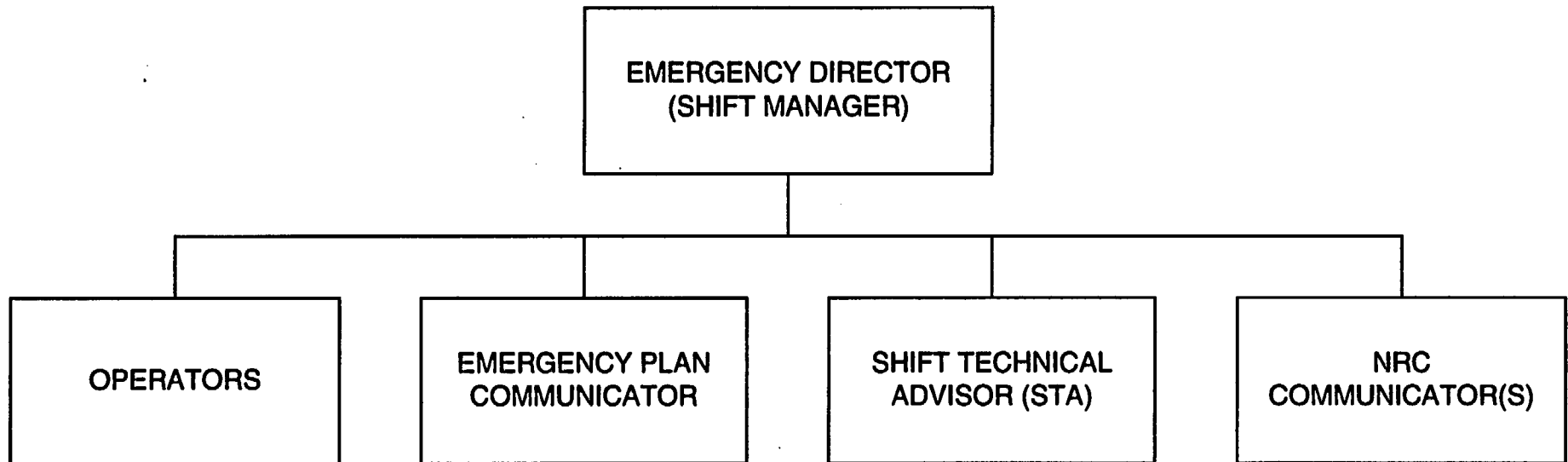
REMOVE: PCAF 2002-1107 REV: N/A

ADD: PCAF 2002-1107 REV: N/A

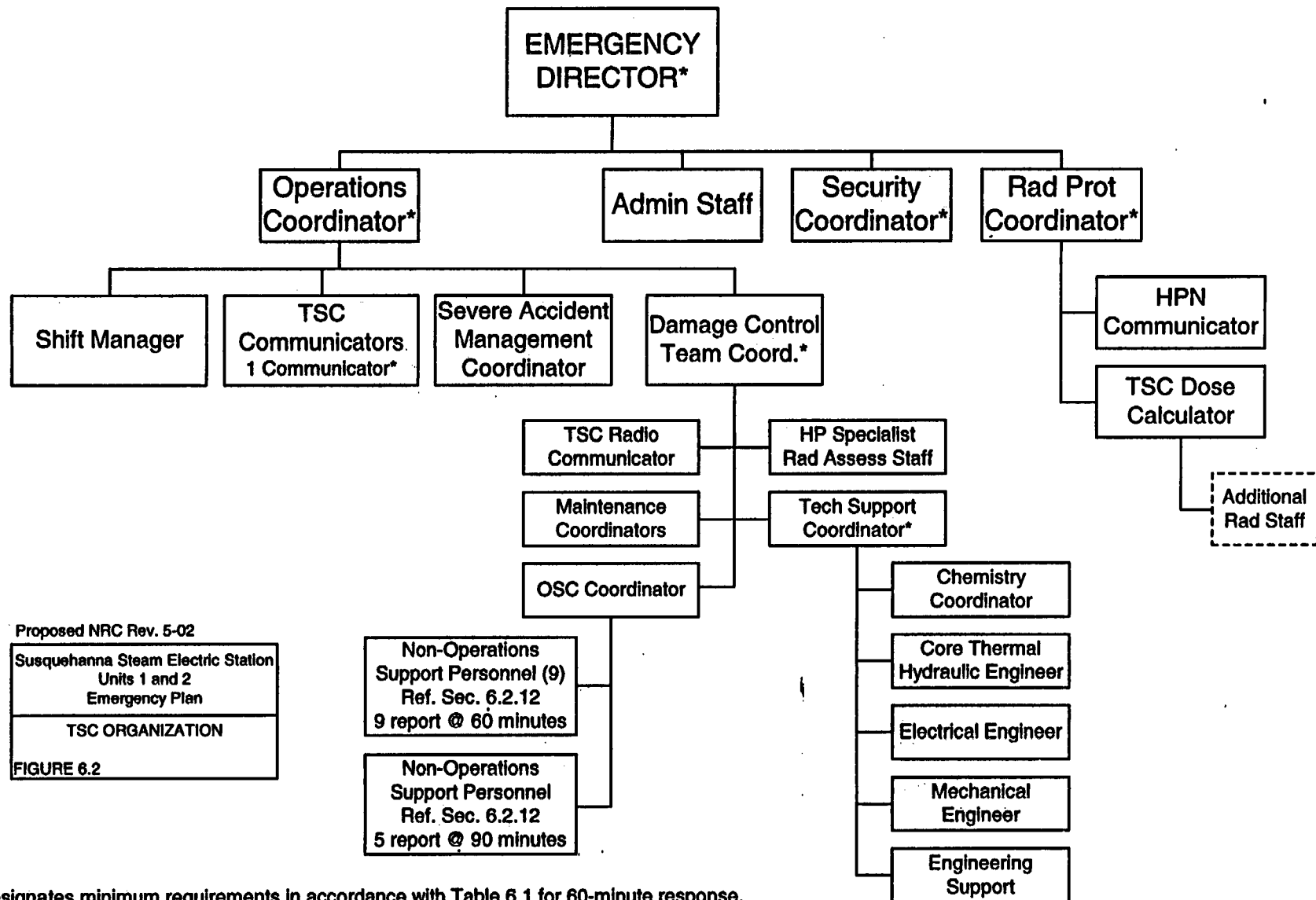
UPDATES FOR HARD COPY MANUALS WILL BE DISTRIBUTED WITHIN 5 DAYS IN ACCORDANCE WITH DEPARTMENT PROCEDURES. PLEASE MAKE ALL CHANGES AND ACKNOWLEDGE COMPLETE IN YOUR NIMS INBOX UPON RECEIPT OF HARD COPY. FOR ELECTRONIC MANUAL USERS, ELECTRONICALLY REVIEW THE APPROPRIATE DOCUMENTS AND ACKNOWLEDGE COMPLETE IN YOUR NIMS INBOX.

A045

**EMERGENCY ORGANIZATION
CONTROL ROOM**



TSC ORGANIZATION



Proposed NRC Rev. 5-02

Susquehanna Steam Electric Station
Units 1 and 2
Emergency Plan

TSC ORGANIZATION

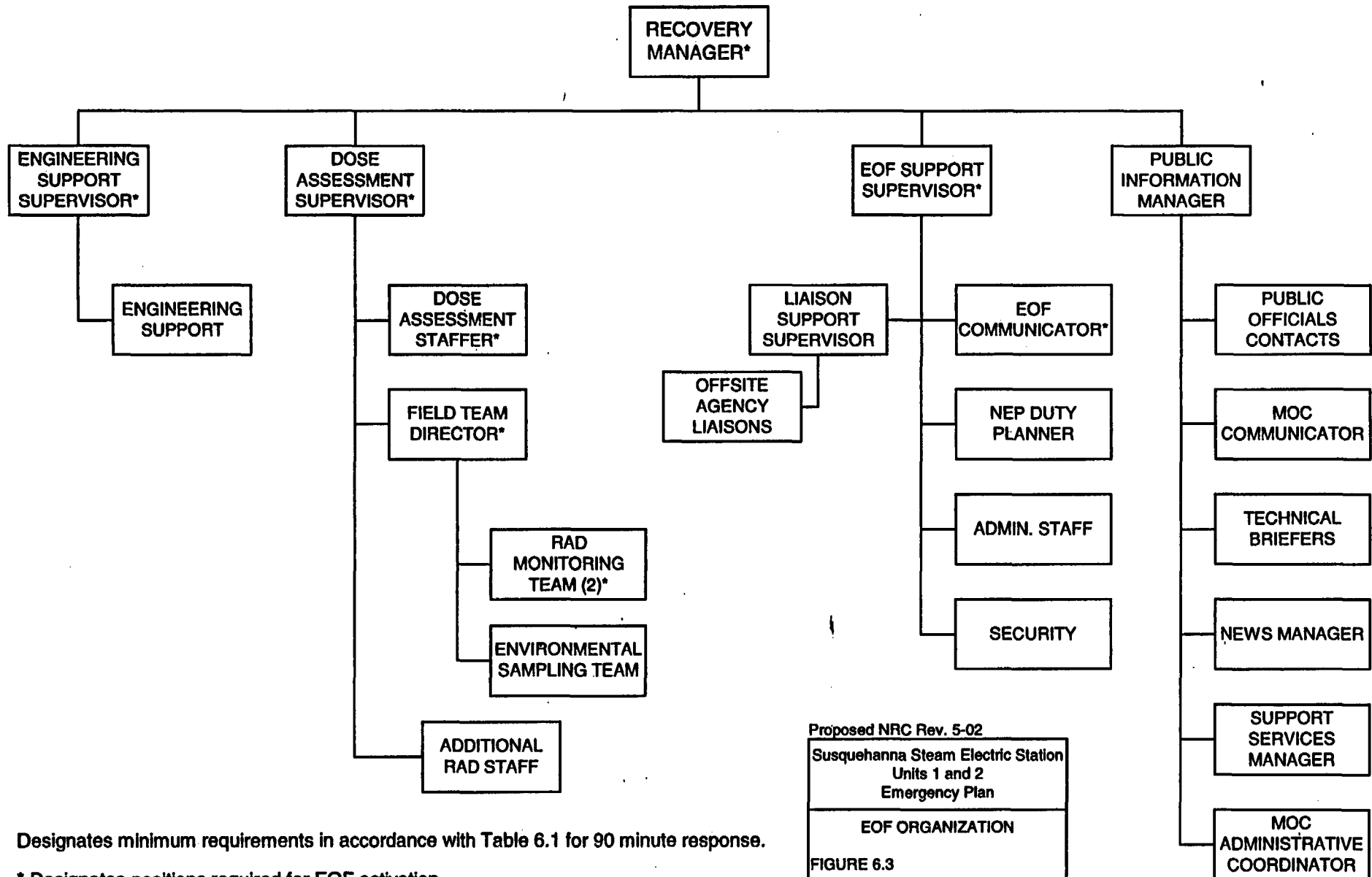
FIGURE 6.2

Designates minimum requirements in accordance with Table 6.1 for 60-minute response.

----- Individuals may be located in the OSC, TSC, or Field.

* Designates positions required for TSC activation.

EOF ORGANIZATION



Designates minimum requirements in accordance with Table 6.1 for 90 minute response.

* Designates positions required for EOF activation.

NOTIFICATION MATRIX EMERGENCY OPERATIONS FACILITY COMMUNICATOR

STATIC UPDATE

Check ☒

- ☐ 1. Emergency Agencies
(PEMA, LCEMA, CCDPS, and
the MOC Communicator)

Use the 4xxx extension and dial "191" to access the conference line. Transmit the Emergency Notification Report every hour on the ½ hour. (Example: 0630, 0730, 0830, etc.).

NOTE: If the MOC Communicator does not answer immediately, do not wait, transmit your message to the Emergency Agencies.

BACKUP TELEPHONE NUMBERS

If calling from a 4xxx extension, dial the backup numbers as follows:

PEMA: 4960, 4961 or 8-1-717-651-2001
LCEMA: 4906, 4907, 4908, or 8-1-800-821-3715
CCDPS: 4955, 4956, or 8-1-570-389-5720

If calling from a non-4xxx extension, dial the backup numbers as follows:

PEMA: 8-353-4960, 8-353-4961, or
8-1-717-651-2001
LCEMA: 8-353-4906, 8-353-4907, 8-353-4908, or
8-1-800-821-3715
CCDPS: 8-353-4955, 8-353-4956, or
8-1-570-389-5734

- ☐ 2. Nuclear Regulatory
Commission (NRC)

Use the ENS telephone to transmit:

- Protective Action Recommendation Form, when required, every 30 min.
- Emergency Notification Report every 60 minutes.

1-301-816-5100
1-301-951-0550 (Backup)
1-301-415-0550 (Backup)

NOTIFICATION MATRIX
EMERGENCY OPERATIONS FACILITY COMMUNICATOR
UPGRADE/DOWNGRADE

Check ☒

- ☐ 1. Emergency Agencies
(PEMA, LCEMA, CCDPS, and
the MOC Communicator)

Within 15 minutes, use the 4xxx extension and dial "191" to access the conference line. Transmit the Emergency Notification Report.

NOTE: If the MOC Communicator does not answer immediately, do not wait, transmit your message to the Emergency Agencies.

NOTE: When site evacuation of non-essential personnel is directed, notify Emergency Agencies (use "191" conference on 4xxx extension).

BACKUP TELEPHONE NUMBERS

If calling from a 4xxx extension, dial the backup numbers as follows:

PEMA: 4960, 4961 or 8-1-717-651-2001
LCEMA: 4906, 4907, 4908, or 8-1-800-821-3715
CCDPS: 4955, 4956, or 8-1-570-389-5720

If calling from a non-4xxx extension, dial the backup numbers as follows:

PEMA: 8-353-4960, 8-353-4961, or
8-1-717-651-2001
LCEMA: 8-353-4906, 8-353-4907, 8-353-4908, or
8-1-800-821-3715
CCDPS: 8-353-4955, 8-353-4956, or
8-1-570-389-5734

- ☐ 2. Transmission Control Center

Dial 8-1-484-634-4090

NOTIFICATION MATRIX
EMERGENCY OPERATIONS FACILITY COMMUNICATOR
UPGRADE/DOWNGRADE

Check ☒

☐ 3. NRC*

Use the ENS telephone to transmit:

- Protective Action Recommendation Form, when required, every 30 min.
- Emergency Notification Report every 60 minutes.

1-301-816-5100

1-301-951-0550 (Backup)

1-301-415-0550 (Backup)

☐ 4. INPO

Within two hours, dial 8-1-800-321-0614 and give classification.

☐ 5. ANI

Within two hours, dial 8-1-860-561-3433 and give classification.

☐ 6. PPL Insurance Group

J. Diacogiannis
220-4961 (W) or 610-865-4410 (H)

T. Novatnack
220-4962 (W) or 610-867-7296 (H)

☐ 7. Pennsylvania Rural Electric Assn.

717-233-5704

☐ 8. General Electric Company (NEBO)

408-971-1038

* The licensee shall notify the NRC immediately after notification of the appropriate state or local agencies not later than one hour after the time the licensee declares one of the Emergency Classifications (10CFR50.72).

NOTIFICATION MATRIX EMERGENCY OPERATIONS FACILITY COMMUNICATOR

TERMINATION

Check ☒

- ☐ 1. Emergency Agencies
(PEMA, LCEMA, CCDPS, and
the MOC Communicator)

Use the 4xxx extension and dial "191" to access the conference line, "The EMERGENCY has been terminated."

NOTE: If the MOC Communicator does not answer immediately, do not wait, transmit your message to the Emergency Agencies.

BACKUP TELEPHONE NUMBERS

If calling from a 4xxx extension, dial the backup numbers as follows:

PEMA: 4960, 4961 or 8-1-717-651-2001
LCEMA: 4906, 4907, 4908, or 8-1-800-821-3715
CCDPS: 4955, 4956, or 8-1-570-389-5720

If calling from a non-4xxx extension, dial the backup numbers as follows:

PEMA: 8-353-4960, 8-353-4961, or
8-1-717-651-2001
LCEMA: 8-353-4906, 8-353-4907, 8-353-4908, or
8-1-800-821-3715
CCDPS: 8-353-4955, 8-353-4956, or
8-1-570-389-5734

- ☐ 2. Transmission Control Center

Dial 8-1-484-634-4090, "The EMERGENCY has been terminated."

- ☐ 3. NRC

Use the ENS telephone line, "The EMERGENCY has been terminated."

1-301-816-5100
1-301-951-0550 (Backup)
1-301-415-0550 (Backup)

**NOTIFICATION MATRIX
EMERGENCY OPERATIONS FACILITY COMMUNICATOR**

TERMINATION

Check ☒

- | | |
|---|--|
| <input type="checkbox"/> 4. INPO | Dial 8-1-800-321-0614, "The EMERGENCY has been terminated." |
| <input type="checkbox"/> 5. ANI | Dial 8-1-860-561-3433, "The EMERGENCY has been terminated." |
| <input type="checkbox"/> 6. PPL Insurance Group | J. Diacogiannis
220-4961 (W) or 610-865-4410 (H).

T. Novatnack
220-4962 (W) or 610-867-7296 (H) |
| <input type="checkbox"/> 7. Pennsylvania Rural Electric Assn. | 717-233-5704 |
| <input type="checkbox"/> 8. General Electric Company (NEBO) | 408-971-1038 |

**NOTIFICATION MATRIX
EMERGENCY OPERATIONS FACILITY COMMUNICATOR
INFORMATION SYSTEMS PERSONNEL**

Contact any one of the following personnel:

<u>NAME</u>	<u>HOME PHONE No.</u>	<u>CELL PHONE No.</u>
Ed Figard	570-784-3126	610-392-5431
Walt Skawski	570-788-5733	570-594-5616
Sharad Shah	570-678-7971	570-594-4883