

MANUAL HARD COPY DISTRIBUTION
DOCUMENT TRANSMITTAL 2003-29430

USER INFORMATION:

Name: ~~GERBACH ROSE M~~ EMPL#: 28401 CA#: 0363
Address: NUCSA2
Phone#: 254-3194

TRANSMITTAL INFORMATION:

TO: ~~GERBACH ROSE M~~ 06/24/2003
LOCATION: DOCUMENT CONTROL DESK
FROM: NUCLEAR RECORDS DOCUMENT CONTROL CENTER (NUCSA-2)
THE FOLLOWING CHANGES HAVE OCCURRED TO THE HARDCOPY OR ELECTRONIC MANUAL ASSIGNED TO YOU:

113 - 113 - SECURITY COORDINATOR: EMERGENCY PLAN-POSITION SPECIFIC PROCEDURE

REMOVE MANUAL TABLE OF CONTENTS DATE: 06/09/2003

ADD MANUAL TABLE OF CONTENTS DATE: 06/23/2003

CATEGORY: PROCEDURES TYPE: EP

ID: EP-PS-113

REPLACE: REV:8

REPLACE: REV:8

REMOVE: PCAF 2002-1242 REV: N/A

REMOVE: PCAF 2002-1563 REV: N/A

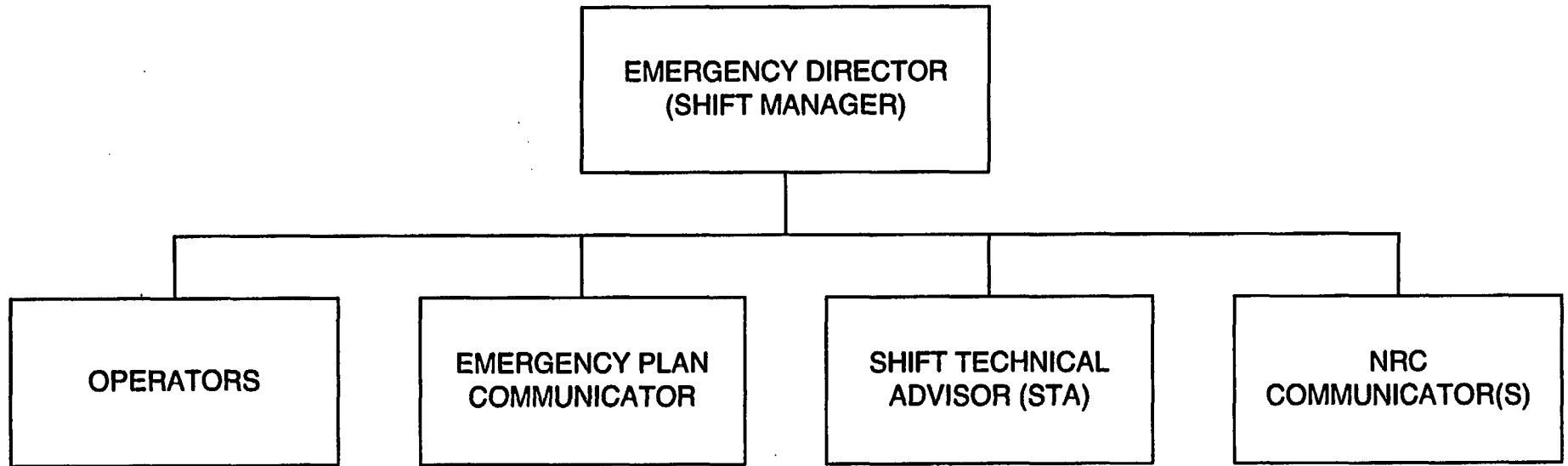
ADD: PCAF 2002-1242 REV: N/A

ADD: PCAF 2002-1563 REV: N/A

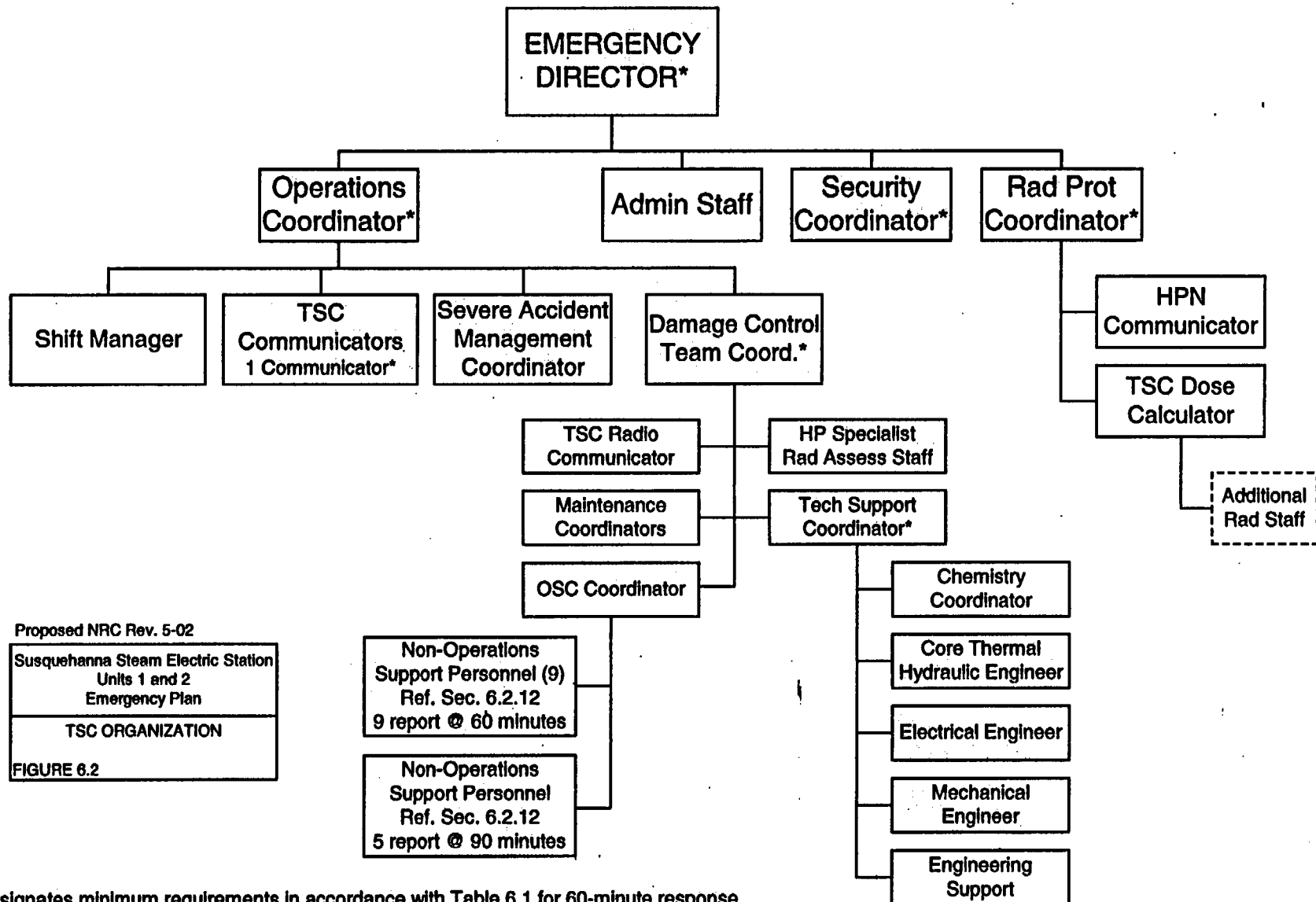
UPDATES FOR HARD COPY MANUALS WILL BE DISTRIBUTED WITHIN 5 DAYS IN ACCORDANCE WITH DEPARTMENT PROCEDURES. PLEASE MAKE ALL CHANGES AND ACKNOWLEDGE COMPLETE IN YOUR NIMS INBOX UPON RECEIPT OF HARD COPY. FOR ELECTRONIC MANUAL USERS, ELECTRONICALLY REVIEW THE APPROPRIATE DOCUMENTS AND ACKNOWLEDGE COMPLETE IN YOUR NIMS INBOX.

A045

**EMERGENCY ORGANIZATION
CONTROL ROOM**



TSC ORGANIZATION



Proposed NRC Rev. 5-02

Susquehanna Steam Electric Station
Units 1 and 2
Emergency Plan

TSC ORGANIZATION

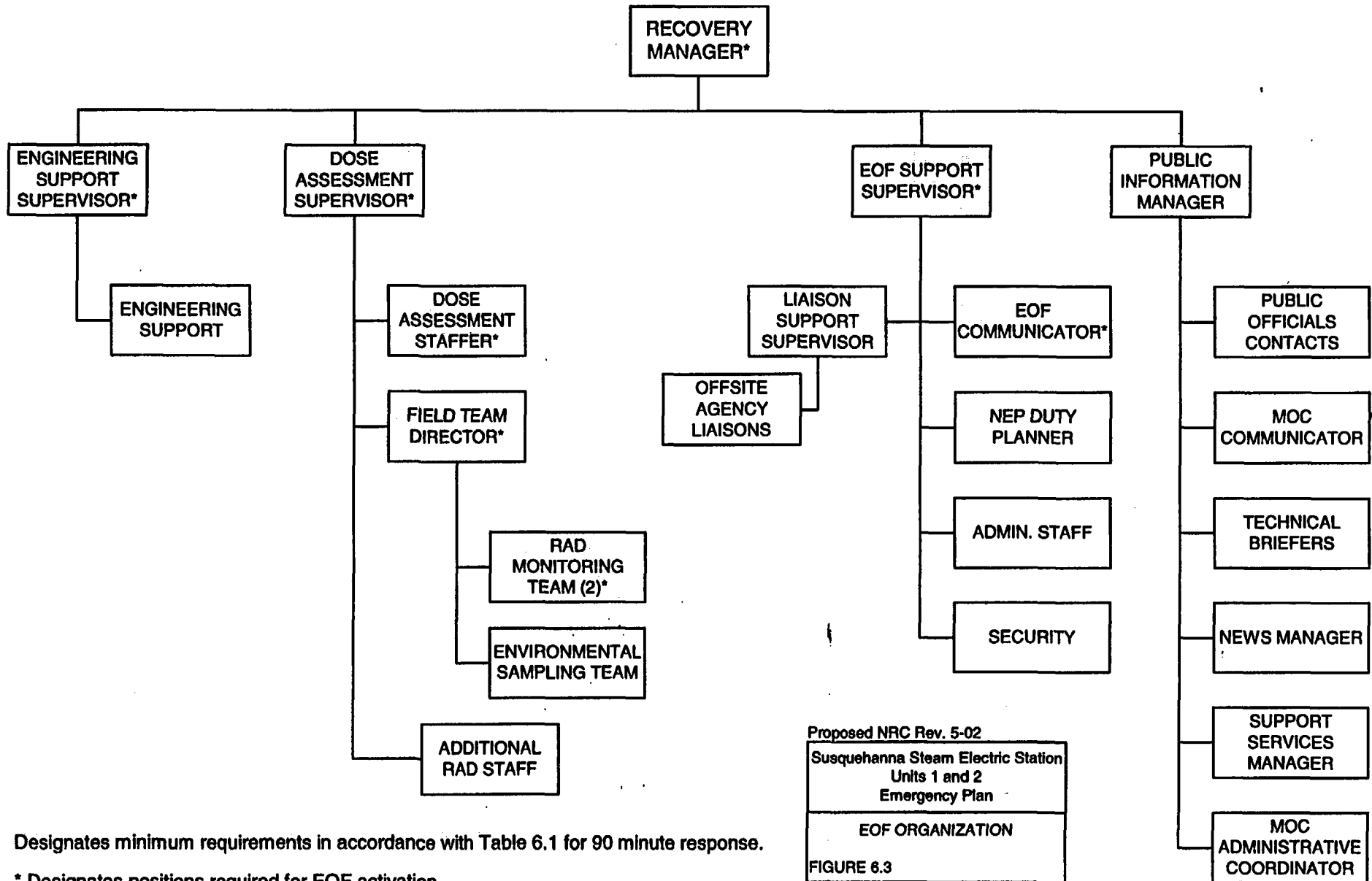
FIGURE 6.2

Designates minimum requirements in accordance with Table 6.1 for 60-minute response.

----- Individuals may be located in the OSC, TSC, or Field.

* Designates positions required for TSC activation.

EOF ORGANIZATION



Proposed NRC Rev. 5-02
Susquehanna Steam Electric Station
Units 1 and 2
Emergency Plan
EOF ORGANIZATION
FIGURE 6.3

Designates minimum requirements in accordance with Table 6.1 for 90 minute response.

* Designates positions required for EOF activation.