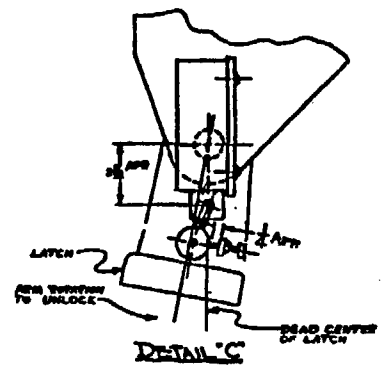
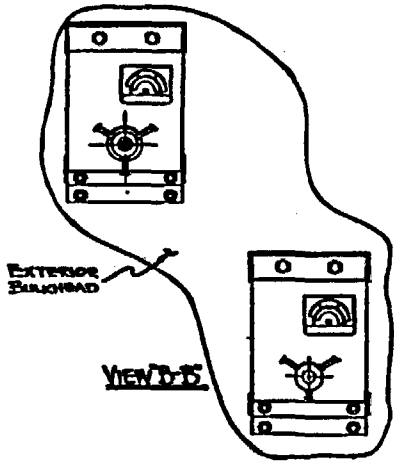
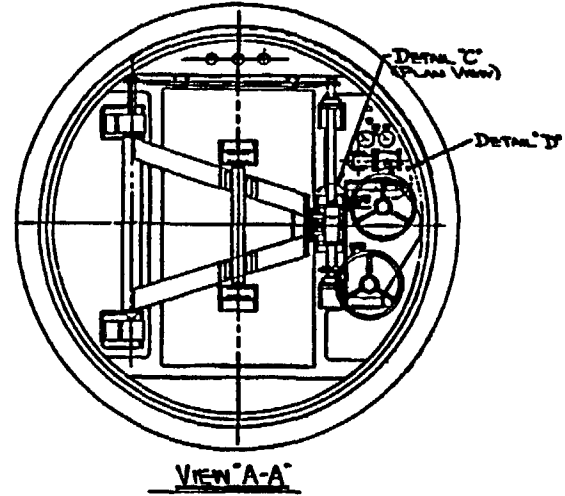


SECTIONAL ELEVATION.



REVISION 17
OCTOBER 18 1998

<p>PUBLIC SERVICE ELECTRIC AND GAS COMPANY SALEM NUCLEAR GENERATING STATION</p>	<p>PERSONNEL LOCK</p> <p>Updated FSAR FIG. 3.8-38</p>
---	--

A/3