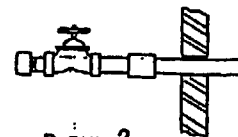
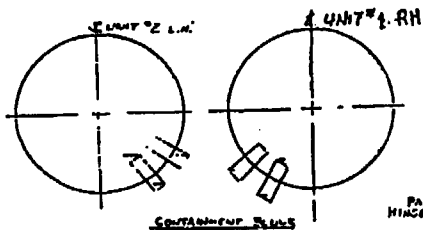


DETAIL A

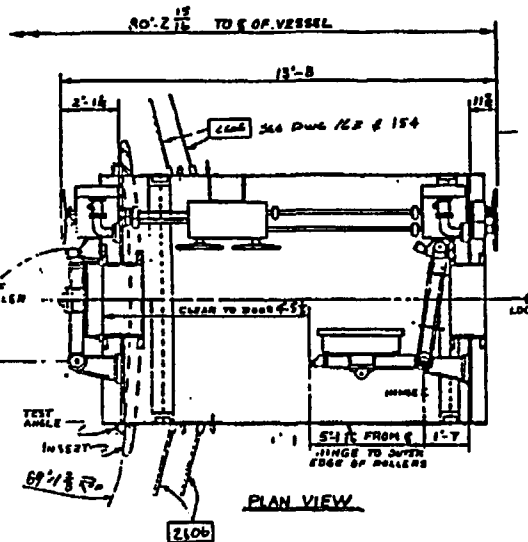


DETAIL 2

NO.	DESCRIPTION	QTY	NOTE
154	STRUCTURAL ASSY		
155	INTERIOR DOOR ASSY		
156	EXTERIOR DOOR ASSY		
107	INTERIOR DOOR ASSY		
108	EXTERIOR DOOR ASSY		
109	FLOOR ASSY		
111	TIE DOWN ASSY		
116	INSERT ASSY		
129	PRESSURE EQUALIZING ASSY		
161	MANIFOLD ASSY		
162	PT. 5. LUGS LOCATIONS		
168	Details of Cont. Manifold Assy		



**NDT DESIGNATIONS**  
 PT - Live Test/Pressure Testing  
 UT - Ultrasonic Testing  
 RT - Radiographic Testing  
 MT - Magnetic Particle Testing



PLAN VIEW

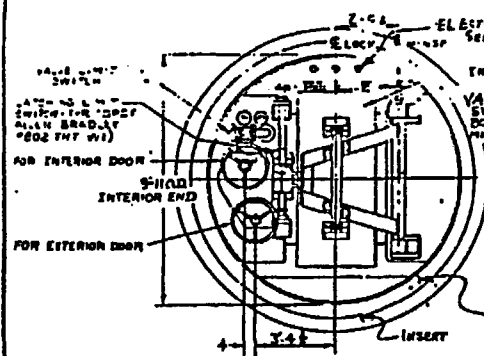
**GENERAL NOTE:**

THE LOCKING MECHANISM IS DESIGNED TO SEAL THE DOOR AGAINST A PRESSURE OF 3 PSIG. THE DOORS AND LOCK ARE DESIGNED FOR A PRESSURE OF 54 PSIG EXISTING IN THE CONTAINMENT VESSEL OR THE CONTAINMENT VESSEL AND LOCK SIMULTANEOUSLY. BOTH DOORS AND VALVES CAN BE MANUALLY OPERATED FROM EITHER SIDE OF EITHER DOOR AND ARE MECHANICALLY INTERLOCKED TO PREVENT OPENING BOTH DOORS AND VALVES AT THE SAME TIME. THE DOOR AND VALVE CANNOT BE OPENED UNLESS THE OPPOSITE DOOR AND VALVE IS SEALED. THE OPERATING AND MAINTENANCE MANUALS DESCRIBE THE METHOD OF DELIBERATELY VIOLATING THE INTERLOCK.

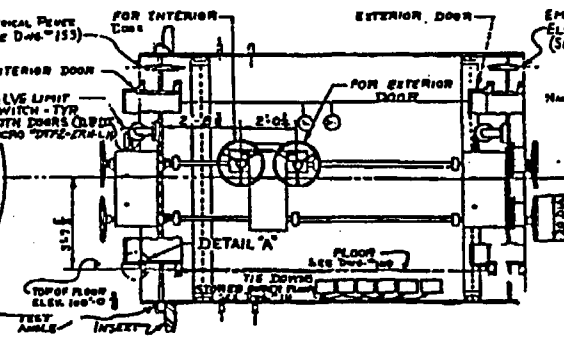
THE OPERATION OF THE HANDBELL WILL PERFORM THE FOLLOWING FUNCTION: (1) ACTIVATE THE MECHANICAL INTERLOCK TO BLOCK OPERATION OF THE OPPOSITE MECHANISM, (2) OPERATE THE PRESSURE EQUALIZING VALVE, (3) UNLATCH THE DOOR, (4) SHUT THE DOOR OPEN ON IT'S HINGE. THESE OPERATIONS ARE IN THE SEQUENCE AS DESCRIBED FOR OPENING A DOOR AND ARE REVERSED FOR CLOSING A DOOR. THE REMOTE OPERATOR ON THE OUTSIDE OF THE LOCK AT EACH DOOR WILL PERFORM THE ABOVE FUNCTIONS ON THE OPPOSITE DOOR.

LIMIT SWITCHES ARE SUPPLIED AT THE VALVE AND LATCH OPERATORS FOR EACH DOOR TO FACILITATE REMOTE INDICATION OF EACH DOOR AND VALVE POSITION. POSITION INDICATORS AT EACH HANDBELL DENOTE THE POSITION OF ITS RELATED VALVE, LATCH AND DOOR.

TIE DOORS ARE DESIGNED TO 14" STEEL DOOR FOR LOCK TESTS GREATER THAN 5 PSIG OVER CONTAINMENT PRESSURE (SEE DWG. 111) SEE A TIE GENERAL PLAN FOR ADDITIONAL INFORMATION.

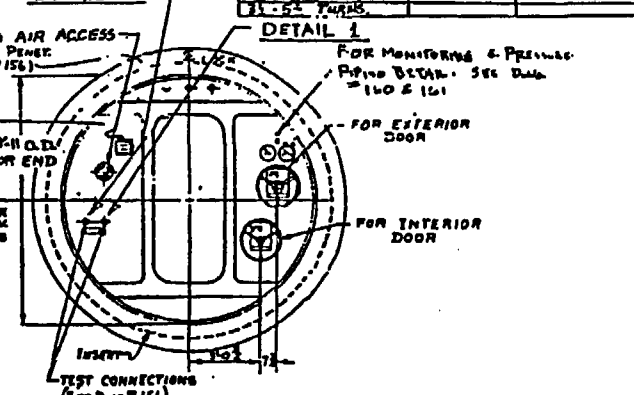


INTERIOR END



ELEVATION VIEW

**DETAIL 2**



EXTERIOR END

MANIPULATION	OPERATION	HANDBELL FORCE
0-15 TURNS	VALVE OPEN	2 LB.
15-35 TURNS		
35-55 TURNS		

**DETAIL 1**

PUBLIC SERVICE ELECTRIC AND GAS COMPANY SALEM NUCLEAR GENERATING STATION	General Arrangement - Personnel Lock	
	Updated FSAR Revision 16	Figure 3.8-38 January 31, 1998

Handwritten mark resembling a stylized 'A' or 'H' with a horizontal line through it.