



UNITED STATES
NUCLEAR REGULATORY COMMISSION
REGION IV
611 RYAN PLAZA DRIVE, SUITE 400
ARLINGTON, TEXAS 76011-4005

APR 18 2003

C. L. Terry, Senior Vice President
and Principal Nuclear Officer
TXU Energy
ATTN: Regulatory Affairs
Comanche Peak Steam Electric Station
P.O. Box 1002
Glen Rose, Texas 76043

SUBJECT: ANNUAL PERFORMANCE ASSESSMENT MEETING FOR COMANCHE PEAK
STEAM ELECTRIC STATION

Dear Mr. Terry:

This refers to the meeting conducted in Glen Rose, Texas, on April 8, 2003. This meeting was to discuss the safety performance at South Texas Project Electric Generating Station from January 1 to December 31, 2002.

Topics discussed during the meeting included a description of the Reactor Oversight Process, the safety performance at the Comanche Peak Steam Electric Station, and other topics that may have been of interest to the local area residents. Members of the public present at the meeting were allowed to ask questions and comment on the proceedings.

In accordance with Section 2.790 of the NRC's "Rules of Practice," Part 2, Title 10, Code of Federal Regulations, a copy of this letter will be placed in the NRC's Public Document Room.

Should you have any questions concerning this matter, we will be pleased to discuss them with you.

Sincerely,

William D. Johnson, Chief
Project Branch A
Division of Reactor Projects

Dockets: 50-445
50-446
Licenses: NPF-87
NPF-89

TXU Energy

-2-

Enclosures:

1. Attendance List
2. Presentation Slides

cc:

Roger D. Walker
Regulatory Affairs Manager
TXU Generation Company LP
P.O. Box 1002
Glen Rose, Texas 76043

George L. Edgar, Esq.
Morgan Lewis
1111 Pennsylvania Avenue, NW
Washington, DC 20004

G. R. Bynog, Program Manager/
Chief Inspector
Texas Department of Licensing & Regulation
Boiler Division
P.O. Box 12157, Capitol Station
Austin, Texas 78711

County Judge
P.O. Box 851
Glen Rose, Texas 76043

Chief, Bureau of Radiation Control
Texas Department of Health
1100 West 49th Street
Austin, Texas 78756-3189

Environmental and Natural
Resources Policy Director
Office of the Governor
P.O. Box 12428
Austin, Texas 78711-3189

Brian Almon
Public Utility Commission
William B. Travis Building
P.O. Box 13326
1701 North Congress Avenue
Austin, Texas 78701-3326

TXU Energy

-3-

Susan M. Jablonski
Office of Permitting, Remediation and Registration
Texas Commission on Environmental Quality
MC-122
P.O. Box 13087
Austin, Texas 78711-3087

Roger Hill
Sheriff, Somervell County
750 E. Gibbs Blvd.
Glen Rose, Texas 76043

Connie Kirk
Mayor of Glen Rose
P.O. Box 87
Glen Rose, Texas 76043

Andy Rash
Hood County Judge
100 E. Pearl Street
Granbury, Texas 76048

David Southern
Mayor of Granbury
P.O. Box 969
Granbury, Texas 76048

Federal Emergency Management Agency
Ron Castleman, Regional Director
Region VI, Federal Center
800 North Loop 288
Denton, Texas 76201-3698

Rebecca Klein, Commissioner
Public Utility Commission
William B. Travis Bldg.
P.O. Box 13326
1701 North Congress Avenue
Austin, Texas 78701-3326

William "Dub" Taylor
State Energy Conservation Office
111 E 17th Street, Room 1114
Austin, Texas 78711

TXU Energy

-4-

Allen Hardin
Sheriff, Hood County
400 N. Gordon Street
Granbury, Texas 76048

Walter Maynard
Somervell County Judge
P.O. Box 851
Glen Rose, Texas 76043

Electronic distribution by RIV:
Regional Administrator (**EWM**)
DRP Director (**ATH**)
DRS Director (**DDC**)
Senior Resident Inspector (**DBA**)
Branch Chief, DRP/A (**WDJ**)
Senior Project Engineer, DRP/A (**CJP**)
Staff Chief, DRP/TSS (**PHH**)
RITS Coordinator (**NBH**)

ADAMS: ☒ Yes ☐ No Initials: cf
☒ Publicly Available ☐ Non-Publicly Available ☐ Sensitive ☒ Non-Sensitive

R:\ CPSES\2003\CP4-8-03 EOC MS.wpd

RIV/SPE/DRP/A	C/DRP/A			
CJPaulk;df	WDJohnson			
<u>cf</u>				
4/18/03	4/18/03			

OFFICIAL RECORD COPY

T=Telephone

E=E-mail

F=Fax

ENCLOSURE 1
ATTENDANCE LIST

NRC Representatives

D. Allen, Senior Reactor Inspector
G. Good, Acting Deputy Director, Division of Reactor Projects
W. Johnson, Chief, Project Branch A
A. Sanchez, Resident Inspector
M. Satorius, Chief, Performance Assessment Section, Office of Nuclear Reactor Regulation

TXU Energy Representatives

S. Alldredge
M. Blevins
M. Bozeman
J. Curtis
A. Cutler
S. Ellis
R. Flores
R. Kidwell
W. Lee
F. Madden
B. Mays
G. Merka
D. Moore
D. Reuter
K. Sanborn
L. Terry
R. Walker

Members of the Public

K. Harding
W. Maynard
A. Rash

ANNUAL ASSESSMENT MEETING



Nuclear Regulatory Commission

Region IV

NRC Meeting Purpose

- **Meeting with Licensee and Public**
- **Inform Public of Plant Performance**



NRC Meeting Guidelines

- **Registration Table**
- **Questions and Answers**
- **Feedback Forms**
- **Handouts**



NRC PERFORMANCE GOALS

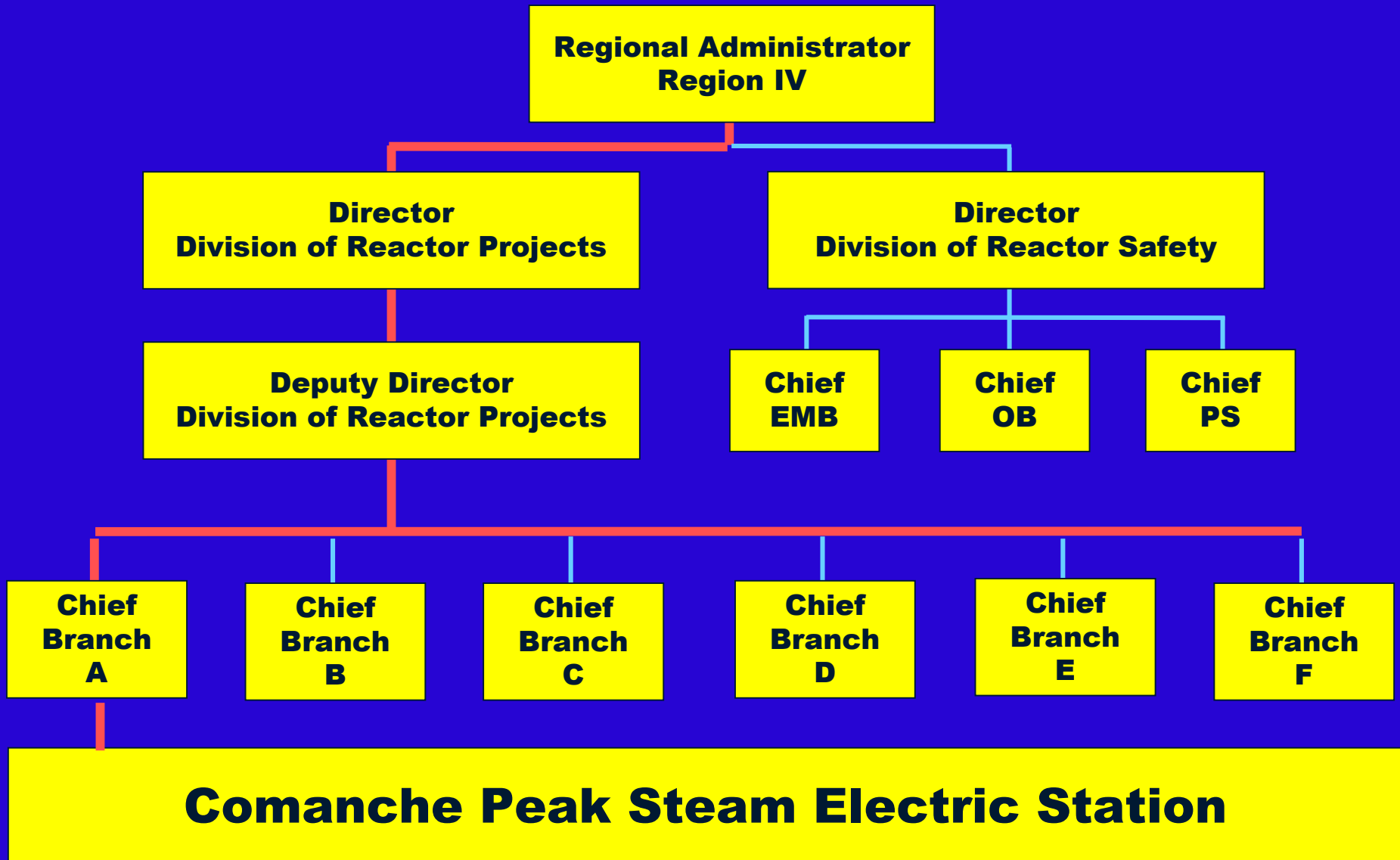
- **Maintain public safety and protect the environment**
- **Enhance public confidence**
- **Improve:**
 - **Effectiveness**
 - **Efficiency**
 - **Realism of processes and decision making**
- **Reduce unnecessary regulatory burden**



Assessment of Safety Performance **at Comanche Peak Steam Electric** **Station**



Regional Organization



Comanche Peak Steam Electric Station

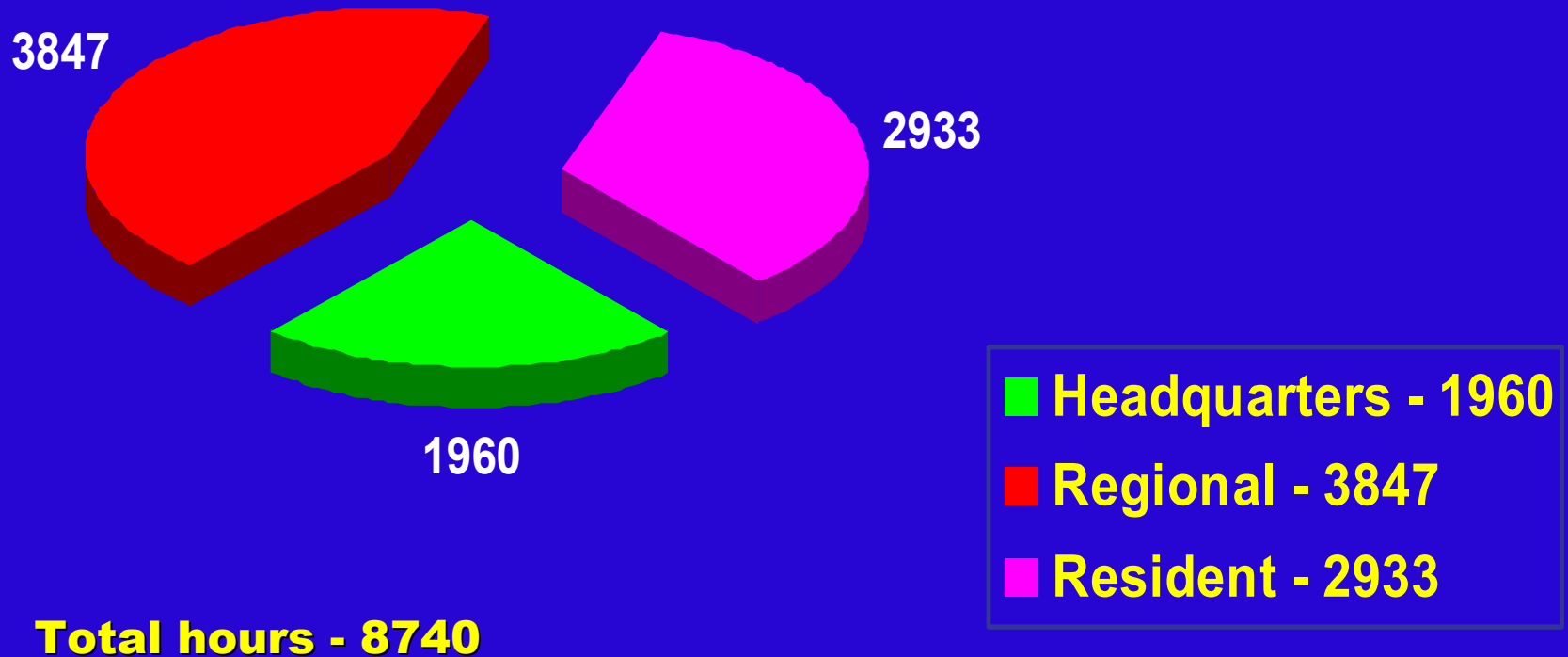


Meeting Agenda

- **REGULATORY OVERSIGHT**
- **FINDINGS AND ASSESSMENTS**
- **ADDITIONAL FOCUS AREAS**
- **QUESTIONS AND ANSWERS**



Overall NRC Effort



Resident Inspectors

- **Stationed at the plant**
- **Prompt response capability**
- **2933 hours of oversight**



Regional Inspectors

- **Specialized**
- **Inspection teams**
- **3847 hours of oversight**



Comprehensive Oversight Program

**NRC'S
Overall
Safety
Mission**

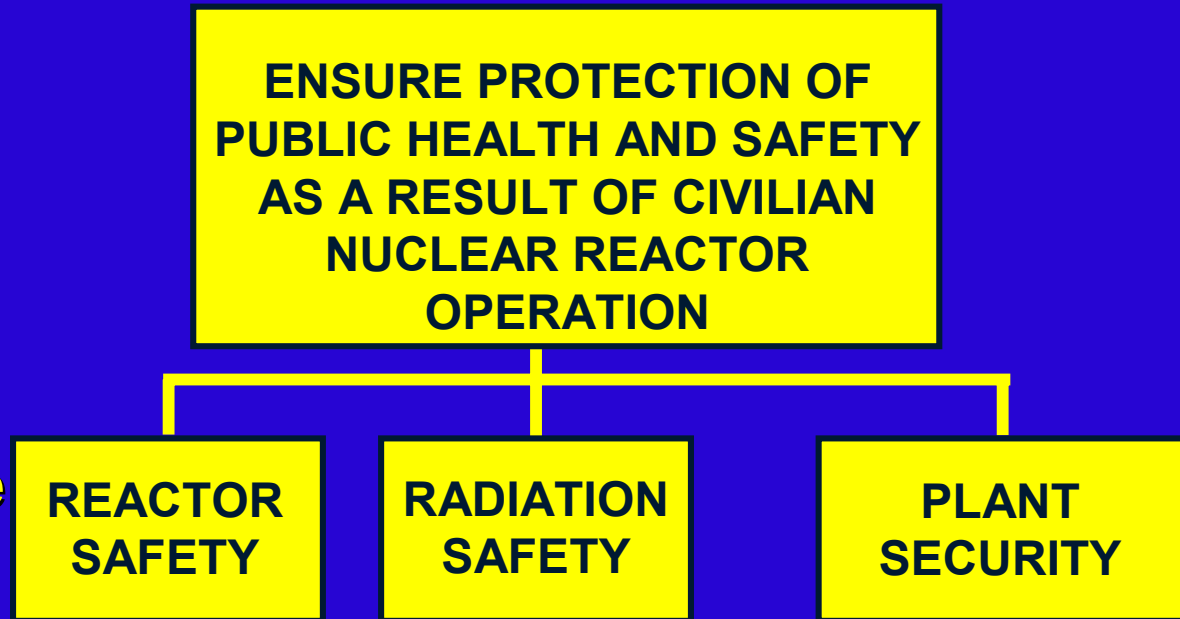
**ENSURE PROTECTION OF
PUBLIC HEALTH AND SAFETY
AS A RESULT OF CIVILIAN
NUCLEAR REACTOR
OPERATION**

**Strategic Performance
Areas**

**REACTOR
SAFETY**

**RADIATION
SAFETY**

**PLANT
SECURITY**

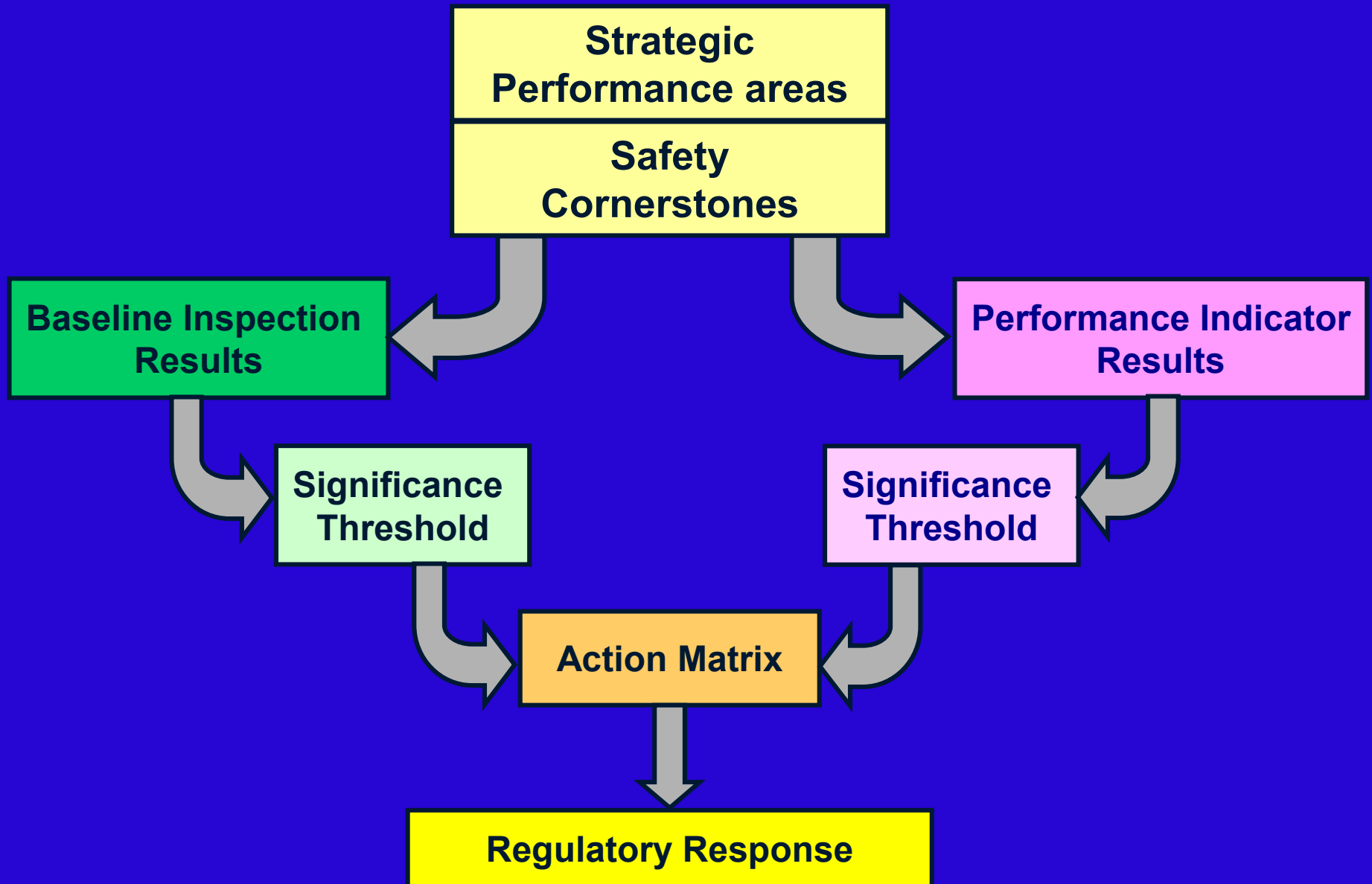


NRC Oversight Activities

- **Provide assurance plants are:**
 - **Operating safely**
 - **Complying with regulations**
- **Based on a logical and sound framework**
- **Inspections focused on key safety areas**
- **Objective indicators of performance**
- **Assessment program triggers regulatory actions**



Reactor Oversight Process



Baseline Inspection Program

- **Gathers objective evidence of plant safety**
- **Conducted at all plants**
- **Focuses on safety-significant:**
 - **systems**
 - **components**
 - **activities**
 - **events**



Baseline Inspection Program

- **Inspection reports describe significant findings and non-compliance**
- **Inspection reports are publicly accessible**

www.nrc.gov/reading-rm/adams.html



Event Follow-up and **Supplemental Inspections**

- **Review events for significance**
- **Follow-up significant inspection findings**
- **Determine causes of performance declines**
- **Provide for graduated response**



Reactor Oversight Process

SAFETY SIGNIFICANCE

GREEN

- very low

WHITE

- low to moderate

YELLOW

- substantial

RED

- high

Performance Indicator **Program**

- **Licensee monitors key safety parameters**
- **Data supplied to NRC quarterly**



Performance Indicators

- **Performance indicator results and other assessment information available on the NRC's public web site:**

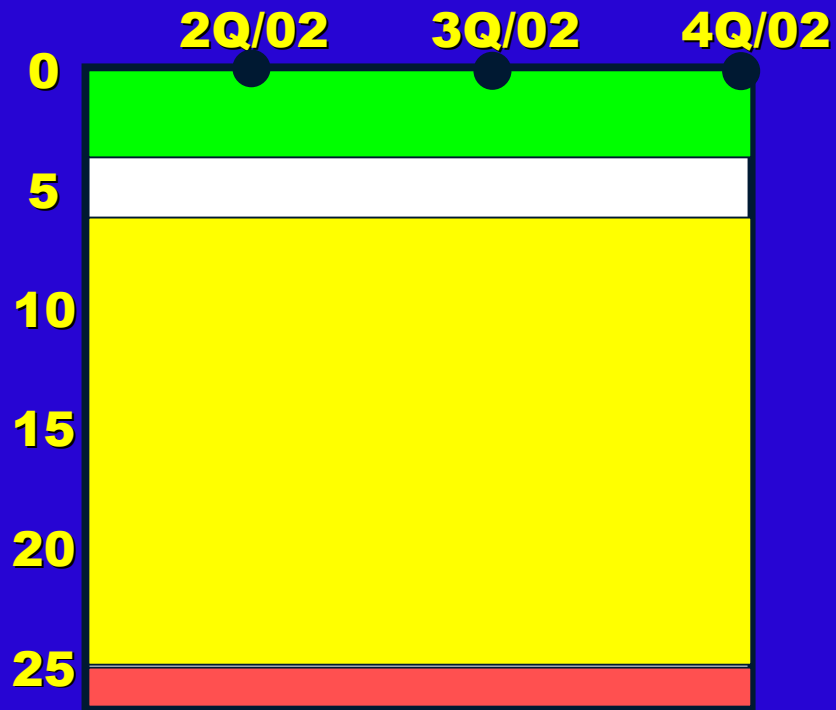
www.nrc.gov/NRR/OVERSIGHT/ASSESS/CP1/cp1_chart.html

www.nrc.gov/NRR/OVERSIGHT/ASSESS/CP2/cp2_chart.html



Performance Indicators

Unplanned Scrams per 7000 critical hours



Thresholds:

White >3.0,

Yellow >6.0,

Red >25.0

Unplanned scrams per 7000 critical hours	2Q/02	3Q/02	4Q/02
Actual scrams	0	0	0
Critical hours	1541.0	2208	2208
Indicator value	0	0	0

Key Aspects of the Assessment Program

- **Objective review of licensee performance**
- **“Action Matrix” to determine agency response in three areas:**
 - **Inspection**
 - **Management Involvement**
 - **Regulatory Actions**
- **Plant specific assessment letters**
- **Information on NRC public web site**



Plant Safety

Performance Summary



Plant Specific Data

Name of Plant: Comanche Peak Steam Electric Station

Plant Operator: TXU

Number of Units: 2

Reactor Type & Vendor: Pressurized Water Reactor/
Westinghouse

Location: Glen Rose, Texas

Power Output (electrical): 1215 Mwe net each

Source of Circulating Water: Reservoir

Major Plant Activities in 2002

**Inspected Reactor Vessel Heads on
Both Units 1 and 2**

Inspection Results

NRC and Licensee identified inspection findings were of very low safety significance

No supplemental inspections were necessary as a result of 2002 inspection findings



Performance Indicator Results

**All performance indicators within
the Licensee Control Band**



ROP Action Matrix Summary for 2002

	Licensee Response	Regulatory Response	Degraded Cornerstone	Multiple/ Repetitive Degraded Cornerstone	Unacceptable Performance
Nationwide	75	24	0	1	0
Region IV	15	5	0	1	0

Assessment Conclusion

Licensee effectively managed:

- Reactor safety**
- Radiation safety**
- Plant security**

**Comanche Peak Steam Electric
Station Station operated in a manner
that protected the health and safety
of the public**



LICENSEE RESPONSE



Additional Focus Areas

- **NRC Responds As-Needed**
- **Mandated Licensee Actions**
- **Implemented Emergency Preparedness**



Nuclear Industry Issues

- **Reactor Vessel Head Penetration Inspection**
- **Security at Nuclear Power Plants**

Post Davis-Besse

Licensee Actions

Visual Inspection of Reactor Vessel Head Penetrations

Non-destructive Examination of Head Penetrations

NRC Actions

Observation of Licensee Inspections and Examinations

Independent Inspection



Security at Nuclear Power Plants

Nuclear Regulatory Commission:

- **Has expanded involvement with FBI, law enforcement and other intelligence agencies**
- **Communicates frequently with Department of Homeland Security, DOD, FAA, FEMA, and others**
- **Continues to work in concert with:**
 - **Licensees**
 - **State and local officials**



Security at Nuclear Power Plants

Threat Advisory and Protective Measures System:

- **communicates threats affecting NRC licensees**
- **corresponds to color-coded Homeland Security Presidential Directive**
- **Identifies specific actions to be taken by NRC licensees for each threat level**



Security at Nuclear Power Plants

- **NRC issued over 30 safeguards & threat advisories**
- **Many of those advisories strengthened security and have been elevated into requirements**
- **Nuclear facilities are far ahead of other industries with regards to the level of security**



Future Outlook

- **Power Uprates**
- **NRC has approved more than 80 applications to increase reactor power**
- **Approximately 51 applications for power uprates expected over next 5 years**



Future Outlook (Cont.)

- **License Renewal**
 - **A recent initiative**
 - **Applications for 14 units have been approved**
 - **16 applications are currently under review**
- **Early Site Permits**
 - **Three applications expected in 2003**



Conclusions

- **Assured Public Safety**
- **Flexible/Predictable Response**
- **Risk-Informed Programs**



Contacting the NRC

- **Report an Emergency:**
(301) 816-5100 (collect)
- **Report a Safety Concern:**
(800) 695-7403 or Allegation@nrc.gov
- **General Information or questions:**
www.nrc.gov

Select “What we do” for Public Affairs

Contacts for Additional Information

- **Regional Public Affairs Officer**

- **Victor Dricks**

- **Phone: (817) 860 – 8128**

- **State Liaison Officer**

- **William (Bill) Maier**

- **Phone: (817) 860 - 8267**